

STATE	PROJECT NO.	YEAR	SHEET NO.	TOTAL SHEETS
KANSAS	87 N-0307-01	2006	1	89

KDOT PROJ. NO. 87 N-0307-01
 F.A. NO. STP N030 (701)
 OVERLAY
 GRADING AND SURFACING
 STORM SEWER
 SIGNALIZATION
 PAVEMENT MARKING
 SEEDING

INDEX OF SHEETS

SHEET NO	DESCRIPTION
1	TITLE SHEET
2-3	TYPICAL SECTIONS
4-10	PLAN SHEETS
11-13	STORM SEWER PROFILES
14-15	INTERSECTION PLANS
16-22	PAVEMENT REPAIR PLANS
23-32	PAVING DETAILS
27	NOT USED
33-42	INLET & MANHOLE DETAILS
43	MISCELLANEOUS DETAILS
44	SUMMARY OF QUANTITIES
45-48	SOIL EROSION DETAILS
49-53	TRAFFIC SIGNAL PLAN & DETAILS
54-57	PAVEMENT MARKING & SIGNING PLANS
58	CONSTRUCTION SEQUENCING
59-71	TRAFFIC CONTROL PLANS
64 & 65	NOT USED
72-89	CROSS SECTIONS

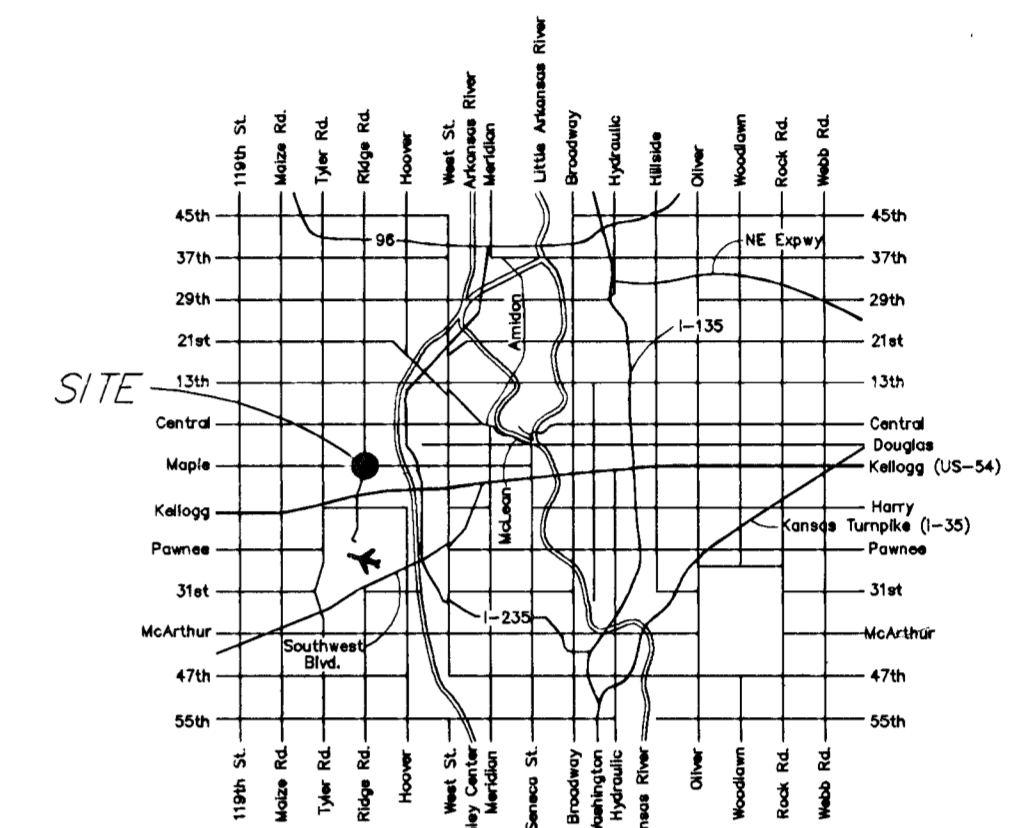
STATE OF KANSAS
 DEPARTMENT OF TRANSPORTATION



PLAN AND PROFILE OF PROPOSED
MAPLE & RIDGE INTERSECTION IMPROVEMENTS
 FEDERAL AID PROJECT

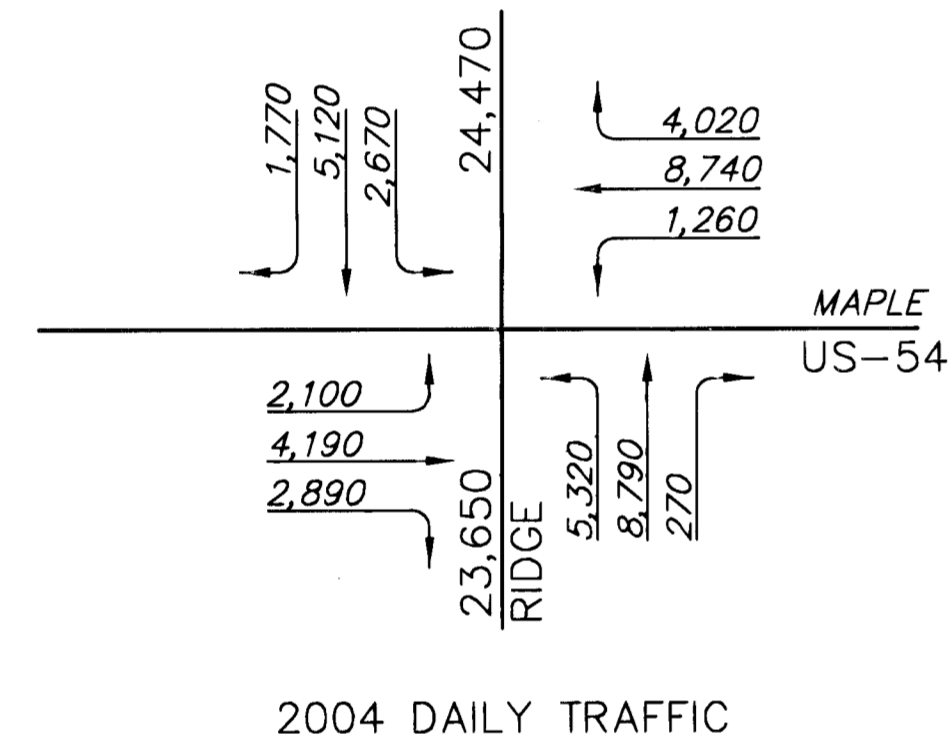
WICHITA, SEDGWICK COUNTY, KANSAS
 POPULATION = 335,562
 CITY OF WICHITA PROJECT NO. 472-84258
 CITY OF WICHITA O.C.A. NO. 706927

SCALE: 1"=200'



LOCATION MAP

BY	DATE
Surveyed	3-15-04
CAD Technician	4-12-04
Designers	4-12-04
Squad	

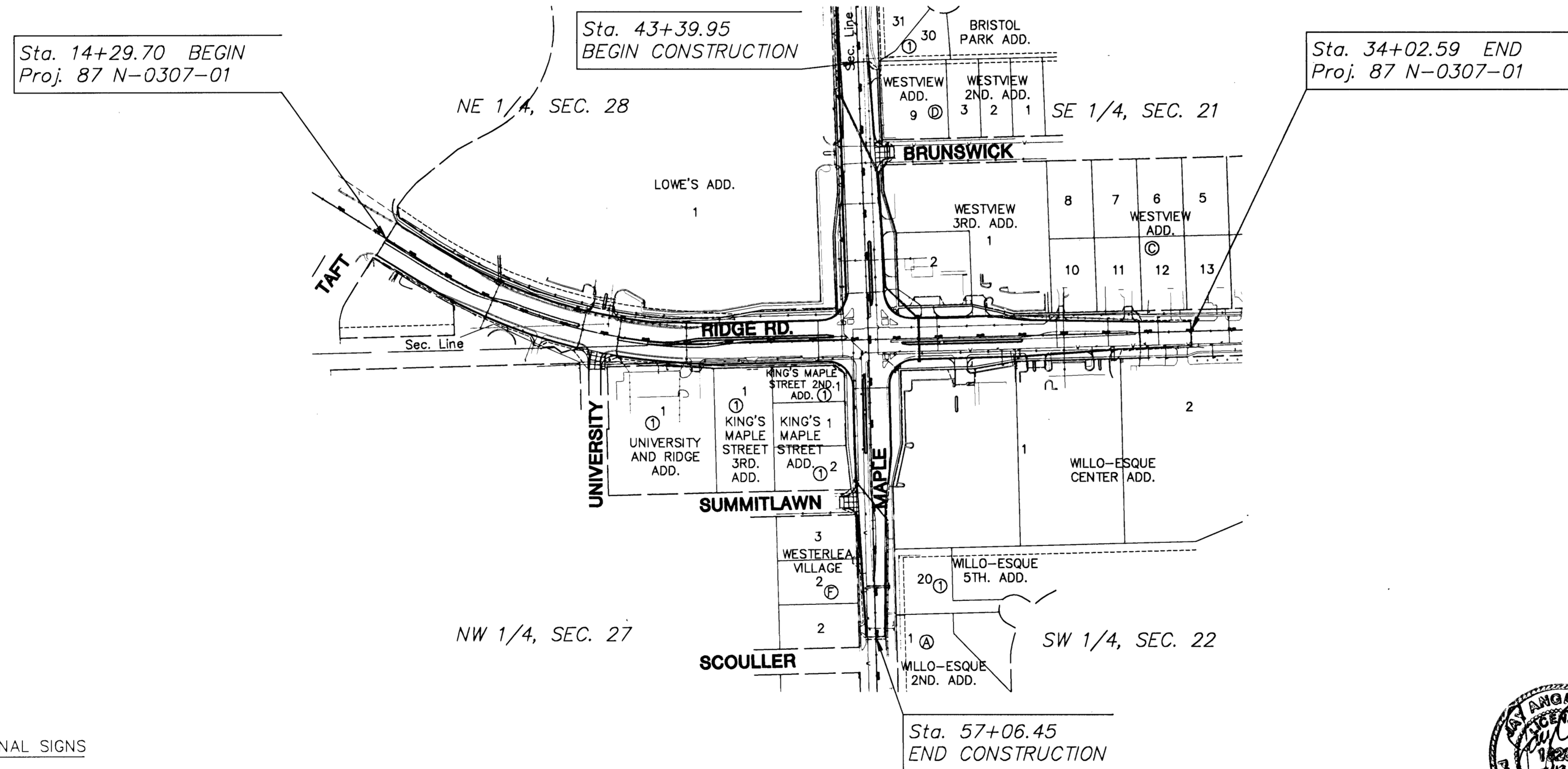


DESIGN DESIGNATION

AADT (2002)	=	24,470
AADT (2030)	=	29,364
DHV	=	10 %
D	=	60 %
T	=	3 %
V	=	40 M.P.H.
Control of Access	=	NONE
Clear Zone	=	6 FT.

CONVENTIONAL SIGNS

COUNTY LINE	-----	CENTER LINE OF PROJECT	50 1+00
CITY LIMITS	////	TERRACE	
STATE OR NATIONAL LINE	-----	CULVERTS	
TOWNSHIP, SECTION or GRANT LINE	-----	DROP INLET & STORM SEWER	
PROPERTY LINE	-----	ACCESS CONTROL	
HIGHWAY FENCE	-----	POWER POLE	
EXISTING FENCE	-----	TELEPHONE POLE	
GUARD FENCE	-----	MARSH	
CONSTRUCTION LIMITS	-----	HEDGE	
RIGHT OF WAY LINE	-----	TREES	
TRAVELED WAY	-----	PROFILE ELEVATION	
RAILROADS	-----	STREAM or CREEK	



GROSS LENGTH OF PROJECT	1,864.05 FT.
EXCEPTIONS	0.00 FT.
ADDITIONS	0.00 FT.
NET LENGTH OF PROJECT	1,864.05 FT.
NET LENGTH OF BRIDGES	0.00 FT.
NET LENGTH OF ROAD	1,864.05 FT.

NOTE:
 TWO WAY TRAFFIC TO BE CARRIED THROUGH CONSTRUCTION. LOCAL TRAFFIC WILL BE PERMITTED TO ADJACENT PROPERTIES.

PREPARED & SUBMITTED BY

MKEC ENGINEERING CONSULTANTS, INC.
 WICHITA, KANSAS



APPROVED - DATE

JIM ARMOUR, P.E.
 CITY ENGINEER
 PROJECT NO. 87 N-0307-01

RECOM. FOR APPROVAL-DATE

CHIEF, BUREAU OF TRAFFIC ENGINEERING
 KANSAS DEPARTMENT OF TRANSPORTATION

APPROVED - DATE

STATE TRANSPORTATION ENGINEER
 KANSAS DEPARTMENT OF TRANSPORTATION