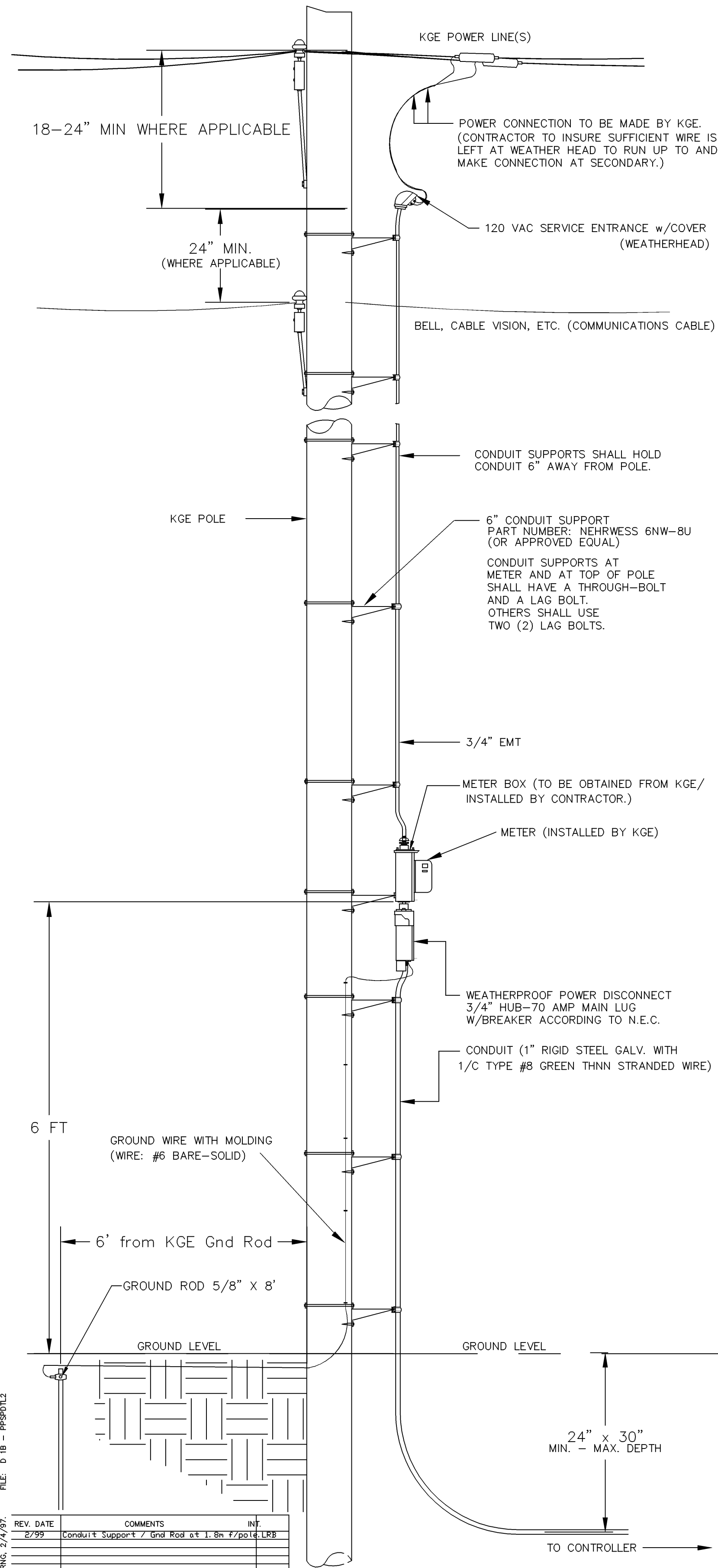
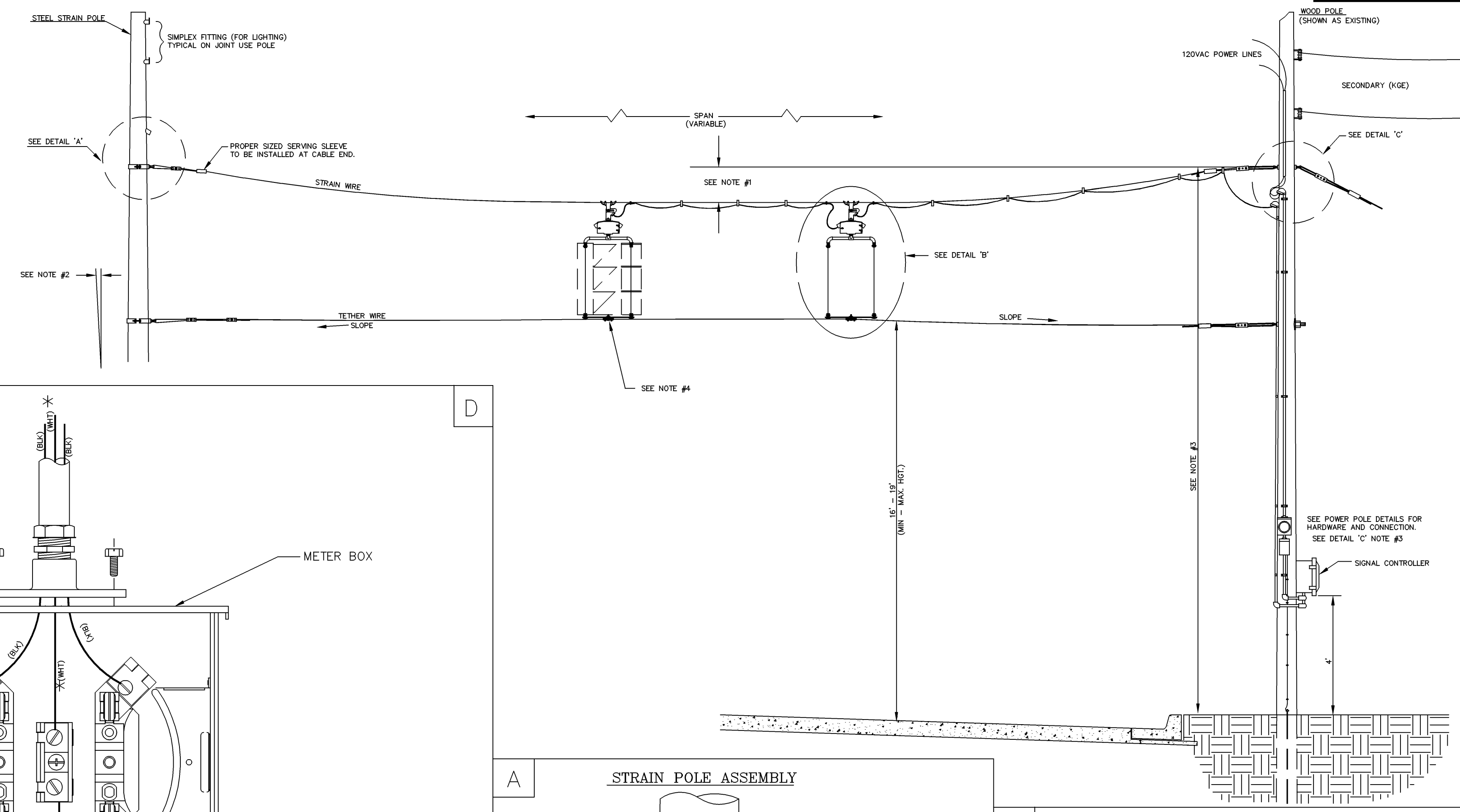


POWER POLE DETAILS

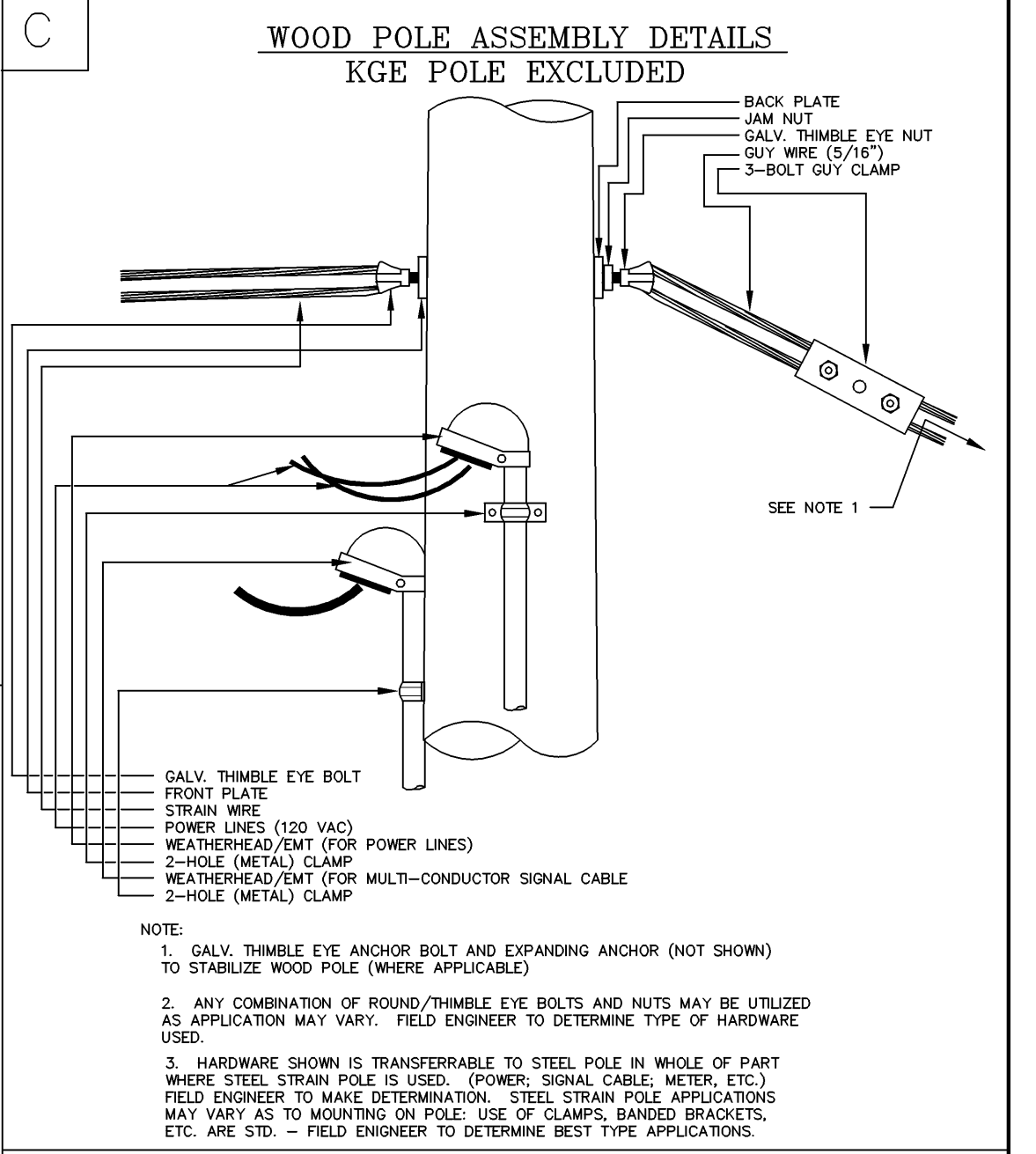
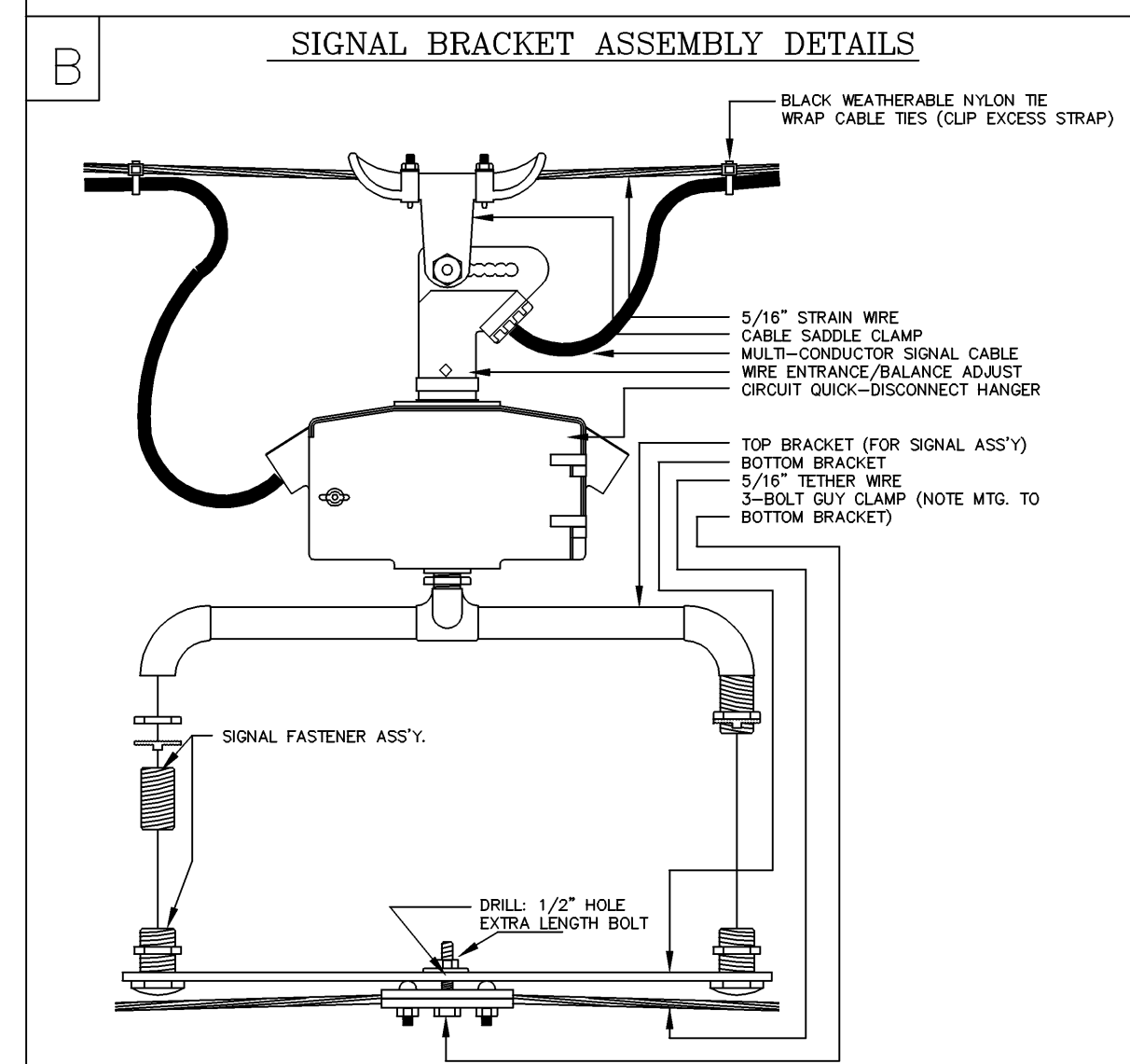
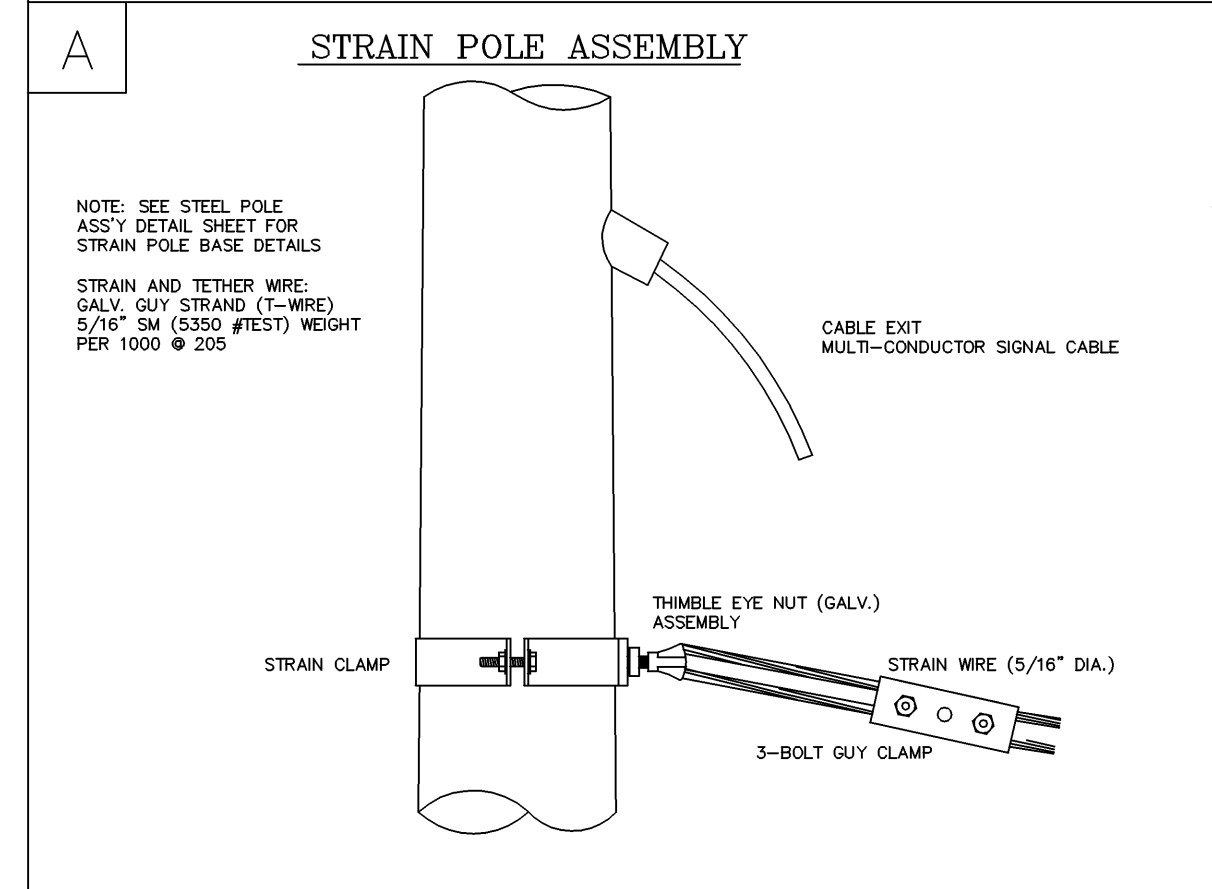
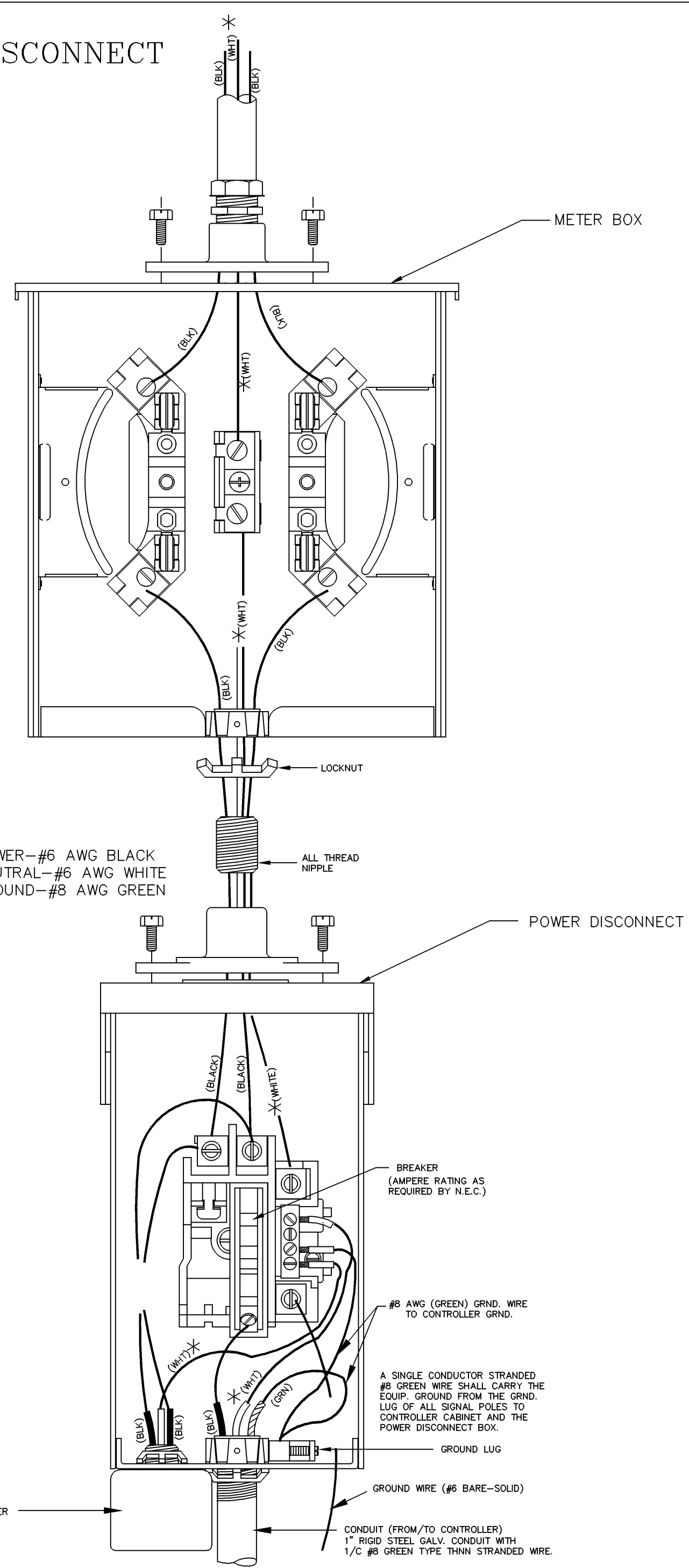


SPANWIRE ASSEMBLY DETAILS

1. MAX. SAG = 5% OF SPAN.
2. STANDARD BACKRAKE = 1.5'
3. HEIGHT OF STRAIN WIRE HOOK-UP TO BE DETERMINED BY FIELD ENGINEER. TRAFFIC SIGNAL CABLE TO BE SECURED TO STRAIN (SPAN) WIRE WEATHERABLE NYLON CABLE HANGERS (12" CTR.) DETAIL 'B'
4. TETHER CLAMP TO BE DESIGNED TO RELEASE UNDER 'HIGH WIND LOAD' TO PERMIT SIGNAL 'FREE SWING'.



METER BOX & POWER DISCONNECT DETAILS



PROJECT DESCRIPTION		
POWER POLE AND SPAN POLE ASSEMBLY DETAILS		
PROJECT NUMBER		
DRAWN BY: T.M.	APPROVED BY:	REVISED BY: L. B.
DATE: FEB. 96		DATE: 2/26/99
CITY OF WICHITA DEPARTMENT OF PUBLIC WORKS		
DIVISION OF TRAFFIC ENGINEERING		SCALE
RANDALL W. HOSKINS, P.E. TRAFFIC ENGINEER		NO SCALE D-7

G:\10459\104591.dwg Traffic\104591600.dwg Layout: Detail4 -- Plotted by rcolson on Tuesday August 17, 2004, 3:27pm -- Copyright 2004, George Butler Associates, Inc.

REV. DATE	COMMENTS	BY
2/99	Consult Support 7' Grnd Rod at 1.8m 7/2014 LRB	