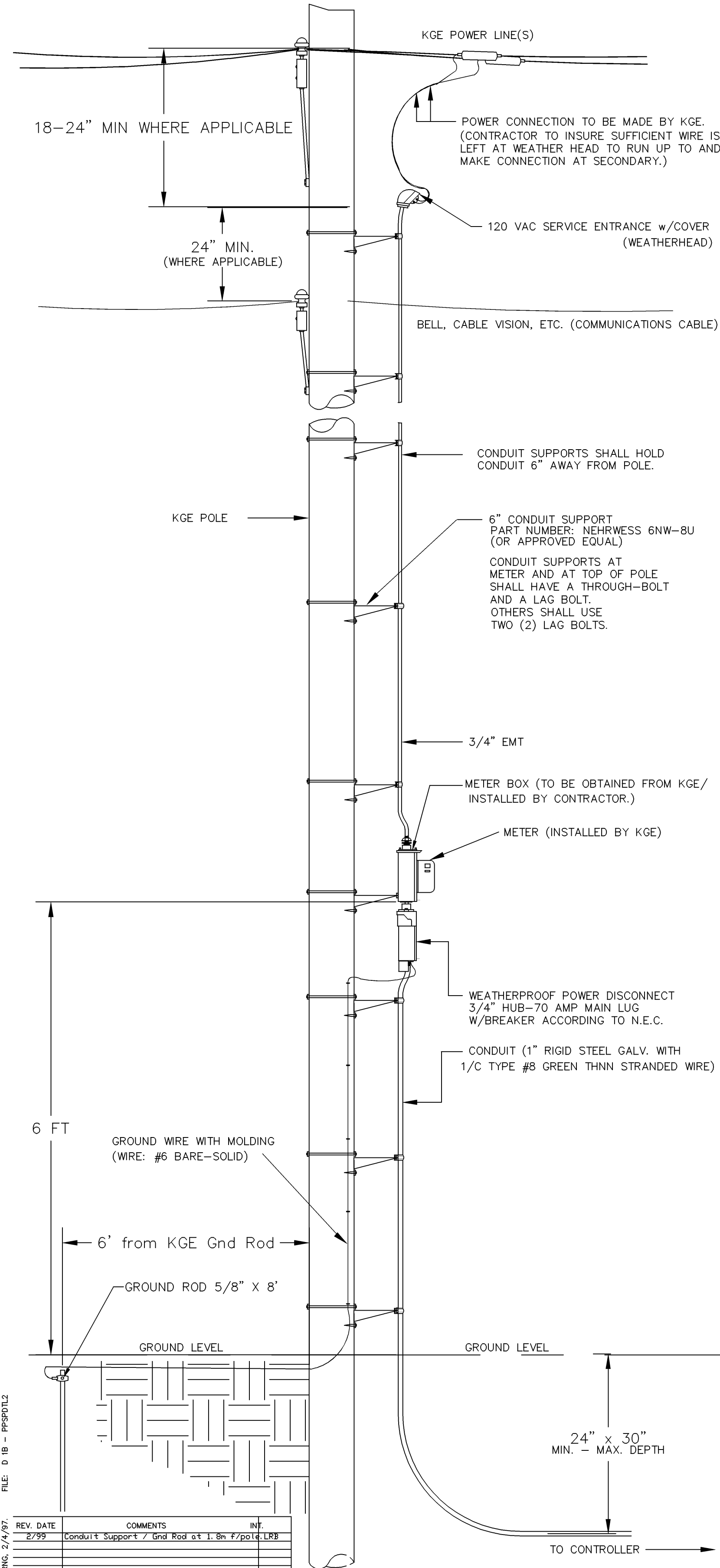
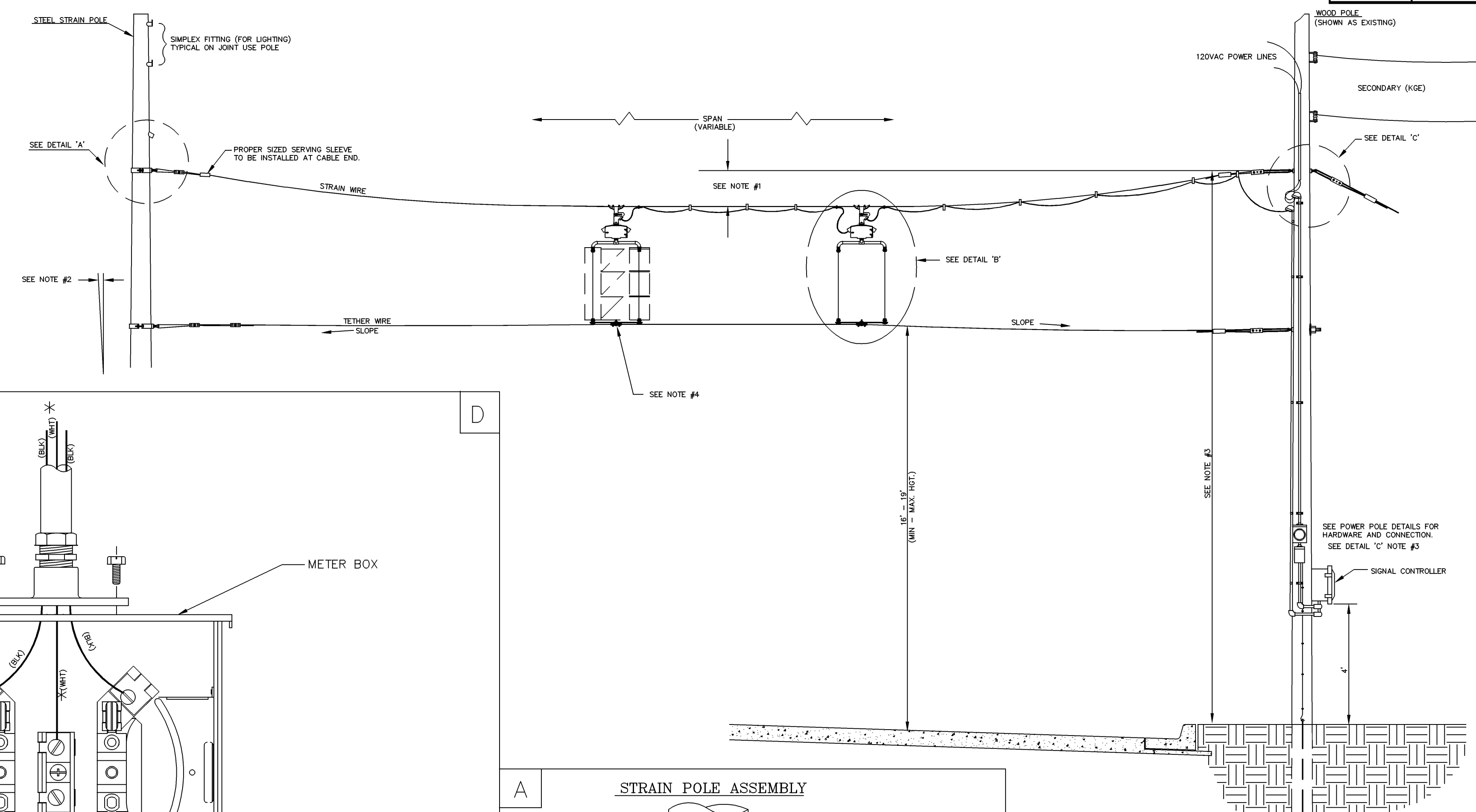


### POWER POLE DETAILS

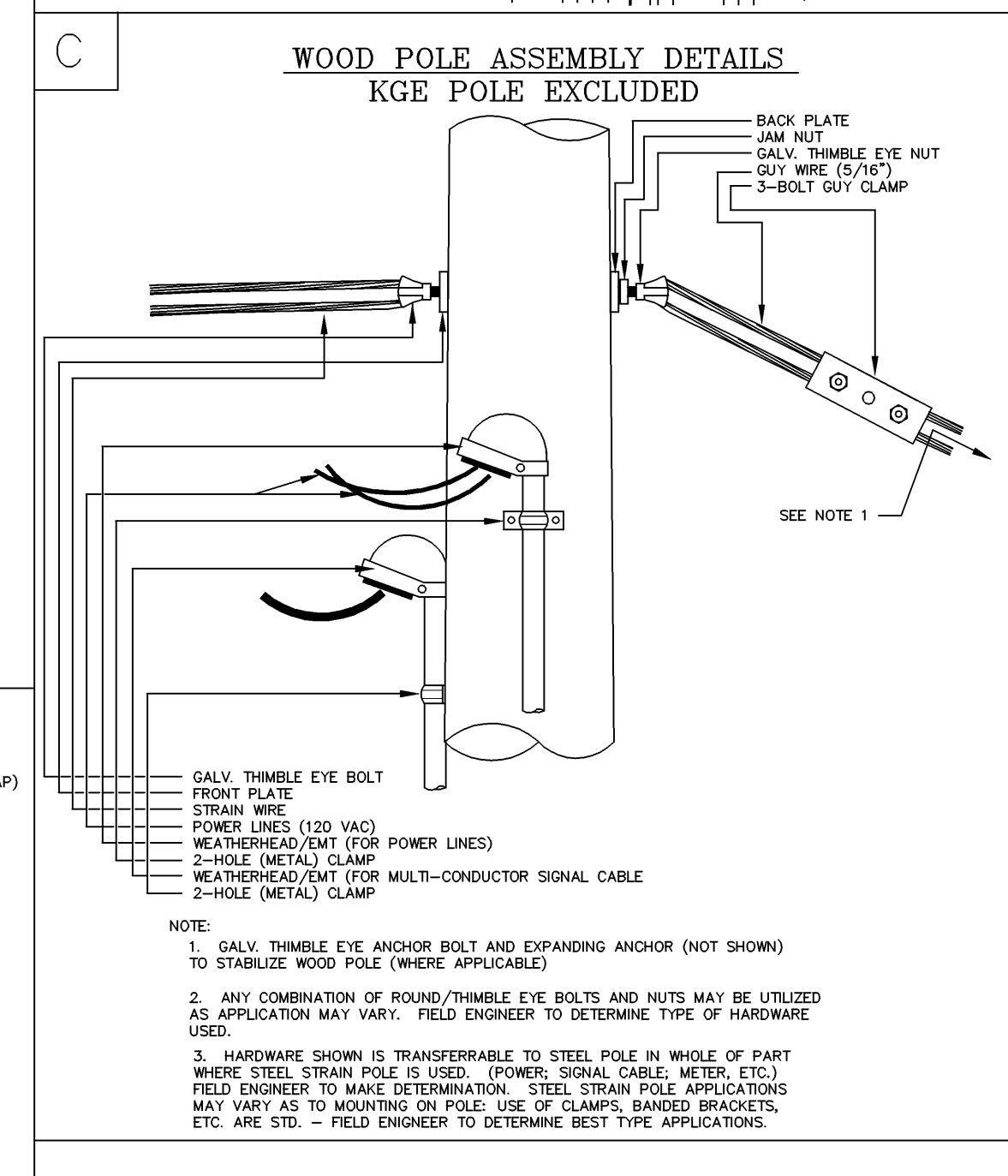
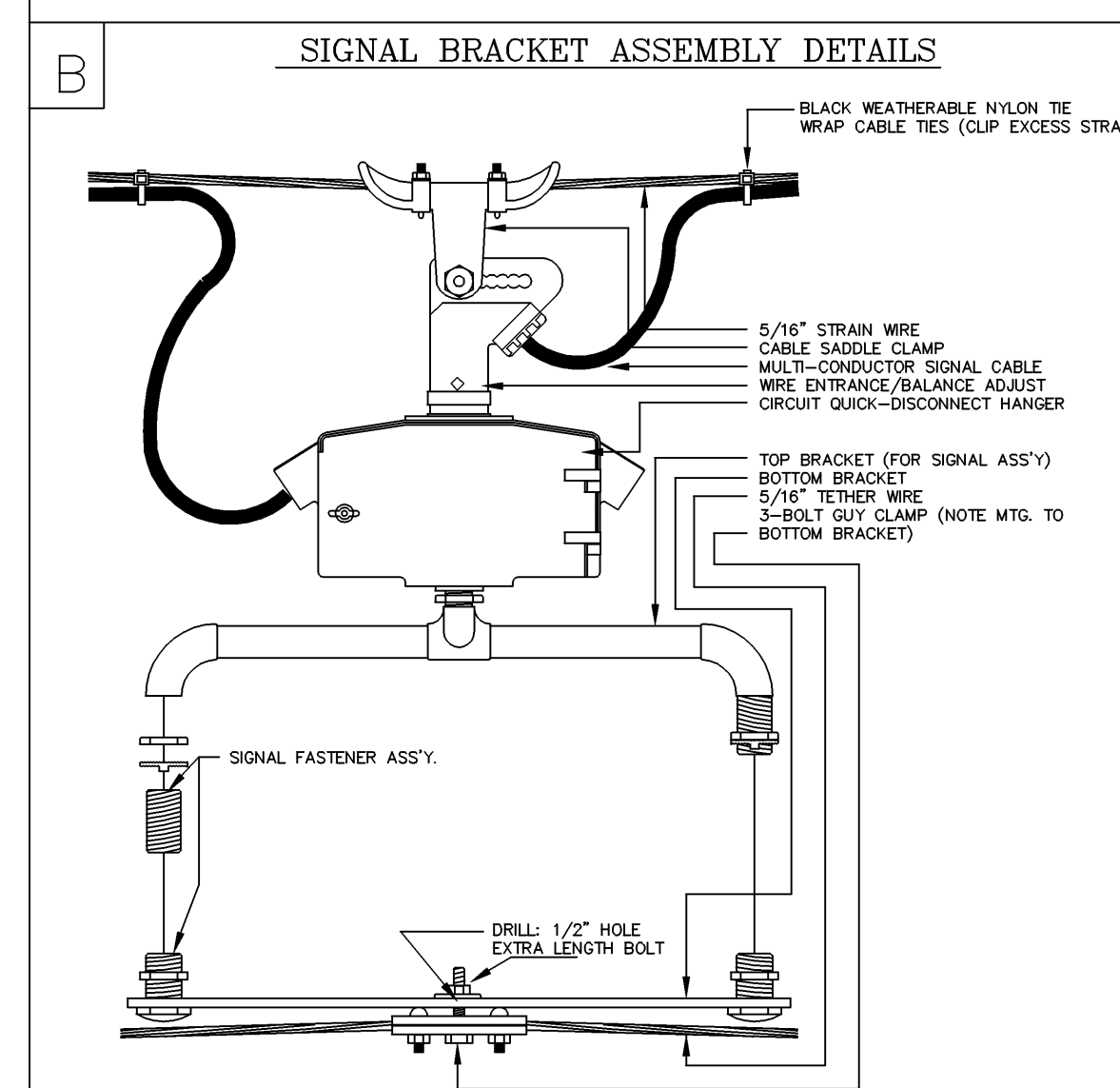
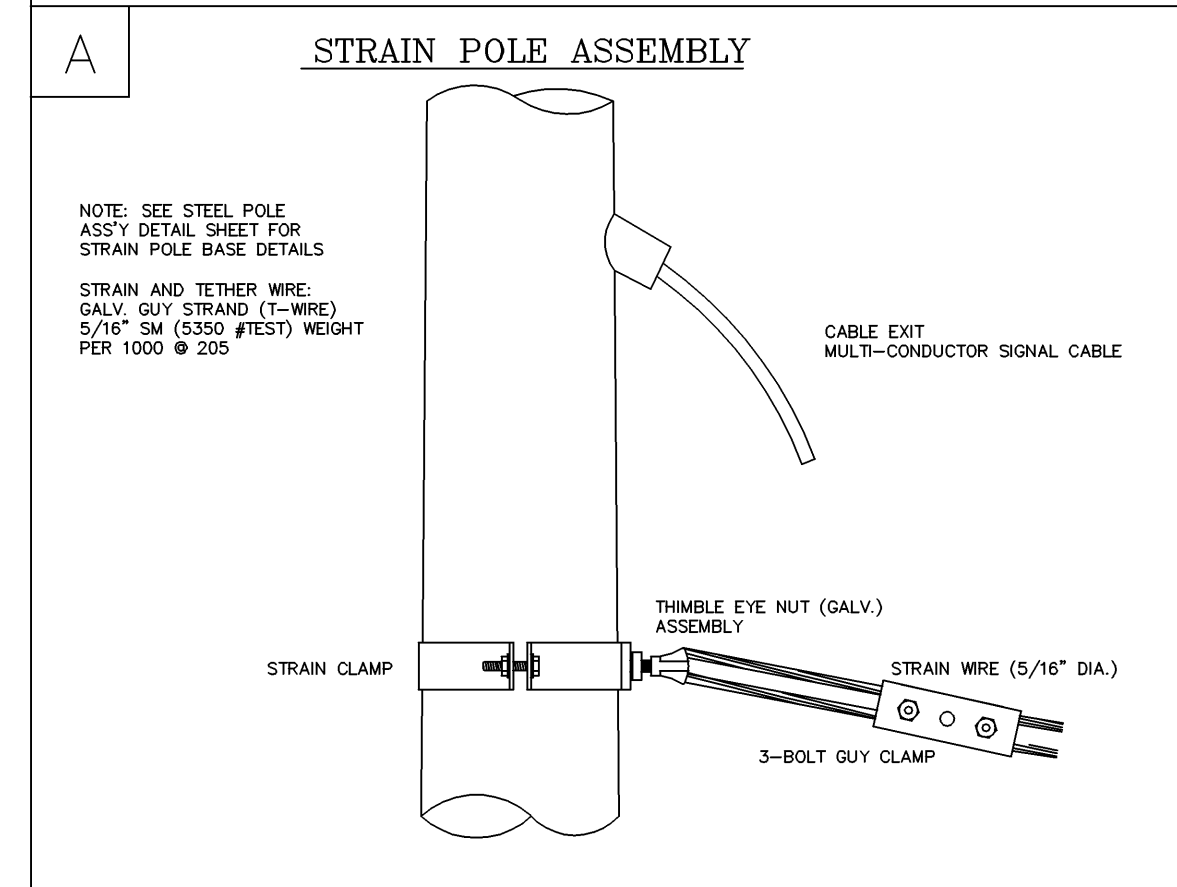
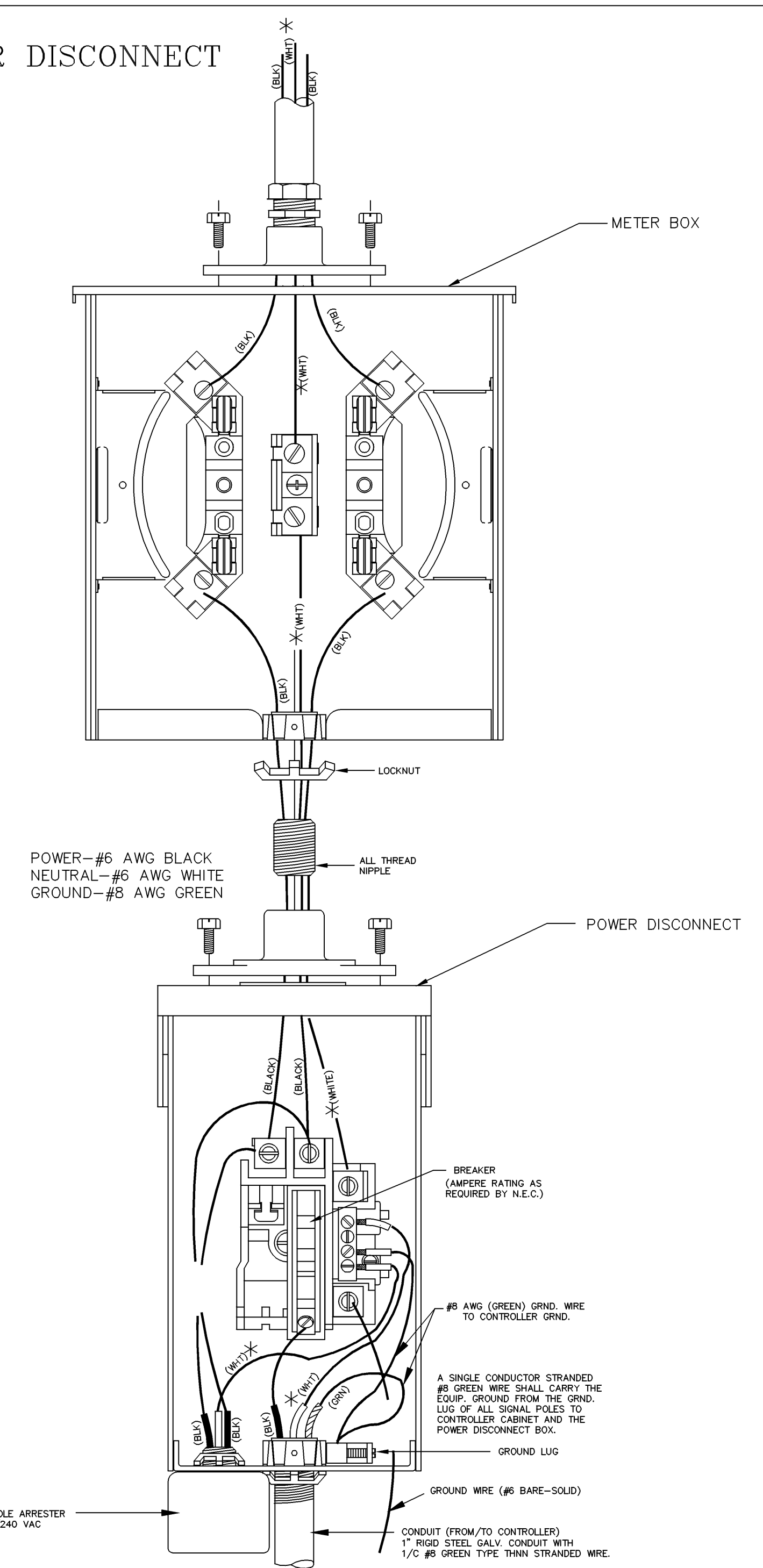


### SPANWIRE ASSEMBLY DETAILS

1. MAX. SAG = 5% OF SPAN.
2. STANDARD BACKRAKE = 1.5'
3. HEIGHT OF STRAIN WIRE HOOK-UP TO BE DETERMINED BY FIELD ENGINEER. TRAFFIC SIGNAL CABLE TO BE SECURED TO STRAIN (SPAN) WIRE WEATHERABLE NYLON CABLE HANGERS (12" CTR.) DETAIL 'B'
4. TETHER CLAMP TO BE DESIGNED TO RELEASE UNDER 'HIGH WIND LOAD' TO PERMIT SIGNAL 'FREE SWING'.



### METER BOX & POWER DISCONNECT DETAILS



PROJECT DESCRIPTION		
<b>POWER POLE AND SPAN POLE ASSEMBLY DETAILS</b>		
PROJECT NUMBER		
DRAWN BY: T.M.	APPROVED BY:	REVISED BY: L. B.
DATE: FEB. 96		DATE: 2/26/99
CITY OF WICHITA DEPARTMENT OF PUBLIC WORKS		
DIVISION OF TRAFFIC ENGINEERING		SCALE
RANDALL W. HOSKINS, P.E. TRAFFIC ENGINEER		NO SCALE D-7

G:\10460\10460Lddt\dwg\Traffic\10460T600.dwg Layout: Detail -- Plotted by rcolson on Tuesday August 17, 2004, 3:28pm -- Copyright 2004, George Butler Associates, Inc.

REV. DATE	COMMENTS	INT.
2/99	Conduit Support / Gnd Rod at 1.8m f/po14 LR8	