

SEEDING NOTES

1. ALL TRENCHES AND AREAS DISTURBED BY THE ELECTRICAL CONTRACTORS WORK ON SITE SHALL BE SEEDED AS FOLLOWS:

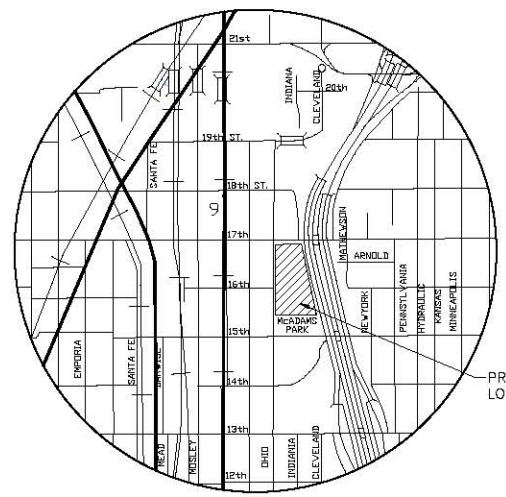
BUFFALO GRASS @ 2 LBS. PURE LIVE SEED/1,000 SF.

APPROXIMATELY 6,000SF OF DISTURBED AREA ON SITE.

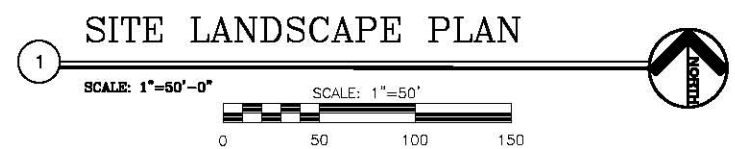
2. ALL DISTURBED AREAS SHALL BE COMPACTED AND RAKED SMOOTH TO A UNIFORM SURFACE PLANE. RAKE AND REMOVE RIDGES AND FILL DEPRESSIONS. THE SURFACE SHALL BE FREE FROM STICKS, SMALL STONES, AND OTHER EXTRANEIOUS MATERIALS.

SITE LEGEND

- (X) EXISTING LIGHT POLE TO REMAIN
- (X)(B) LIGHT POLE TO BE REMOVED
- (B) PROPOSED LIGHT POLE
- PROPOSED CONDUIT LINE



**LOCATION MAP
McADAMS PARK**



SITE LANDSCAPE PLAN

<p>MKEC ENGINEERING CONSULTANTS 411 N. WEBB ROAD WICHITA, KS. 67206 316 - 884 - 9800</p>	<p>CITY OF WICHITA PARK AREA LIGHTING</p>		
	<p>PROJECT NAME McADAMS PARK</p>		
	<p>SHEET TITLE TURF RESTORATION</p>		
	<p>MLP DESIGN BY: ?????</p>	<p>MLP DRAWN BY: 05619</p>	<p>JAG CHECKED BY: M21/ 5</p>
	<p>DATE</p>	<p>JOB NO.</p>	<p>SHEET/OF</p>