

NOTE: TRAFFIC WILL BE CARRIED THROUGH CONSTRUCTION.

# TRAFFIC SIGNAL IMPROVEMENTS AT ROCK ROAD & 37TH STREET NORTH

2004 SIGNALIZATION PROGRAM - PHASE II  
PROJ. NUMBER: 472-84066  
OCA NUMBER: 706911

## UTILITIES

Wichita Water & Sewer  
City Hall - 8th Floor  
455 N. Main  
Wichita, Kansas 67202  
Bill Perkins (316) 268-4555

Kansas Gas Service (formerly Westar Energy Gas)  
1021 E. 26th St. North  
Wichita, Kansas 67219  
Jim Stoltz, P.E. (316) 832-3122

Wichita Storm Water Utility  
City Hall - 455 N. Main  
Wichita, Kansas 67202  
Andy Busada (316) 268-4068

Westar Energy (formerly Westar Energy Electric)  
1900 E. Central - 3rd Floor  
Wichita, Kansas 67214  
Randy Truitt (316) 261-6512

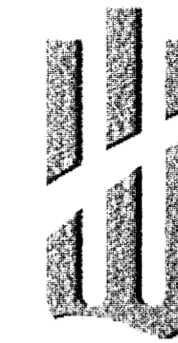
Southwestern Bell Telephone  
154 N. Broadway, Rm. 210  
Wichita, Kansas 67202  
Jim Toben (316) 268-2245

Multimedia Cablevision, Inc.  
701 E. Douglas  
3rd Floor - Engineering Dept.  
Wichita, Kansas 67209  
Mr. Behrooz-Dahem (316) 262-4270 Ext. 743

Telecommunications  
Wichita Public Schools  
Data Processing Center  
432 W. 3rd St.  
Wichita, Kansas 67203  
Kirk Schmitt (316) 833-4209

Aguila Net (formerly Peoples Natural Gas)  
1611 S. Hoover Rd.  
Wichita, Kansas 67209  
Calvin Briggs (316) 942-8811  
Emergency 800-527-0357

CITY OF WICHITA, KANSAS  
SEDGWICK COUNTY  
CITY POPULATION - 325,000



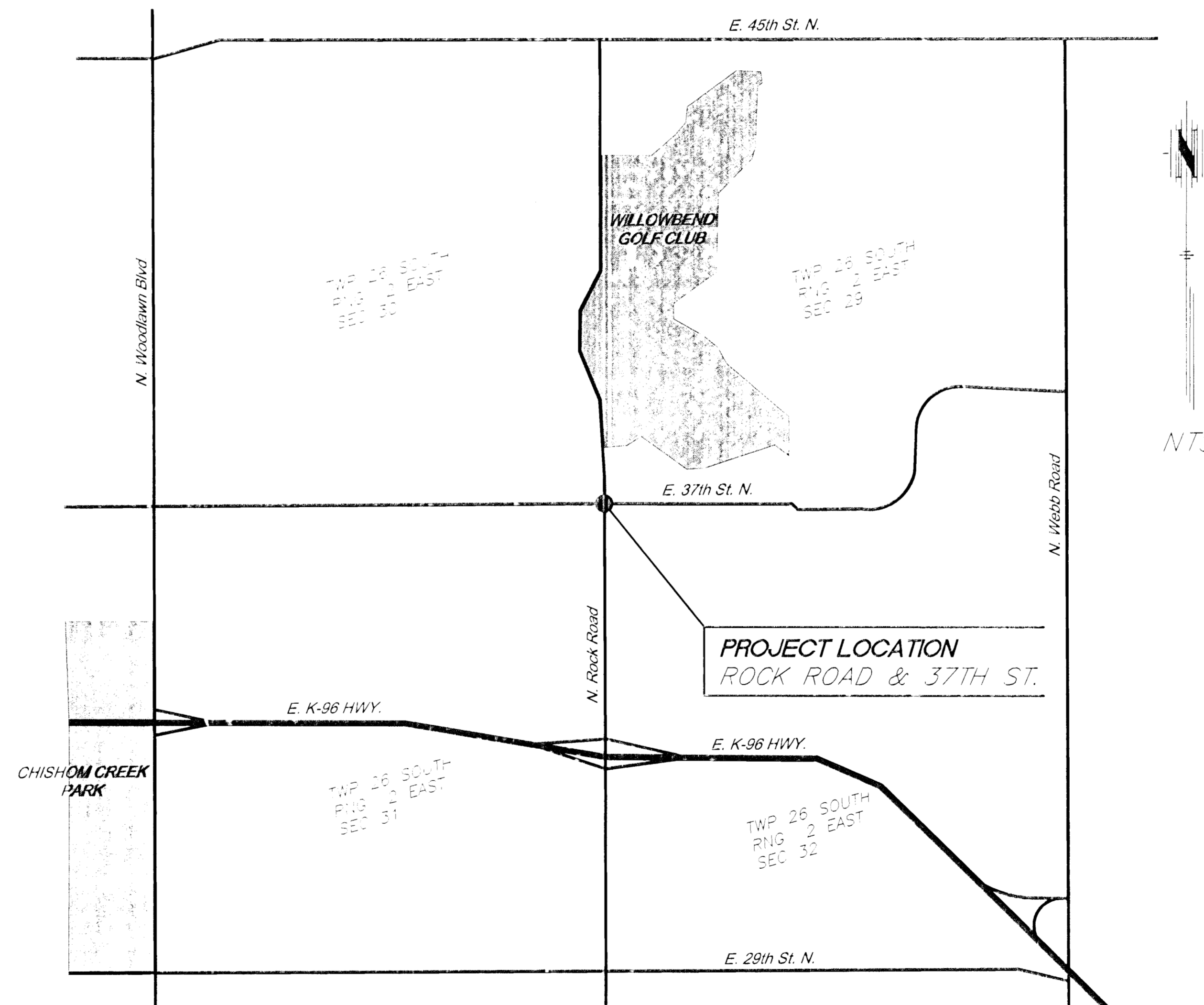
WICHITA

## INDEX OF SHEETS

Sh. No.	Description
1	Title Sheet
2	Traffic Signal Plan
3	Wiring Diagram
4	Bill of Materials
5-8	Traffic Signal Details

## GENERAL NOTES

- Existing underground (U.G.) overhead (O.H.) utilities and appurtenant structures have been plotted from available information and therefore, their locations must be considered approximate only. It is the responsibility of the Contractor to actively locate each utility prior to construction.
- All construction methods and materials shall conform to the City of Wichita, Kansas "Traffic Signal Specifications" and/or "Traffic Signal Detail" plan sheets.
- Minor relocations of junction service cables to avoid conflicts may be allowed with the approval of the City of Wichita, Kansas for late installation.
- All traffic signal indicators shall be LED, Light Emitting Diode Displays.
- All traffic signal equipment shall be "Black" in color per City Standard. All signal poles shall be galvanized prior to colored powder coating.
- Contractor shall coordinate traffic signal turn-on with the City of Wichita, Kansas.
- The Contractor may be required to close lanes during the placement of the traffic signal poles. Any lane closures should be coordinated with the Engineer. Lane closures will only be permitted during daylight and non-peak traffic hours. Parking area can be used at these times by the Contractor for storage. Peak hours are Monday thru Friday, 7:00 A.M. to 9:00 A.M. and 4:00 P.M. to 6:30 P.M.
- Where any curb, gutter, or combination curb and gutter needs to be removed for conduit trenching, signal pole construction, or any other purpose, replacement shall be Class A Concrete (AC) shaped to match the existing adjacent section.
- Where any existing sidewalk needs to be removed for conduit trenching, signal pole construction, or any other purpose, removal should include only complete squares or slabs. Whenever a part of a square or slab of existing concrete sidewalk, driveway or pavement is broken or damaged, the entire square or slab shall be removed and the concrete reconstructed. Replacement shall be Class A (AC) to the same thickness as that which was removed.
- Existing permanent pavement markings damaged or destroyed by the construction activity shall be replaced by the Contractor.
- Excess excavated material shall be disposed of at a site approved by the Engineer and provided by the Contractor.
- Pavement removal, rock excavation, removal of existing pole bases, dirt mix, bituminous mixture, aggregate base material, saw-cutting, and other items of work associated with the installation of the pole bases, conduit, service cables or the proposed traffic signal shall be considered incidental to the bid item "Traffic Signal Installation" and shall not be measured or paid separately.
- Westar Energy shall be notified by the Contractor prior to beginning work at each location to determine the proper type and method of hook up. This coordination shall include provision of the meters to be installed, installation of the new street lights on the signal poles, and the removal of the existing light poles after the new street lights are in operation.
- The Contractor shall contact Southwestern Bell Telephone (Jim Toben at 316-268-2759) a minimum of 48 hours prior to any excavation at intersections with underground telephone ducts.
- The Contractor shall fuse all overhead power on the riser pole. Underground power feed shall be fused by Westar Energy ahead of the connection point provided the Contractor.
- Luminaires, luminaire arms, and wiring for the proposed street lights shall be provided and installed by others. The Contractor shall leave a pull wire in all 2" PVC conduit.
- Prior to bidding, the Contractor shall contact Westar Energy (Jimmy Washington 316-261-6315) to become familiar with the requirements and fees imposed upon the contractor to gain access to Westar Energy service cables.
- Construction staking shall be done by the City of Wichita.



PLANS PREPARED AND SUBMITTED BY:

**GBA** GEORGE BUTLER ASSOCIATES, INC.  
Engineers - Architects

GEORGE BUTLER ASSOCIATES, INC.  
One Renner Ridge  
9801 Renner Boulevard  
Lenexa, Kansas 66219-9745  
Telephone (913) 492-0400

*Scott Canfield*  
SCOTT CANFIELD, P.E., PTOE  
Project Engineer

*BAusDA*  
DATE



PLANS APPROVED BY:

CITY OF WICHITA

JIM ARMOUR, P.E.  
City Engineer

DATE