



KS: 1-800-344-7233
WICHITA: 687-2470

SANITARY SEWER PRIVATE PROJECT PLANS FOR

QUIKTRIP STORE #316

US HIGHWAY 54 & 143RD STREET EAST WICHITA, SEDGWICK COUNTY, KANSAS

PRIVATE PROJ. NO.: 1916PPS (607861)
JAMES L. ARMOUR, P.E., CITY ENGINEER
SEPTEMBER 2008

GENERAL NOTES

ALL ELEVATIONS SHOWN ARE BASED ON CITY DATUM(+1187.4=NGVD 29).

1. CONTRACTOR WILL BE REQUIRED TO PROVIDE A MINIMUM ADVANCE NOTICE OF SEVENTY-TWO (72) HOURS (EXCLUDING WEEKENDS AND HOLIDAYS) TO UTILITY COMPANIES PRIOR TO STARTING ANY EXCAVATION AS FOLLOWS:

KANSAS ONE CALL 1-800-344-7233 OR
687-2470 (LOCAL WICHITA)

THE CONTRACTOR MUST NOTIFY THE FOLLOWING IN CASE OF AN EMERGENCY:

COX COMMUNICATIONS 316-262-0661
AT&T 1-800-870-8390
KANSAS GAS SERVICE 1-800-482-4950
WESTAR ENERGY 316-383-8600
CITY OF WICHITA WATER &
SEWER DEPARTMENT 316-268-4555

THE CONTRACTOR SHALL NOTIFY PIPELINE COMPANIES AT LEAST 24 HOURS IN ADVANCE OF ANY WORK BEING PERFORMED ACROSS AND/OR ADJACENT TO PIPELINES.

2. CONTRACTOR SHALL NOT CAUSE ANY INCONVENIENCE TO THE PUBLIC, ADJACENT PROPERTY OWNERS, PEDESTRIANS, ETC. DURING THE CONSTRUCTION OF THIS PROJECT. THE CONTRACTOR SHALL NOT DISRUPT ACCESS TO ADJACENT PROPERTIES AT ANY TIME DURING CONSTRUCTION.

3. THE CONTRACTOR SHALL CONTACT THE ENGINEER FOR CLARIFICATION IF A DISCREPANCY OR INCONSISTENCY IS IDENTIFIED ON THE PLANS AND/OR SPECIFICATIONS.

4. CONTRACTOR IS RESPONSIBLE FOR THE DESIGN AND IMPLEMENTATION OF ALL REQUIRED/NECESSARY SHEETING, SHORING, AND SPECIAL EXCAVATION MEASURES REQUIRED ON THE PROJECT TO MEET OSHA, FEDERAL, STATE AND LOCAL REGULATIONS.

5. COST OF EXCAVATION, HAULING AND DUMPING OF EXCESS EXCAVATION SHALL BE SUBSIDIARY TO OTHER ITEMS OF WORK.

6. THE CONTRACTOR SHALL NOTIFY THE INSPECTOR FOR THIS PROJECT 48 HOURS PRIOR TO BEGINNING CONSTRUCTION. THE CONTRACTOR SHALL NOT START WORK ON THE PROJECT UNTIL THE PROJECT INSPECTOR ASSIGNED TO THE PROJECT IS PRESENT ON SITE. ANY WORK DONE WITHOUT INSPECTION WILL BE REQUIRED TO BE UNCOVERED FOR INSPECTION.

7. THE CONTRACTOR SHALL BE RESPONSIBLE FOR PRESERVING PROPERTY IRONS. THE CONTRACTOR WILL BE REQUIRED TO REESTABLISH ANY PROPERTY IRONS WHICH ARE DAMAGED OR DESTROYED BY HIS CONSTRUCTION OPERATIONS SUCH IRONS SHALL BE REESTABLISHED BY A LICENSED LAND SURVEYOR IN ACCORDANCE WITH STATE LAWS.

8. THE CONTRACTOR SHALL RESTORE ALL DITCHES, SWALES, ROAD SHOULDERS, ENTRANCES AND BANK LINES TO THEIR ORIGINAL SLOPES AND GRADES EXCEPT AS SHOWN OTHERWISE.

9. THE CONTRACTOR MUST EXAMINE THE CONSTRUCTION SITE PRIOR TO BIDDING AND BE SATISFIED AS TO THE WORK SHOWN FOR COMPLETION. AFTER BIDS HAVE BEEN RECEIVED, THE CONTRACTOR SHALL NOT ASSERT THAT THERE WAS A MISUNDERSTANDING OF THE QUANTITIES OF WORK OR OF THE NATURE FOR THE WORK TO BE COMPLETED.

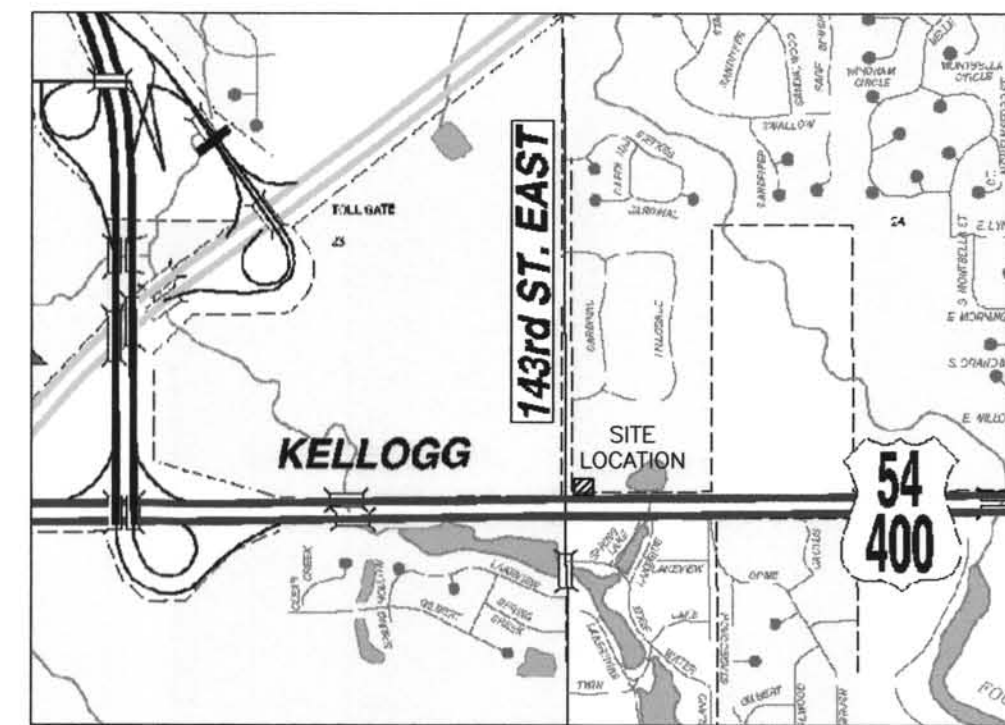
10. EXISTING UTILITIES AND THEIR LOCATION, AS SHOWN ON THE PLANS, REPRESENT THE BEST INFORMATION AVAILABLE FOR DESIGN. LOCATION INFORMATION HAS BEEN OBTAINED FROM THE VARIOUS UTILITY COMPANIES AND IS EITHER FROM COMPANY RECORD DRAWINGS OR COMPANY PROVIDED FIELD LOCATIONS. THE PLAN LOCATIONS ARE NOT GUARANTEED. ADDITIONAL EXISTING UTILITIES MAY ALSO BE ENCOUNTERED. THE CONTRACTOR WILL BE REQUIRED TO WORK AROUND EXISTING UTILITIES WHICH ARE ENCOUNTERED ON THIS PROJECT. THE CONTRACTOR SHALL EXERCISE EXTREME CAUTION DURING TRENCHING OPERATIONS TO AVOID DAMAGING THESE LINES. ANY LINES DAMAGED SHALL BE REPLACED OR REPAIRED IMMEDIATELY AS DIRECTED BY THE ENGINEER AT THE CONTRACTOR'S EXPENSE.

11. THE CONTRACTOR SHALL CONTAIN HIS OPERATIONS TO PERMIT TRAFFIC THROUGH AND ACROSS CONSTRUCTION AT EXISTING ROADWAYS AT ALL TIMES. THE CONTRACTOR SHALL ERECT WARNING SIGNS, FLASHING LIGHTS, AND BARRICADES IN COMPLIANCE WITH THE MANUAL ON UNIFORM TRAFFIC CONTROL DEVICES TO ENSURE SAFETY AS DIRECTED IN THE GENERAL CONDITIONS. THE CONTRACTOR SHALL LIMIT THE EXTENT OF TRENCH TO REMAIN OPEN OVERNIGHT AND WEEKENDS TO LESS THAN 50 FEET.

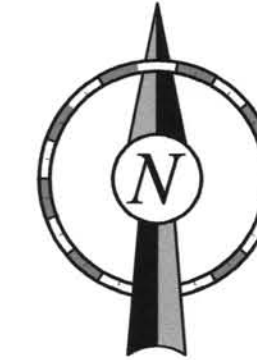
12. INTERURBAN TRAFFIC GENERATED OUTSIDE THE PROJECT AREA SHALL NOT BE CARRIED THROUGH CONSTRUCTION.

13. ALL LAWN/TURF AREAS DISTURBED BY CONSTRUCTION OF THE PROPOSED IMPROVEMENTS SHALL BE RESTORED WITH THE SAME GRASS/SOD AS EXISTING. RESTORATION OF DISTURBED AREAS SHALL INCLUDE, BUT NOT BE LIMITED TO, TOP SOIL PREPARATION, SEEDING, MULCH, AND/OR RESEEDING. ALL SEEDING/SODDING WORK SHALL BE IN ACCORDANCE WITH THE CITY OF WICHITA STANDARD SPECIFICATIONS AND THE CITY OF WICHITA ADMINISTRATIVE REGULATION NO. AR78 WHICH GOVERNS CLEANUP AND RESTORATION OR REPLACEMENT FOLLOWING CONSTRUCTION. ALL COSTS FOR THIS WORK SHALL BE SUBSIDIARY TO THE LUMP SUM PRICE BID FOR 'SITE RESTORATION'.

14. CUTS MADE TO PAVED SURFACES ON PUBLIC PROPERTY WILL BE REPAIRED BY THE CITY'S CONTRACTOR AND CHARGED AGAINST THE OWNER/APPLICANT. UNIT REPAIR PRICES ARE AVAILABLE FROM THE CITY AT 268-4418. A SURCHARGE MAY BE APPLICABLE: CALL 268-4418 FOR DETAILS. REPAIR COSTS TO BE PAID PRIOR TO RELEASE OF WATER SERVICE IF WATER SERVICE IS AFFECTED.



Vicinity Map
Not to Scale



PLAN INDEX:

- 1 COVER SHEET
- 2 SITE PLAN
- 3 SS PLAN/PROFILE
- 4 STD. MH DETAIL

Date Released: 03/16/2009
:apr 03/16/2009

As Built Plans:

CONTRACTOR: McCullough Excavation
INSPECTOR: Larry Gann, K E Miller Engineering
PDF by: NWS, 03-09-09

APPROVED AS NOTED
BY CITY ENGINEER OF WICHITA
SANITARY SEWERS *Julianne Kellman* 89-4-08
STORM SEWERS _____
DRIVEWAY APPROACHES _____
WATER MAINS _____
PAVING _____
NOTE TO CONTRACTOR
INSPECTION AND TESTING FOR THIS PROJECT IS TO BE PROVIDED BY A LICENSED CONSULTING ENGINEERING FIRM UNDER CONTRACT WITH THE OWNER/DEVELOPER. SAID INSPECTION TO BE IN ACCORDANCE WITH THE CITY OF WICHITA STANDARD CONSTRUCTION ENGINEERING PRACTICES AND CERTIFIED BY A LICENSED PROFESSIONAL ENGINEER. NO WORK SHALL BE PERFORMED IN DEDICATED EASEMENTS OR THE PUBLIC RIGHT-OF-WAY BY THE CONTRACTOR WITHOUT SUCH INSPECTION NOR SHALL ANY WORK BE COMMENCED IN DEDICATED EASEMENTS OR PUBLIC RIGHT-OF-WAY WITHOUT WRITTEN AUTHORIZATION BY THE CITY ENGINEER.

RESOURCE LIST:

PLANNING AND ZONING DALE MILLER 455 N. MAIN ST. 8TH FLOOR WICHITA, KANSAS 67202 (316)268-4421	FIRE DEPARTMENT LARRY GARCIA 455 N. MAIN ST. WICHITA, KANSAS 67202 (316)268-4551
PUBLIC WORKS - DIRECTOR CHRIS CARRIER, P.E. 455 N. MAIN ST. 8TH FLOOR WICHITA, KANSAS 67202 (316)268-4422	WESTAR ENERGY SHANE PRICE 201 N. MARSHAL WICHITA, KANSAS 67202 (316)261-6824
PUBLIC WORKS - ASSISTANT DIRECTOR JOSEPH T. PAJOR 455 N. MAIN ST. 8TH FLOOR WICHITA, KANSAS 67202 (316)268-4422	KANSAS GAS SERVICE ED KOEHLER 1021 E. 28TH ST. N. WICHITA, KANSAS 67219 (316)832-3177
KANSAS DEPARTMENT OF TRANSPORTATION DENNY TARVERDI 3200 E. 45TH ST. N. KECHI, KANSAS 67067 (316)744-1271	SBC JOHN SHORT 154 N. BROADWAY WICHITA, KANSAS 67202 (316)268-3122
WICHITA WATER AND SEWER DEPT. - DIRECTOR DAVID WARREN 455 N. MAIN ST. WICHITA, KANSAS 67202 (316)268-4555	

QUIKTRIP CONTACTS:

ENGINEER OF RECORD-JASON C. MOHLER, P.E. (316)634-6776
QT CIVIL ENGINEER-TODD LIPE, P.E. (918)615-7627
QT PROJECT MANAGER-JAKE SUTTON (918)615-7861
QT REAL ESTATE MANAGER-JOHN DIX (918)615-7829
4705 S. 129TH E. AVE.
TULSA, OK 74134

FLOOD CERTIFICATION:

THIS PROPERTY LIES IN ZONE "X" AND DOES NOT LOCATE WITHIN ANY PRESENTLY ESTABLISHED 100-YEAR FLOOD PLAIN, AS SHOWN BY THE FEDERAL EMERGENCY MANAGEMENT AGENCY, FLOOD INSURANCE RATE MAP FOR THE CITY OF WICHITA, COMMUNITY PANEL NUMBER 20173C0395 E
EFFECTIVE DATE FEBRUARY 02, 2007.



4705 South 129th East Ave.
Tulsa, OK 74134-7008
P.O. Box 3475
Tulsa, OK 74101-3475
(918) 615-7700

GENERAL NOTES

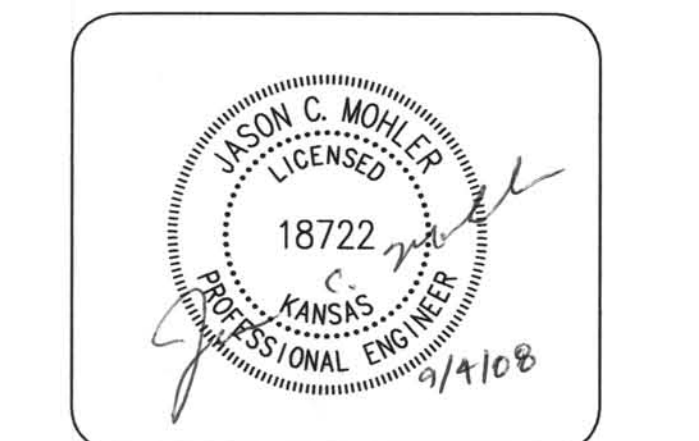
1. ALL SANITARY SEWER IMPROVEMENTS INCLUDING THE ABANDONMENT AND/OR REMOVAL OF A PORTION OF THE EXISTING SANITARY SEWER SYSTEM, AS DIRECTED BY THE QT CONSTRUCTION MANAGER, SHALL BE PERFORMED IN ACCORDANCE WITH THE CITY OF WICHITA STANDARDS & SPECIFICATIONS. (REF. "PART 800 - WATER & SEWER" OF THE CITY SPECS.)

COPYRIGHT
1986 QUIKTRIP CORPORATION
DESIGN PATENTS
QUIKTRIP PLANS ARE THE EXCLUSIVE PROPERTY OF QUIKTRIP CORPORATION, TULSA, OKLAHOMA. THESE PLANS ARE PROTECTED IN THEIR ENTIRETY BY DOMESTIC AND INTERNATIONAL COPYRIGHT AND PATENT STATUTES. ANY UNAUTHORIZED USE, REPRODUCTION, PUBLICATION, DISTRIBUTION OR SALE IN WHOLE OR IN PART, IS STRICTLY FORBIDDEN.

SITE BENCHMARK
"a" Chiseled on Traffic
Signal Light Pole
at NW corner of 143rd St & Kellogg Ave.
Elevation=1318.61
(NGVD 29)

No.	Revision	Date
-----	----------	------

Crafton Tull Sparks
8200 East 34th Street North, Bldg. 1600
Suite 1603, Wichita, KS 67226
316.634.6776 FAX: 316.634.6777
www.craftontullsparks.com
architecture | engineering



SS COVER SHEET

DRAWN BY: CKW	SHEET
DESIGNED BY: CKW	1
CHECKED BY: JCM	
ISSUE DATE: 9/04/08	OF 4

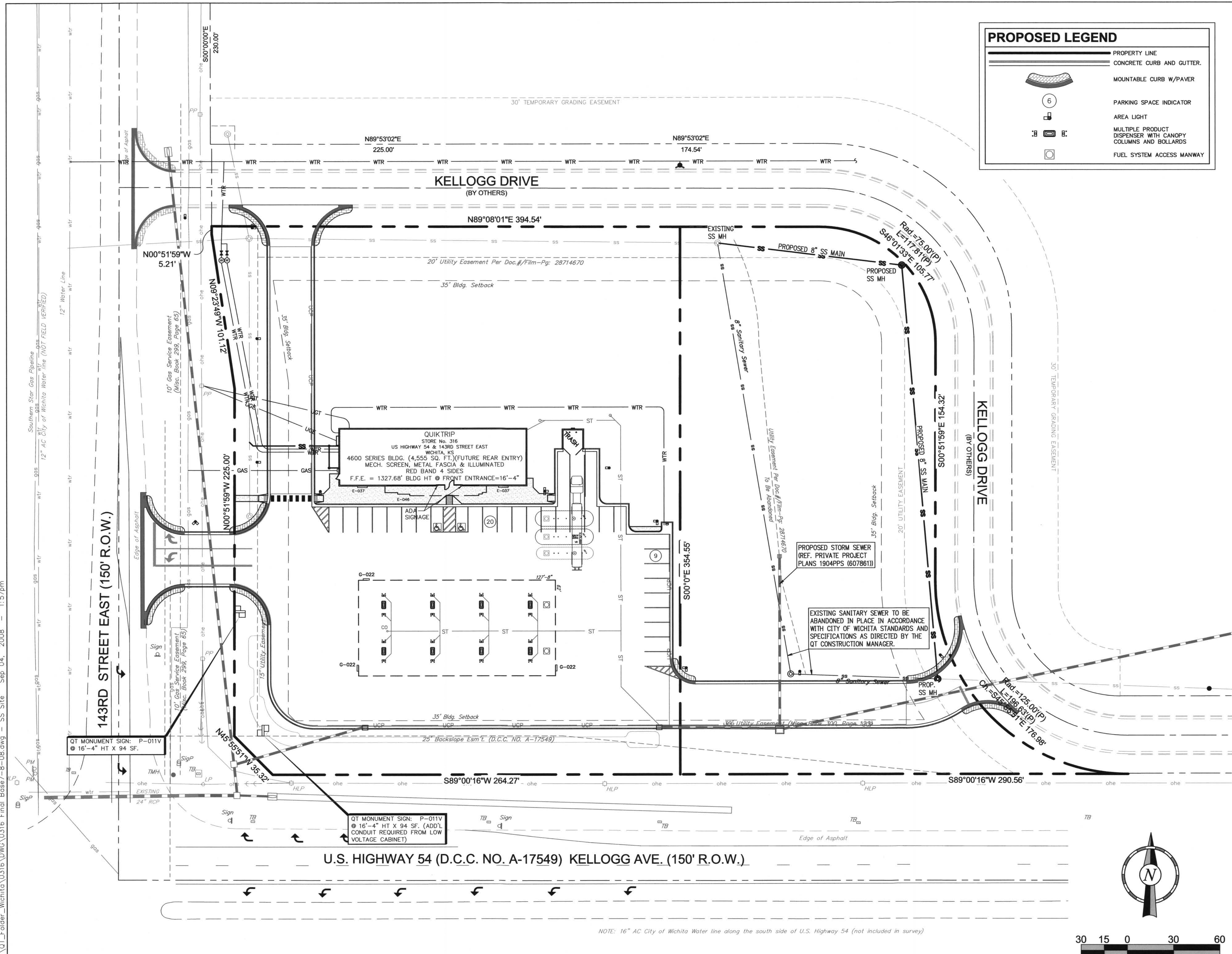
G:_OT_Folder_-_Wichita_0316\DWG\0316_Final_Base7-8-08.dwg - SS Cover - 1:40pm - 2008 - Sep 04 -

WICHITA, KANSAS

US HIGHWAY 54 & 143RD STREET EAST

QuikTrip Store No. : 316

G:\QT_Folder_Wichita\0316\DWG\0316 Final Base7-8-08.dwg - SS Site Sep. 04, 2008 1:57pm



PROPOSED LEGEND

- PROPERTY LINE
- CONCRETE CURB AND GUTTER.
- MOUNTABLE CURB W/PAVER
- PARKING SPACE INDICATOR
- AREA LIGHT
- MULTIPLE PRODUCT DISPENSER WITH CANOPY COLUMNS AND BOLLARDS
- FUEL SYSTEM ACCESS MANWAY

QuikTrip.
 4705 South 129th East Ave.
 Tulsa, OK 74134-7008
 P.O. Box 3475
 Tulsa, OK 74101-3475
 (918) 615-7700

GENERAL NOTES

LEGAL DESCRIPTION
 LOT 1, BLOCK B, PRAIRIE POND PLAZA
 2ND ADDITION, WICHITA, SEDGWICK
 COUNTY, KANSAS.

1. ALL SANITARY SEWER IMPROVEMENTS INCLUDING THE ABANDONMENT AND/OR REMOVAL OF A PORTION OF THE EXISTING SANITARY SEWER SYSTEM, AS DIRECTED BY THE QT CONSTRUCTION MANAGER, SHALL BE PERFORMED IN ACCORDANCE WITH THE CITY OF WICHITA STANDARDS & SPECIFICATIONS. (REF. "PART 800 - WATER & SEWER" OF THE CITY SPECS.)

© COPYRIGHT
 1986 QUIKTRIP CORPORATION
 DESIGN PATENTS
 QUIKTRIP PLANS ARE THE EXCLUSIVE PROPERTY OF QUIKTRIP CORPORATION, TULSA, OKLAHOMA. THESE PLANS ARE PROTECTED IN THEIR ENTIRETY BY DOMESTIC AND INTERNATIONAL COPYRIGHT AND PATENT STATUTES. ANY UNAUTHORIZED USE, REPRODUCTION, PUBLICATION, DISTRIBUTION OR SALE IN WHOLE OR IN PART, IS STRICTLY FORBIDDEN.

SITE BENCHMARK
 "a" Chiseled on Traffic
 Signal Light Pole
 at NW corner of 143rd St & Kellogg Ave.
 Elevation=1318.61
 (NGVD 29)

No.	Revision	Date

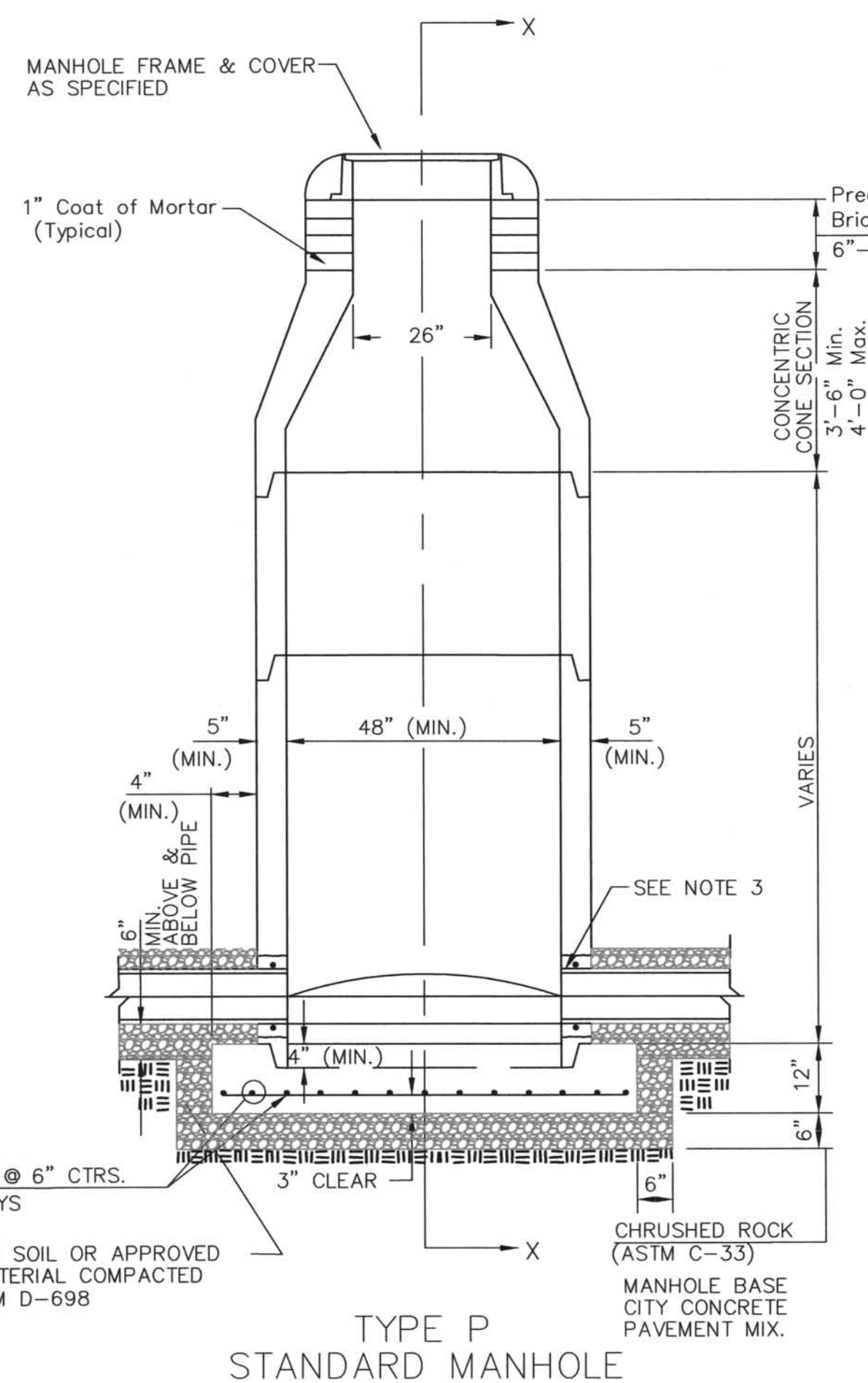
Crafton Tull Sparks
 8200 East 34th Street North, Bldg. 1600
 Suite 1603, Wichita, KS 67226
 316.634.6776 FAX: 316.634.6777
 www.craftontullsparks.com
 architecture | engineering

SS SITE PLAN

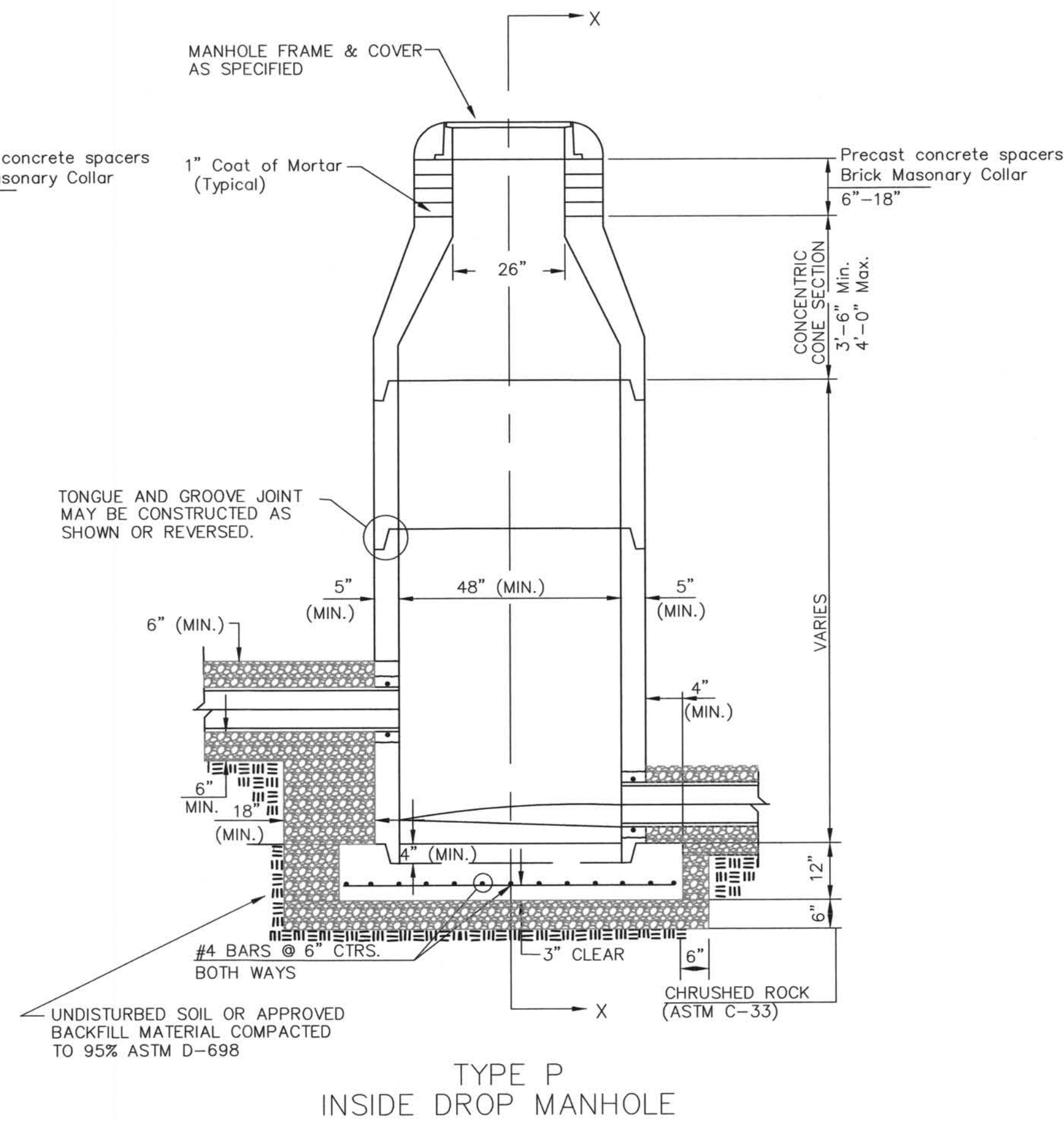
DRAWN BY: CKW	2
DESIGNED BY: CKW	
CHECKED BY: JCM	
ISSUE DATE: 9/04/08	

WICHITA, KANSAS
 US HIGHWAY 54 & 143RD STREET EAST
 QuikTrip Store No. : 316

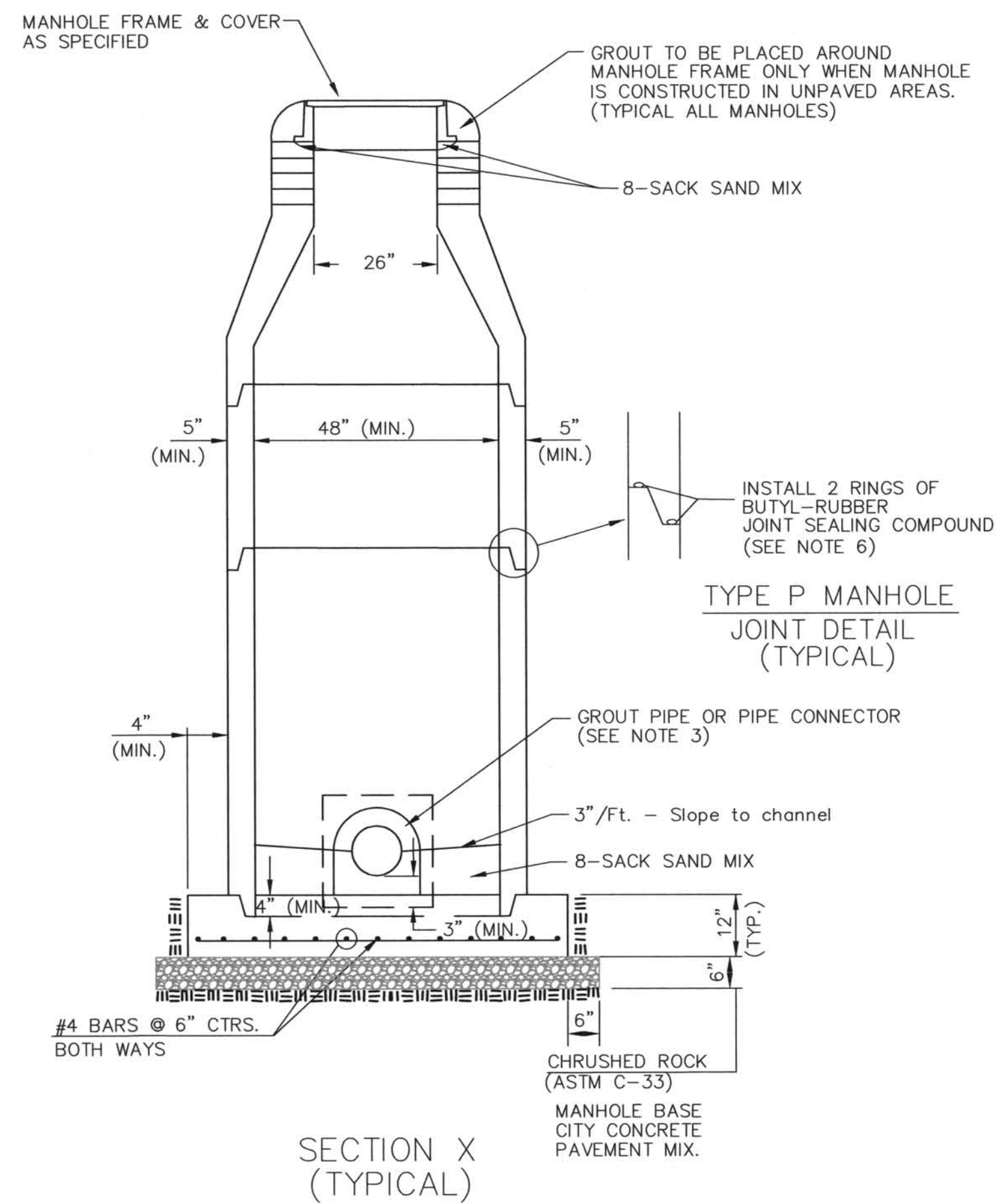
SEWER APPURTENANCES DETAILS



**TYPE P
STANDARD MANHOLE**



**TYPE P
INSIDE DROP MANHOLE**



**SECTION X
(TYPICAL)**

GENERAL NOTES

PRECAST MANHOLE NOTES

- ALL PRECAST CONCRETE MANHOLE SECTIONS SHALL CONFORM TO THE LATEST REVISIONS OF A.S.T.M. C478 AS MODIFIED BY THE SPECIFICATIONS.
- NON-SHRINK GROUT SHALL BE NON-METALLIC TYPE.
- APPROVED FLEXIBLE WATERSTOP GASKETS SHALL BE INSTALLED TO JOIN THE SEWER TO THE MANHOLE WALL WHEN P.V.C. PIPE IS USED. FOR OTHER TYPES OF PIPE THE SEWER SHALL BE GROUTED IN PLACE WITH NON-SHRINK GROUT. THE SEWER PIPE SHALL BE SUPPORTED WITH CONCRETE ENCASEMENT A MINIMUM OF 3 FEET FROM THE MANHOLE WALL AND TO THE FIRST JOINT FOR V.C.P. SUCH THAT THE JOINT REMAINS FLEXIBLE.
- ALL INSIDE SURFACES OF THE CONCRETE MANHOLE WHICH WOULD BE EXPOSED TO SEWER GAS SHALL BE COATED PER SECTION 804.4 OF STANDARD SPECIFICATIONS.
- EXTERIOR MANHOLE WALLS SHALL BE COATED PER SECTION 804.4 OF STANDARD SPECIFICATIONS.
- JOINT SEALING COMPOUND SHALL BE PER 804.4 OF STANDARD SPECIFICATIONS.
- PRECAST MANHOLES SHALL BE SET AT LEAST 4 INCHES INTO THE MANHOLE BASE.
- TOP OF MANHOLE FLOOR SLAB SHALL BE AT LEAST 3 INCHES BELOW THE FLOW LINE OF THE OUTLET PIPE TO INSURE SUFFICIENT MINIMUM THICKNESS OF SHAPED INVERT.
- LIFTING HOLES SHALL BE FILLED WITH NON-SHRINK GROUT AND THE INTERIOR SURFACE COATED AS SPECIFIED.
- MORTAR USED IN MASONRY CONSTRUCTION SHALL CONTAIN 8 SACKS OF CEMENT PER CUBIC YARD. CONCRETE USED IN MANHOLE BASES SHALL CONFORM TO THE REQUIREMENTS OF CONCRETE FOR CONCRETE PAVEMENT CONSTRUCTION AS SPECIFIED IN THE CITY STANDARD PAVING SPECIFICATIONS USING CITY CONCRETE PAVEMENT MIX WITHOUT AIR ENTRAINING ADMIXTURE. MORTAR SHALL BE PLACED AROUND THE MANHOLE RING AS SHOWN ON THE DRAWINGS WHEN MANHOLES ARE CONSTRUCTED IN UNPAVED AREAS. MANHOLES CONSTRUCTED WHERE PIPE SIZES ARE SMALLER THAN 24" SHALL HAVE AN INSIDE DIAMETER OF 4". MANHOLES CONSTRUCTED WHERE PIPE SIZES ARE 24" OR LARGER SHALL HAVE AN INSIDE DIAMETER OF 5". COMPLETED MANHOLE SHALL BE WITHOUT LEAKS AND WATER TIGHT.
- REINFORCING STEEL SHALL BE INSTALLED IN THE MANHOLE BASES AND SHALL CONSIST OF NO. 4 BARS PLACED ON 6" CENTERS IN BOTH DIRECTIONS. THE MANHOLE BASE REINFORCEMENT SHALL BE PLACED AT LEAST 3" ABOVE THE BOTTOM OF THE MANHOLE BASE. ALL COSTS FOR FURNISHING AND INSTALLING REINFORCING STEEL SHALL BE INCLUDED IN THE UNIT PRICE BID FOR THE MANHOLE.
- OPENINGS SHALL BE CUT INTO THE MANHOLE WALL WHEN OUTSIDE DROPS ARE CONSTRUCTED ON EXISTING MANHOLES. SUCH OPENINGS CUT INTO EXISTING MANHOLES SHALL BE AS SMALL AS PRACTICAL TO FACILITATE INSTALLING AND GROUTING THE NEW PIPE IN PLACE. WATERSTOP GASKETS SHALL BE USED WITH P.V.C. PIPE. THE NEW PIPE SHALL BE GROUTED INTO THE OPENING USING AN APPROVED NONSHRINK GROUT FOR THE FULL MANHOLE WALL THICKNESS. THE EXTERIOR OF THE COMPLETED CONNECTION SHALL BE SEALED WITH AN APPROVED BITUMINOUS COATING SUCH THAT THE CONNECTION WILL BE WATER TIGHT. FLOOR OF MANHOLE SHALL BE MODIFIED TO FORM NEW FLOW CHANNEL FOR THE NEW CONNECTION AS INDICATED BY THE DRAWING. THIS WORK, INCLUDING MODIFICATION OF MANHOLE FLOOR, SHALL BE PAID FOR AT THE UNIT PRICE BID FOR OUTSIDE DROP STACK CONSTRUCTED ON EXISTING MANHOLE.
- THE FLOORS OF ALL MANHOLES SHALL BE SHAPED WITH FLOW CHANNELS SUCH THAT THE MANHOLES WILL BE SELF CLEANING AND FREE OF AREAS WHERE SOLIDS COULD BE DEPOSITED AS SEWAGE FLOWS THROUGH THE MANHOLE FROM ALL INLET PIPES TO THE OUTLET PIPE. FLOW CHANNELS SHALL BE FORMED TO MATCH THE BOTTOM HALVES OF THE INFLOWING PIPES AND THE OUTFLOWING PIPE AS SHOWN BY THE DRAWINGS EXCEPT FOR INSIDE DROP MANHOLES. FLOW CHANNELS FOR INSIDE DROP MANHOLES SHALL BE CONSTRUCTED AS INDICATED BY THE DRAWING. MANHOLE FLOORS SHALL HAVE SLOPES OF 3 INCHES PER FOOT IN THE AREAS OUTSIDE OF THE FLOW CHANNELS SLOPED TOWARD THE FLOW CHANNELS. PIPES LAID THROUGH MANHOLES SHALL HAVE THE TOP HALF REMOVED TO NEAT LINES FOR THE FULL INSIDE DIAMETER OF THE MANHOLE. MANHOLE FLOORS SHALL THEN BE SHAPED AROUND THE BOTTOM HALF OF THE PIPE WHICH FORMS THE FLOW CHANNEL.
- MANHOLE COVER CASTINGS AND MANHOLE FRAME CASTINGS SHALL CONFORM TO THE REQUIREMENTS AS INDICATED IN THE STANDARD SPECIFICATIONS AND AS SHOWN IN THE STANDARD DETAIL DRAWING.
- THE VERTICAL DROP IN INSIDE DROP MANHOLES SHALL NOT EXCEED 2' REGARDLESS OF PIPE SIZE. THE CROWNS OF INFLOWING PIPES SHALL NEVER BE SET LOWER THAN THE CROWN OF THE OUTFLOWING PIPE.
- STANDARD MANHOLES AND STANDARD INSIDE DROP MANHOLES SHALL BE BID AS STANDARD MANHOLES FOR THE TYPE AND DIAMETER INDICATED. OUTSIDE DROP MANHOLES SHALL BE BID AS STANDARD OUTSIDE DROP MANHOLES FOR THE TYPE AND DIAMETER INDICATED. ALL MANHOLE DIAMETERS WILL BE 4' UNLESS INDICATED OTHERWISE.
- A BRICK MASONRY COLLAR SHALL BE INSTALLED BETWEEN THE CAST IRON FRAME AND THE CONCENTRIC CONE. THE COLLAR WILL HAVE 8" WALLS AND A VERTICAL HEIGHT OF 6" MINIMUM AND 18" MAXIMUM. A 1" COAT OF MORTAR WILL BE PLASTERED ON THE OUTSIDE OF THE COLLAR. THE USE OF PRE-CAST CONCRETE SPACERS FOR MANHOLE TOP ADJUSTMENT IS ALSO ALLOWED.
- WALL THICKNESS SHALL BE 1" GREATER THAN MANHOLE DIAMETER IN FEET.
- THE FULL DIAMETER OF THE MANHOLE SHALL EXTEND THE ENTIRE DEPTH OF THE MANHOLE TO THE CONE SECTION. NO REDUCTION IN MANHOLE DIAMETER WILL BE ALLOWED.



CRUSHED ROCK USED FOR ENCASEMENT AND BEDDING SHALL CONFORM TO ASTM C-33, GRADATION NO. 67, AND SHALL MEET ALL REQUIREMENTS FOR PORTLAND CEMENT CONCRETE PAVEMENT COARSE AGGREGATE, SECTION 406.2, CITY OF WICHITA STANDARD SPECIFICATIONS. ALL CRUSHED ROCK FOR BEDDING AND ENCASEMENT SHALL EXTEND TO THE LIMITS OF THE MANHOLE EXCAVATION.



GENERAL NOTES

1988 QUIKTRIP CORPORATION DESIGN PATENTS
QUIKTRIP PLANS ARE THE EXCLUSIVE PROPERTY OF QUIKTRIP CORPORATION, TULSA, OKLAHOMA. THESE PLANS ARE PROTECTED IN THEIR ENTIRETY BY DOMESTIC AND INTERNATIONAL COPYRIGHT AND PATENT STATUTES. ANY UNAUTHORIZED USE, REPRODUCTION, PUBLICATION, DISTRIBUTION OR SALE IN WHOLE OR IN PART, IS STRICTLY FORBIDDEN.

SITE BENCHMARK
"a" Chiseled on Traffic Signal Light Pole at NW corner of 143rd St & Kellogg Ave. Elevation=1318.61 (NGVD 29)

No.	Revision	Date

Crafton Tull Sparks
8200 East 34th Street North, Bldg. 1600
Suite 1603, Wichita, KS 67226
316.634.6776 FAX: 316.634.6777
www.craftontullsparks.com
architecture | engineering

SS DETAILS

DRAWN BY: C.O.W.	SHEET
DESIGNED BY: C.O.W.	4
CHECKED BY: JCM	
ISSUE DATE: 9/04/08	OF 4



STANDARD TYPE 'P' MANHOLES

CITY ENGINEER
JAMES L. ARMOUR, P.E., L.S.

PROJECT NUMBER	OCA NUMBER	DATE
		MM/YY

CITY ENGINEER'S OFFICE
CITY HALL - SEVENTH FLOOR
455 NORTH MAIN STREET
WICHITA, KANSAS 67202-1620
(316) 268-4501
(316) 268-4114 FAX

DESIGN	DRAWN
ABC	DEF
SHEET	
4 OF 4	

REV. 3/29/06, MCG

G:\QT_Folder_Wichita\0316 DWG\0316 Final Base7-8-08.dwg - SS DETAILS Sep 04, 2008 11:06am

WICHITA, KANSAS

US HIGHWAY 54 & 143RD STREET EAST

QuikTrip Store No. : 316