

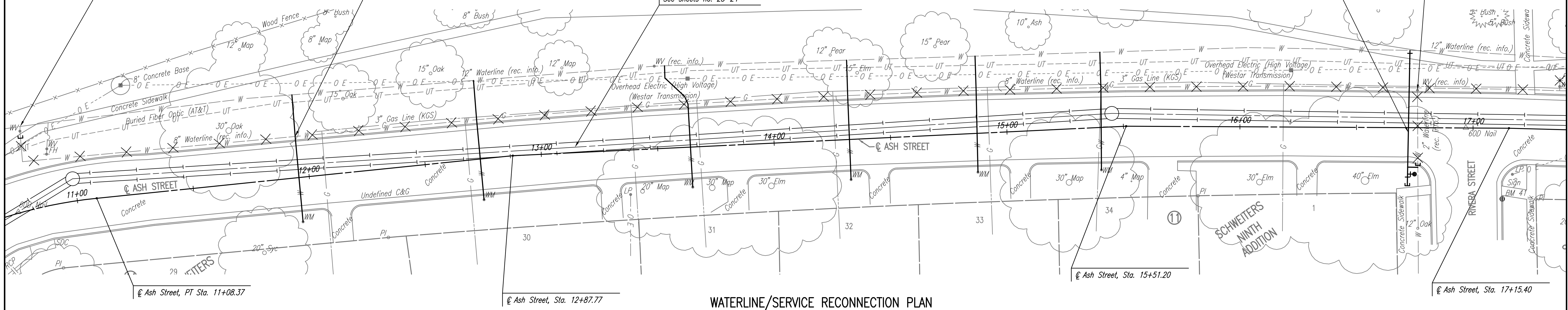
N: 1,678,372.3267, E: 1,656,277.0471
Existing Water Valve
Close and Plug Existing Valve.
Remove Valve Box (Salvage to City)
Plug and Abandon Existing 8" Pipe (E&N)

Service Reconnection (typical)
10 Locations this sheet
See sheet no. 44 for service
schedule and details.

SANITARY SEWER LINE NO. 1
See sheets no. 23-24

WATERLINE NO. 1
See sheet no. 47

N: 1,678,971.8211, E: 1,656,259.5334
Existing Water Valve
Close and Plug Existing Valve.
Remove Valve Box (Salvage to City)
Plug and Abandon Existing 2" Pipe (E)
and 8" Pipe (N&S)



WATERLINE/SERVICE RECONNECTION PLAN

N: 1,679,032.9296, E: 1,656,255.2907
Existing Fire Hydrant and Valve. Close and
Plug Valve, Remove Fire Hydrant and Valve
Box (Salvage to City)

SANITARY SEWER LINE NO. 1
See sheets no. 24-26

WATERLINE NO. 2
See sheet no. 47

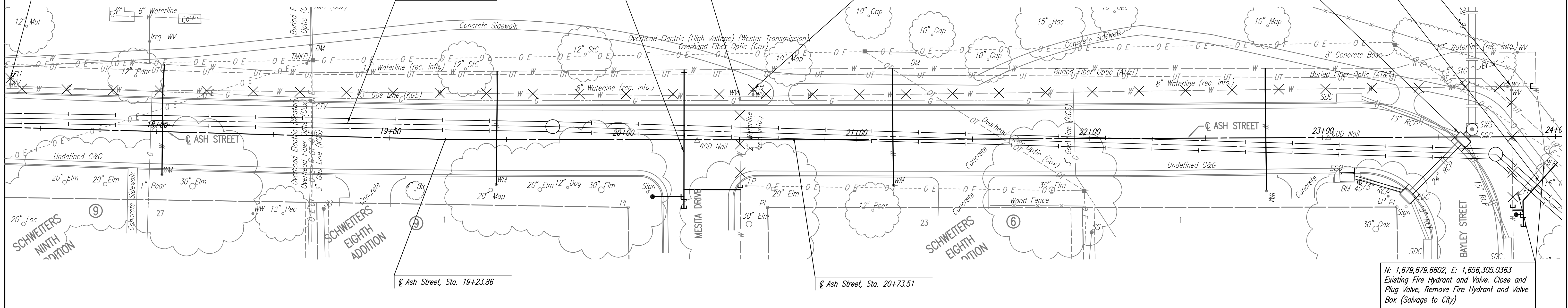
N: 1,679,345.7624, E: 1,656,263.9348
Existing Water Valve
Close and Plug Existing Valve
Remove Valve Box (Salvage to City)
Plug and Abandon Existing 2" Pipe (E)
and 8" Pipe (N&S)

N: 1,679,351.4767, E: 1,656,260.5900
Existing Fire Hydrant and Valve. Close and
Plug Valve, Remove Fire Hydrant and Valve
Box (Salvage to City)

Proposed SWS
See sheet no. 25

WATERLINE NO. 3
See sheet no. 48

N: 1,679,676.7211, E: 1,656,258.7869
Existing Water Valves (E&S)
Close and Plug Existing Valves.
Remove Valve Boxes (Salvage to City)
Plug and Abandon Existing 2" Pipe (E)
and 8" Pipe (N&S)



SEE SHEETS NO. 51-55 FOR PAVEMENT REMOVAL AND
REPLACEMENT LIMITS, ESTIMATED QUANTITIES, AND DETAILS.

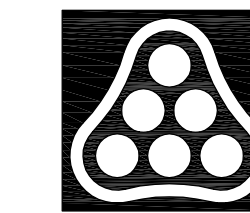
SCALE: 1" = 20'



X = Denotes Pipe to be removed/abandoned in place.
C = Denotes Cap/Plug by the contractor
(Includes removal of existing pavement.)

WATERLINE/SERVICE RECONNECTION PLAN

Served: 03-02-2010 4:20:28 PM by CSL
 Plot Scale: 1/20 03-02-2010 4:21:01 PM by CSL
 03/2007/07600/001/Phase 2/07600-001-W/Plan01



No.	Revision	By	Date
RELOCATION OF SANITARY SEWER NO. 23 PHASE 2: KELLOGG/GROVE TO PANNÉE/1-135 WATERLINE/SERVICE RECONNECTION PLAN JAMES L. ARMOUR, P.E. - CITY ENGINEER CITY OF WICHITA PROJECT NO. 468-84375 Professional Engineering Consultants, P.A. 303 S. TOPEKA • WICHITA, KANSAS 67202 316-262-2691 • FAX 316-262-3003			
Designed by	MDK, EJB	Job No.	35-07600-001
Drawn by	CSL, JAN	Date	AUGUST 2008
			Sht. 46 of 75