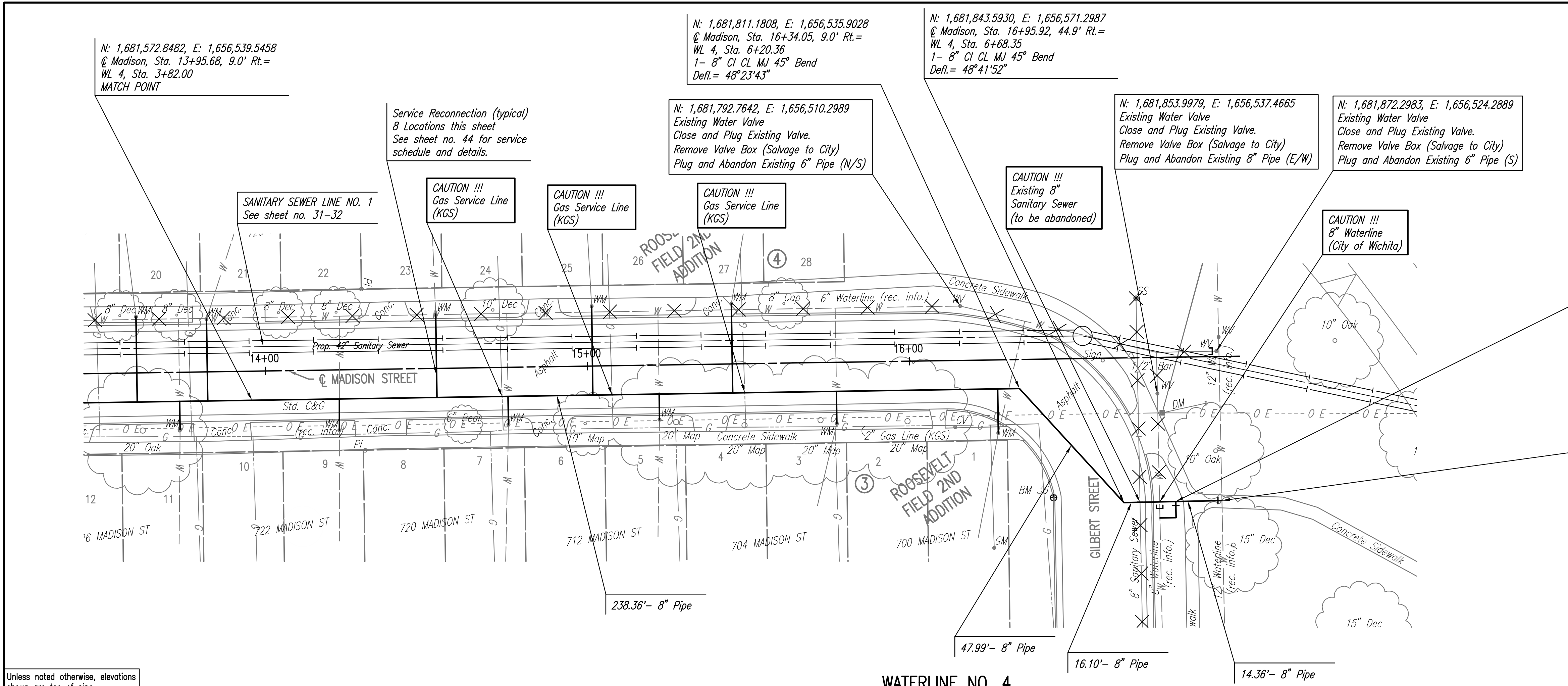


PLAN	CHECKED	DATE
	CHECKED	

PROFILE	CHECKED	DATE
	CHECKED	

Drawn: 03-10-2010 4:26:52 PM by CSJ
 Plot Scale: 1/20 03-10-2010 4:26:24 PM by CSJ
 03-10-2010 07:00:00 Phase 2: WPP04



SCALE:
 PLAN: LAT. & LONG. 0 20 40
 PROFILE: HORIZ. SAME AS ABOVE
 VERT. _____

CAUTION !!!
 Existing 8" Sanitary Sewer (to be abandoned)

CAUTION !!!
 8" Waterline (City of Wichita)

CAUTION !!!
 Gas Service Line (KGS)

CAUTION !!!
 Gas Service Line (KGS)

CAUTION !!!
 Gas Service Line (KGS)

CAUTION !!!
 Gas Service Line (KGS)

CAUTION !!!
 Existing Water Valve
 Close and Plug Existing Valve.
 Remove Valve Box (Salvage to City)
 Plug and Abandon Existing 6" Pipe (N/S)

CAUTION !!!
 Existing Water Valve
 Close and Plug Existing Valve.
 Remove Valve Box (Salvage to City)
 Plug and Abandon Existing 8" Pipe (E/W)

CAUTION !!!
 Existing Water Valve
 Close and Plug Existing Valve.
 Remove Valve Box (Salvage to City)
 Plug and Abandon Existing 6" Pipe (S)

CAUTION !!!
 Existing Water Valve
 Close and Plug Existing Valve.
 Remove Valve Box (Salvage to City)
 Plug and Abandon Existing 6" Pipe (W)

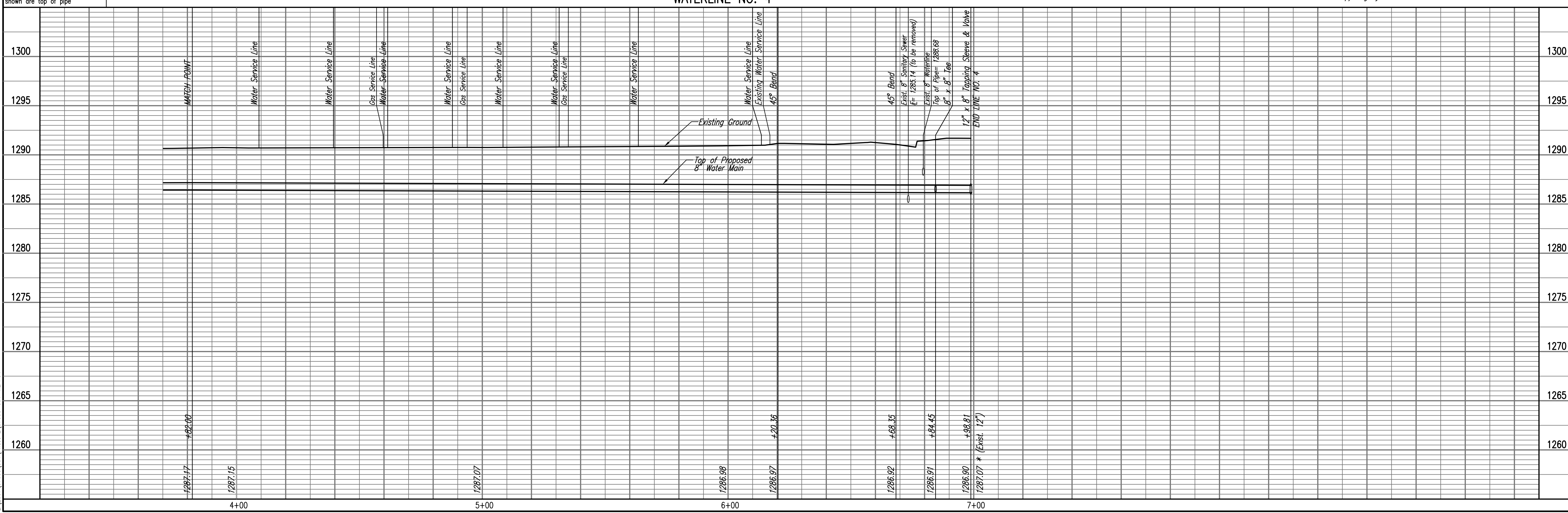
CAUTION !!!
 Existing 8" Waterline *
 Remove existing pipe as necessary and
 Cut-in 1- 8" CI CL MJ 90° Bend
 Defl.= 90°00'00"
 1- 8" DI CL SJ Pipe (S)
 Plug and Abandon existing 8" Pipe (W)
 Connection to existing pipe shall be made with
 clean swabbed pipe. (Fittings, adaptors, and
 other incidentals as necessary)

CAUTION !!!
 Existing 12" Water Main *
 1- 12" x 8" Tapping Sleeve
 1- 8" Tapping Valve
 1- 6" Valve Box
 (To be furnished and set by
 City of Wichita Water Dept.)
 Top Valve Box El.= 1291.7

*** PRIOR TO BEGINNING CONSTRUCTION, THE CONTRACTOR SHALL
 EXCAVATE THE EXISTING 8" WATERLINE AT WL 4, STA. 6+84.45 AND
 THE EXISTING 12" WATERLINE AT WL 4, STA. 6+98.81 TO VERIFY PIPE
 SIZE, TYPE, FITTINGS, AND HORIZONTAL AND VERTICAL LOCATION. THE
 CONTRACTOR SHALL REPORT HIS FINDINGS TO THE ENGINEER SO THAT
 ANY NECESSARY PLAN MODIFICATIONS CAN BE MADE. ANY ADDITIONAL
 LABOR OR MATERIALS NECESSARY TO COMPLETE THE CONNECTION
 SHALL BE CONSIDERED SUBSIDIARY TO THE PROJECT.**

SEE SHEETS NO. 51-55 FOR PAVEMENT REMOVAL AND
 REPLACEMENT LIMITS, ESTIMATED QUANTITIES, AND DETAILS.

✕ = Denotes Pipe to be removed or abandoned in place.
 □ = Denotes Cap/Plug by the contractor



RELOCATION OF SANITARY SEWER NO. 23
 PHASE 2: KELLOGG/GROVE TO FAWNEE/1-135
WATERLINE NO. 4
 JAMES L. ARMOUR, P.E. - CITY ENGINEER
 CITY OF WICHITA PROJECT NO. 468-84375

Professional Engineering Consultants, P.A.
 803 S. TOPICKA AVENUE, SUITE 200, WICHITA, KANSAS 67202
 316.262.2691 • FAX 316.262.3003

Designed By: MDK, EJB
 Drawn By: CSJ, JAN
 Job No.: 35-07600-001
 Date: AUGUST 2008

Sheet 50 of 75