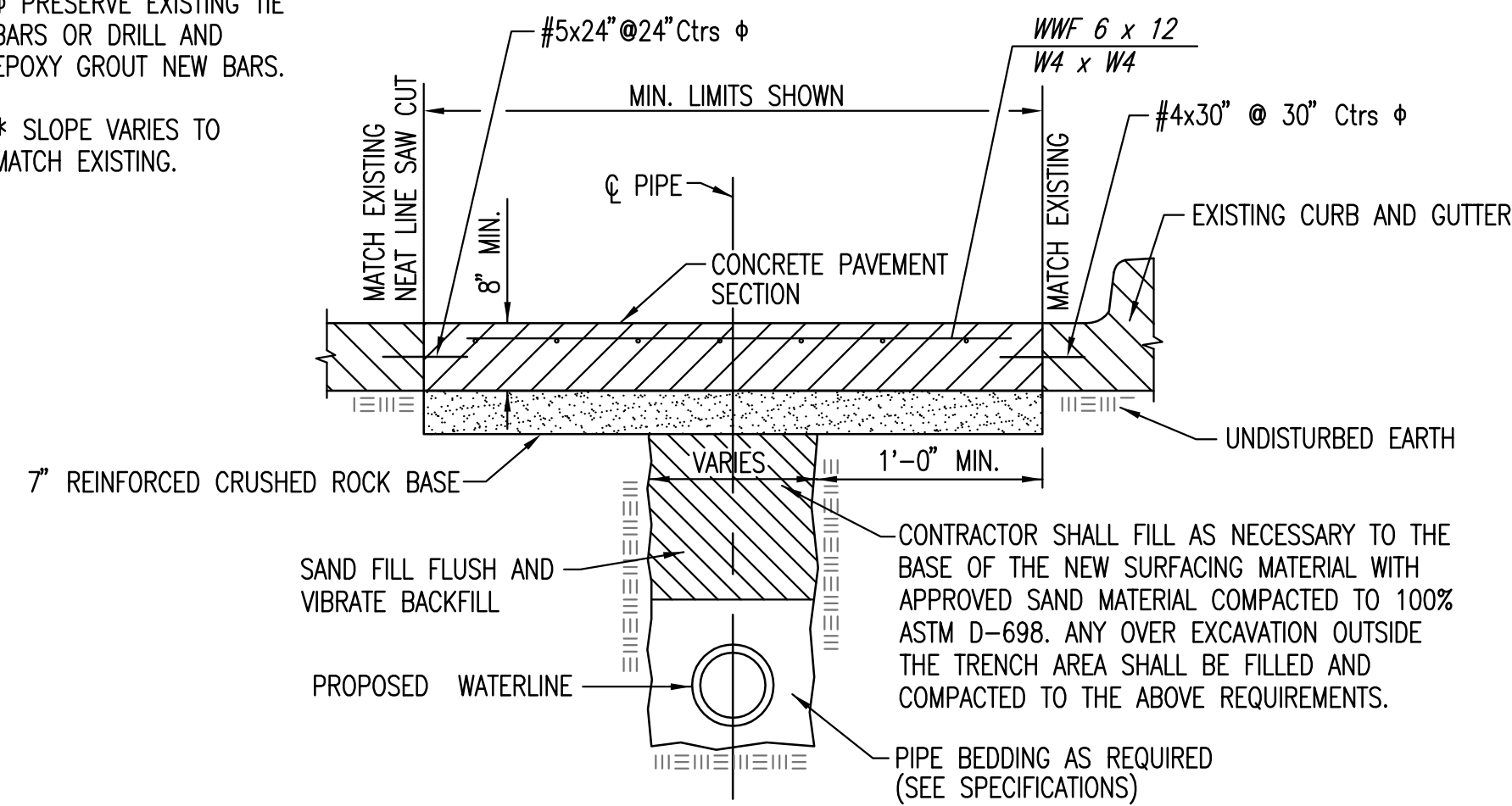


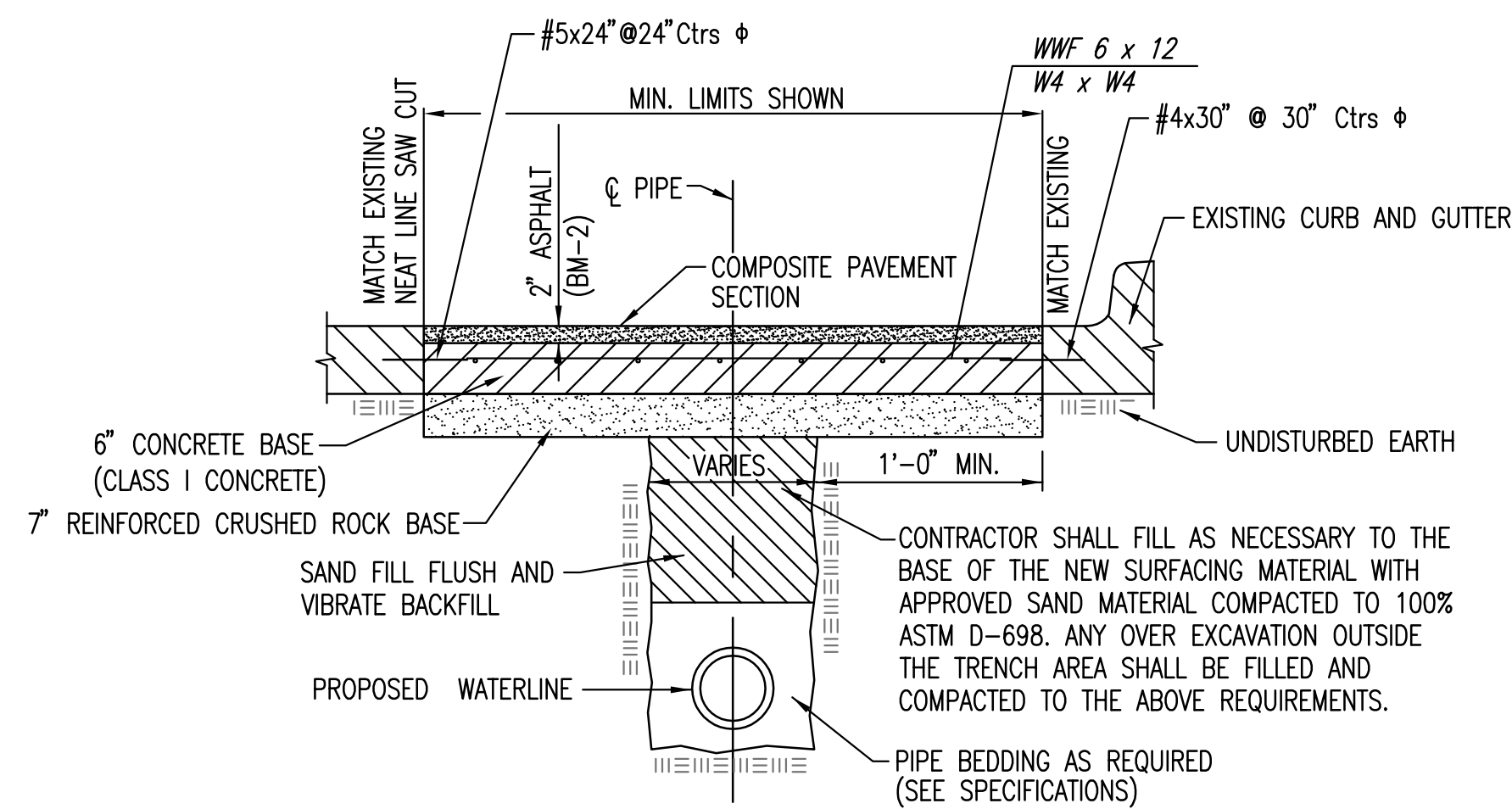
Φ PRESERVE EXISTING TIE BARS OR DRILL AND EPOXY GROUT NEW BARS.

* SLOPE VARIES TO MATCH EXISTING.

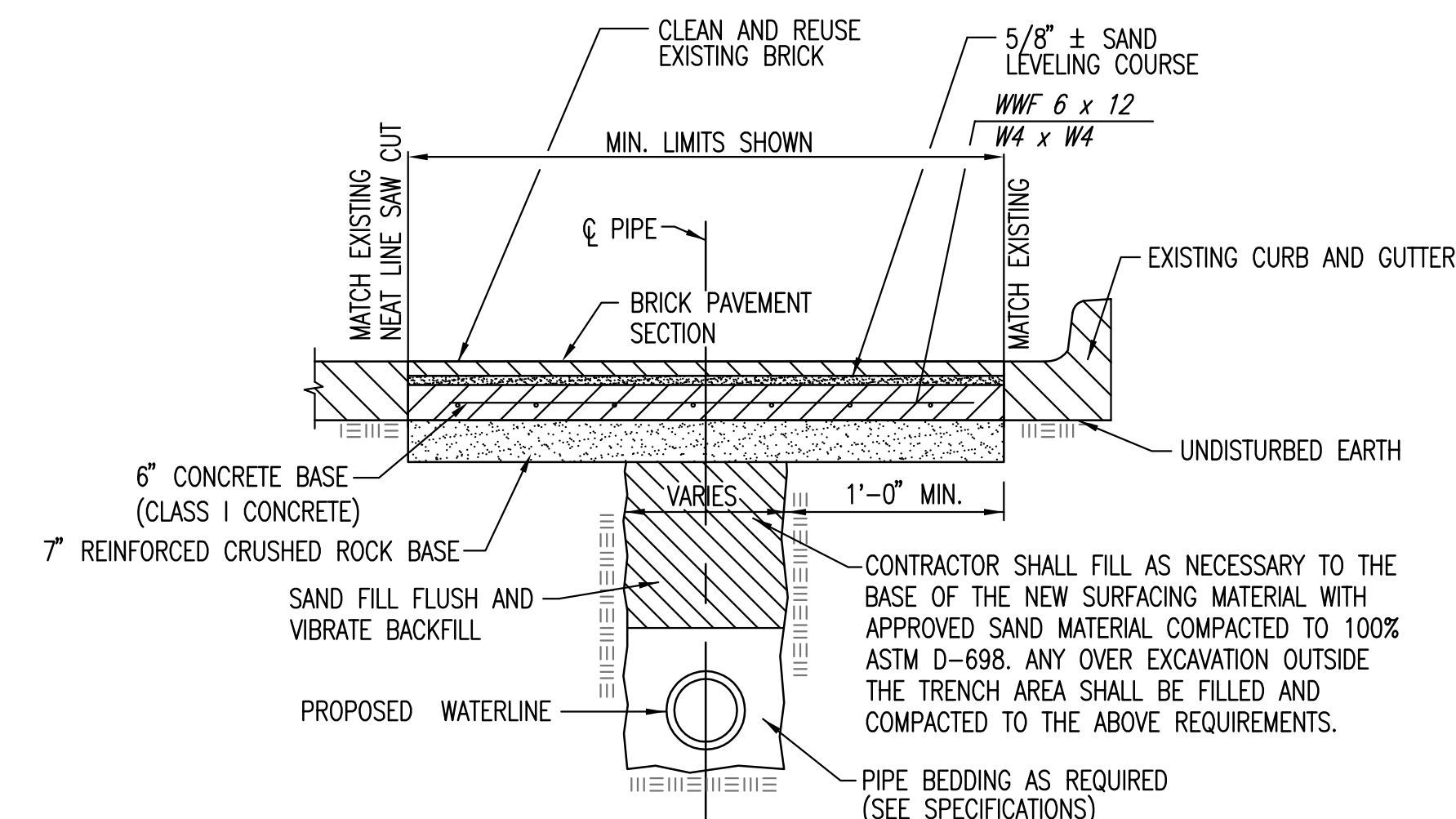


CONCRETE PAVEMENT REMOVAL AND REPLACEMENT DETAIL

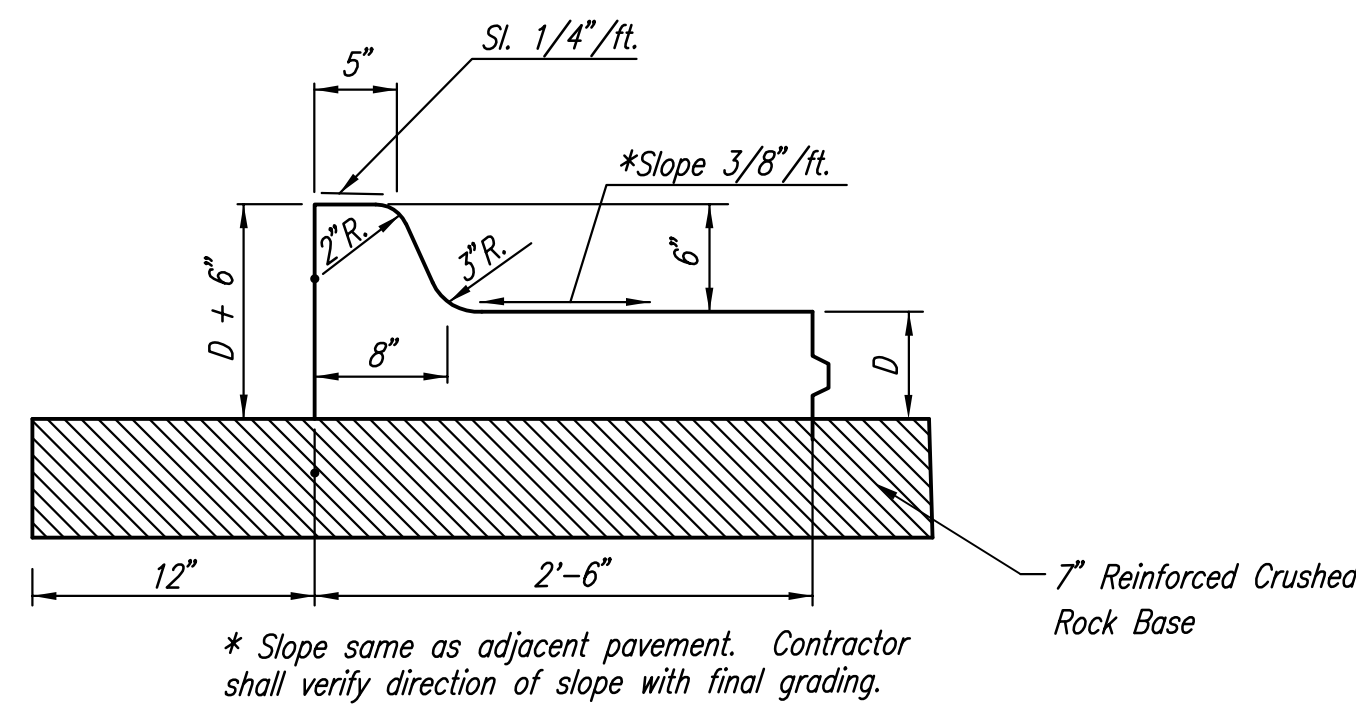
NOTE: CONTRACTOR SHALL SAW CUT AND SEAL JOINT LINES TO MATCH THE EXISTING JOINT PATTERN.



COMPOSITE PAVEMENT REMOVAL AND REPLACEMENT DETAIL

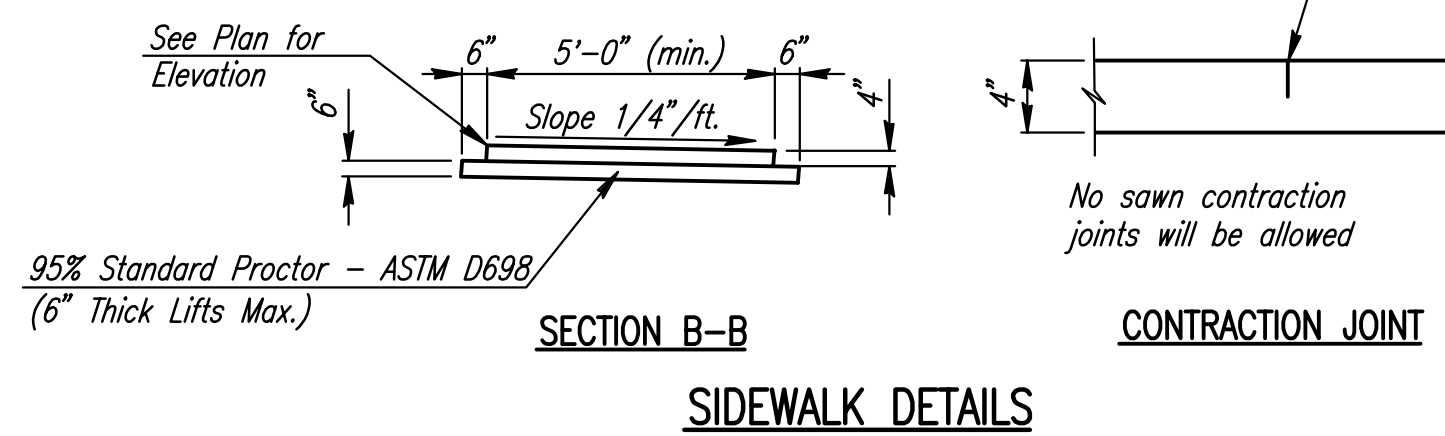
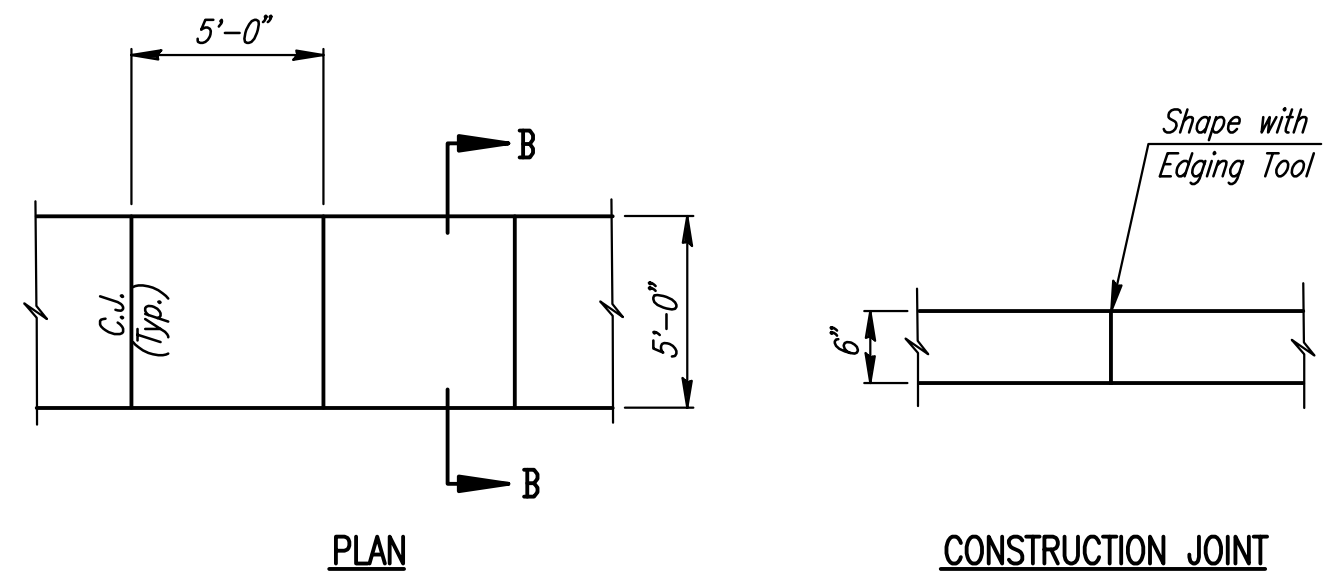


BRICK PAVEMENT REMOVAL AND REPLACEMENT DETAIL

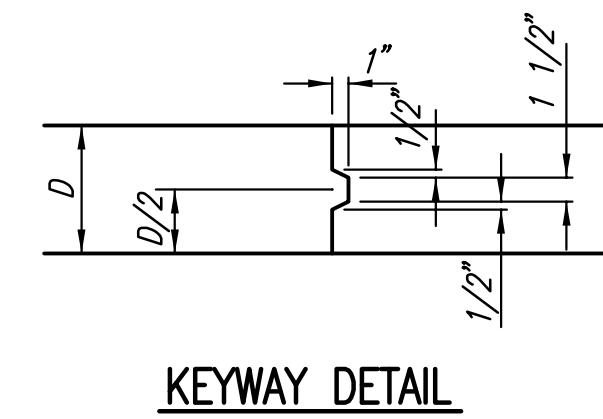


COMBINED CURB AND GUTTER

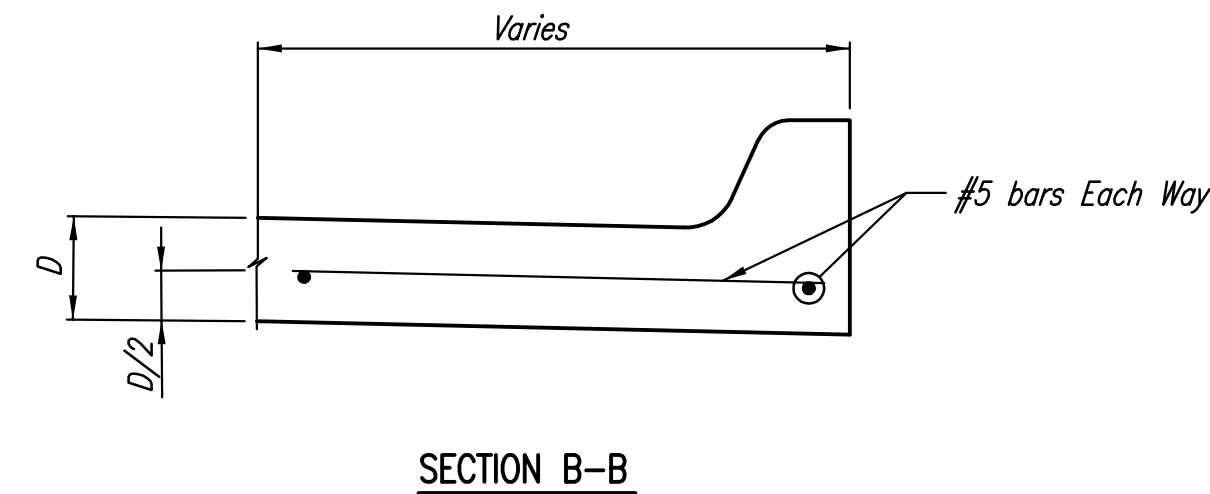
* Slope same as adjacent pavement. Contractor shall verify direction of slope with final grading.



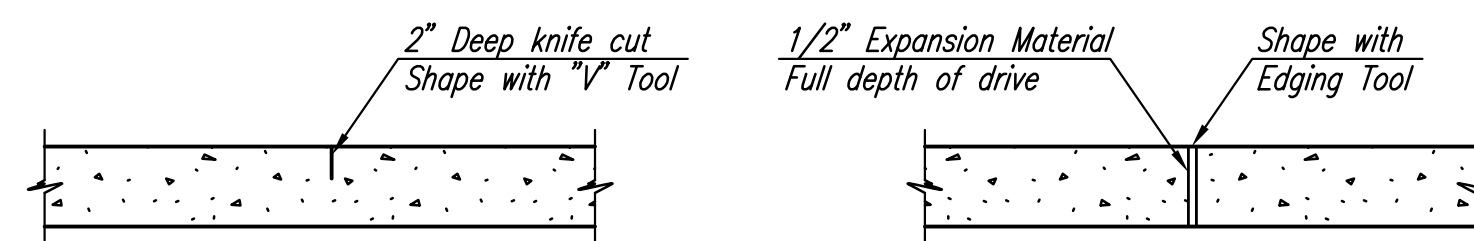
CONTRACTION JOINT



KEYWAY DETAIL

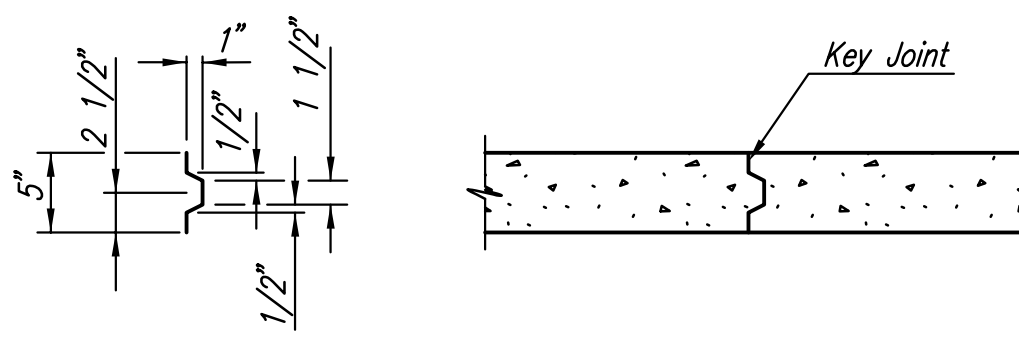


SECTION B-B



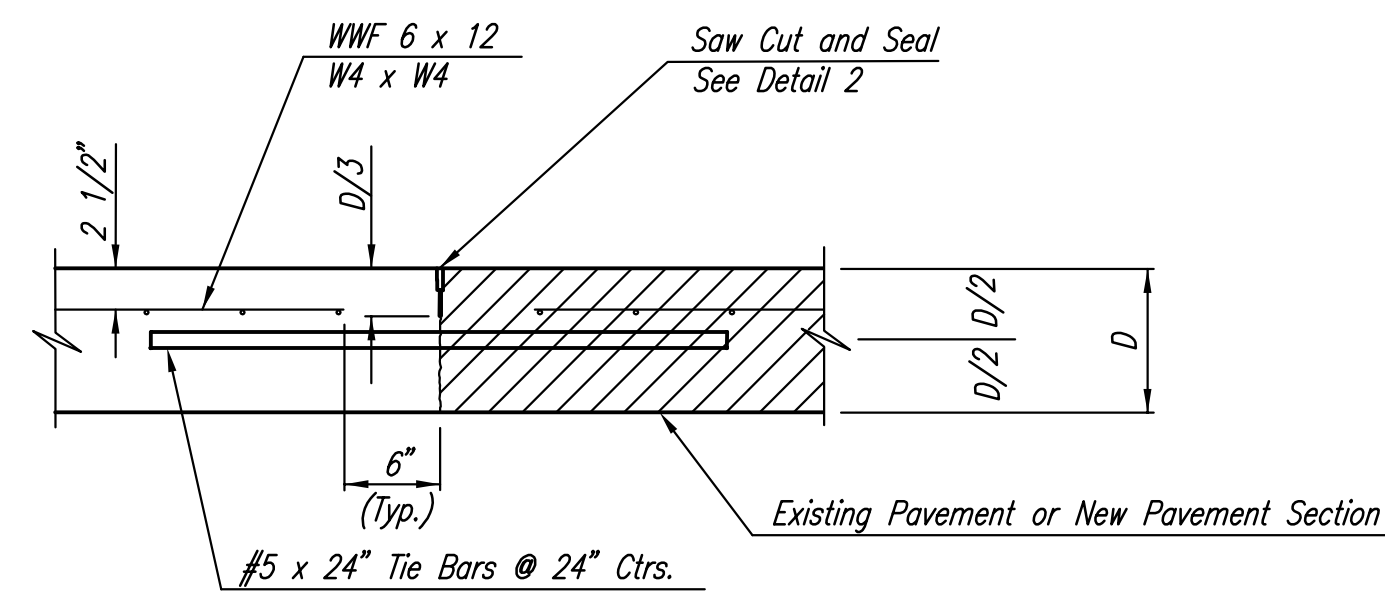
CONTRACTION JOINT (C.J.) OR LONGITUDINAL JOINT (L.J.)

EXPANSION JOINT (E.J.)

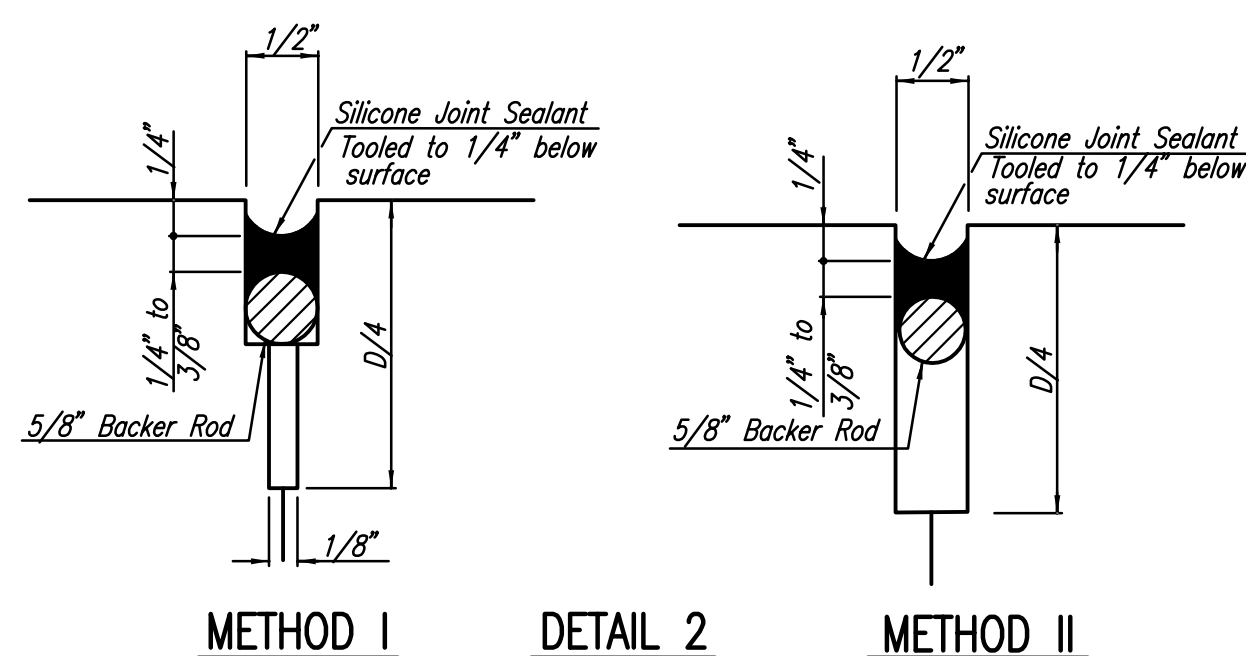


ALT. LONGITUDINAL CONSTRUCTION JOINT

JOINT DETAILS FOR CONCRETE DRIVES



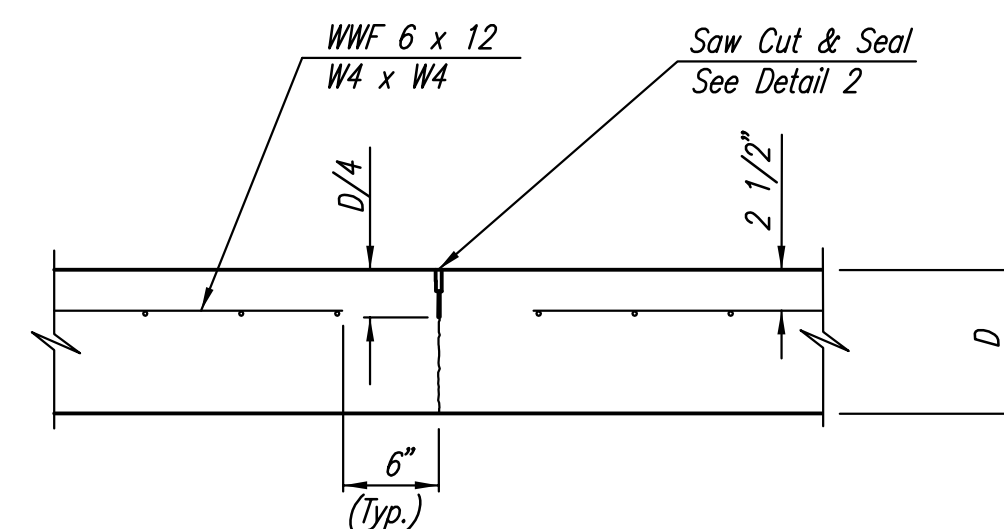
LONGITUDINAL JOINT DETAIL REINFORCED PAVEMENT (TRANSVERSE SECTION) (L.J.)



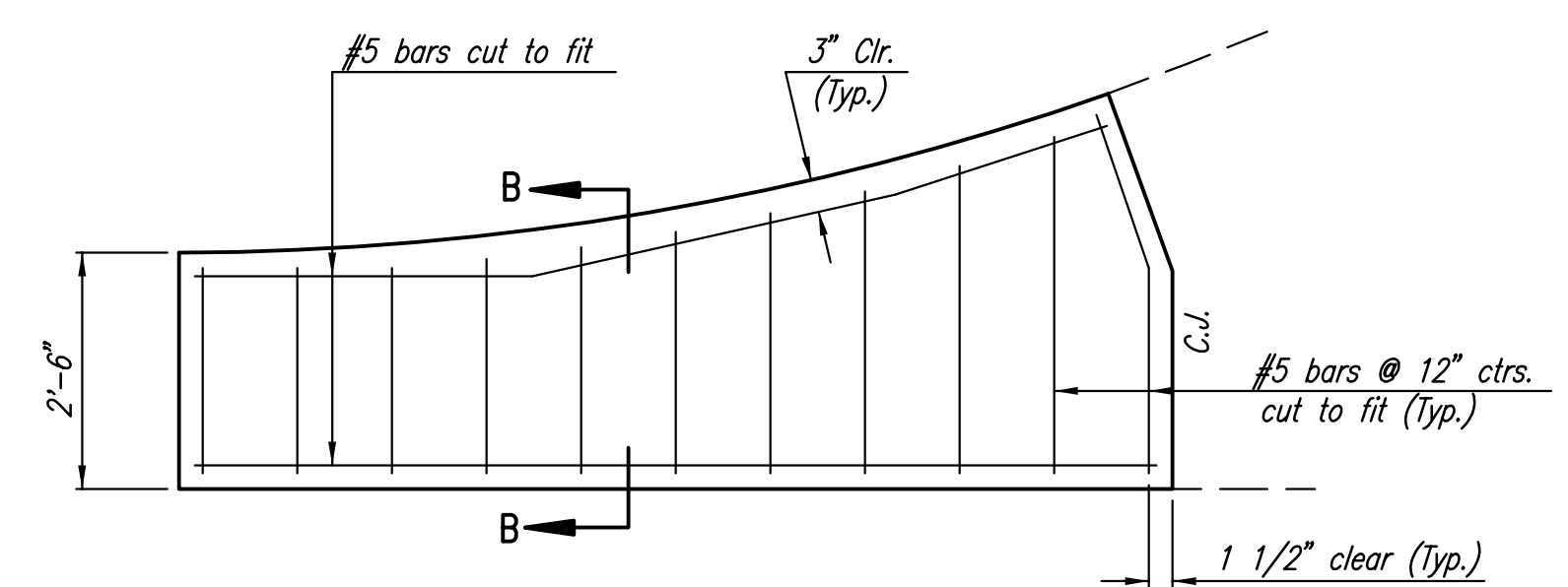
METHOD 1

DETAIL 2

METHOD 2

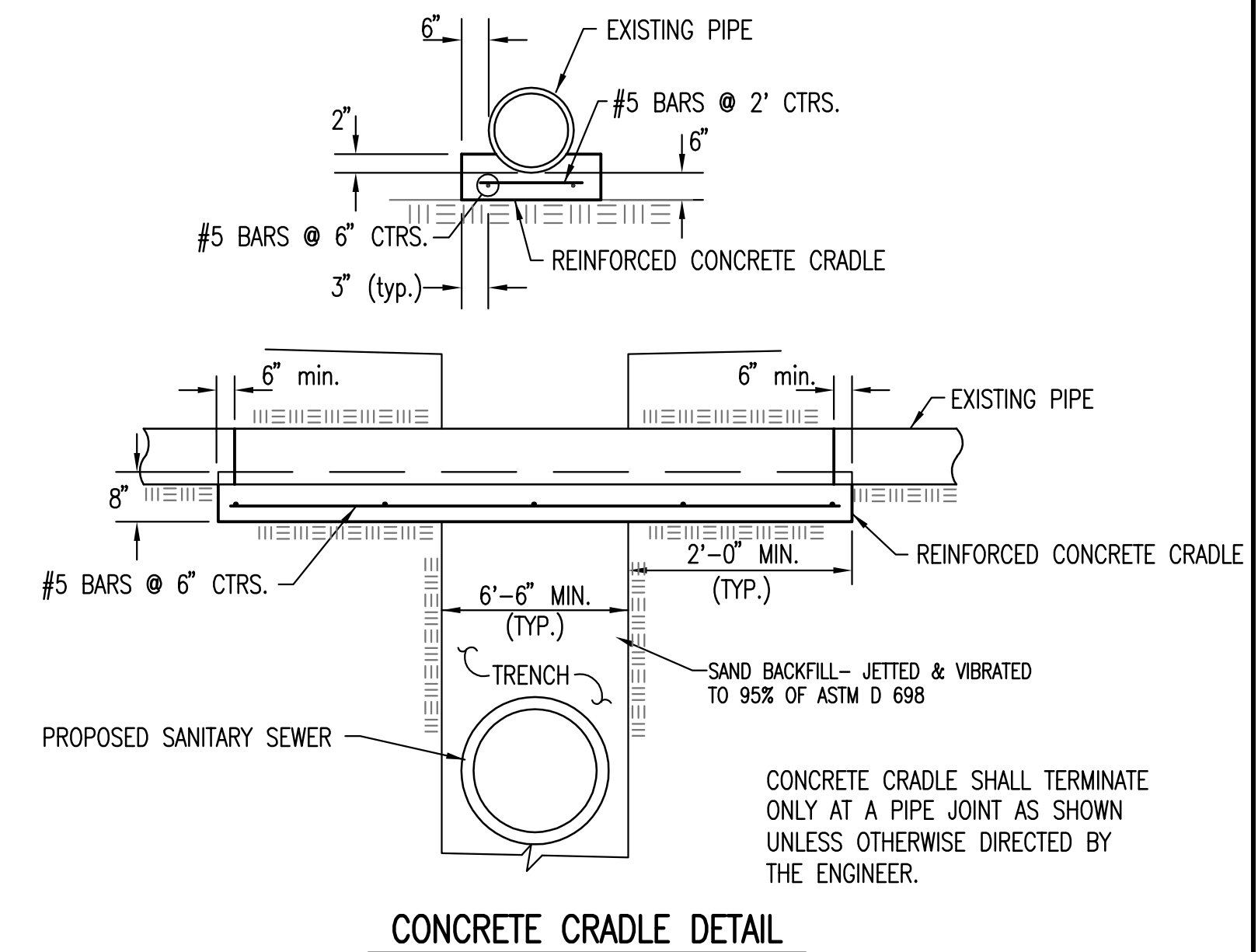


CONTRACTION JOINT DETAIL REINFORCED PAVEMENT



WING REINFORCING DETAIL

NOTE: OMIT WIRE FABRIC REINFORCING IN THIS SECTION.



CONCRETE CRADLE DETAIL

CONCRETE CRADLE SHALL TERMINATE ONLY AT A PIPE JOINT AS SHOWN UNLESS OTHERWISE DIRECTED BY THE ENGINEER.

Sawed 03-02-2010 4:28:26 PM by: CSL
Plot Scale 1:1 03-02-2010 4:28:57 PM by: CSL
03-2007\07600\001\Phase 2\07600-001-C-Pavement Details

No.	Revision	By	Date
RELOCATION OF SANITARY SEWER NO. 23 PHASE 2: KELLOGG/GROVE TO PAWNEE/1-135 PAVEMENT DETAILS JAMES L. ARMOUR, P.E. - CITY ENGINEER CITY OF WICHITA PROJECT NO. 468-84375 Professional Engineering Consultants, P.A. 303 S. TOPEKA • WICHITA, KANSAS 67202 316-262-2691 • FAX 316-262-3003			
Designed by	MDK, EJB	Job No.	35-07600-001
Drawn by	CSL, JAN	Date	AUGUST 2008
			Sht. 54 of 75