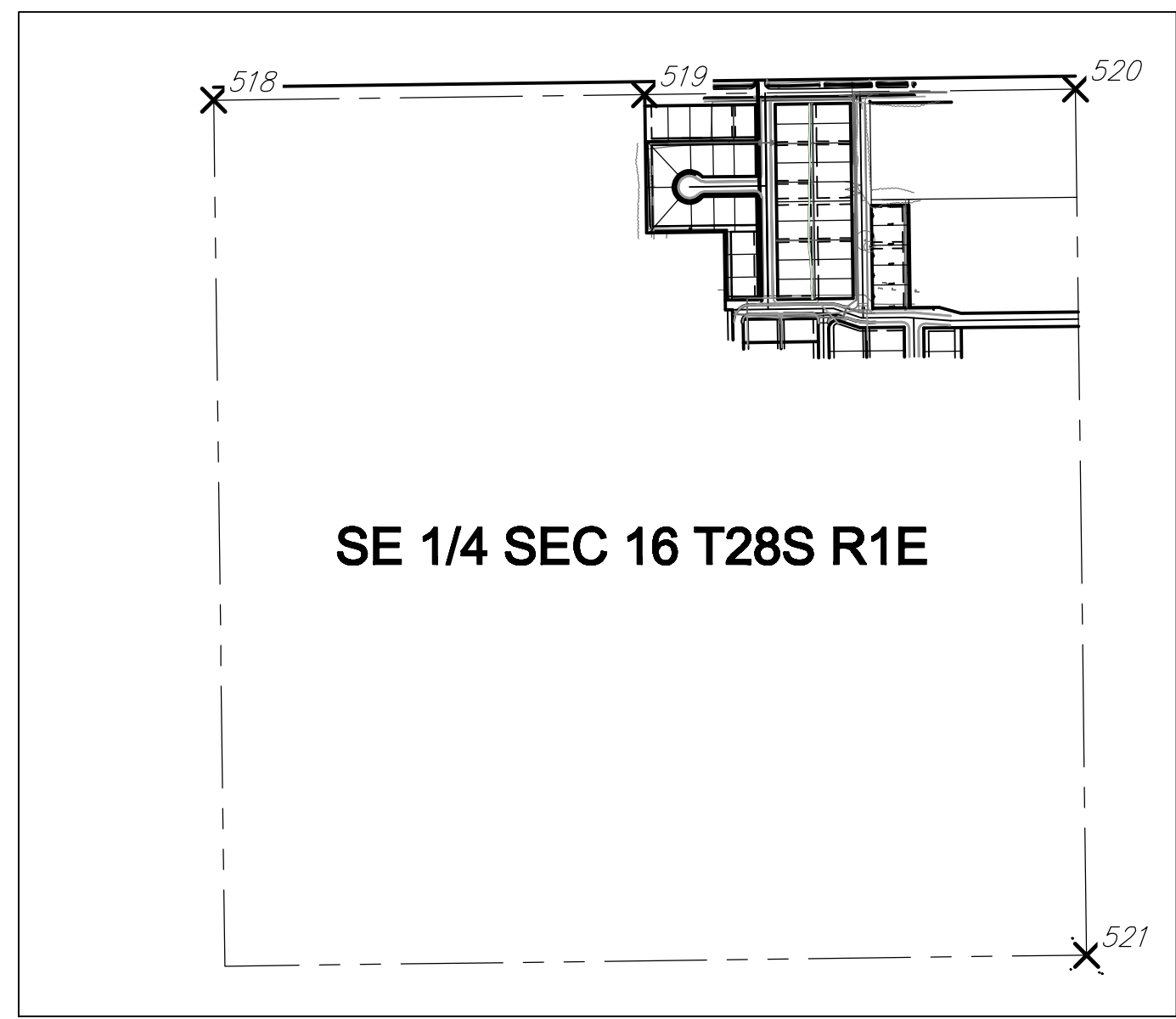



Point Table			
Point #	Northing	Easting	Description
500	1659455.22	1654418.28	ADDITION CORNER
501	1659456.43	1654518.93	BLOCK CORNER
502	1659457.14	1654578.93	BLOCK CORNER
504	1659430.63	1654870.32	ADDITION CORNER
505	1659432.00	1654985.32	ADDITION CORNER
506	1659746.17	1654980.98	ADDITION CORNER
507	1659744.74	1654865.99	ADDITION CORNER
508	1660058.08	1654801.66	ADDITION CORNER
509	1660055.09	1654570.68	BLOCK CORNER
510	1660054.32	1654510.68	BLOCK CORNER
511	1660049.92	1654171.05	ADDITION CORNER
512	1659661.06	1654176.60	ADDITION CORNER
513	1659663.91	1654415.30	ADDITION CORNER
514	1659774.34	1654514.55	BLOCK CORNER
515	1659834.34	1654513.72	BLOCK CORNER
516	1659772.20	1654348.51	PC
517	1659832.19	1654347.74	PT
518	1660067.83	1652849.08	NW CORN SE QUARTER S16T28SR1E
519	1660084.92	1654170.55	NW CORN NE 1/4 SE 1/4 S16T28SR1E
520	1660102.01	1655492.02	NE CORN SE 1/4 S16T28SR1E
521	1657446.29	1655526.06	SE CORN SE 1/4 S16T28SR1E



**CAROL JEAN 2ND/HOBBS VILLAGE ADDITION
KEY MAP
WICHITA, KANSAS**



Ruggles & Bohm, P.A.
Engineering, Surveying, Land Planning

324 North Main
Wichita, Kansas 67203
www.rbkansas.com

(316) 264-8999
(316) 264-4821 fax
E-mail: info@rbkansas.com

DESIGNED BY: Engineering Base [KEY MAP]

PROJECT NUMBER: _____

DATE: Sept. 2, 2009

SCALE: AS SHOWN

PROJECT: 3311E

SHEET: 20 OF 25