

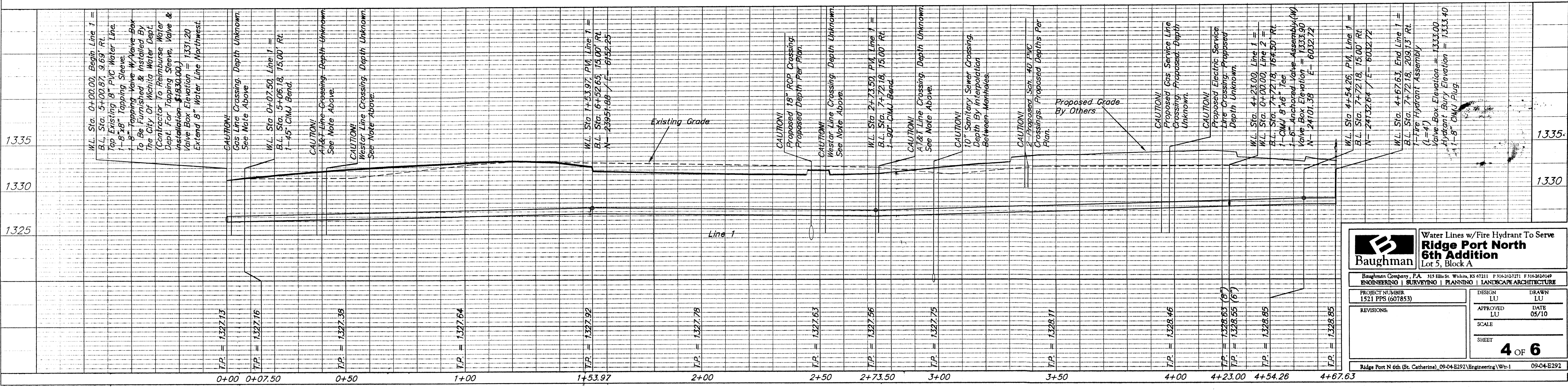
**BENCHMARK-1:**  
 "□" TOP OF INLET SE OF SE COR.  
 LOT 2 RIDGE PORT NORTH  
 ELEV.=1330.89 (NAVD88)

**BENCHMARK-2:**  
 "□" TOP OF CURB SOUTH END OF  
 SOUTH MEDIAN AT ENTRANCE ON  
 37TH STREET NORTH  
 ELEV.=1333.39 (NAVD88)

**BENCHMARK-3:**  
 "□" TOP OF CURB WEST END OF  
 ENTRANCE TO RETIREMENT COMPLEX  
 ELEV.=1331.62 (NAVD88)

Contractor Shall Follow All Applicable  
 Best Management Practices (BMP)  
 For Erosion Control.

Contractor To Use Extreme Caution  
 When Excavating Near Utility Lines.  
 Contractor To Hand Dig To Expose All  
 Utility Lines Prior To Construction.  
 Verify Depth To Determine Conflict If Any.



**Baughman** Water Lines w/Fire Hydrant To Serve  
**Ridge Port North**  
**6th Addition**  
 Lot 5, Block A

Baughman Company, P.A. 315 Ellis St. Wichita, KS 67211 P: 316-262-2721 F: 316-262-1649  
 ENGINEERING | SURVEYING | PLANNING | LANDSCAPE ARCHITECTURE

PROJECT NUMBER: 1521 PPS (607853) DESIGN: LU DRAWN: LU  
 APPROVED: LU DATE: 05/10  
 REVISIONS: SCALE: SHEET: 4 OF 6

Ridge Port N 6th (St. Catherine), 09-04-E292 (Engineering) Wb-1 09-04-E292