

Southeast Corner Lot 5, Block A,
Ridge Port North 6th Addition =
B.L. Sta. 5+00.

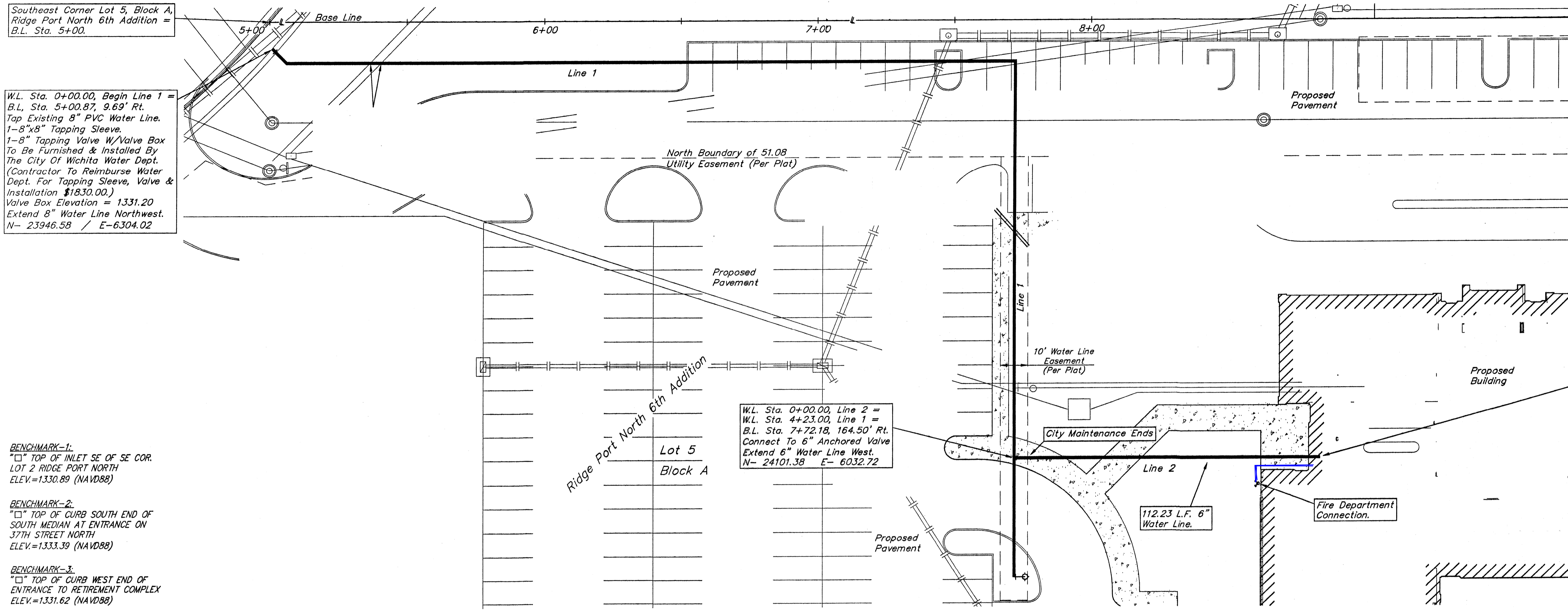
W.L. Sta. 0+00.00, Begin Line 1 =
B.L. Sta. 5+00.87, 9.69' Rt.
Tap Existing 8" PVC Water Line.
1-8"x8" Tapping Sleeve.
1-8" Tapping Valve W/Valve Box
To Be Furnished & Installed By
The City Of Wichita Water Dept.
(Contractor To Reimburse Water
Dept. For Tapping Sleeve, Valve &
Installation \$1830.00.)
Valve Box Elevation = 1331.20
Extend 8" Water Line Northwest.
N- 23946.58 / E-6304.02

BENCHMARK-1:
"□" TOP OF INLET SE OF SE COR.
LOT 2 RIDGE PORT NORTH
ELEV.=1330.89 (NAVD88)

BENCHMARK-2:
"□" TOP OF CURB SOUTH END OF
SOUTH MEDIAN AT ENTRANCE ON
37TH STREET NORTH
ELEV.=1333.39 (NAVD88)

BENCHMARK-3:
"□" TOP OF CURB WEST END OF
ENTRANCE TO RETIREMENT COMPLEX
ELEV.=1331.62 (NAVD88)

SCALE:
1" = 20' HORIZONTAL
1" = 5' VERTICAL



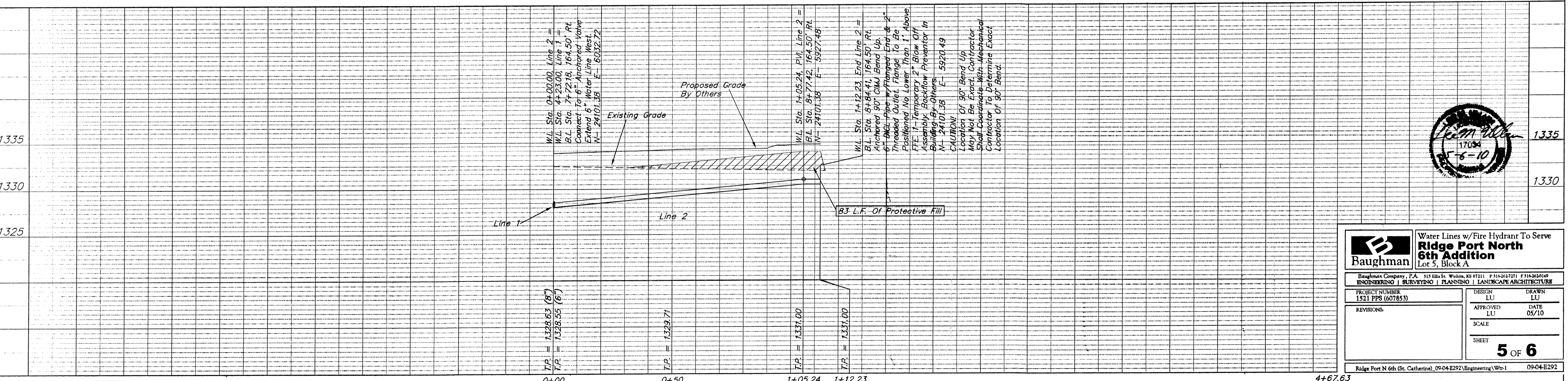
W.L. Sta. 0+00.00, Line 2 =
W.L. Sta. 4+23.00, Line 1 =
B.L. Sta. 7+72.18, 164.50' Rt.
Connect To 6" Anchored Valve
Extend 6" Water Line West.
N- 24101.38 E- 6032.72

W.L. Sta. 1+12.23, End Line 2 =
B.L. Sta. 8+84.41, 164.50' Rt.
Anchored 90° CIMJ Bend Up.
6" DICL Pipe w/Flanged End & 2"
Threaded Outlet. Flange To Be
Positioned No Lower Than 1' Above
FFE. 1-Temporary 2" Blow Off
Assembly. Backflow Preventor In
Building By Others.
N- 24101.38 E- 5920.49

CAUTION!
Location Of 90° Bend Up
May Not Be Exact. Contractor
Shall Coordinate With Mechanical
Contractor To Determine Exact
Location Of 90° Bend.

Contractor Shall Follow All Applicable
Best Management Practices (BMP)
For Erosion Control.

Contractor To Use Extreme Caution
When Excavating Near Utility Lines.
Contractor To Hand Dig To Expose All
Utility Lines Prior To Construction.
Verify Depth To Determine Conflict If Any.



Baughman Water Lines w/Fire Hydrant To Serve
Ridge Port North 6th Addition
Lot 5, Block A

Baughman Company, P.A. 315 Ellis St. Wichita, KS 67211 P 316-262-7271 F 316-262-0149
ENGINEERING | SURVEYING | PLANNING | LANDSCAPE ARCHITECTURE

PROJECT NUMBER 1521 PPS (607853)	DESIGN LU	DRAWN LU
REVISIONS:	APPROVED LU	DATE 05/10
SCALE		SHEET 5 OF 6

Ridge Port N 6th (St. Catherine), 09-04-E292 (Engineering)\Wtr-1 09-04-E292