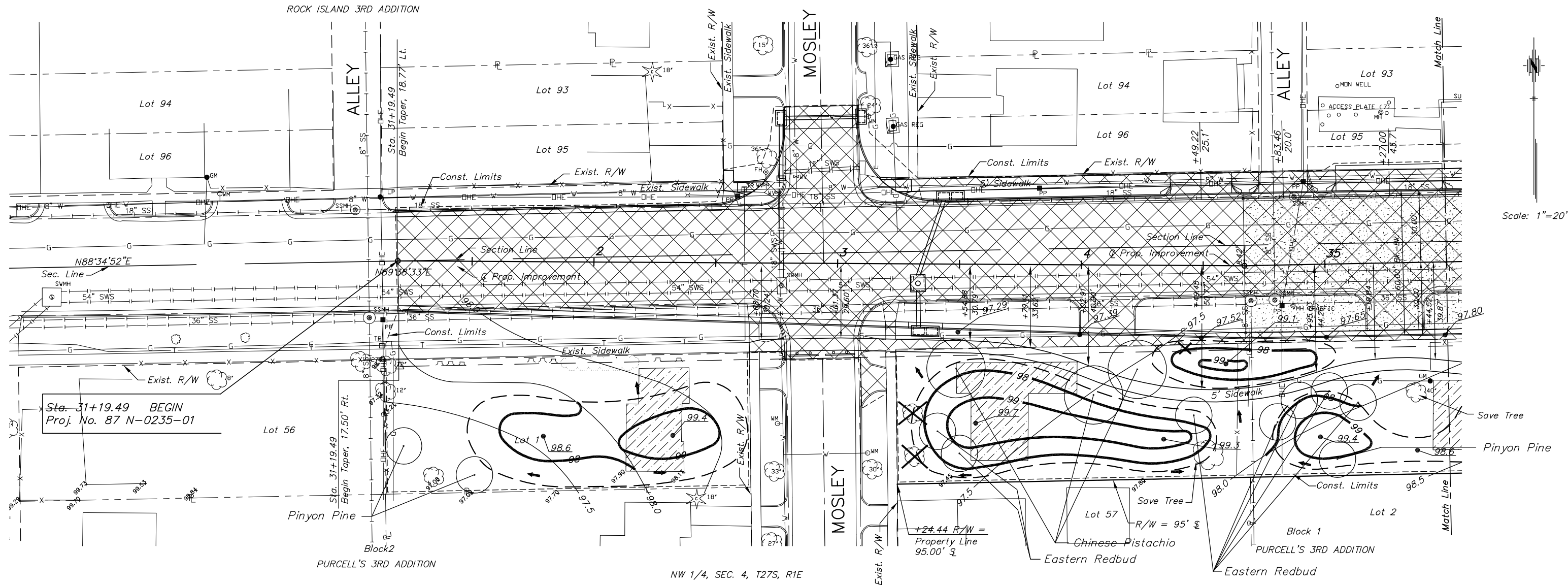


STATE	PROJECT NO.	YEAR	SHEET NO.	SHEETS
KANSAS	87 N-0235-01	2006	65	120

SW 1/4, SEC. 33, T27S, R1E

ROCK ISLAND 3RD ADDITION



Scale: 1"=20'

PLANT LIST (THIS SHEET)

QTY.	COMMON NAME	BOTANICAL NAME	SIZE/COMMENT
LARGE SHADE TREES			
EVERGREENS			
3	PINYON PINE	<i>Pinus cembroides</i>	6' Hgt., Balled-in-Burlap
ORNAMENTAL TREES			
3	CHINESE PISTACHIO	<i>Pistacia chinensis</i>	2"-2.5", B&B, Male Single Stem
7	EASTERN REDBUD	<i>Cercis canadensis</i>	2"-2.5", B&B, Single Stem
ORNAMENTAL GRASSES			

LEGEND

- 98.0 ————— Proposed Surface Contour prior to Landscaping
- 98 ————— Landscaping Contour
- - - - - Construction Limits
- - - - - Base of Landscape Berm
- 97.29 ————— Finish Grade Spot Elevation
- 97.80 ————— Existing Grade to Remain
- ← ————— Direction of Surface flow

J:\Civil\04222\dwg\RD_Impro\04222rd01.dwg 01/24/2005 04:39:33 PM CST
 KANSAS DEPARTMENT OF TRANSPORTATION
PAWNEE ROADSIDE IMPROVEMENTS
 STA. 30+00 TO STA. 35+50
 PROJECT NO. 87 N-0235-01 SEDGWICK CO.
M K E C ENGINEERING CONSULTANTS, INC.
 WICHITA, KANSAS

DESIGNED BY: JRA	CHECKED BY: JRA
DRAWN BY: WNJ	DATE: JULY 2004 SHEET 65 OF 120