

PLAN AND PROFILE OF PROPOSED

# MT VERNON STREET AND DRAINAGE IMPROVEMENTS FROM GREENWAY TO BROADWAY

CITY OF WICHITA  
SEDGWICK COUNTY, KANSAS

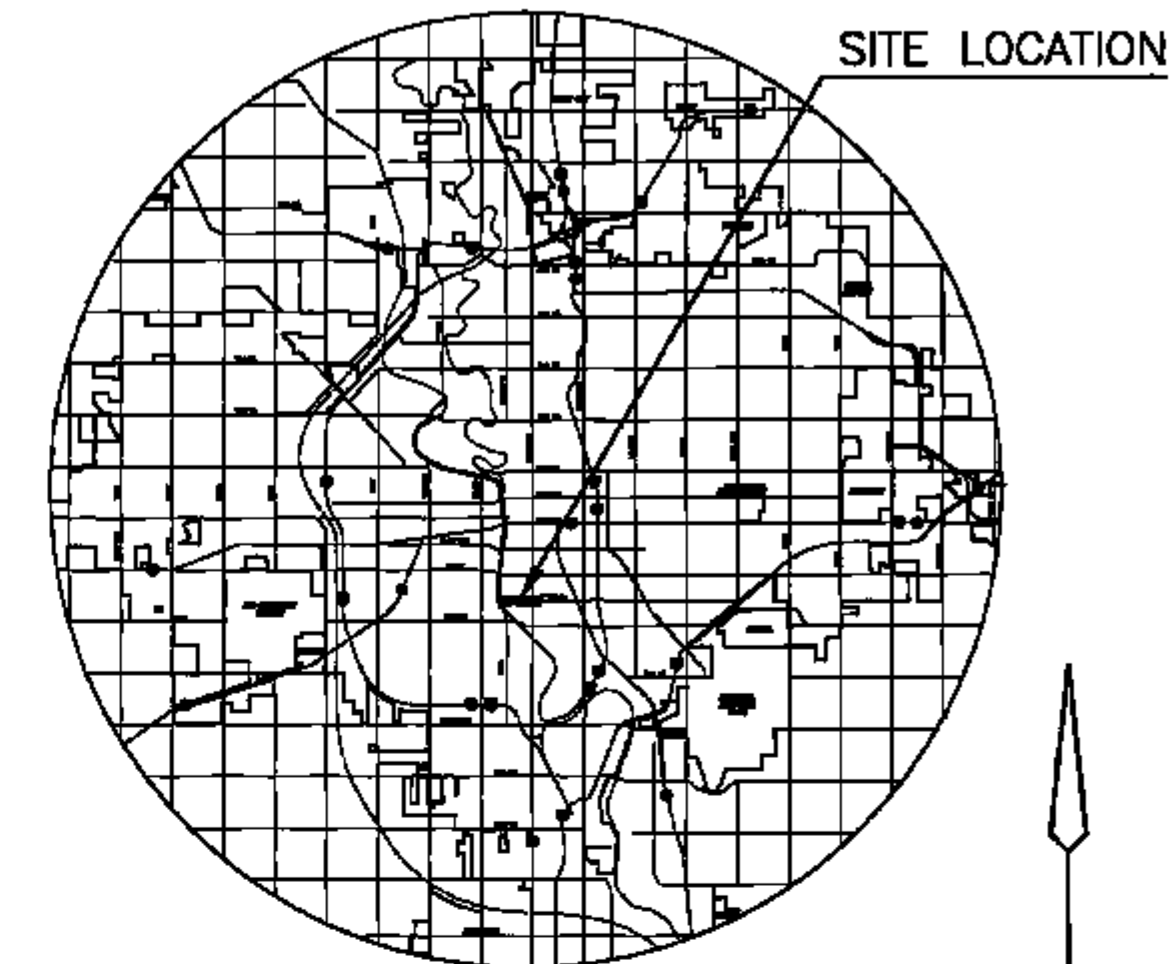
PAVING PROJECT NO. 472-84289  
WATER PROJECT NO. 448-90385  
SANITARY SEWER PROJECT NO. 468-84514

JIM ARMOUR, P.E. - CITY ENGINEER

PAVING O.C.A. NO. 706946  
WATER O.C.A. NO. 636204  
SANITARY SEWER O.C.A. NO. 620509

CORNEJO/NOWAK - CONTRACTOR  
J. KOLECZEK - CITY OF WICHITA, INSPECTOR  
AS-BUILT  
DATE RELEASED: 06/26/2009  
PDF: AROSAS 08/21/2009

**MTC**  
ENGINEERING & ARCHITECTURE  
CONSULTANTS, INC.  
411 N. WEBB ROAD  
WICHITA, KS. 67206  
316-684-9600



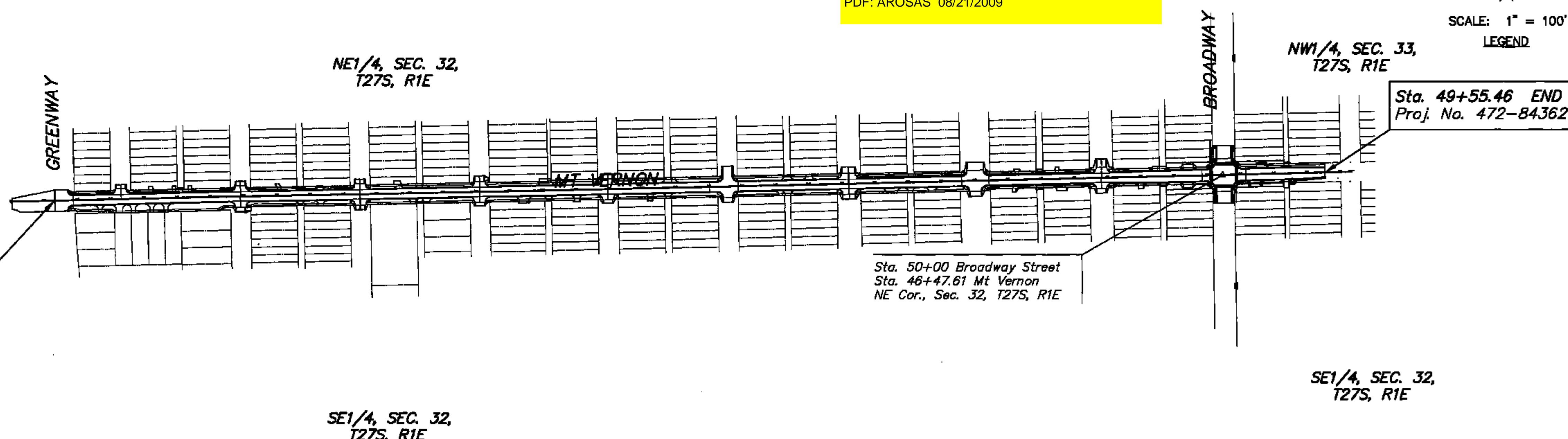
LOCATION MAP



SCALE: 1" = 100'  
LEGEND

## INDEX TO DRAWINGS

SHEET NO	DESCRIPTION
1	TITLE SHEET
2	GENERAL NOTES
3	TYPICAL SECTIONS
4-11	PLAN SHEETS
12-15	PAVING BUBBLE MAPS
16-19	INTERSECTION DETAILS
20-24	PAVING DETAILS
25	STORM SEWER KEY MAP
26-40	STORM SEWER PLAN AND PROFILE
41-43	STORM SEWER BUBBLE MAPS
44-60	STORM SEWER DETAILS
61	MISCELLANEOUS DETAILS
62-65	WATER PLAN AND PROFILE
66-68	WATER DETAILS
69-70	WATER BUBBLE MAPS
71-75	SANITARY SEWER PLAN AND PROFILE
76	SANITARY SEWER BUBBLE MAP
77-78	SUMMARY OF QUANTITIES
79	EROSION CONTROL PLAN
80-84	EROSION CONTROL BMP'S
85	TRAFFIC SIGNAL PLAN
86	TRAFFIC WIRING PLAN
87-89	TRAFFIC SIGNAL DETAILS
90-91	PAVEMENT MARKING & SIGNING PLAN
92-93	SIGNING DETAILS
94	CONSTRUCTION SEQUENCING
95-98	TRAFFIC CONTROL PLAN
99-101	TRAFFIC CONTROL DETAILS
102-120	CROSS SECTIONS



Sta. 11+31.10 BEGIN  
Proj. No. 472-84362

Sta. 50+00 Broadway Street  
Sta. 46+47.61 Mt Vernon  
NE Cor., Sec. 32, T27S, R1E

Sta. 49+55.46 END  
Proj. No. 472-84362

SE1/4, SEC. 32,  
T27S, R1E

SE1/4, SEC. 32,  
T27S, R1E



**MT VERNON STREET AND  
DRAINAGE IMPROVEMENTS  
FROM GREENWAY TO BROADWAY**

**Title Sheet**  
SHEET TITLE 472-84289  
448-90385  
468-84514  
PROJECT NUMBER

DESIGN BY JRA  
DRAWN BY JSB  
CHECKED BY JRA

ISSUED  
May 5, 2008  
REVISED

SHEET NO.  
1 of 120

**MT VERNON STREET AND  
DRAINAGE IMPROVEMENTS  
FROM GREENWAY TO BROADWAY**

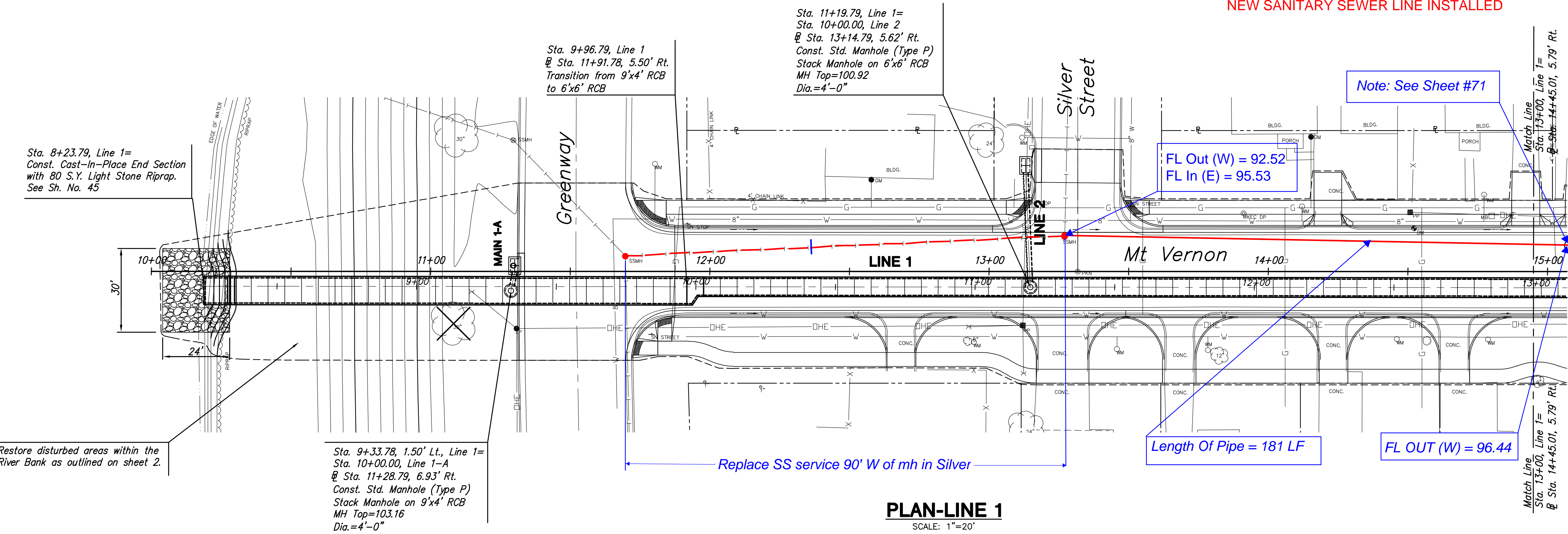
**Storm Line 1  
Sta. 8+23.79  
to  
Sta. 13+00**  
SHEET TITLE 472-84289  
448-90385  
468-84514  
PROJECT NUMBER

DESIGN BY JRA  
DRAWN BY JSB  
CHECKED BY JRA

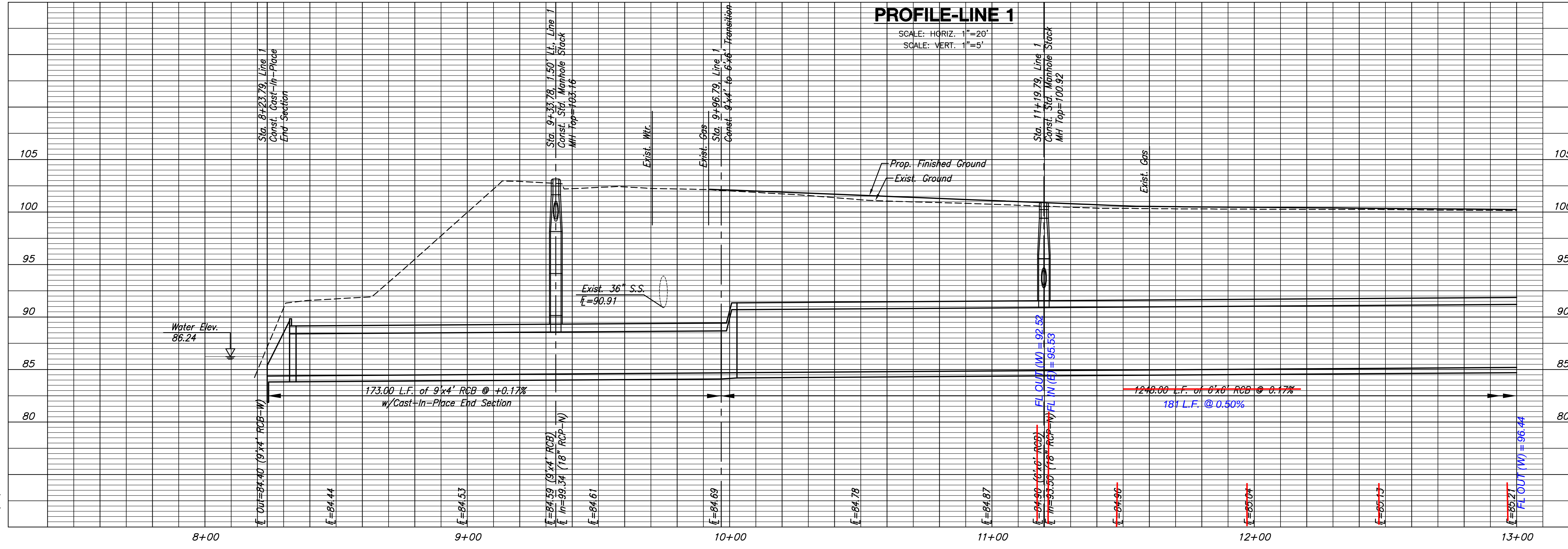
ISSUED May 27, 2008  
REVISED

SHEET NO.  
**26 of 120**

NEW SANITARY SEWER LINE INSTALLED



**PLAN-LINE 1**  
SCALE: 1"=20'



**PROFILE-LINE 1**  
SCALE: HORIZ. 1"=20'  
SCALE: VERT. 1"=5'

Sta. 8+23.79, Line 1=  
Const. Cast-In-Place End Section  
with 80 S.Y. Light Stone Riprap.  
See Sh. No. 45

Sta. 9+96.79, Line 1  
@ Sta. 11+91.78, 5.50' Rt.  
Transition from 9'x4' RCB  
to 6'x6' RCB

Sta. 11+19.79, Line 1=  
Sta. 10+00.00, Line 2  
@ Sta. 13+14.79, 5.62' Rt.  
Const. Std. Manhole (Type P)  
Stack Manhole on 6'x6' RCB  
MH Top=100.92  
Dia.=4'-0"

Note: See Sheet #71

FL Out (W) = 92.52  
FL In (E) = 95.53

Length Of Pipe = 181 LF

FL OUT (W) = 96.44

Sta. 9+33.78, 1.50' Lt., Line 1=  
Sta. 10+00.00, Line 1-A  
@ Sta. 11+28.79, 6.93' Rt.  
Const. Std. Manhole (Type P)  
Stack Manhole on 9'x4' RCB  
MH Top=103.16  
Dia.=4'-0"

Restore disturbed areas within the  
River Bank as outlined on sheet 2.

PLOTTED: Tuesday, May 27, 2008 @ 04:31PM

J:\CIVIL\05620\DWG\SWS\05620-01.DWG

**MT VERNON STREET AND  
DRAINAGE IMPROVEMENTS  
FROM GREENWAY TO BROADWAY**

**Sanitary Sewer  
Line 1**  
SHEET TITLE 472-84289  
448-90385  
468-84514  
PROJECT NUMBER

DESIGN BY JRA  
DRAWN BY JSB  
CHECKED BY JRA

ISSUED  
May 27, 2008  
REVISED

SHEET NO.  
71 of 120

Sta. 0+00.00, Line 1=  
@ Sta. 18+73.47, 11.25' Lt.  
Exist. Manhole. Replace Exist.  
Frame and Lid. Adjust Manhole Top  
Exist. Top=100.19  
Prop. Top=100.49

Remove and Replace 365.4 L.F.  
of 8" Pipe

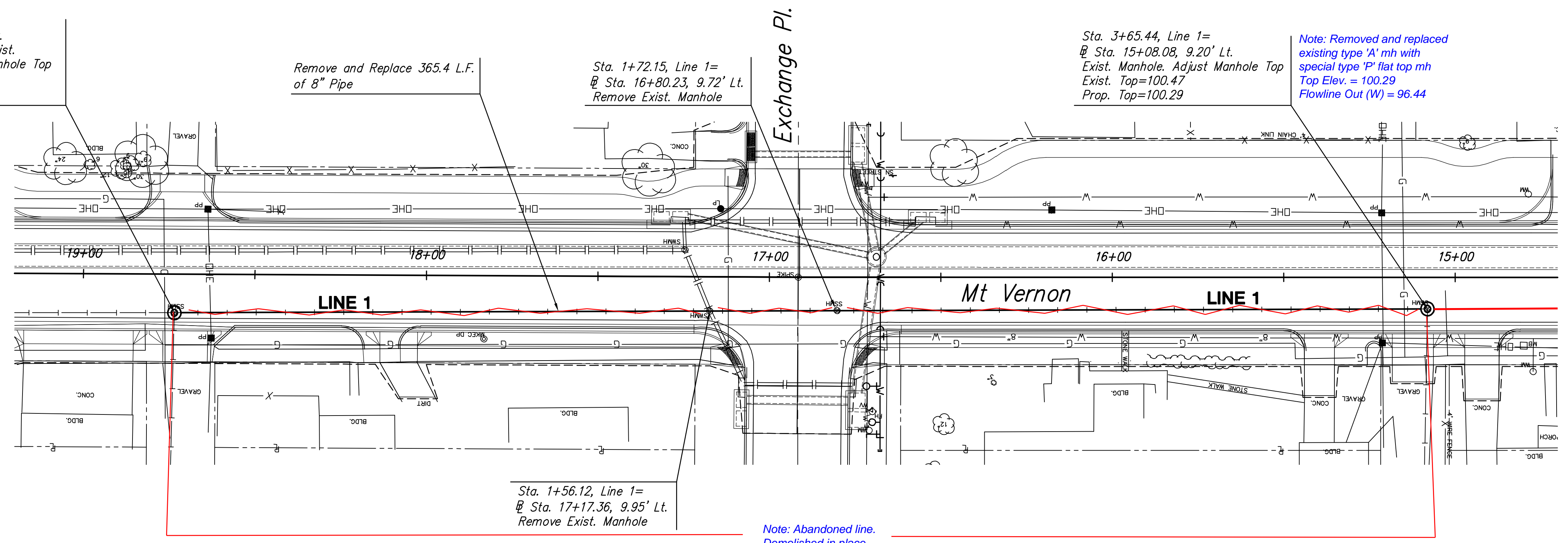
Sta. 1+72.15, Line 1=  
@ Sta. 16+80.23, 9.72' Lt.  
Remove Exist. Manhole

Sta. 3+65.44, Line 1=  
@ Sta. 15+08.08, 9.20' Lt.  
Exist. Manhole. Adjust Manhole Top  
Exist. Top=100.47  
Prop. Top=100.29

Note: Removed and replaced  
existing type 'A' mh with  
special type 'P' flat top mh  
Top Elev. = 100.29  
Flowline Out (W) = 96.44

Sta. 1+56.12, Line 1=  
@ Sta. 17+17.36, 9.95' Lt.  
Remove Exist. Manhole

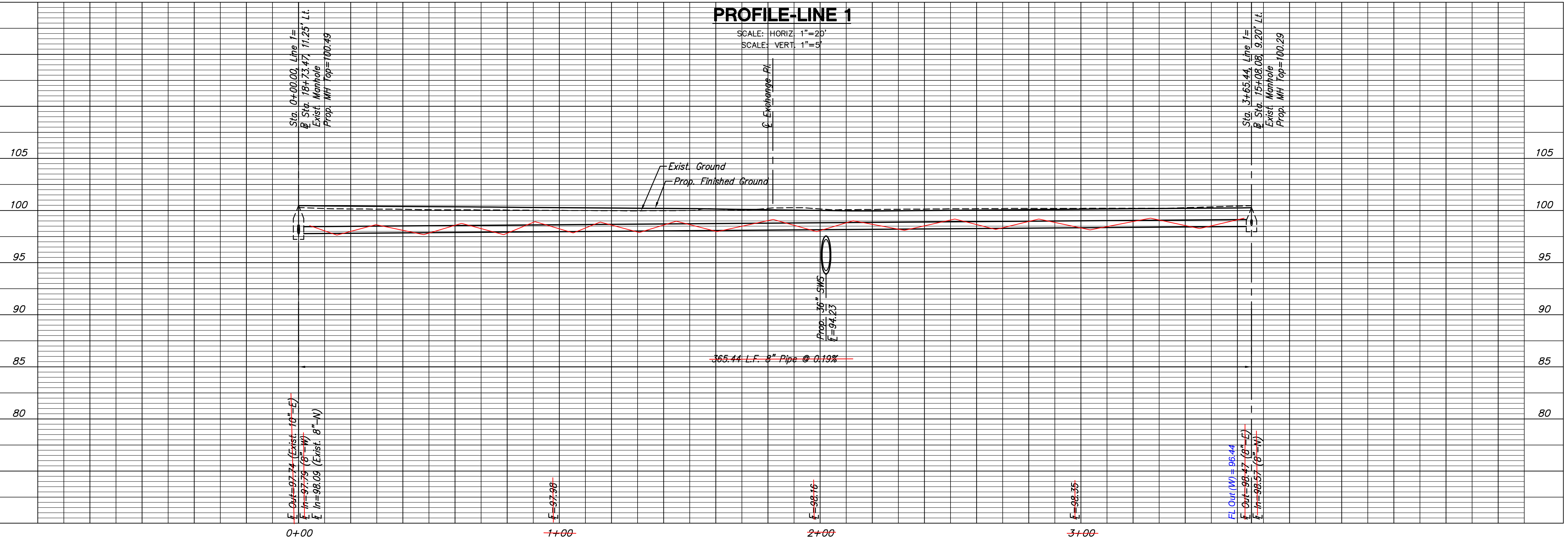
Note: Abandoned line.  
Demolished in place.



**PLAN-LINE 1**

**PROFILE-LINE 1**

SCALE: HORIZ. 1"=20'  
SCALE: VERT. 1"=3'



PLOTTED: Tuesday, May 27, 2008 @ 04:38PM

J:\CIVIL\05620\DWG\PLAN\05620P01.DWG

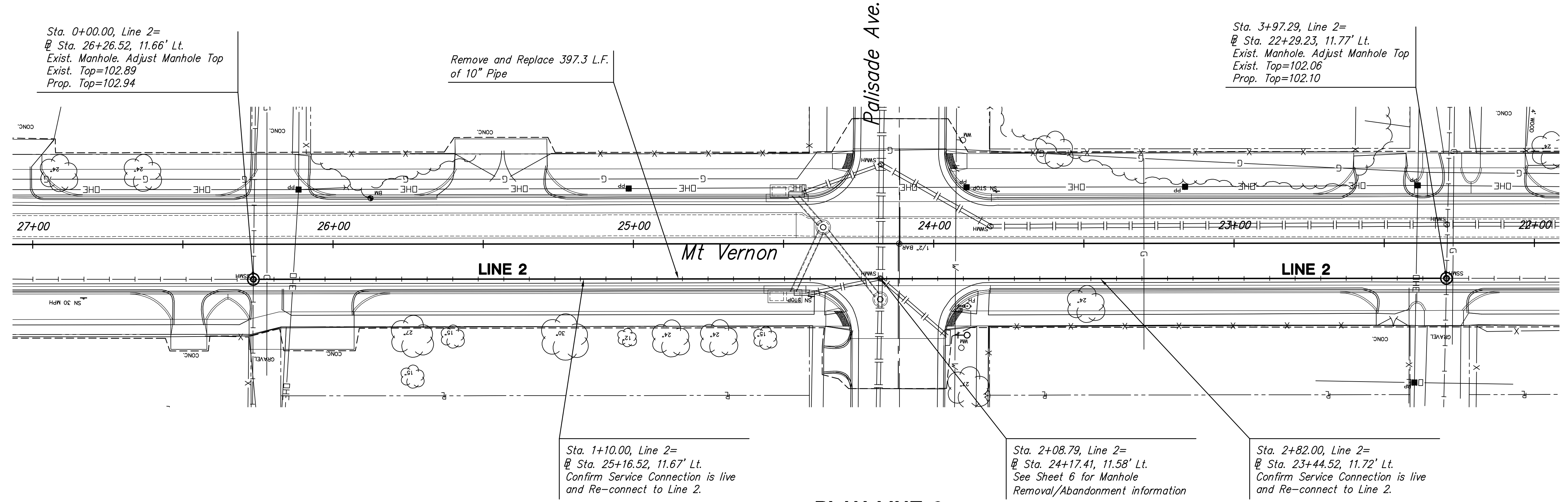
**MT VERNON STREET AND  
DRAINAGE IMPROVEMENTS  
FROM GREENWAY TO BROADWAY**

**Sanitary Sewer  
Line 2**  
SHEET TITLE 472-84289  
448-90385  
468-84514  
PROJECT NUMBER

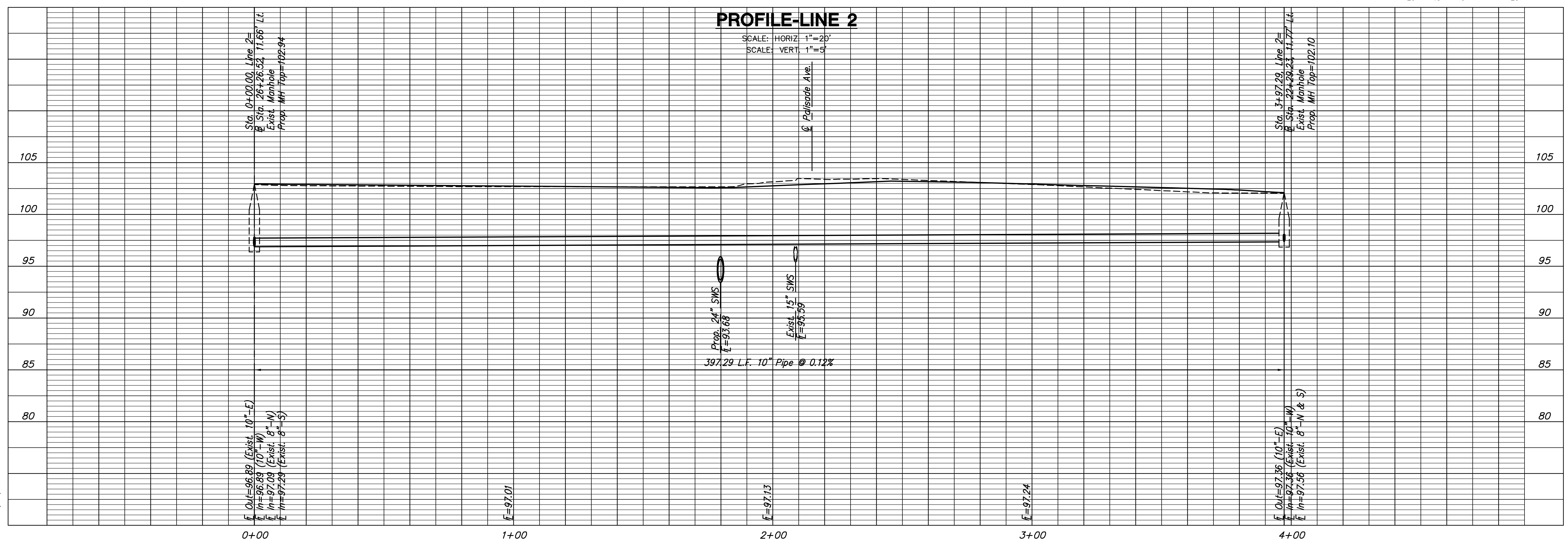
DESIGN BY JRA  
DRAWN BY JSB  
CHECKED BY JRA

ISSUED  
May 27, 2008  
REVISED

SHEET NO.  
72 of 120



**PLAN-LINE 2**



**PROFILE-LINE 2**

PLOTTED: Thursday, May 27, 2008 @ 04:37PM

J:\CIVIL\05620\DWG\SSAN\0562002.DWG

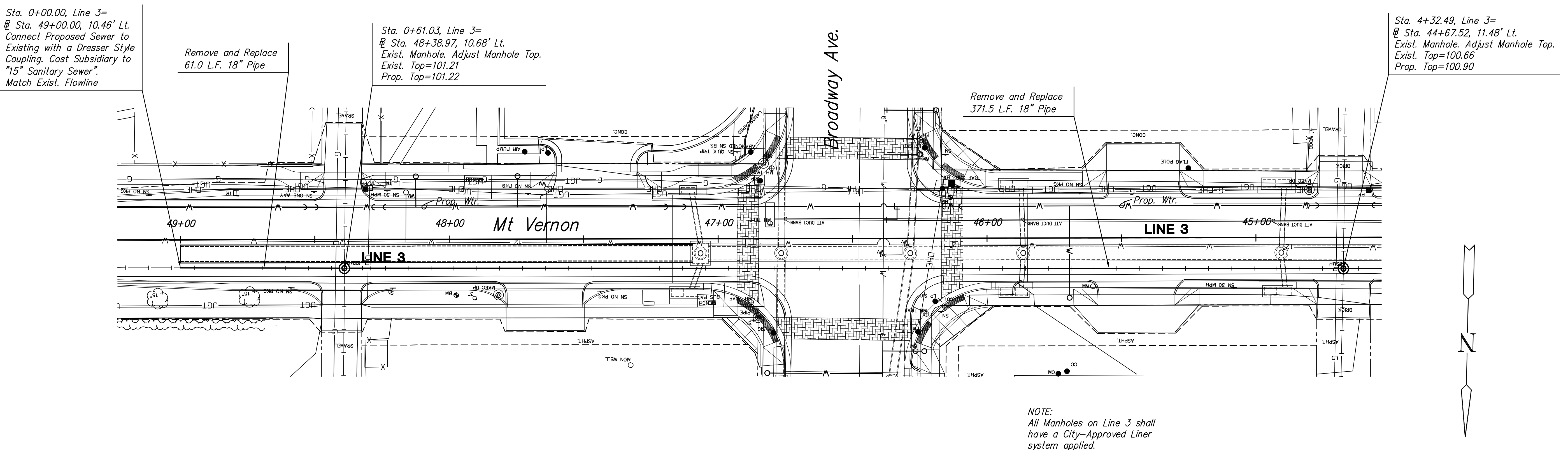
**MT VERNON STREET AND  
DRAINAGE IMPROVEMENTS  
FROM GREENWAY TO BROADWAY**

**Sanitary Sewer  
Line 3**  
SHEET TITLE 472-84289  
448-90385  
468-84514  
PROJECT NUMBER

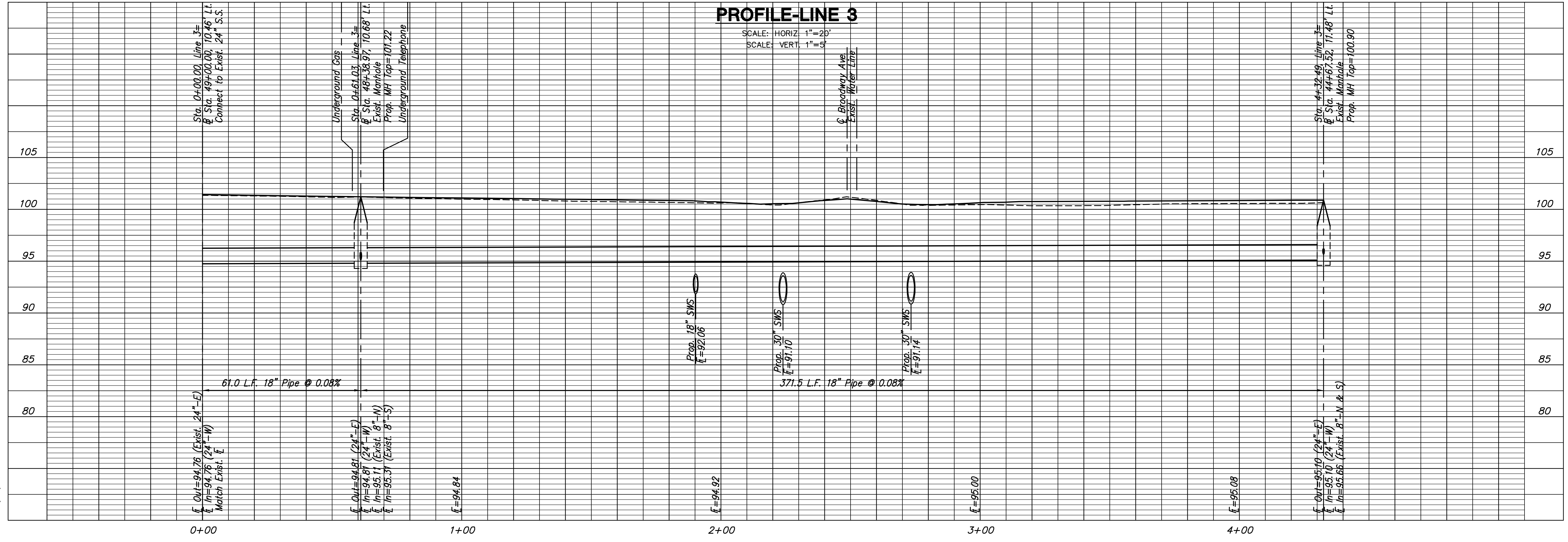
DESIGN BY JRA  
DRAWN BY JSB  
CHECKED BY JRA

ISSUED  
May 27, 2008  
REVISED

SHEET NO.  
**73 of 120**



**PLAN-LINE 3**



PLOTTED: Thursday, May 27, 2008 @ 04:37PM

J:\CIVIL\056220\DWG\PLAN\056220E03.DWG

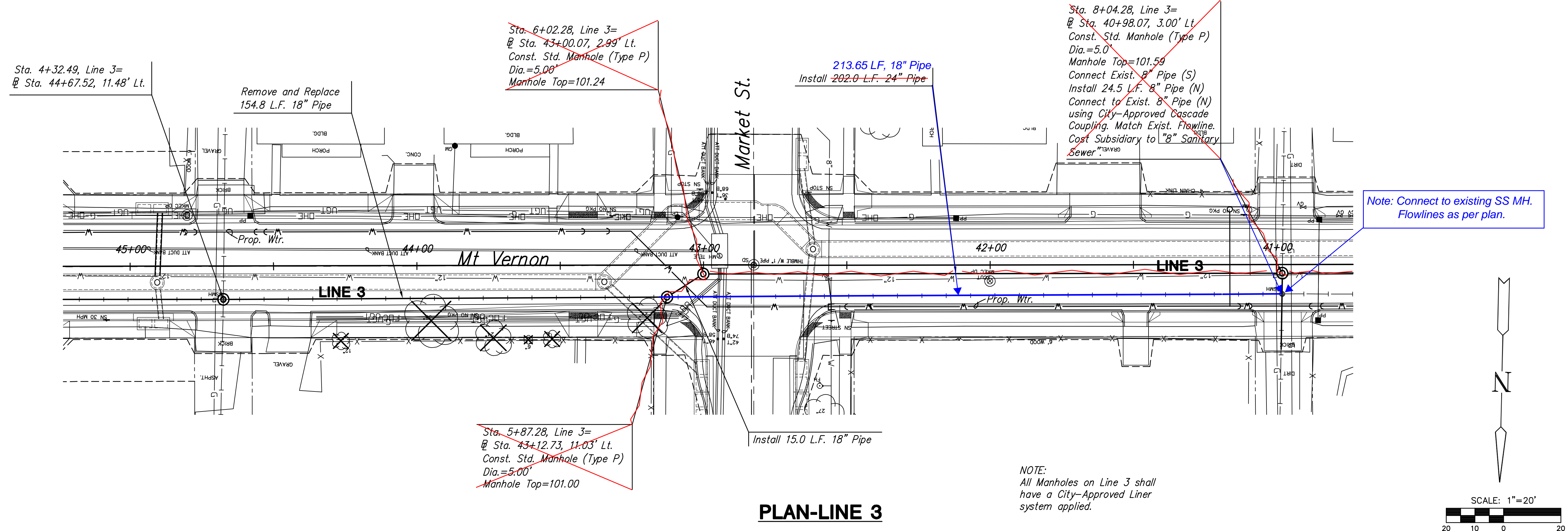
**MT VERNON STREET AND  
DRAINAGE IMPROVEMENTS  
FROM GREENWAY TO BROADWAY**

**Sanitary Sewer  
Line 3**  
SHEET TITLE 472-84289  
448-90385  
468-84514  
PROJECT NUMBER

DESIGN BY JRA  
DRAWN BY JSB  
CHECKED BY JRA

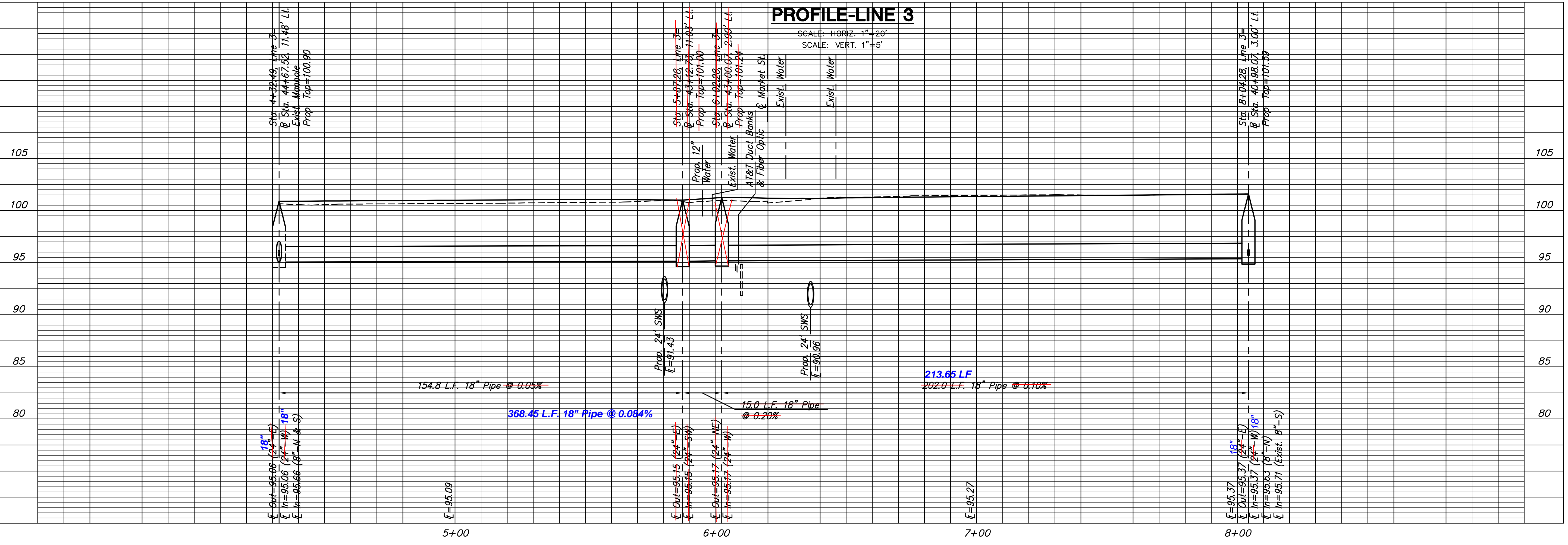
ISSUED  
May 27, 2008  
REVISED

SHEET NO.  
**74 of 120**



**PLAN-LINE 3**

NOTE:  
All Manholes on Line 3 shall  
have a City-Approved Liner  
system applied.



**PROFILE-LINE 3**

SCALE: HORIZ. 1"=20'  
SCALE: VERT. 1"=5'

PLOTTED: Thursday, May 27, 2008 @ 04:37PM

J:\CIVIL\05620\DWG\PLAN\05620P04.DWG

**MT VERNON STREET AND  
DRAINAGE IMPROVEMENTS  
FROM GREENWAY TO BROADWAY**

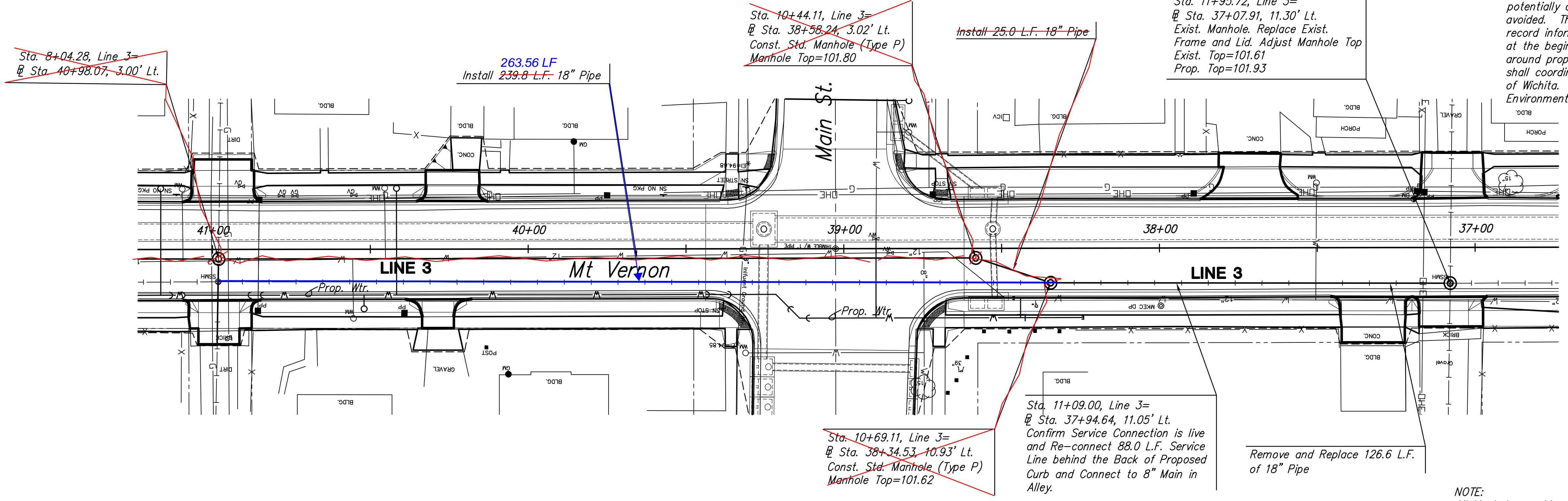
**Sanitary Sewer  
Line 3**  
SHEET TITLE 472-84289  
448-90385  
468-84514  
PROJECT NUMBER

DESIGN BY JRA  
DRAWN BY JSB  
CHECKED BY JRA

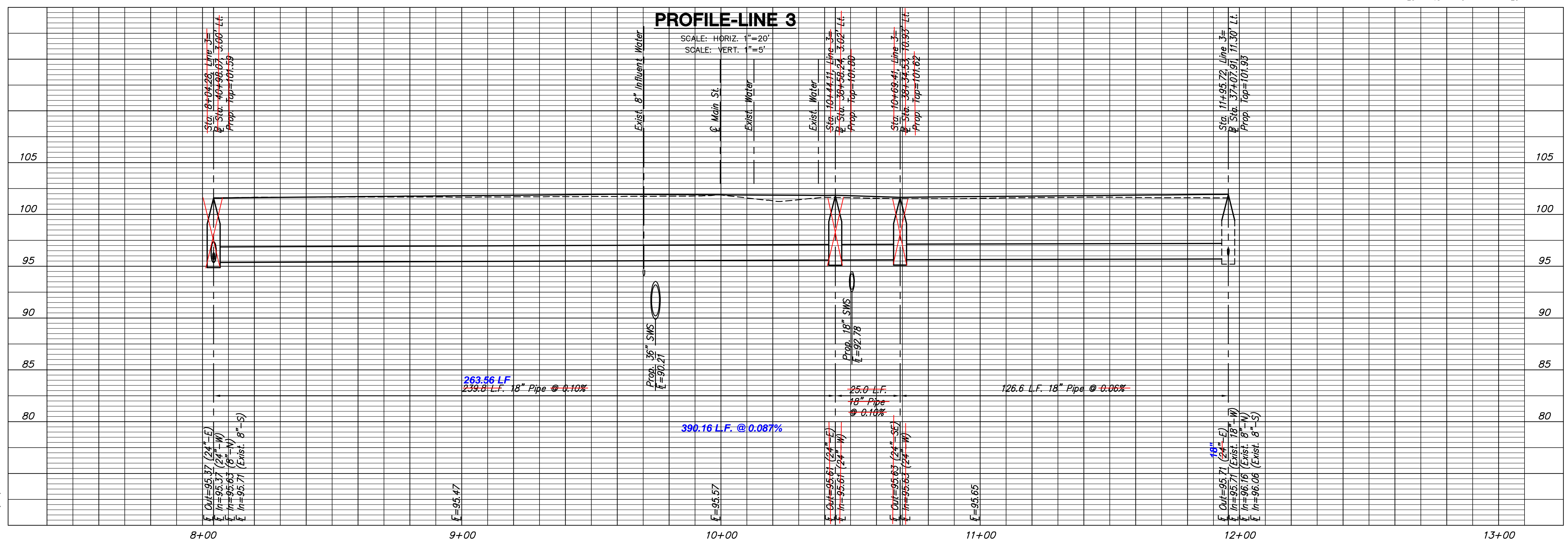
ISSUED  
May 27, 2008  
REVISED

SHEET NO.  
**75 of 120**

**NOTE:**  
The ground water influent line is a black-colored 8" SDR-11 HDPE pipe with green stripes associated with the City's Gilbert and Mosley project. This pipe contains ground water that is potentially contaminated and contact with the water should be avoided. The elevation of the pipe is based off of available record information and should be confirmed by the contractor at the beginning of construction. Relocation of the pipe around proposed utilities may be required. The contractor shall coordinate work with and around the pipe with the City of Wichita. Contact Doris Leslie with City of Wichita Environmental Services at 268-8359.



**PLAN-LINE 3**



**PROFILE-LINE 3**  
SCALE: HORIZ. 1"=20'  
SCALE: VERT. 1"=5'

PLOTTED: Thursday, May 27, 2008 @ 04:37PM

J:\CIVIL\05620\DWG\SSAN\05620D05.DWG