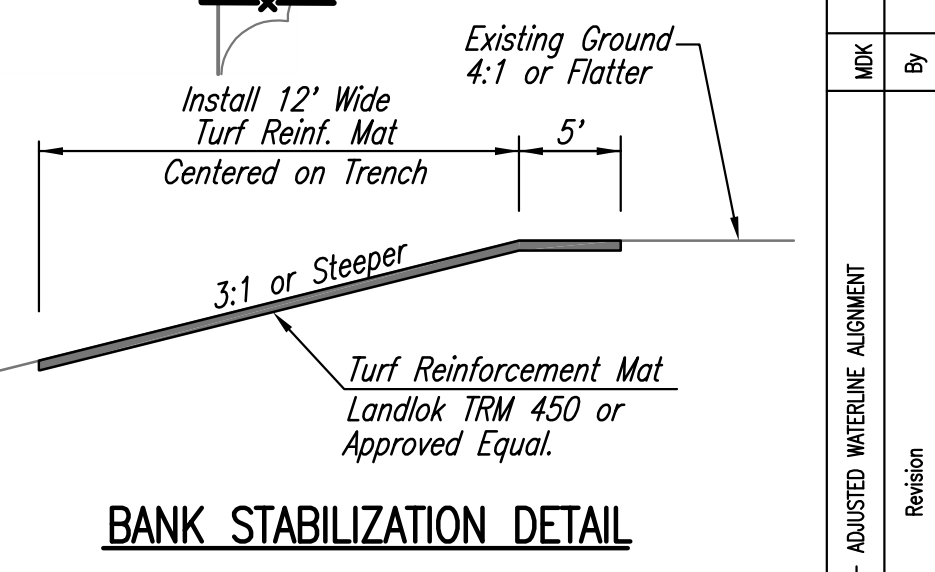
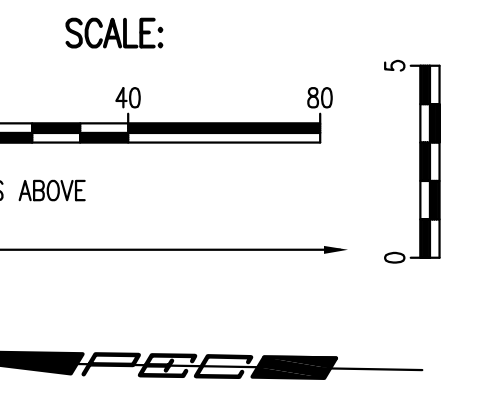
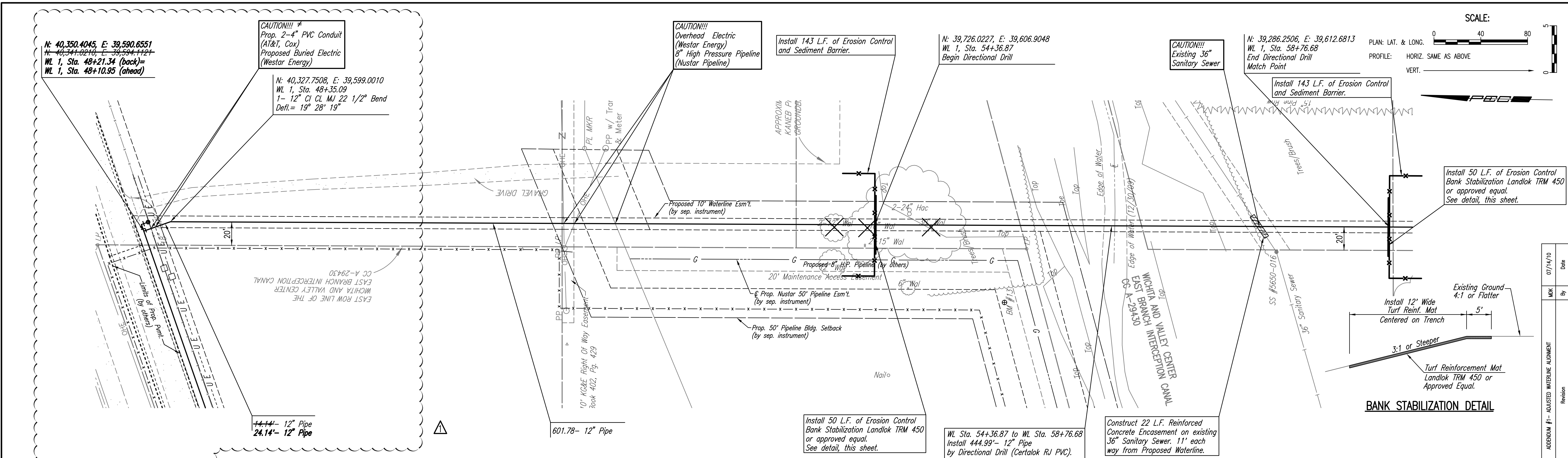


PLAN	CHECKED	BY	DATE
	CHECKED		

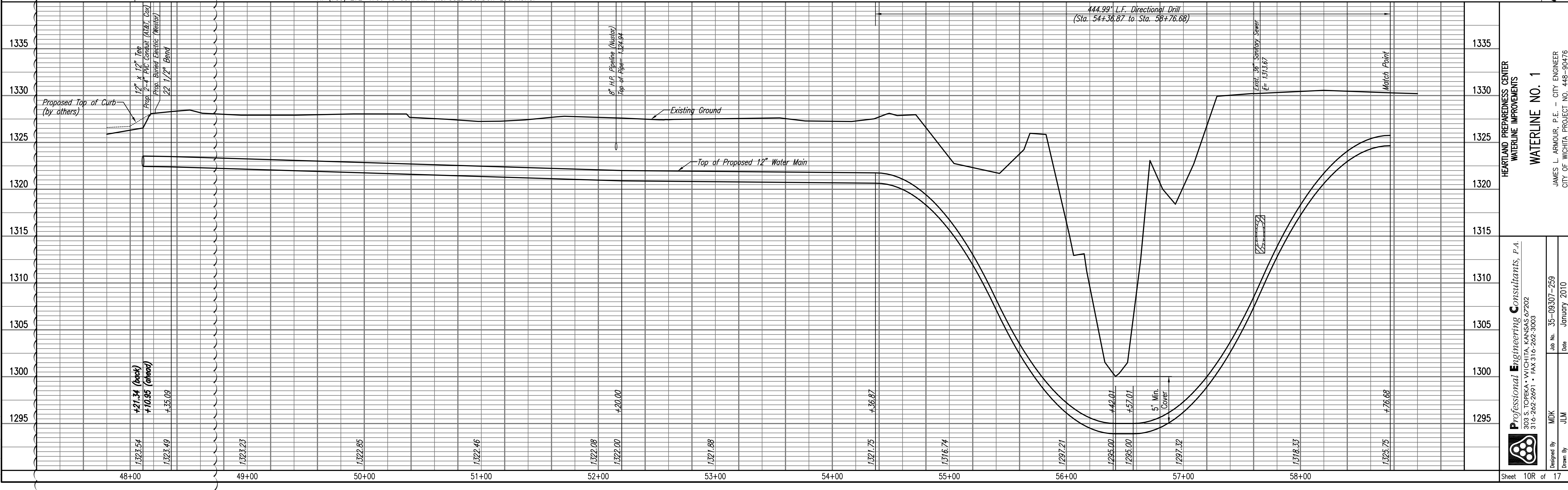
PROFILE	CHECKED	BY	DATE
	CHECKED		

Saved: 07-14-2010 2:39:11 PM by JLM
 Plot Scale: 1/40 07-14-2010 2:57:53 PM by JLM
 G:\2009\08307\000\WL_08307-C-WLPROJ_Adamia 1



≠ PRIOR TO BEGINNING CONSTRUCTION, THE CONTRACTOR SHALL CONTACT
 COOK, FLATT, STROBEL ENGINEERING, P.A. (TOPEKA OFFICE), MR. KEVIN BECK,
 AT (785) 272-4706 TO CONFIRM PROPOSED CONDUIT LOCATIONS.

WATERLINE NO. 1



No.	
Revision	
By	
Date	07/14/10
ADJUSTED WATERLINE ALIGNMENT	

HEARTLAND PREPAREDNESS CENTER
 WATERLINE IMPROVEMENTS
WATERLINE NO. 1

JAMES L. ARMOUR, P.E. - CITY ENGINEER
 CITY OF WICHITA PROJECT NO. 448-90476

Professional Engineering Consultants, P.A.
 803 S. TOPEKA AVENUE, SUITE 100, WICHITA, KANSAS 67202
 316.262.2691 • FAX 316.262.3003

Job No. 35-09307-259
 Date January 2010

Designed By: JLM
 Drawn By: JLM

Sheet 10R of 17