

PLAN	CHECKED	DATE
	CHECKED	

PROFILE	CHECKED	DATE
	CHECKED	

Saved: 06-29-2010 2:36:46 PM by JLM
 Plot Scale: 1/40 07-01-2010 11:20:44 AM by JLM
 C:\2009\08307\000\WL\08307-C-WLPR08

N: 38,588.2432, E: 39,621.8497
 WL 1, Sta. 65+74.75

CAUTION!!!
 Overhead Electric
 (Westar Energy)

N: 38,596.1054, E: 39,966.4694
 WL 1, Sta. 69+19.46
 1- 12" CI CL MJ 22 1/2° Bend
 Defl. = 19° 00' 00"

CAUTION!!!
 Existing 8"
 Sanitary Sewer

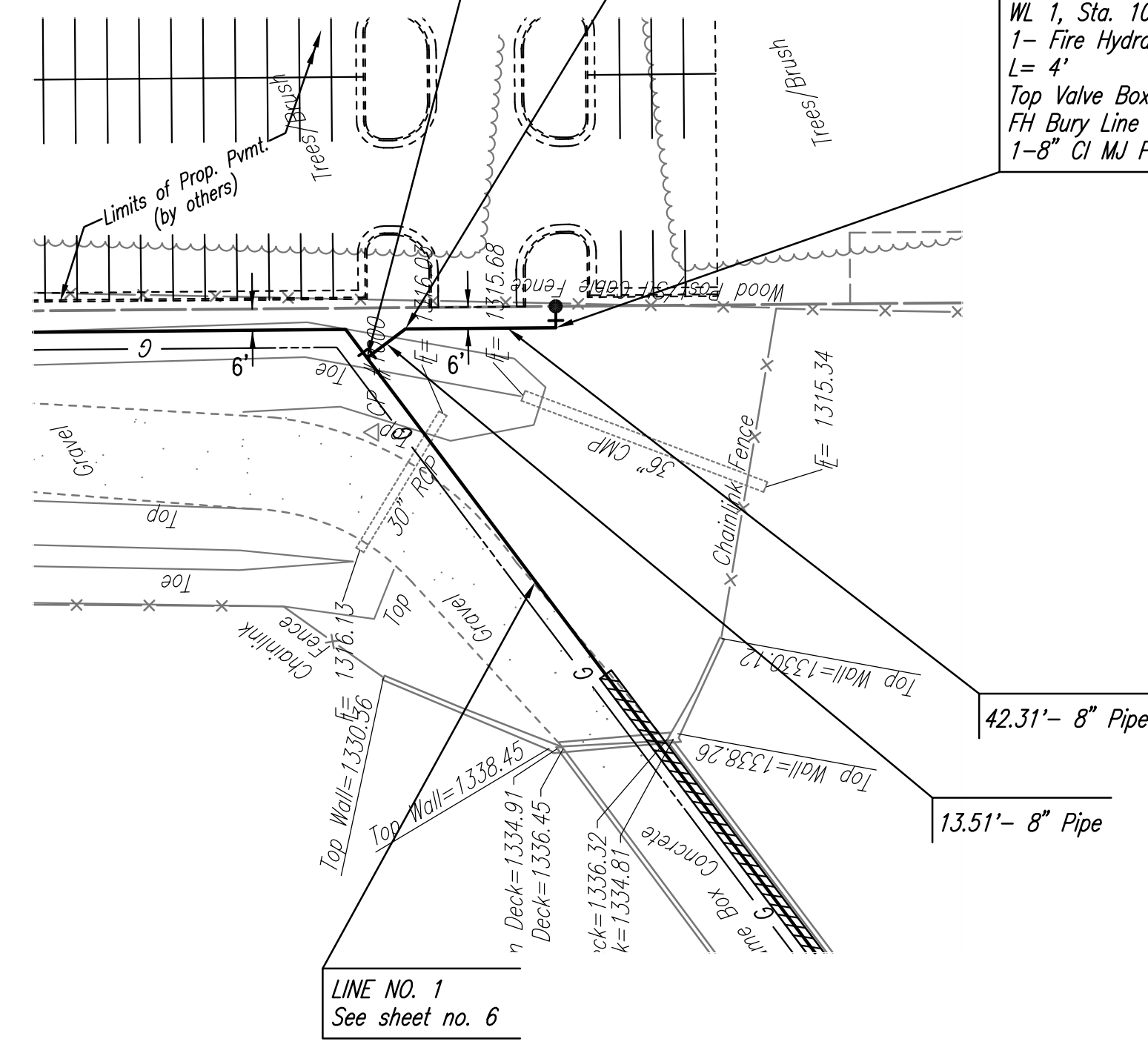
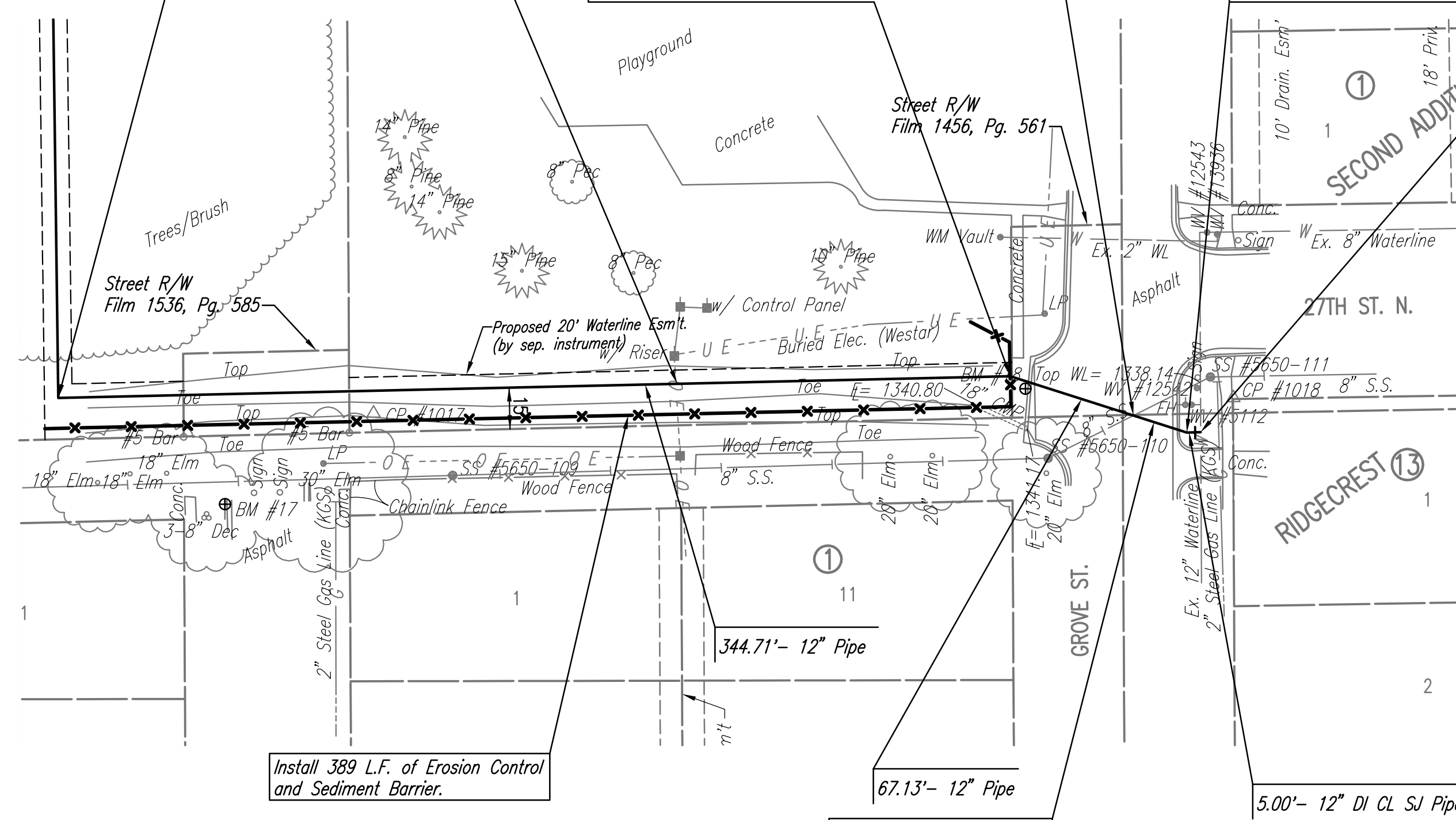
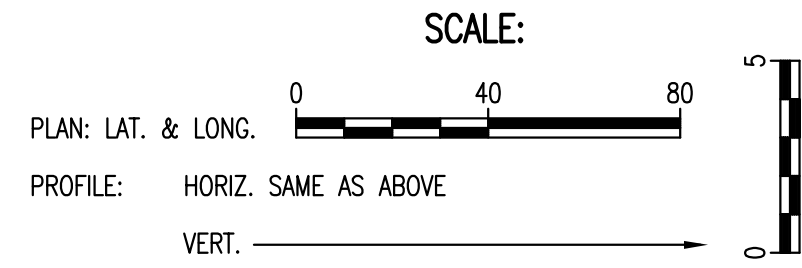
N: 38,575.7038, E: 40,030.4228
 WL 1, Sta. 69+86.59
 1- 12" CI CL MJ 22 1/2° Bend
 Defl. = 19° 00' 00"

N: 38,575.8178, E: 40,035.4215
 WL 1, Sta. 69+91.59
 Existing 12" Water Main *
 1- 12" x 12" Tapping Sleeve
 1- 12" Tapping Valve
 1- 6" Valve Box
 (To be furnished and set by
 City of Wichita Water Dept.)
 Top Valve Box EL = 1342.8

N: 38,717.8363, E: 37,681.3665
 WL 2, Sta. 10+00.00=
 WL 1, Sta. 20+31.45

N: 38,707.0421, E: 37,689.4979
 WL 2, Sta. 10+13.51
 1- 8" CI CL MJ 22 1/2° Bend
 1- 8" CI CL PE x MJ 11 1/4° Bend
 Defl. = 36° 30' 00"

N: 38,664.7332, E: 37,689.8605
 WL 1, Sta. 10+55.82
 1- Fire Hydrant Assembly
 L = 4'
 Top Valve Box EL = 1318.6
 FH Bury Line EL = 1318.6
 1- 8" CI MJ Plug (S)

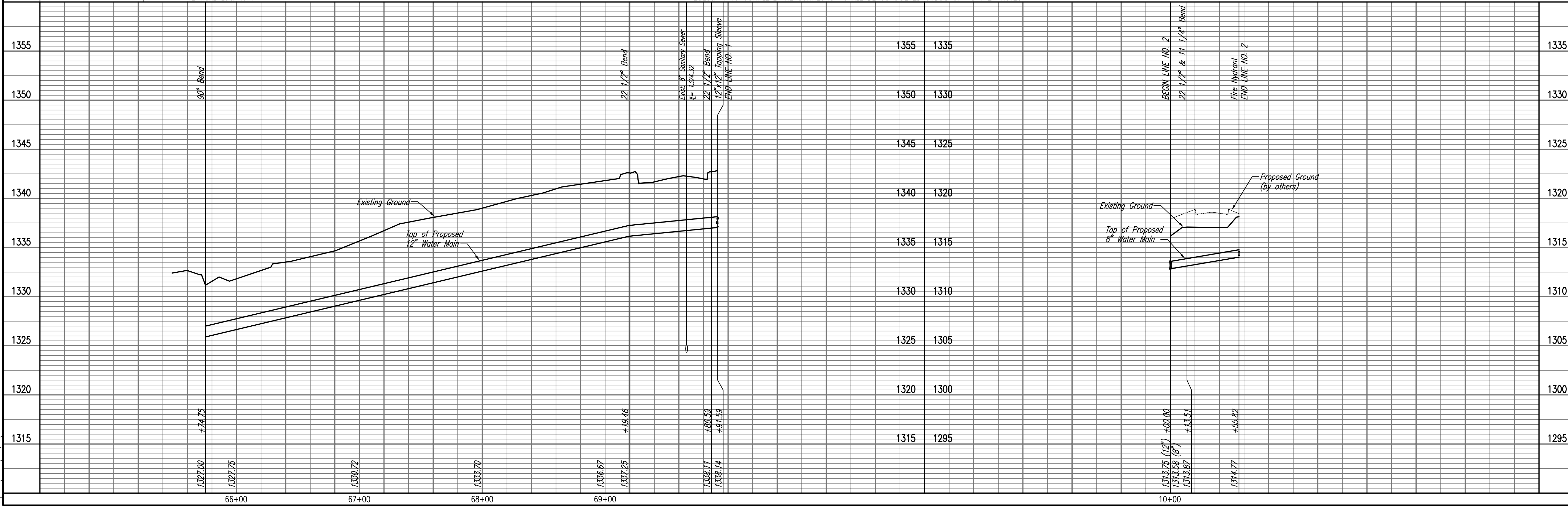


≠ EXISTING UTILITIES AND THEIR LOCATIONS, AS SHOWN ON THE PLANS, REPRESENT THE BEST INFORMATION OBTAINABLE FOR THE DESIGN. PRIOR TO BEGINNING CONSTRUCTION, THE CONTRACTOR SHALL EXPOSE ALL UTILITIES CROSSED WITH THE PROPOSED WATERLINE TO VERIFY PIPE SIZE, TYPE, AND HORIZONTAL AND VERTICAL LOCATION.

WATERLINE NO. 1

* PRIOR TO BEGINNING CONSTRUCTION, THE CONTRACTOR SHALL EXCAVATE THE EXISTING 12" WATERLINE AT STATION 69+91.59 TO VERIFY PIPE SIZE, TYPE, FITTINGS, AND HORIZONTAL AND VERTICAL LOCATION. THE CONTRACTOR SHALL REPORT HIS FINDINGS TO THE ENGINEER SO THAT ANY NECESSARY PLAN MODIFICATIONS MAY BE MADE. ANY ADDITIONAL LABOR OR MATERIALS NECESSARY TO COMPLETE THE CONNECTION SHALL BE CONSIDERED SUBSIDIARY TO THE PROJECT.

WATERLINE NO. 2



HEARTLAND PREPAREDNESS CENTER
 WATERLINE IMPROVEMENTS
WATERLINE NO. 1 & 2
 JAMES L. ARMOUR, P.E. - CITY ENGINEER
 CITY OF WICHITA PROJECT NO. 448-90476

Professional Engineering Consultants, P.A.
 803 S. TOPICKA AVENUE, WICHITA, KANSAS 67202
 316-262-2691 • FAX 316-262-3003

Job No. 35-09307-259
 Date January 2010

Designed By MDK
 Drawn By JLM

Sheet 12 of 17