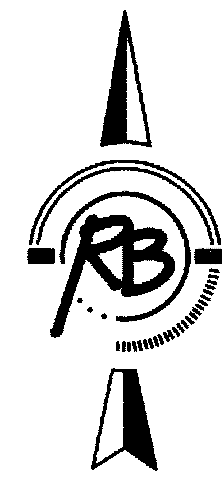


# HEARTLAND PREPAREDNESS CENTER

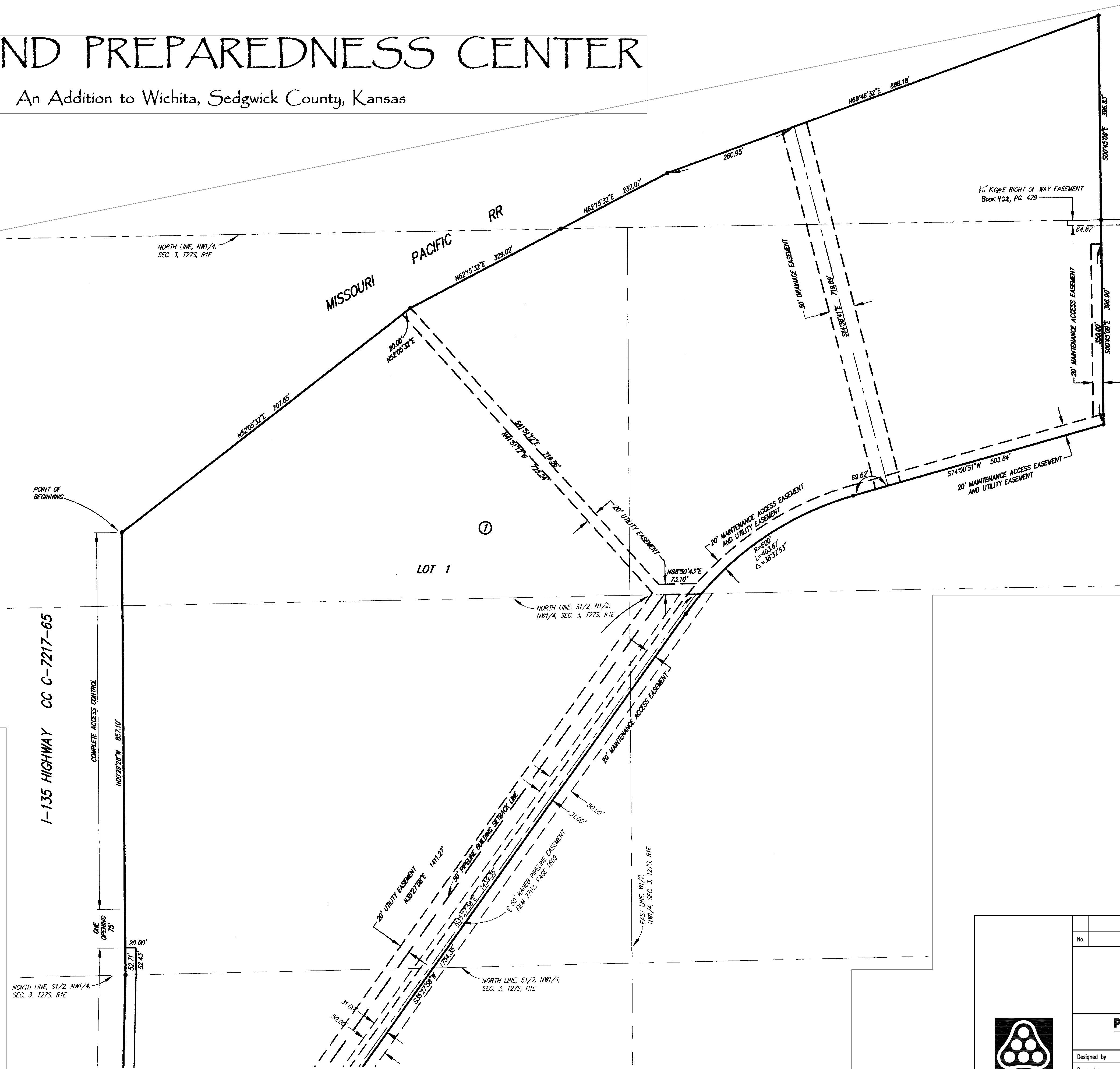
An Addition to Wichita, Sedgwick County, Kansas



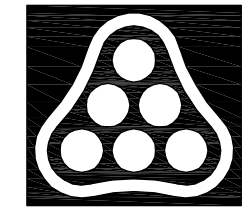
1" = 100'

**SURVEY MARKER LEGEND**

- 3/4" IP = 3/4" IRON PIPE (FOUND)
- PEC = 3/4" IRON PIPE W/PEC CAP (FOUND)
- 1" IP = 1" IRON PIPE (FOUND)
- CROSS = CHISELED CROSS IN STONE (FOUND)
- THIMBLE = 3/4" IRON PIPE IN THIMBLE (FOUND)
- MAG = MAG NAIL (SET)
- = 5/8" REBAR W/R&B CAP (SET)



No.	Revision	By	Date
HEARTLAND PREPAREDNESS CENTER SINGLE 8' X 8' REINFORCED CONCRETE BOX <b>PLAT</b> JAMES L. ARMOUR, P.E. - CITY ENGINEER CITY OF WICHITA PROJ. NO. 472-84890 <b>Professional Engineering Consultants, P.A.</b> 303 S. TOPEKA • WICHITA, KANSAS 67202 316-262-2691 • FAX 316-262-3003			
Designed by	BMM	Job No.	35-09307
Drawn by	BJS	Date	December 2009



Saved: 06-30-2010 5:13:59 PM by BJS  
 Plot Scale: 1:100 07-01-2010 6:53:35 AM by BILL J. SEWON