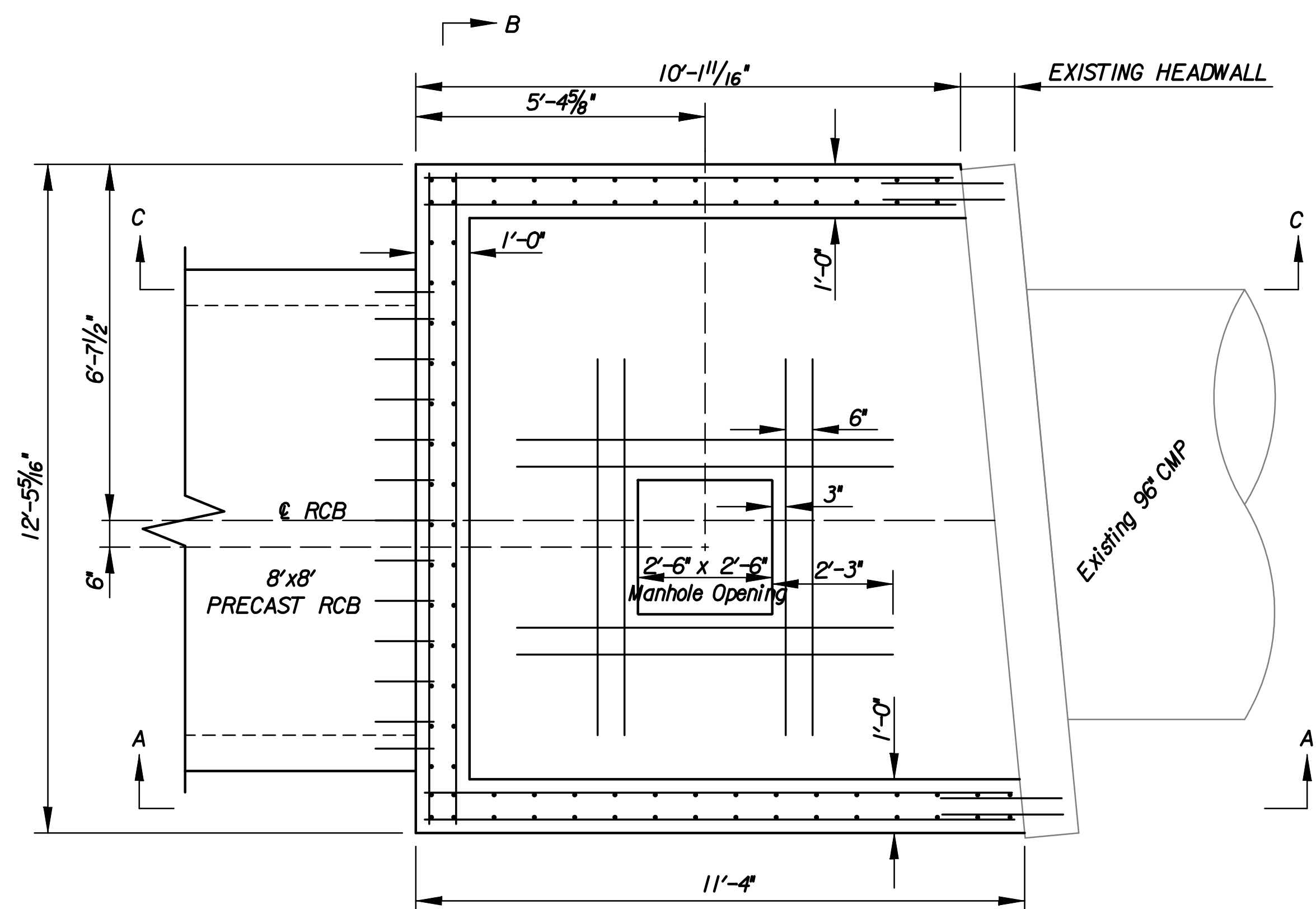
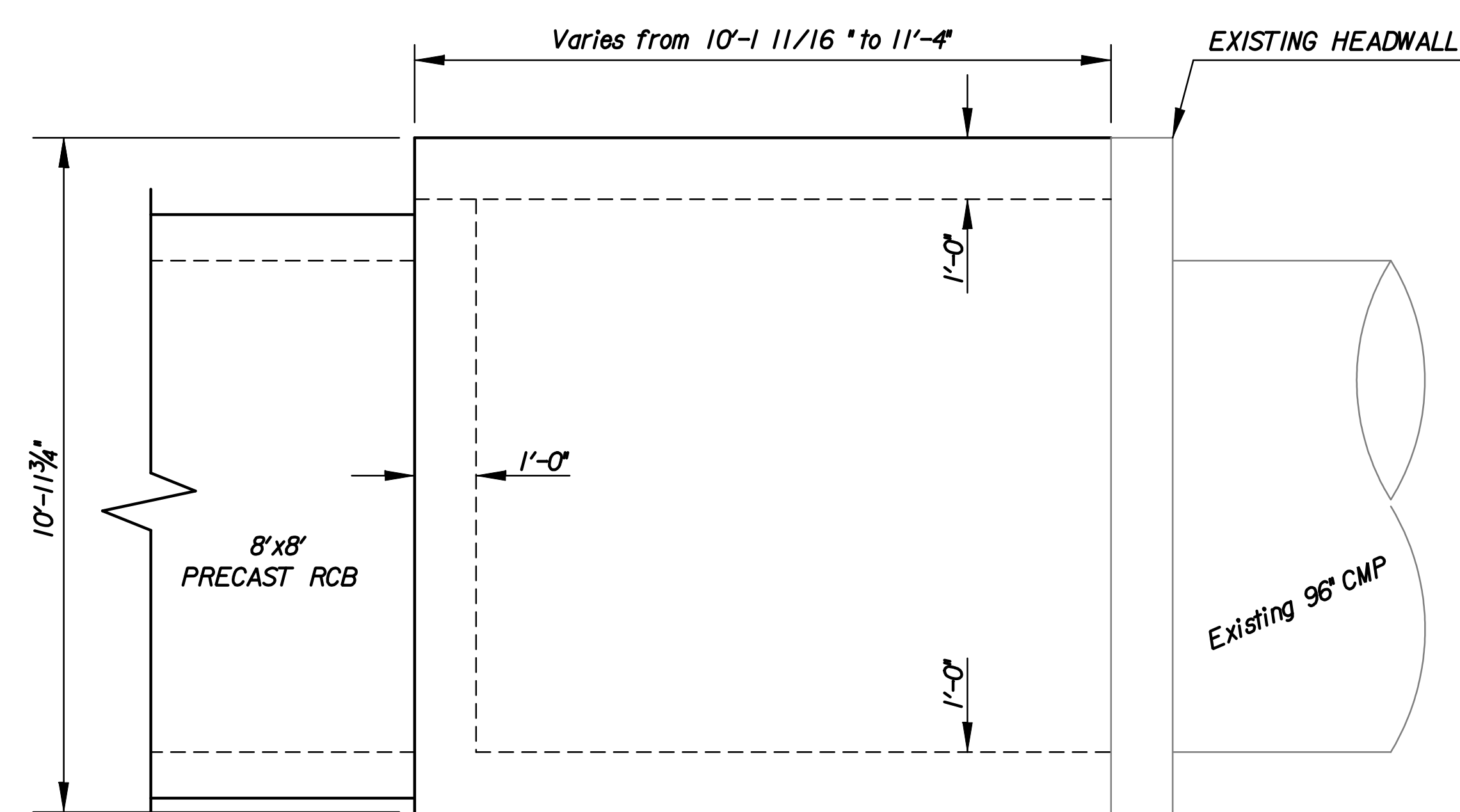


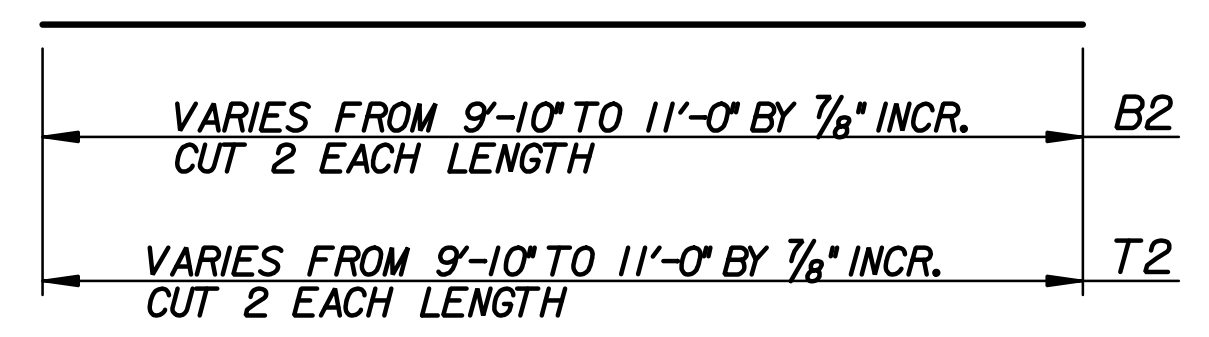
Plotted By : rjm
 File : i:\2009\09307\09307-000-Manhole Details 2.dgn



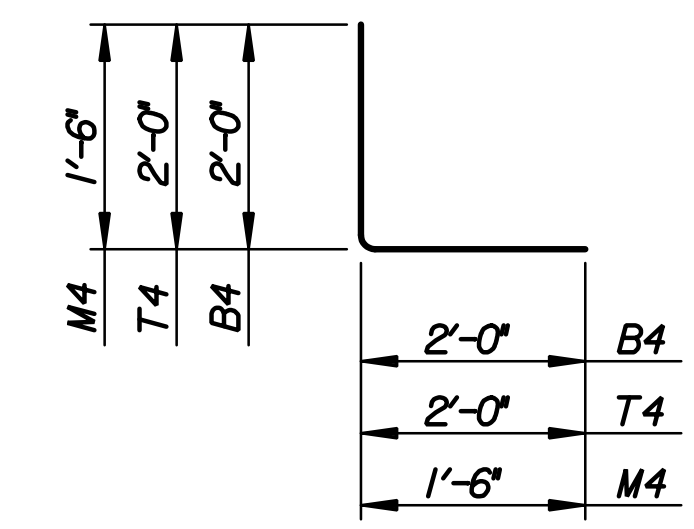
PLAN
 Additional reinforcing at opening shown for clarity.
 Offset Manhole Opening 6" from RCB C.L.



ELEVATION



B2, T2



B4, T4, M4

BENDING DIAGM
 ALL DIMENSIONS ARE OUT TO OUT OF BAR.

REINFORCING STEEL							
STRAIGHT BARS				BENT BARS			
MARK	NO.	SIZE	LENGTH	MARK	NO.	SIZE	LENGTH
B1	32	#7	12'-1"	B4	32	#5	4'-0"
B2	34	#7	VARIES	T4	32	#5	4'-0"
B3	34	#6	2'-3"				
B5	13	#5	2'-3"	M4	33	#5	3'-0"
T1	32	#7	12'-1"				
T2	34	#7	VARIES				
T3	34	#6	2'-3"				
M1	56	#5	10'-8"				
M2	24	#5	11'-0"				
M3	48	#5	2'-3"				
M5	22	#5	2'-3"				
M6	11	#5	1'-6"				
M7	4	#5	12'-1"				
M8	22	#5	1'-8"				
M9	14	#5	10'-8"				
M10	24	#5	9'-9"				
X1	16	#5	7'-0"				
SUMMARY OF QUANTITIES **							
CONCRETE (GRADE 4.0) (AE)						18.4 C.Y.	
REINFORCING STEEL (GR. 60)						5,587 Lbs.	
DRILLING AND GROUTING						114 Ea.	

** FOR INFORMATION ONLY

NOTE: The Transition Manhole shall be included in the Lump Sum bid item "MH, Reinforced Concrete (Transition)" which shall include all reinforcing steel, concrete, foundation stabilization and any other incidentals required for construction. Quantities are shown for information only.

No.	Revision	By	Date
HEARTLAND PREPAREDNESS CENTER SINGLE 8' X 8' REINFORCED CONCRETE BOX TRANSITION MANHOLE DETAILS JAMES L. ARMOUR, P.E. - CITY ENGINEER CITY OF WICHITA PROJ. NO. 472-84830			
Professional Engineering Consultants, P.A. 303 S. TOPEKA • WICHITA, KANSAS 67202 316-262-2691 • FAX 316-262-3003			
Designed by	RJM	Job No.	35-09307
Drawn by	WLL	Date	December 2009
			Sheet 13 of 29