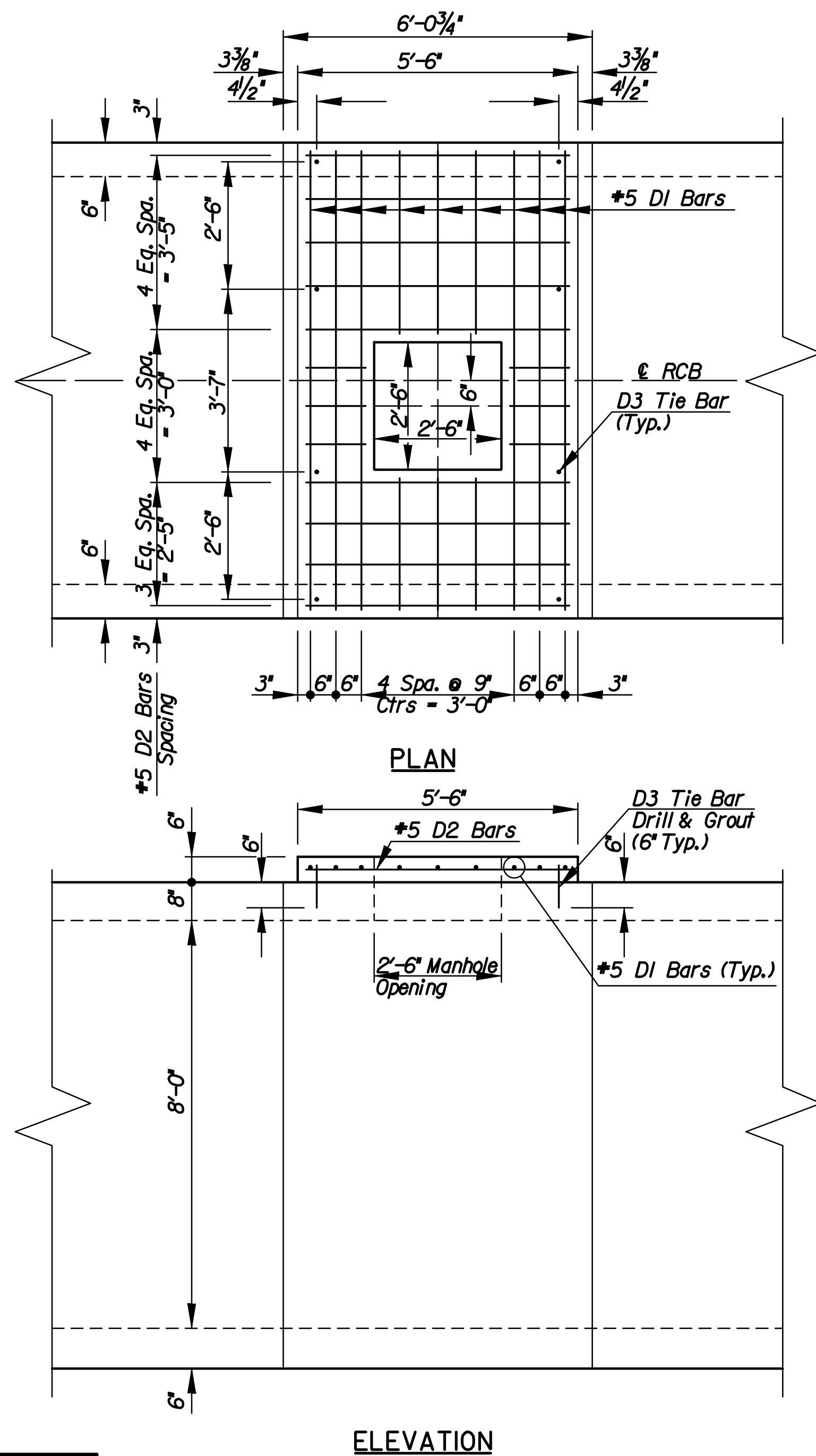
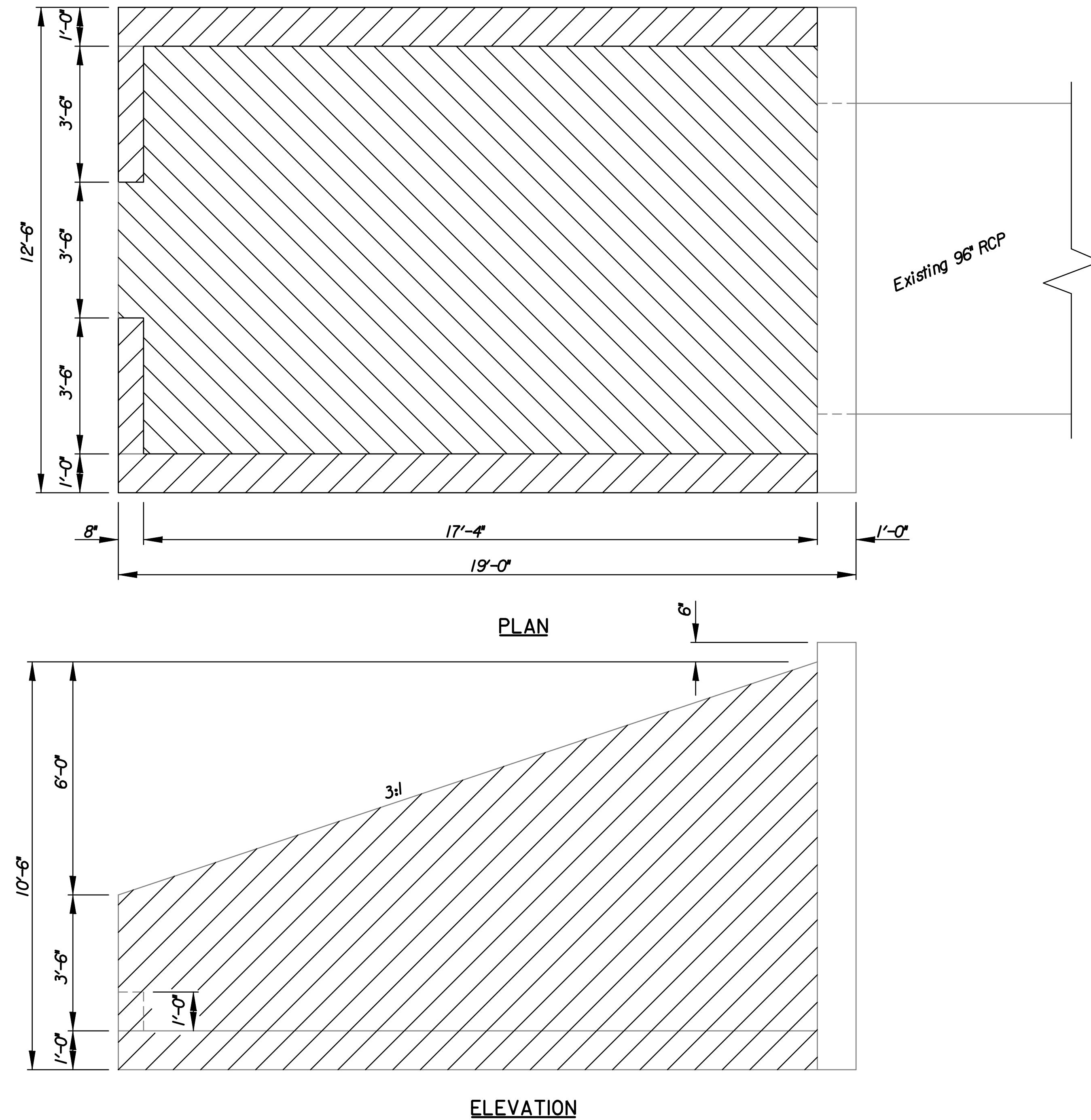


DISTRIBUTION SLAB DETAILS



REMOVAL DETAILS



REINFORCING SCHEDULE
(ONE DISTRIBUTION SLAB)

REINFORCING STEEL			
Mark	No.	Size	Length
D1	9	5	8'-8"
D2	13	5	5'-2"
D3	8	4	10"

NOTE: A distribution slab is required at each of the manhole opening locations in the precast RCB.
Offset the 30"x30" opening 6" from the RCB ϵ .

*SUMMARY OF QUANTITIES (PER EACH)

Item	Quantity	Unit
Reinforcing Steel (Grade 60)	115	Lbs.
Concrete	0.92	C.Y.
Drilling and Grouting	8	Each

* For Information Only (Total) (3 Req.)

NOTE: Distribution Slabs shall be included in the Linear Foot bid item "Pipe, RCB (8'x8") (Precast)". Quantities are shown for information only.

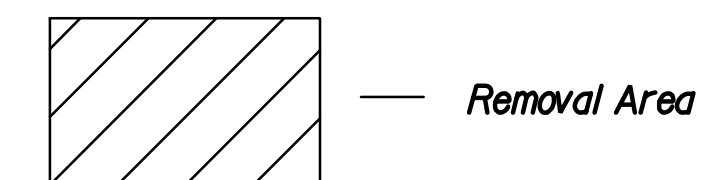
NOTE: Remove all of the Wings, Floor and end walls as depicted on this sheet. The headwall of the existing structure is to remain. Existing horizontal steel is to remain and any damaged or unusable steel protruding from the headwall shall be replaced by drilling and grouting a tie bar, a minimum of 9" into the existing headwall.

*SUMMARY OF QUANTITIES

Item	Quantity	Unit
Removal of Existing Structure	17.2	C.Y.

*For Information Only (Total)

NOTE: Removal of Existing Structure shall be included in the Lump Sum bid item "MH, Reinforced Concrete (Transition)". Quantities are shown for information only.



No.	Revision	By	Date
HEARTLAND PREPAREDNESS CENTER SINGLE 8' X 8' REINFORCED CONCRETE BOX MISCELLANEOUS DETAILS JAMES L. ARMOUR, P.E. - CITY ENGINEER CITY OF WICHITA PROJ. NO. 472-84830 Professional Engineering Consultants, P.A. 303 S. TOPEKA • WICHITA, KANSAS 67202 316-262-2691 • FAX 316-262-3003			
Designed by	RJM	Job No.	35-09307
Drawn by	RJM	Date	December 2009

Sheet 14 of 29