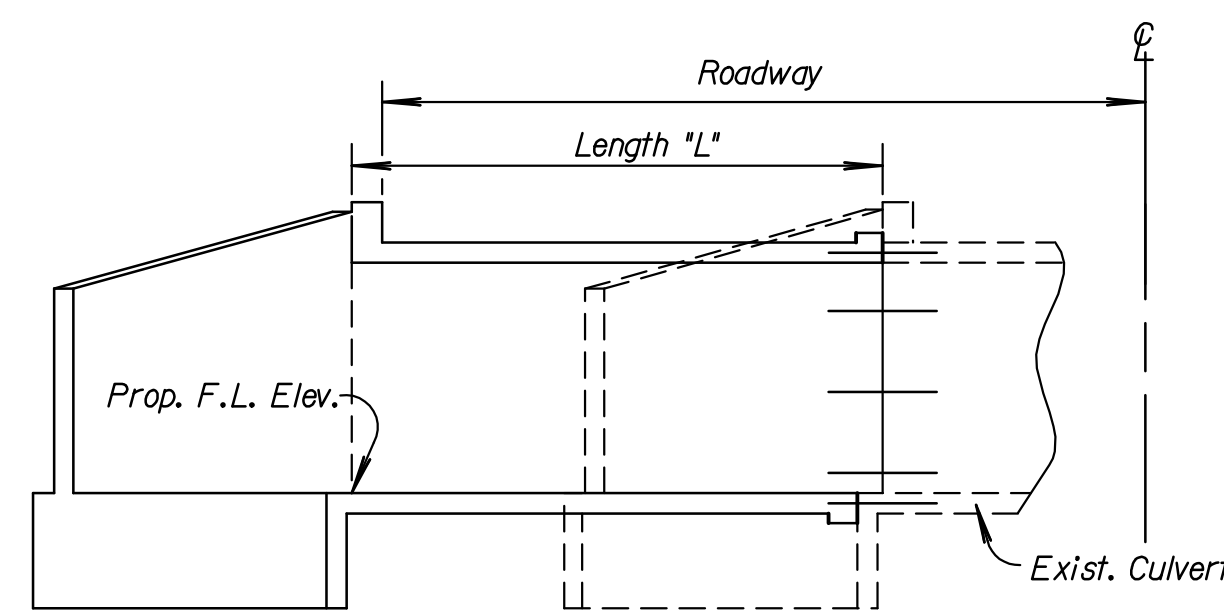
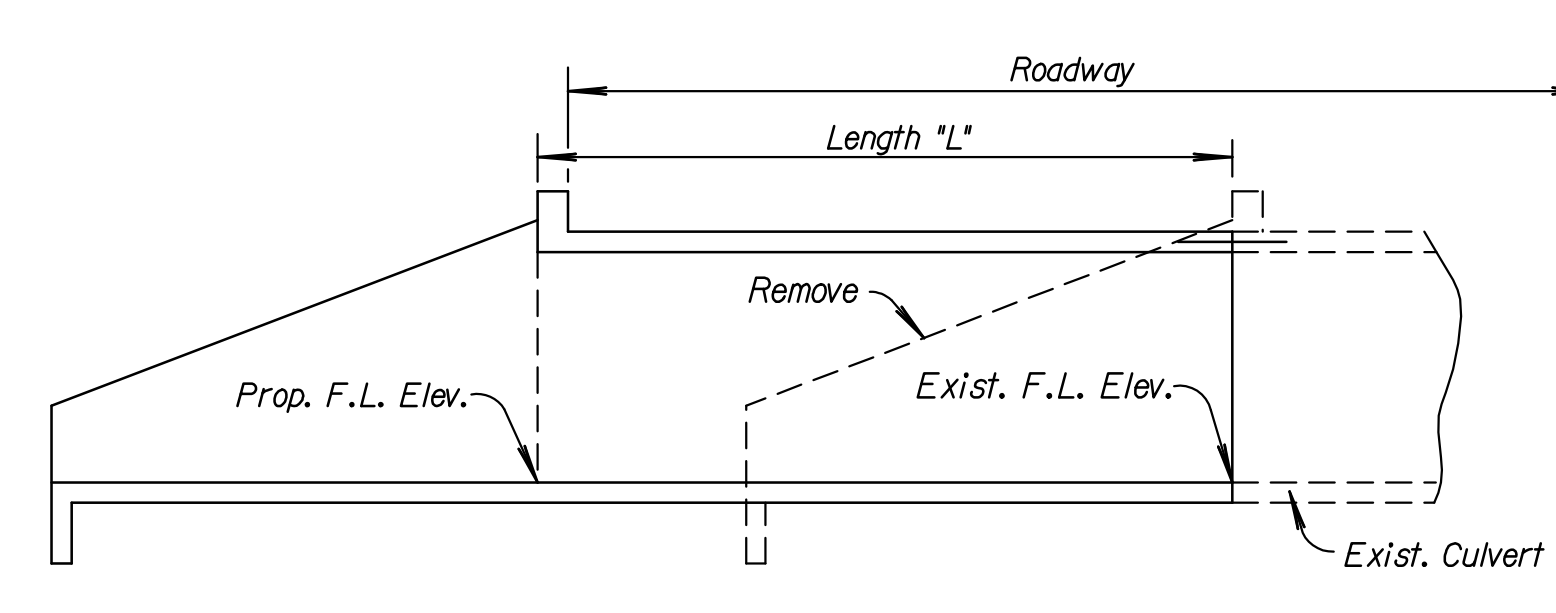


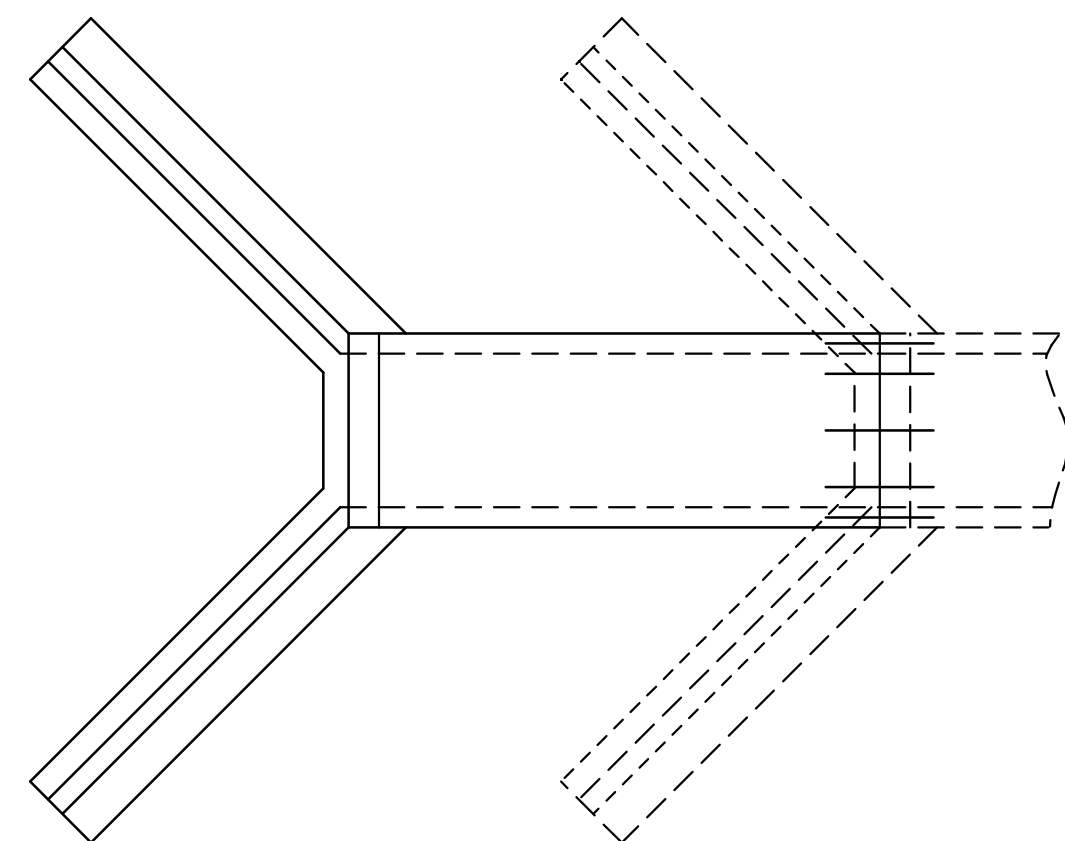
TYPICAL SECTION
(Flared Wings)



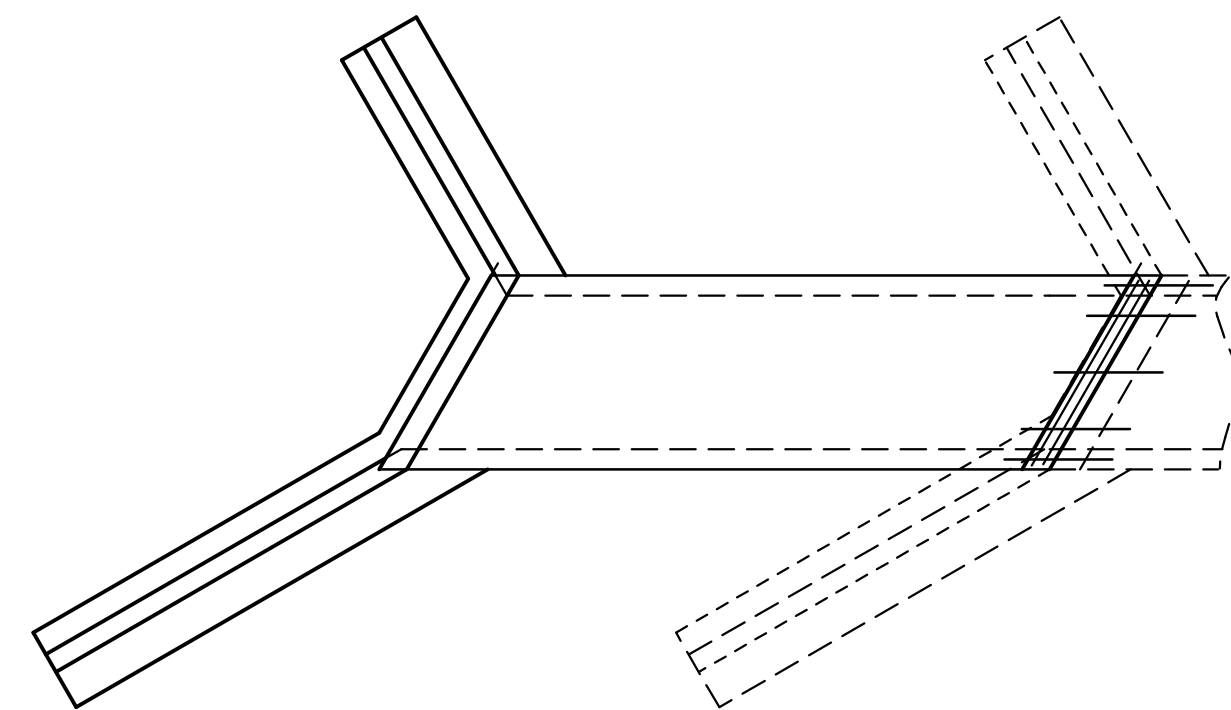
TYPICAL SECTION
(Skewed Structure)



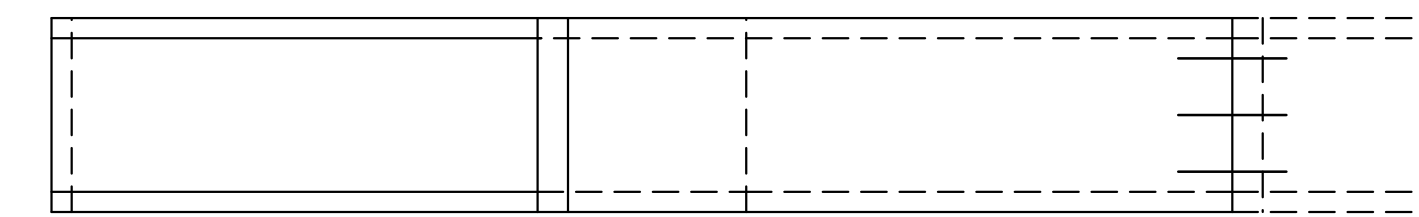
TYPICAL SECTION
(Straight Wings)



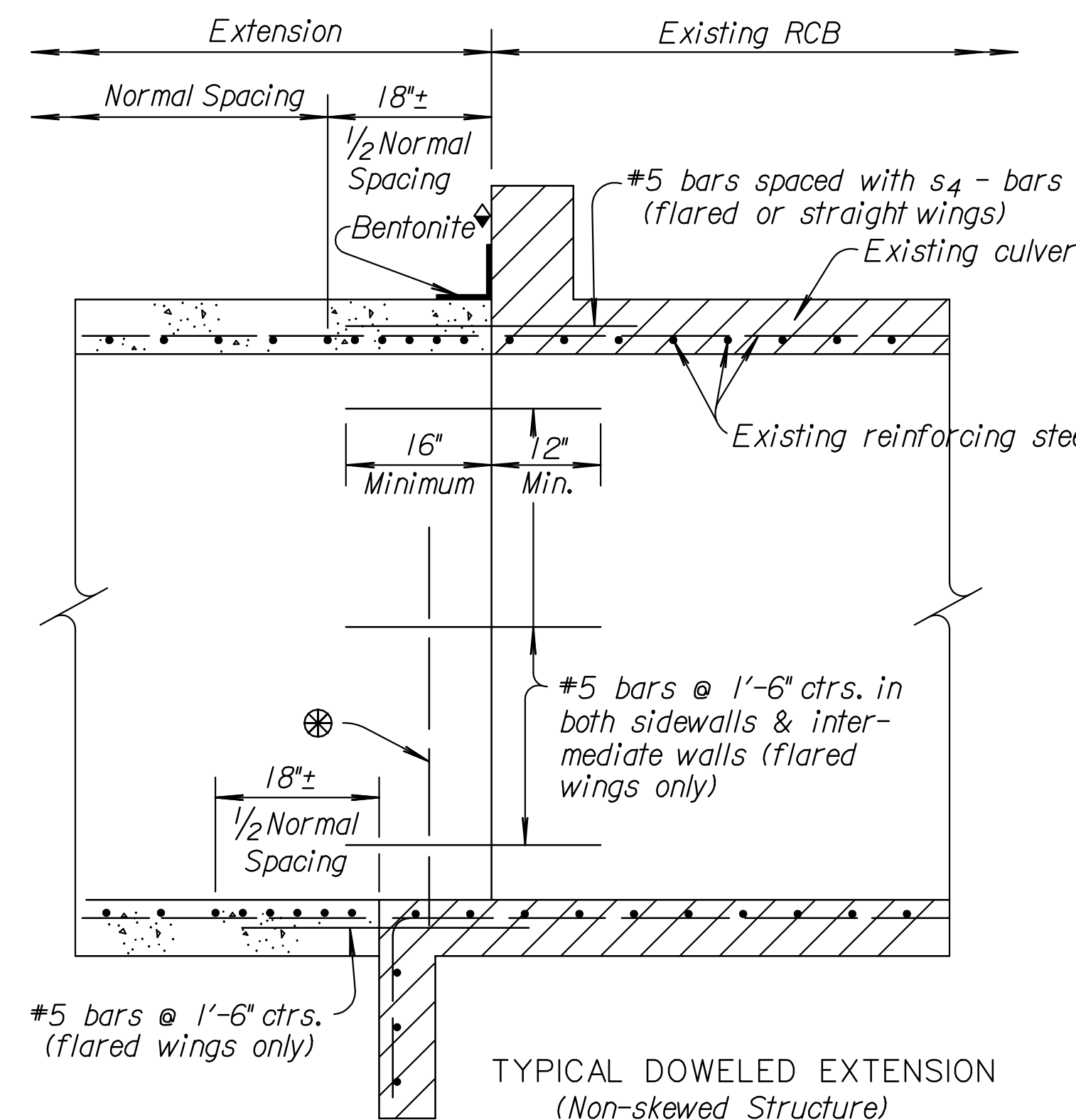
TYPICAL PLAN
(Flared Wings)



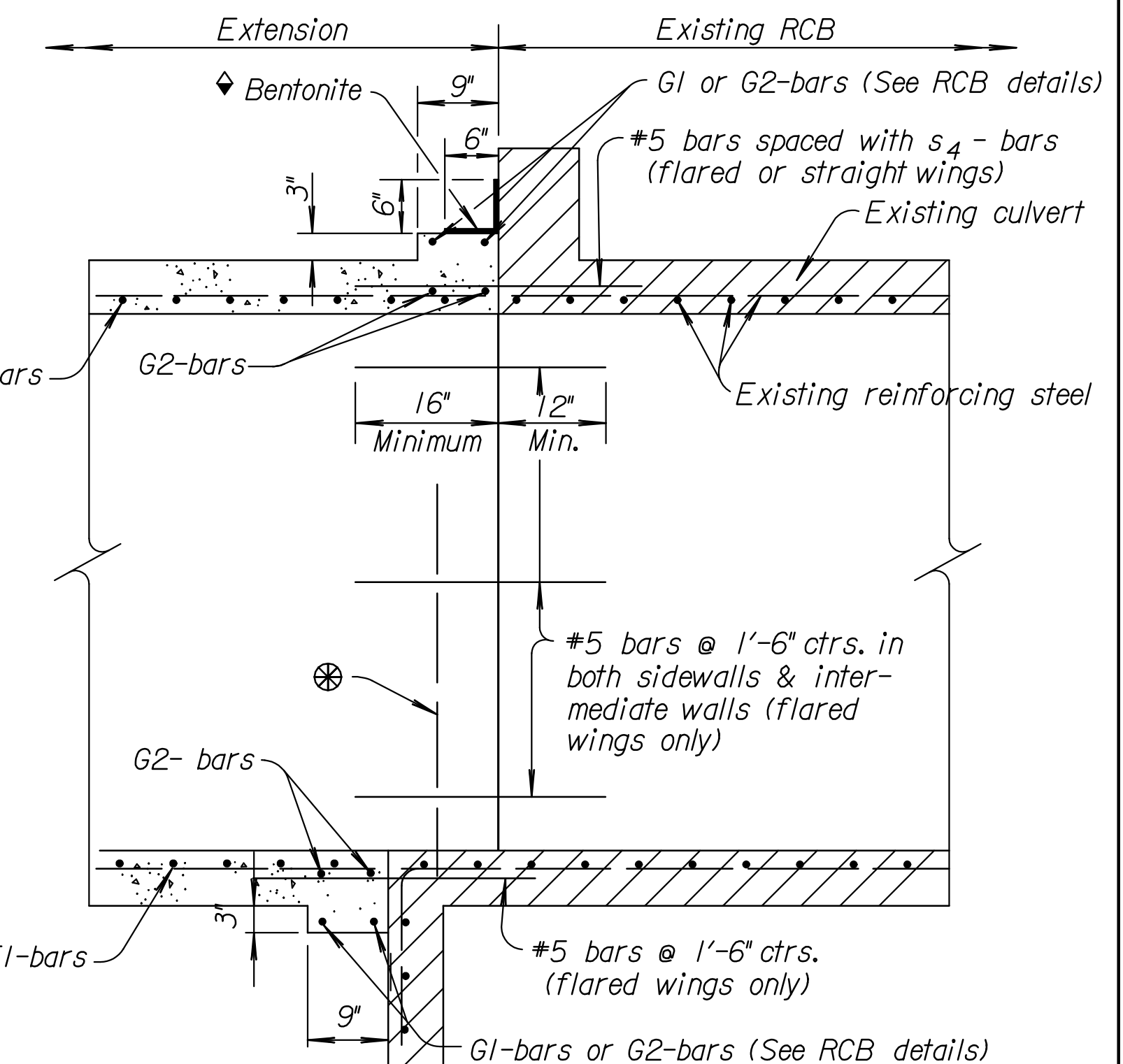
TYPICAL PLAN
(Skewed Structure)



TYPICAL PLAN
(Straight Wings)



TYPICAL DOVELED EXTENSION
(Non-skewed Structure)



TYPICAL DOVELED EXTENSION
(Skewed Structure)

NOTE: The joint between the RCB extension and the existing structure shall be protected by a bentonite based system as shown when the following conditions exist:
 1. Fill depth over the joint is 2 feet or less.
 2. Lateral location of the joint is 20 feet or less from edge of pavement.
 3. RCB span is equal to or greater than 8 feet.
 The bentonite shall be placed on the exterior walls and top slab and shall conform with the requirements of the Special Provision for "Bridge Backwall Protection System". All materials and labor required for this work shall be Subsidiary to the bid item "Grade 4.0 Concrete".

If the existing footings are left in place, dowel any vertical reinforcing steel located in the new walls into the existing footing. For rigid frame boxes, this may require additional #5 dowel bars to splice to the exterior vertical bars in the wall.

Quantities on this sheet are included in Summary of Quantities, Sh. No.

Station	Size Exist. R.C.B.	Roadway		Length "L"		Grade 4.0 Conc. Cu. Yds.	Reinf. Steel Lbs.	Remarks
		Lt.	Rt.	Lt.	Rt.			

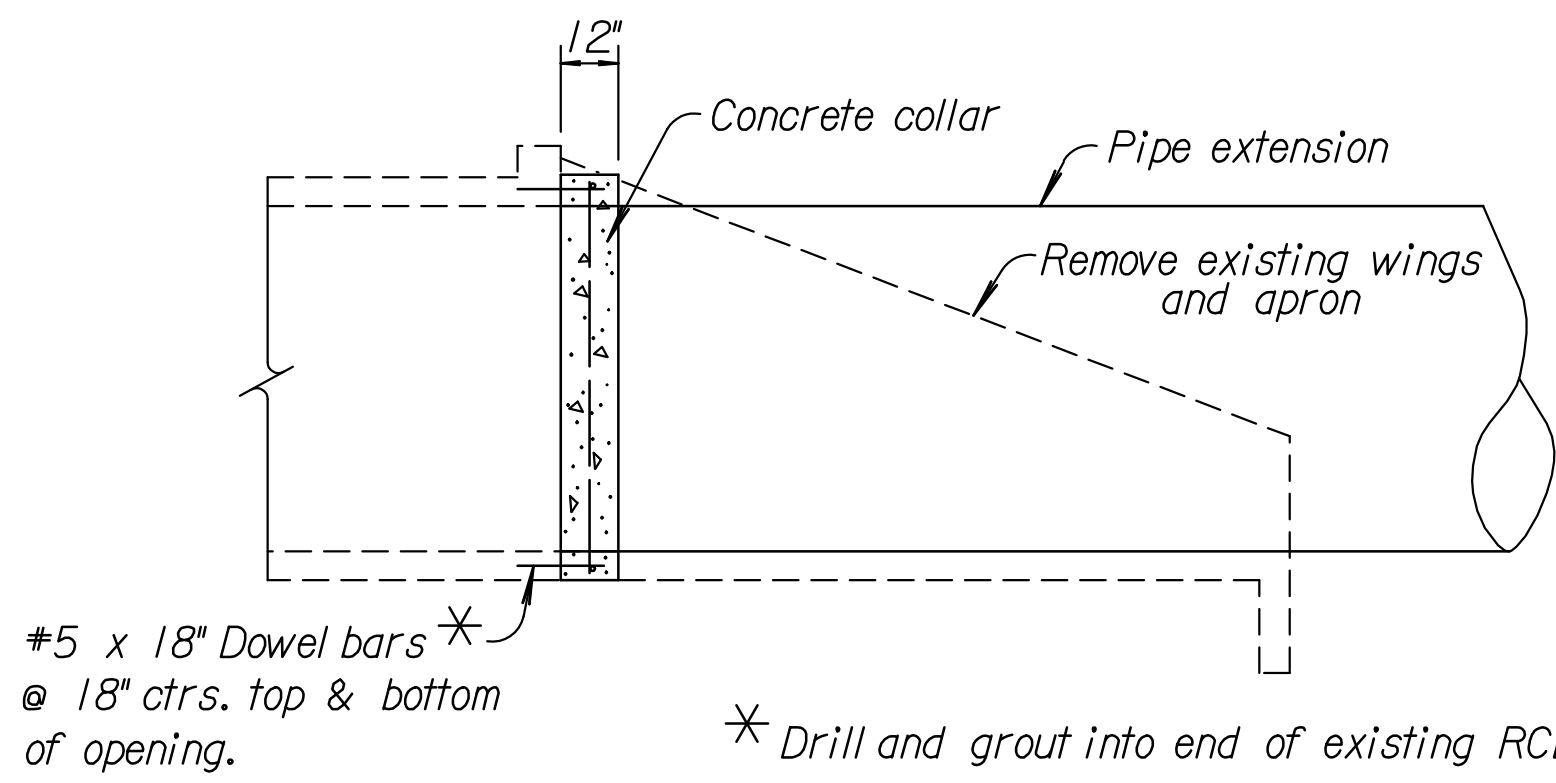
NO.	DATE	REVISIONS	BY	APP'D
8	5-04-05	Class to Grade Conc., notes & details	S.W.K.	J.O.B.
7	4-18-01	Revised General Note	R.J.S.	J.O.B.
6	12-5-00	Rev. General Note flared wing ext.	R.J.S.	J.O.B.
5	12-30-97	Added bentonite system	R.J.S.	J.O.B.

KANSAS DEPARTMENT OF TRANSPORTATION

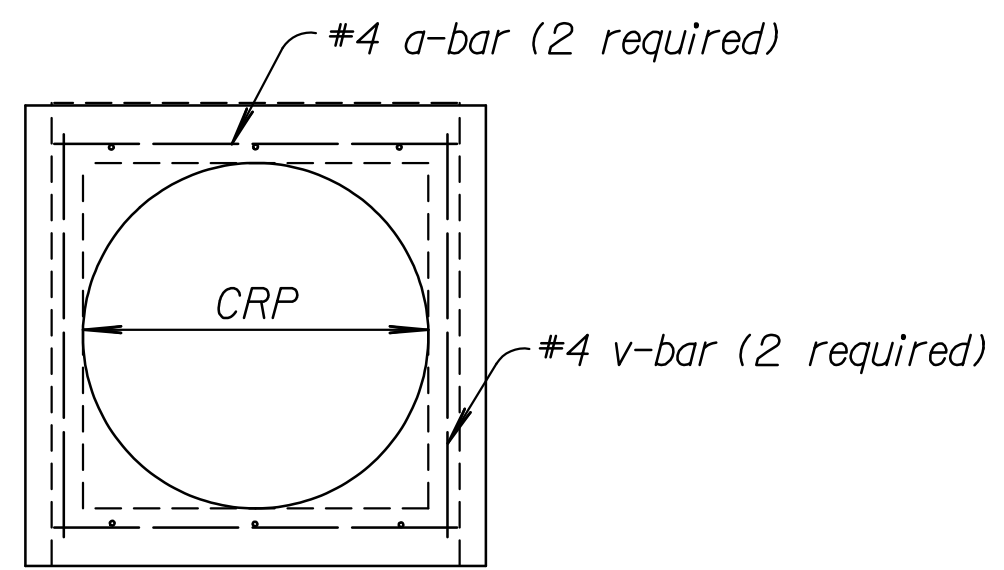
TYPICAL CULVERT EXTENSIONS

RD080

DESIGNED	6-10-05	APP'D	James O. Brewer
QUANTITIES		TRACED	Bowser
DETAIL CK.		QUAN. CK.	



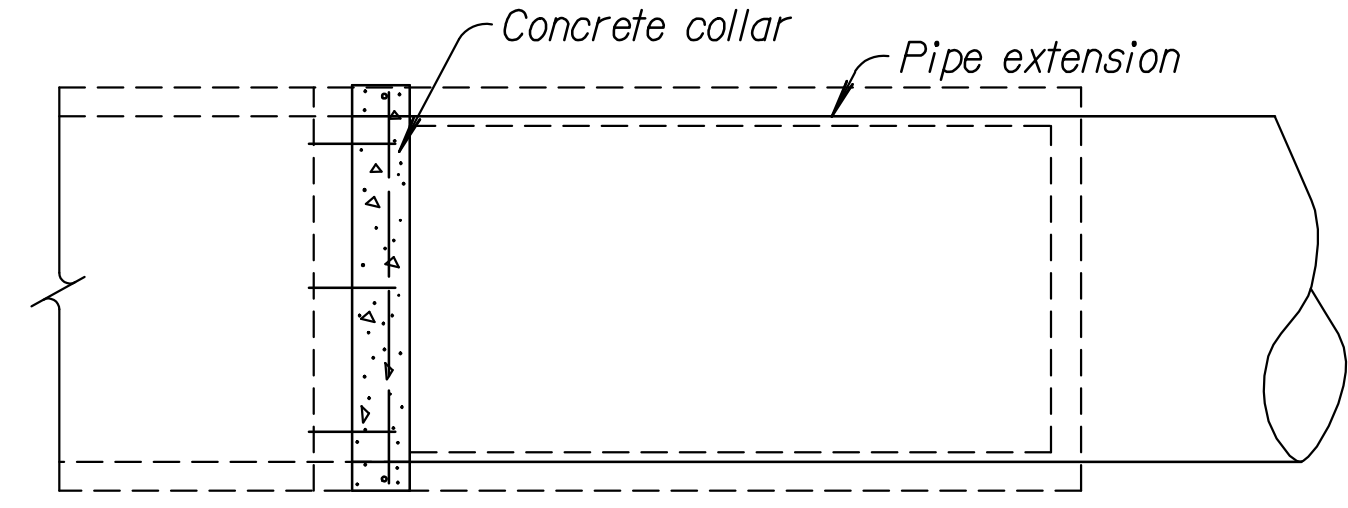
SIDE VIEW



END VIEW

CONSTRUCTION OF COLLAR

NOTE: All Labor, Equipment, Materials, and Incidentals necessary to complete the concrete collar shall not be paid for directly but shall be considered Subsidiary to the individual pipe bid item.



TOP VIEW

Station	Size Exist. R.C.B.	Size C.R.P. Extension	Ext. Length		End Section	
			Lt.	Rt.	Lt.	Rt.

Drawn By: rjm
 Plotted: 6/30/2010
 File: i:\2009\09307\09307-000-Extensionsstandard.dgn