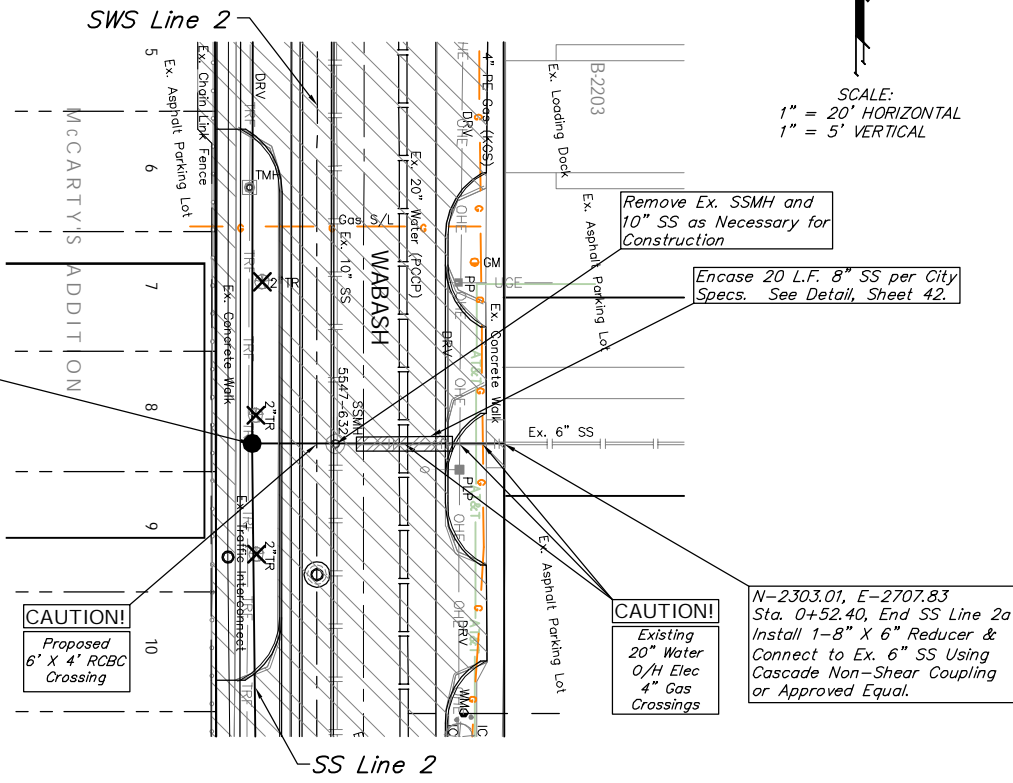
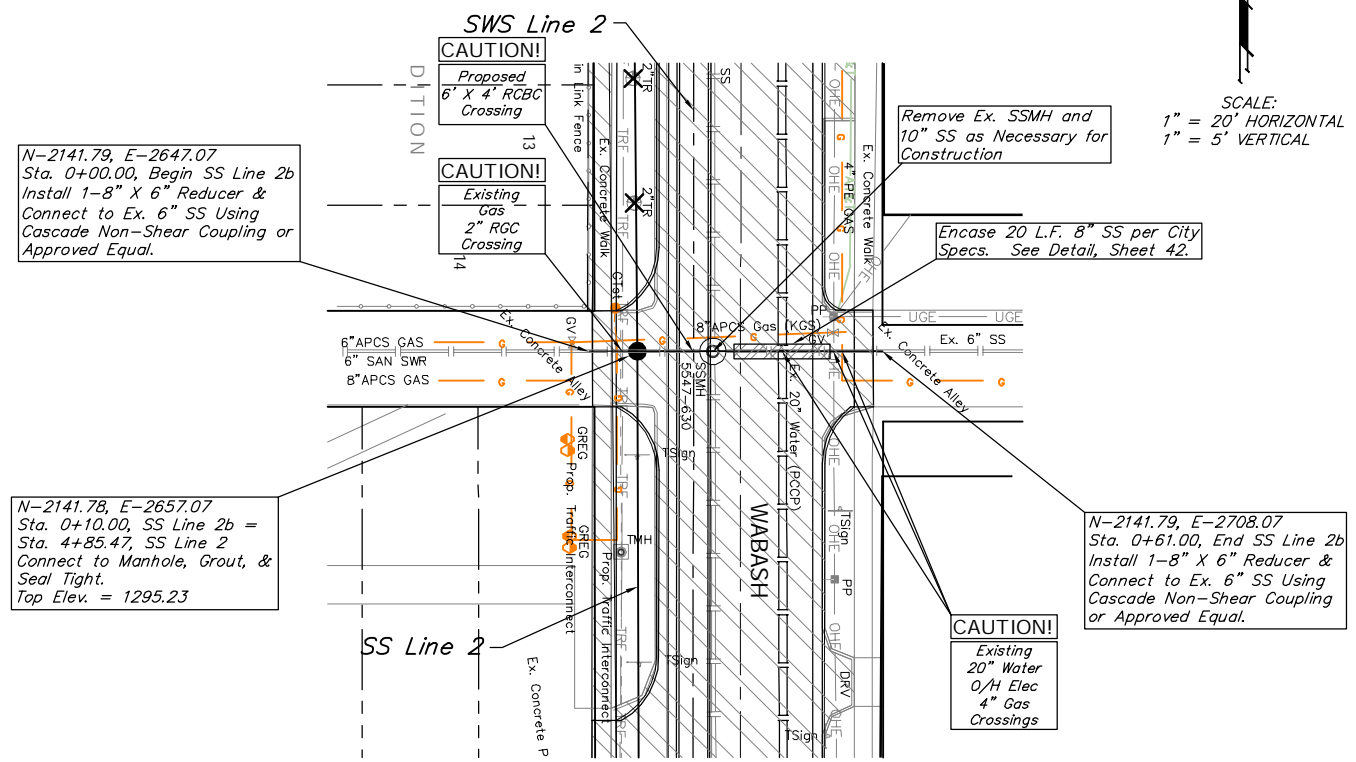


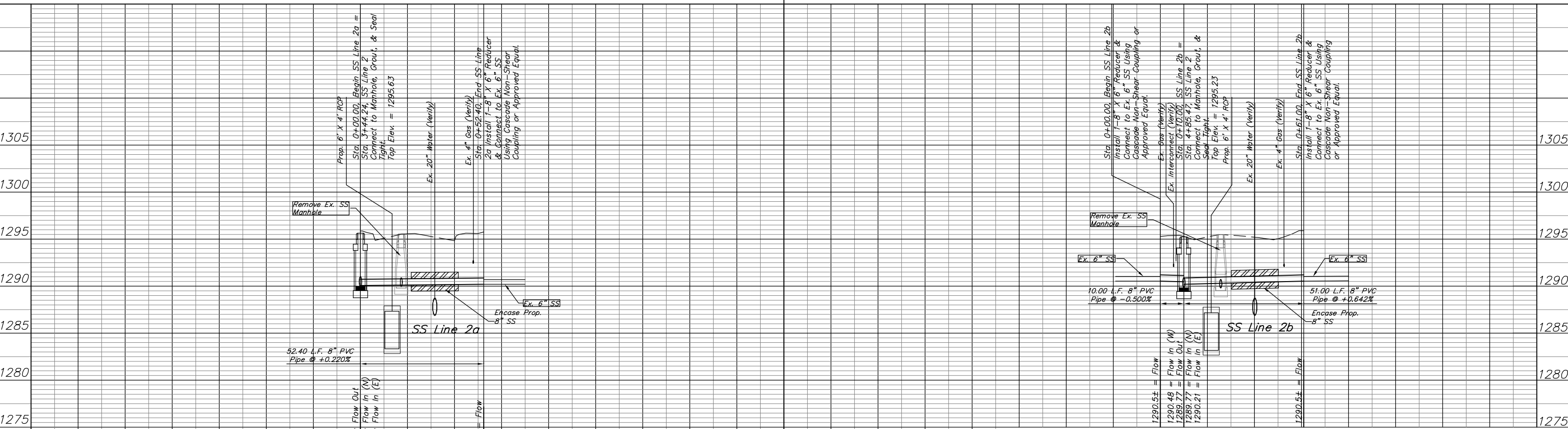
BENCHMARK:
 BM #2 - Chiseled "+" Located in the Northeast Corner of the Intersection of Wabash and 1st Street North, 30.0' East and 34.8' North of the Centerline of Both.
 Elev. = 1295.76 (MSL)



BENCHMARK:
 BM #3 - Chiseled "□" Located on the Southeast Curb Return at the Intersection of Douglas and Ida, 41.60' South and 26.5' East of the Centerline of Both.
 Elev. = 1295.59 (MSL)



Note:
 Trees/Shrubs to be removed are marked thus:



Drawing File: E:\eng\Old Town Drainage\Land\dtg\OTD Base.dwg (SS) 04/10/20
 Design: KK/TPV
 Date: SS/TPV
 Approved: TPV

Project No. 05-05-E258 CITY OF WICHITA, KANSAS
SANITARY SEWER PLAN & PROFILE
 SS Lines 2a & 2b
 DOUGLAS AVENUE DRAINAGE OUTFALL PROJECT

Baughman Company, P.A.
 315 Ellis St. Wichita, KS 67211 P 316-262-7271 F 316-262-0149
 ENGINEERING | SURVEYING | PLANNING | LANDSCAPE ARCHITECTURE

Sheet 28 of 87