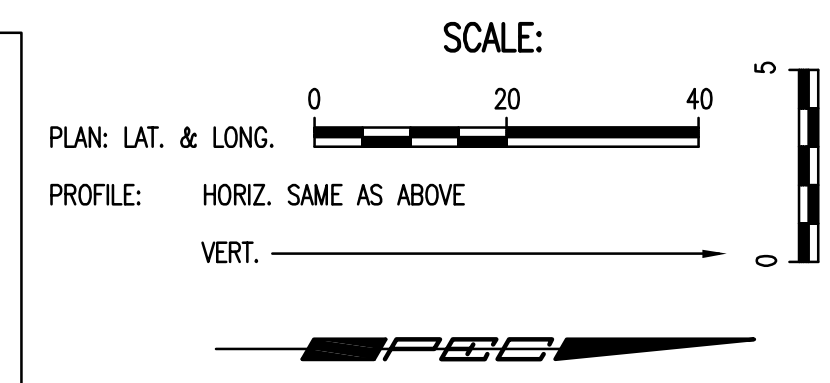
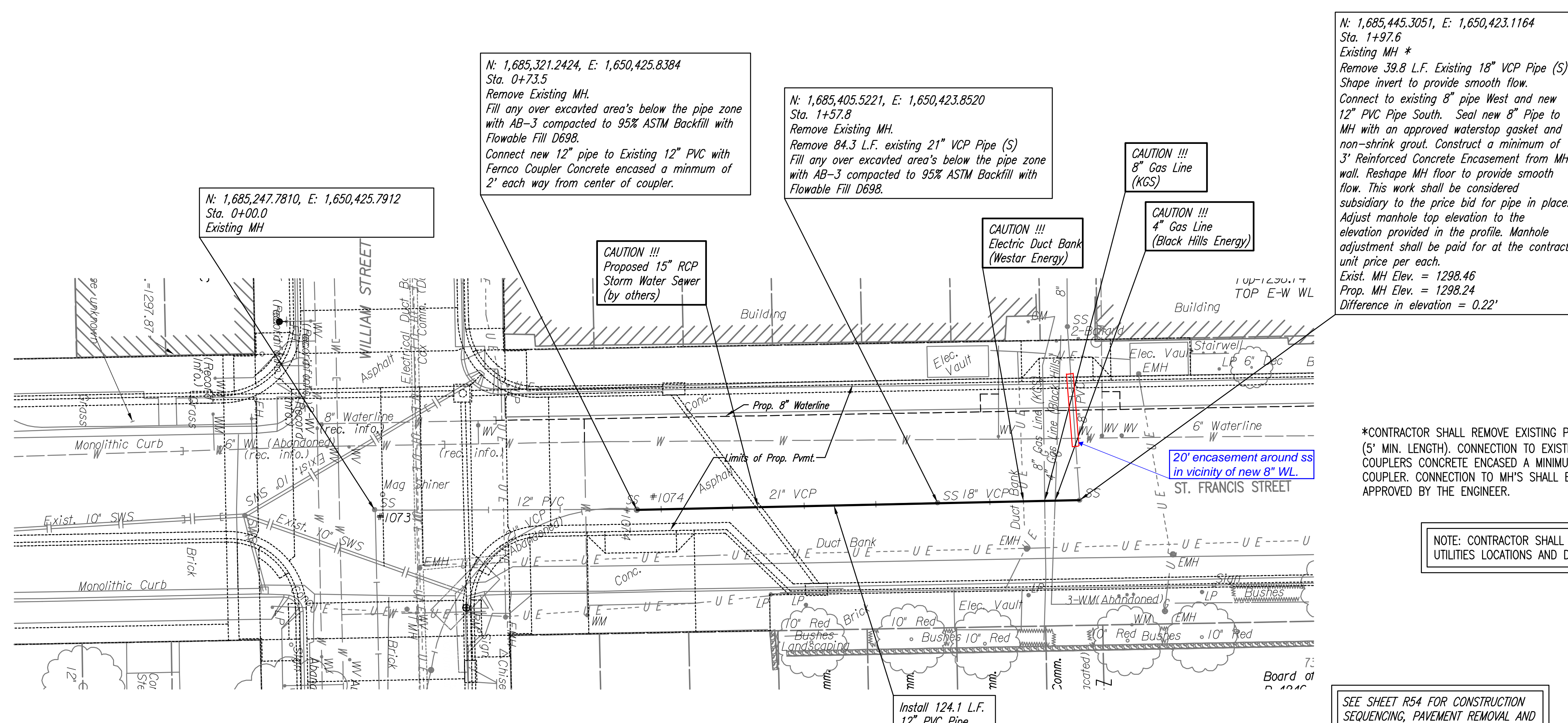


PLAN	CHECKED	DATE
	CHECKED	
BY		

PROFILE	CHECKED	DATE
	CHECKED	
BY		

Saved: 03-05-2009 8:12:22 AM by CSI  
 Plot Scale: 1:20 03-05-2009 11:21:01 AM by CSI  
 G:\2008\08455\001\Emporia\SS\08455-001-C-SSPP02

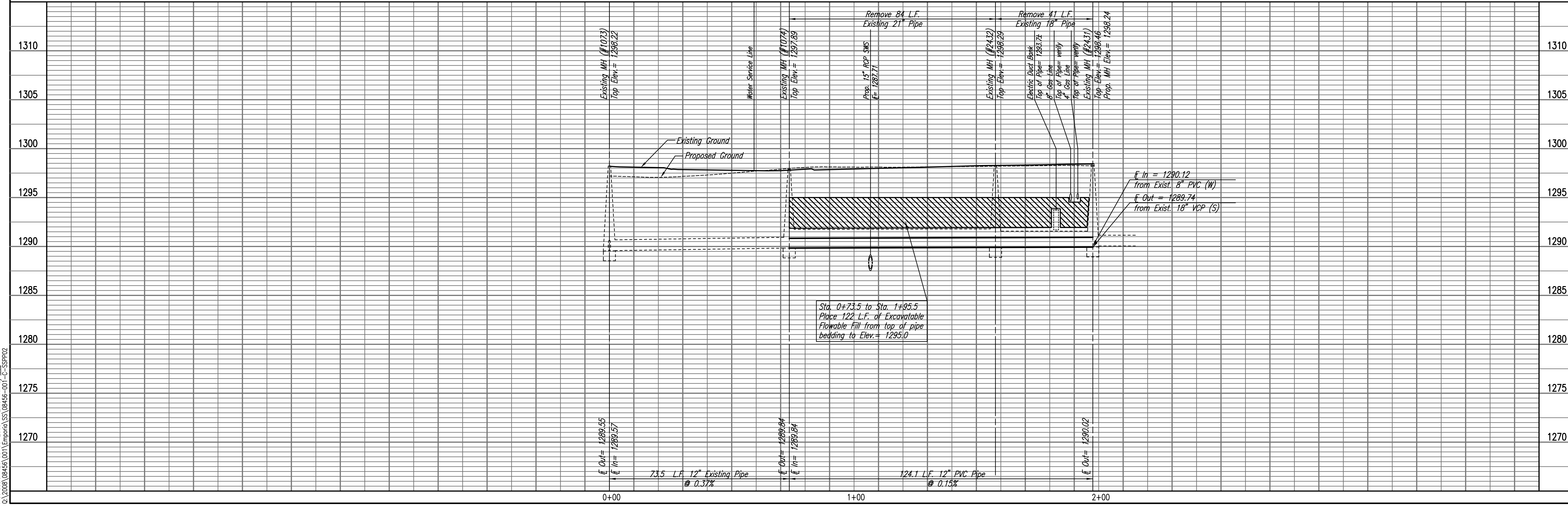


\*CONTRACTOR SHALL REMOVE EXISTING PIPE AS REQUIRED AND REPLACE WITH PVC PIPE (5' MIN. LENGTH). CONNECTION TO EXISTING PIPE SHALL BE MADE WITH FERNCO COUPLERS CONCRETE ENCASED A MINIMUM OF 2' EACH WAY FROM THE CENTER OF THE COUPLER. CONNECTION TO MH'S SHALL BE MADE WITH ALOK GASKETS OR AS OTHERWISE APPROVED BY THE ENGINEER.

NOTE: CONTRACTOR SHALL VERIFY ALL UTILITIES LOCATIONS AND DEPTHS.

SEE SHEET R54 FOR CONSTRUCTION SEQUENCING, PAVEMENT REMOVAL AND REPLACEMENT BY STREET CONTRACTOR.

SANITARY SEWER LINE NO. 2



**Professional Engineering Consultants, P.A.**  
 603 E. TOPEKA AVENUE, SUITE 200, EMPORIA, KANSAS 67202  
 316-262-2691 • FAX 316-262-3003

**JAMES L. ARMOUR, P.E. - CITY ENGINEER**  
 CITY OF WICHITA PROJECT NO. 468-84581/468-84562

**SANITARY SEWER MODIFICATIONS - BETWEEN DOUGLAS AND WILLIAM STREETS AND IN ALLEY BETWEEN TOPEKA AND EMPORIA, NORTH OF WILLIAM**

**SANITARY SEWER LINE NO. 2**

Job No. 35-08456-001  
 Date November 2008

Designed By MDK  
 Drawn By CSL, RJW

Sheet SS4 of 11