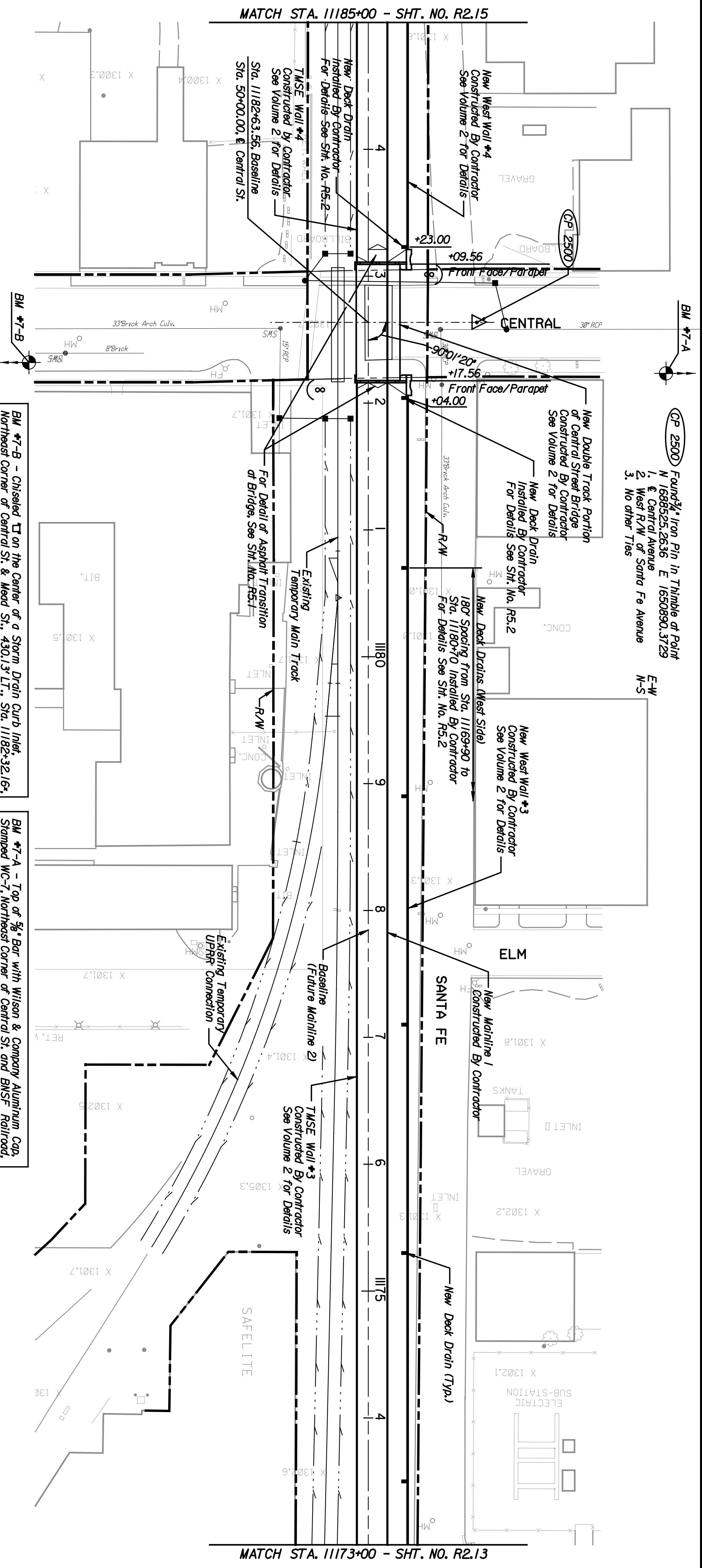


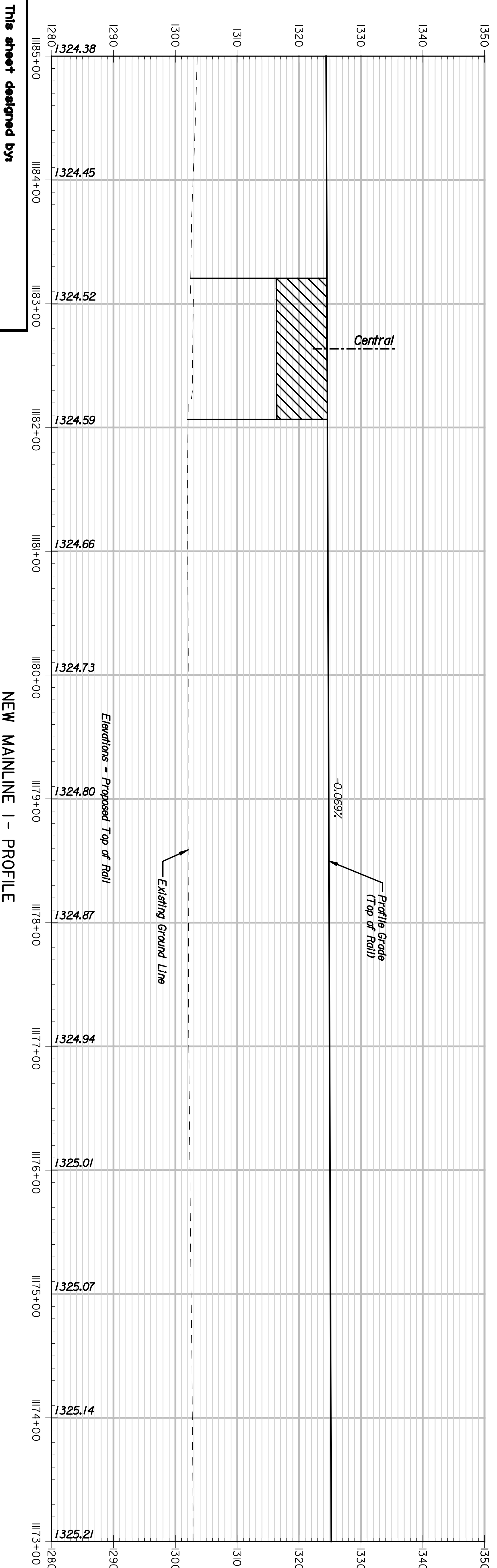
BY	DATE



CP 2500 Found 3/4" Iron Pin in Thimble of Point N 1688525, 2636 E 1650890, 3729  
 1. Central Avenue  
 2. West R/W of Santa Fe Avenue  
 3. No other Ties

BM #7-B - Chiseled  $\square$  on the Center of a Storm Drain Curb Inlet, Northeast Corner of Central St. & Mead St., 430.13' LT., Sta. 11182+32.16', EL. 1298.53  
 \* Existing Mainline Stationing

BM #7-A - Top of 3/8" Bar with Wilson & Company Aluminum Cap, Stamped WC-7, Northeast Corner of Central St. and BMSF Railroad, 394.17' RT., Sta. 11182+23.35, EL. 1301.90  
 \* Existing Mainline Stationing



This sheet designed by:



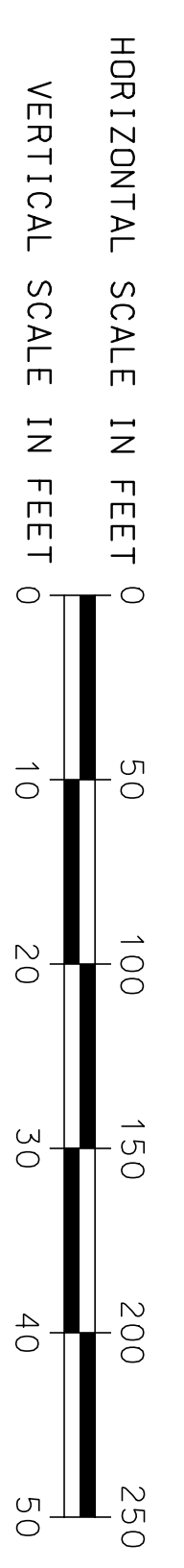
ARCHITECTS ENGINEERS PLANNERS

NEW MAINLINE 1 - PROFILE

Elevations = Proposed Top of Rail

Existing Ground Line

Profile Grade (Top of Rail)



STATE	PROJECT NO.	YEAR	SHEET NO.	TOTAL SHEETS
KANSAS	472-84071	2005	R2.14	



REVISIONS	
NO.	DATE

CITY OF WICHITA			
WICHITA CENTRAL CORRIDOR			
PHASE 2 - TRACK WORK			
PLAN AND PROFILE			
STA. 11173+00 TO STA. 11185+00			
SHEET NO.	OF	SCALE	APPD.
DESIGNED	REP	DETAILED	JDS
DESIGN CR.	RSB	DETAIL CR.	REP
			QUANTITIES
			TRACED
			TRACE CR.