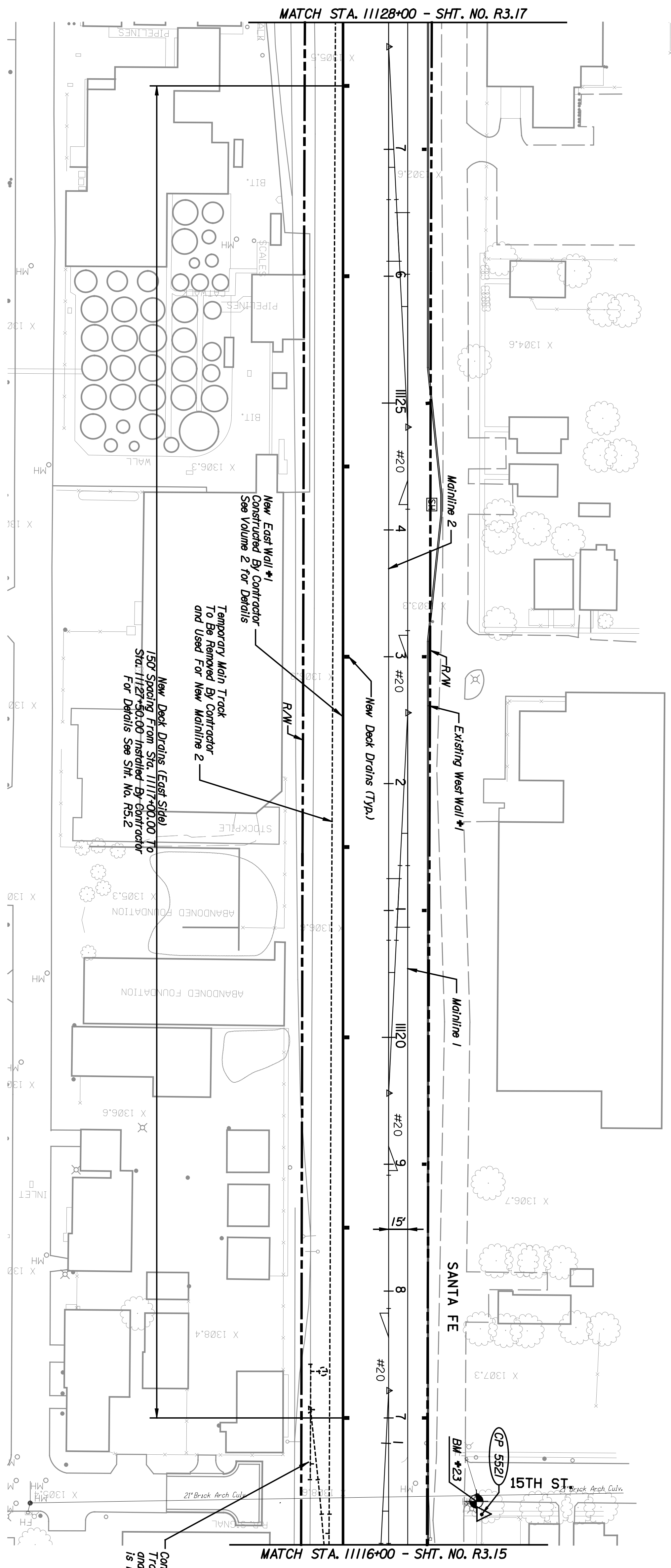


BY	DATE

**ENTB**  
 ARCHITECTS ENGINEERS PLANNERS

This sheet designed by:

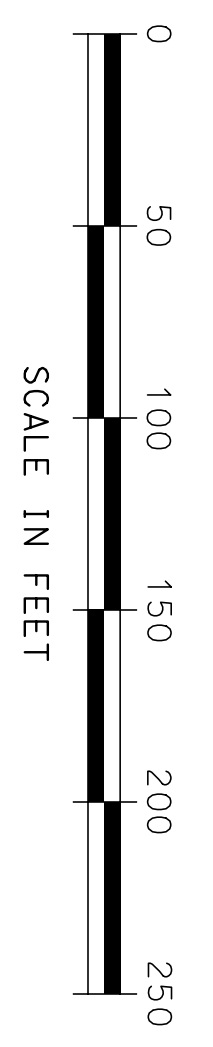
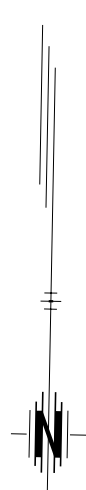


**GP 5521** Found Chiseled #4 of Rein N 1695163, 97'98 E 1650778, 71'89 1. Sidewalk on SE Corner of Lot 27 2. No other Ties

**BM #23** - Chiseled 'T' on Top of Curb, West End of Curb Return, Northwest Corner of Santa Fe St. & 15th Street, 88.05' RT., Sta. 11116+34.47', EL. 1306.82  
 \* Existing Mainline Stationing

Contractor to Relocate #9 Turnout To WTA Track Opposite Mainline Sta. 11115+71.72 and Construct 110' WTA 90 After Turnout is Removed

**NOTES:**  
 1. Removal of Temporary Main Track to be done by the contractor after operations have switched to New Mainline 1.



SHEET NO.	OF	SCALE	DESIGNED	REP	SCALE	DETAILED	JDS	QUANTITIES	APPD.	TRADED
DESIGN CR.	RSB	RSB	RSB	RSB	RSB	RSB	RSB	RSB	RSB	RSB

NO.		DATE		REVISIONS		BY	APPD.

**CITY OF WICHITA**  
**WICHITA CENTRAL CORRIDOR**  
**PHASE 3 - TRACK WORK**  
**PLAN**  
**STA. 1116+00 TO STA. 1128+00**

STATE	PROJECT NO.	YEAR	SHEET NO.	TOTAL SHEETS
KANSAS	472-84071	2005	R316	