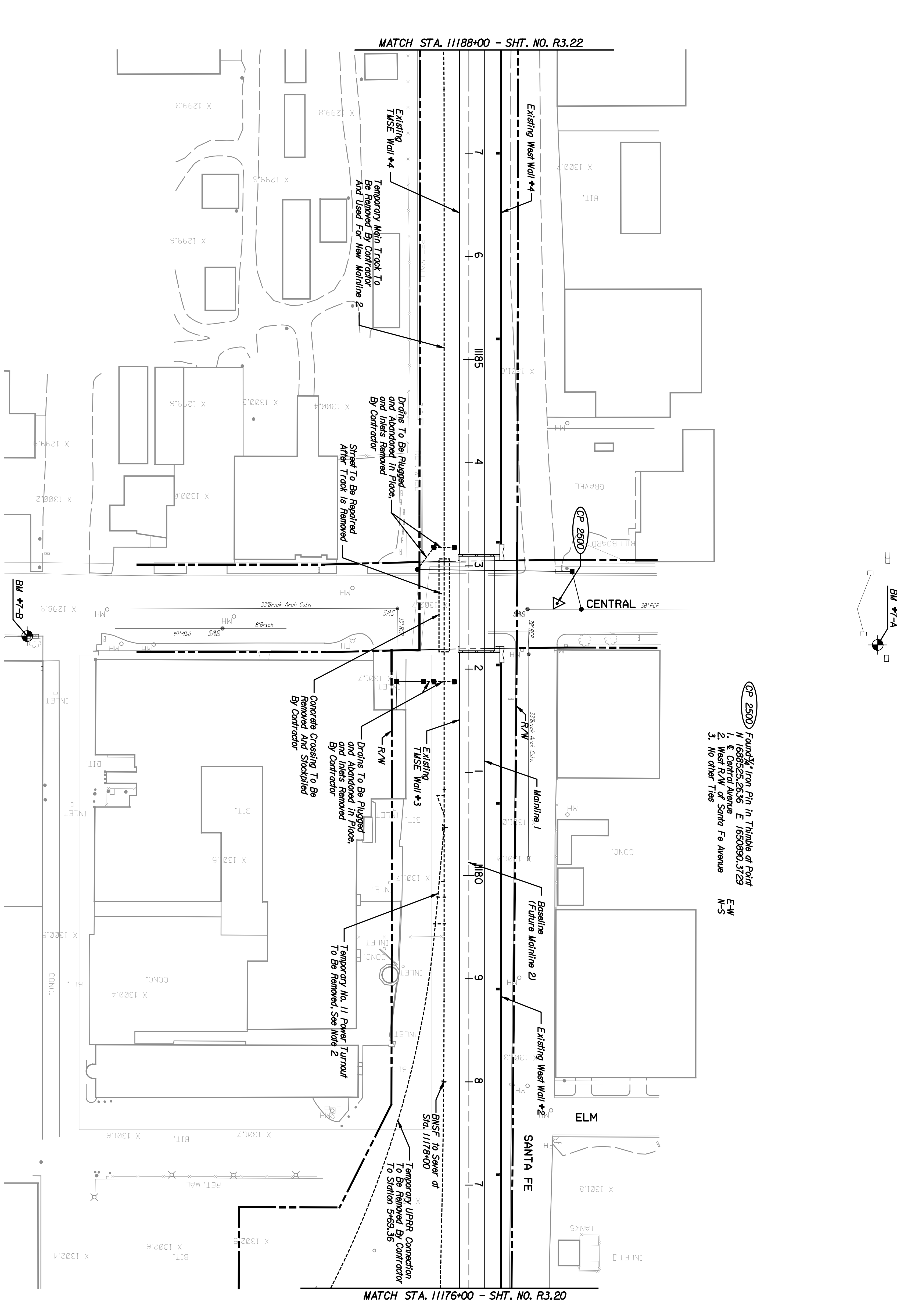


BY	DATE

GNTEB
 ARCHITECTS ENGINEERS PLANNERS

This sheet designed by:



CP 2500 Found 3/4" Iron Pin in Thimble of Point
 N 1688523.2636 E 1650890.3729
 1. E. Central Avenue
 2. West R/W of Santa Fe Avenue
 3. No other Ties
 E-W
 N-S

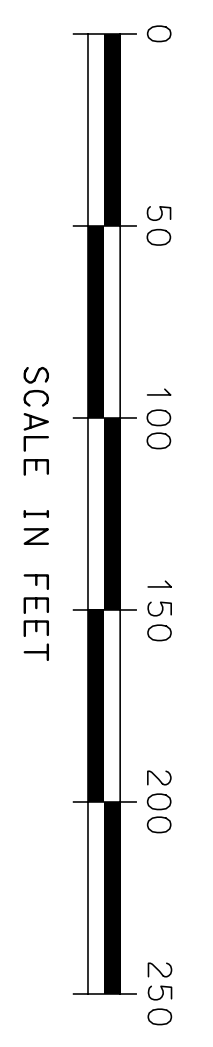


- NOTES:**
1. Removal of Temporary Main Track North of Sta. 11178+00 to be done by the contractor after operations have switched to New Mainline 1.
 2. Removal of Temporary UPRR Connection and Temporary Main Track South of connection to be done by the contractor after operations have switched to the New UPRR Main Track.

STATE	PROJECT NO.	YEAR	SHEET NO.	TOTAL SHEETS
KANSAS	472-84071	2005	R3.21	

BM #7-B - Chiseled T on the Center of a Storm Drain Curb Inlet, Northeast Corner of Central St. & Mead St., 430.3' LT., Sta. 11182+32.16+ EL. 1298.53
 * Existing Mainline Stationing

BM #7-A - Top of 3/4" Bar with Wilson & Company Aluminum Cap, Stamped WC-7, Northeast Corner of Central St. and BNSF Railroad, 394.17' RT., Sta. 11182+23.35+, EL. 1301.90
 * Existing Mainline Stationing



SHEET NO.		SCALE		APPD.	
DESIGNED	REP	DETAILED	JDS	QUANTITIES	TRACED
DESIGN CR.	RSB	DETAILED CR.	REP	QUANTITIES	TRACE CR.

CITY OF WICHITA
WICHITA CENTRAL CORRIDOR
PHASE 3 - TRACK WORK
PLAN
STA. 11176+00 TO STA. 11188+00