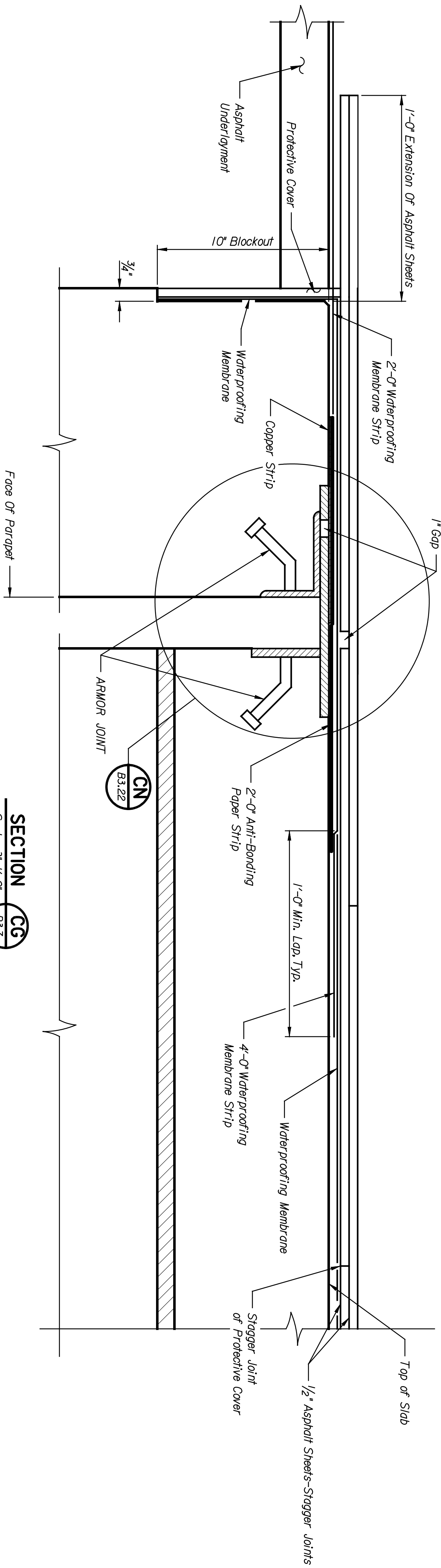
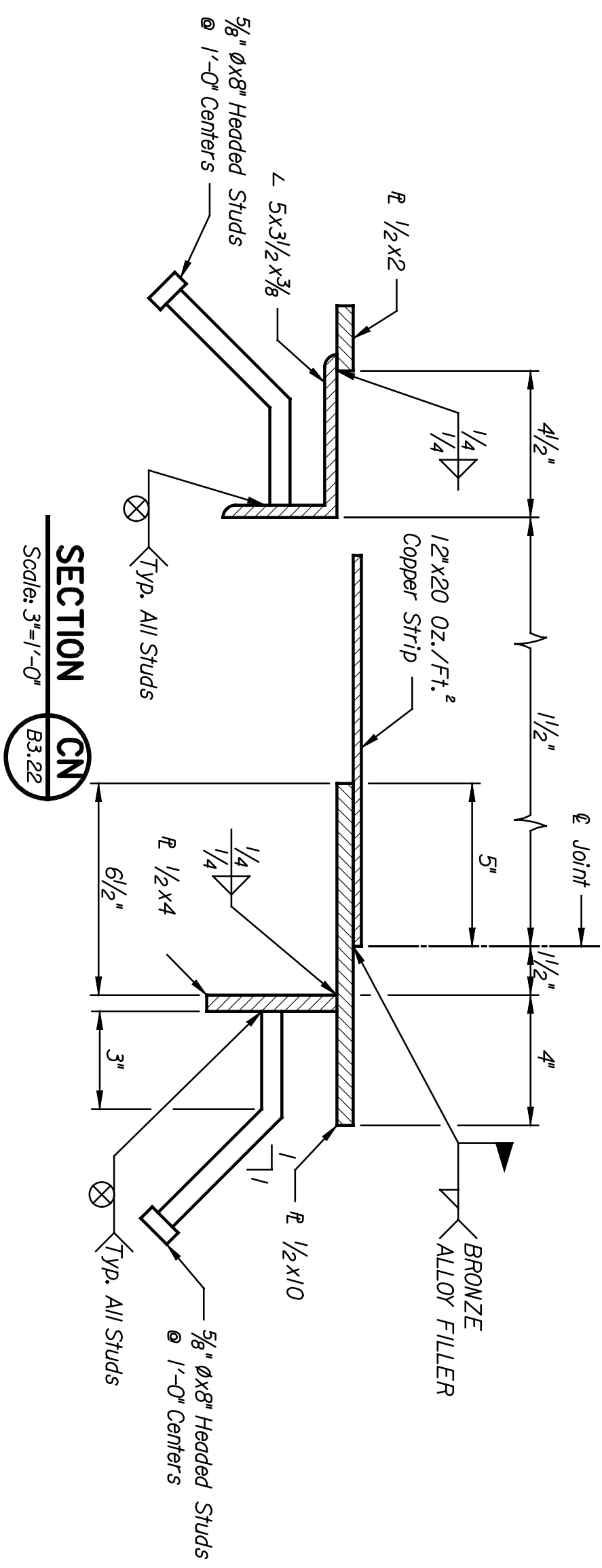


BY	DATE

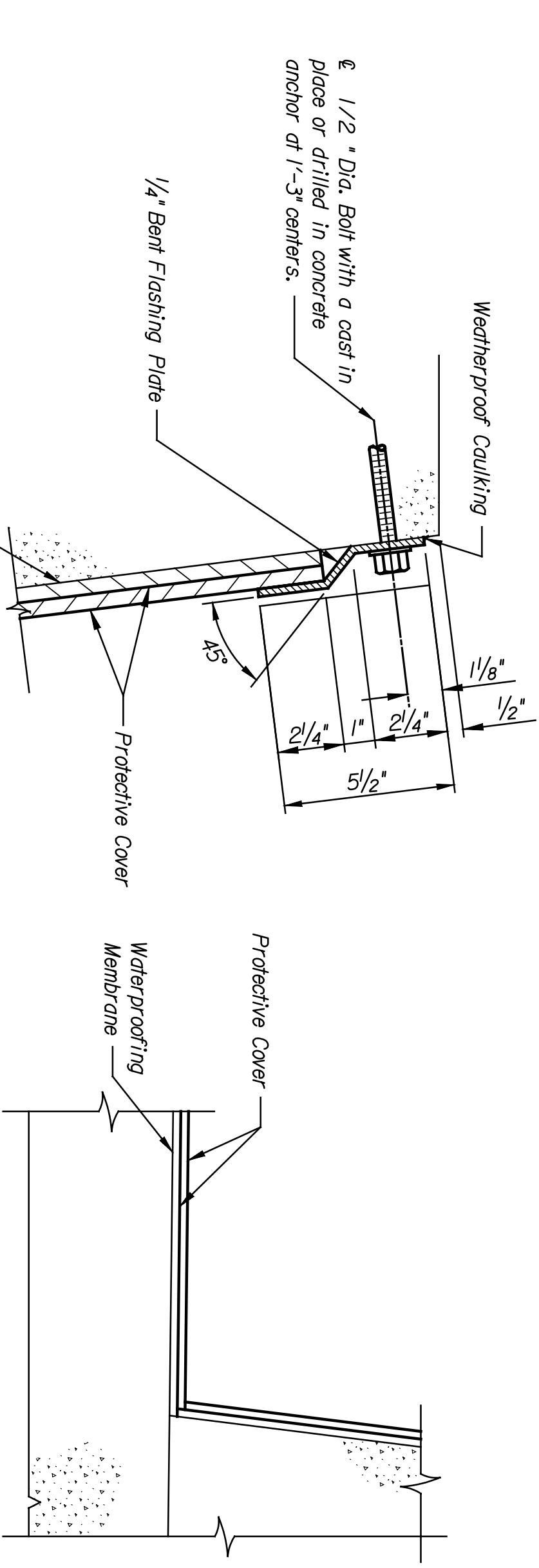
Plotted on: 04-JAN-2005 13:09 *time\$
 djmlison Plot Queue: #queue\$
 Plot Scale: #scale\$ Pen Table: #pentables\$
 Design Filename: k:\b29049\BridgesDec2004\Base Bid\Murdock\drawings\m22.dgn



SECTION CG
 B3.7
 B3.10
 B3.18
 Scale: 3/8"=1'-0"



SECTION CN
 B3.22
 Scale: 3/8"=1'-0"



DETAIL CH
 B3.19
 Not To Scale

DETAIL CJ
 B3.19
 Not To Scale

This sheet designed by:

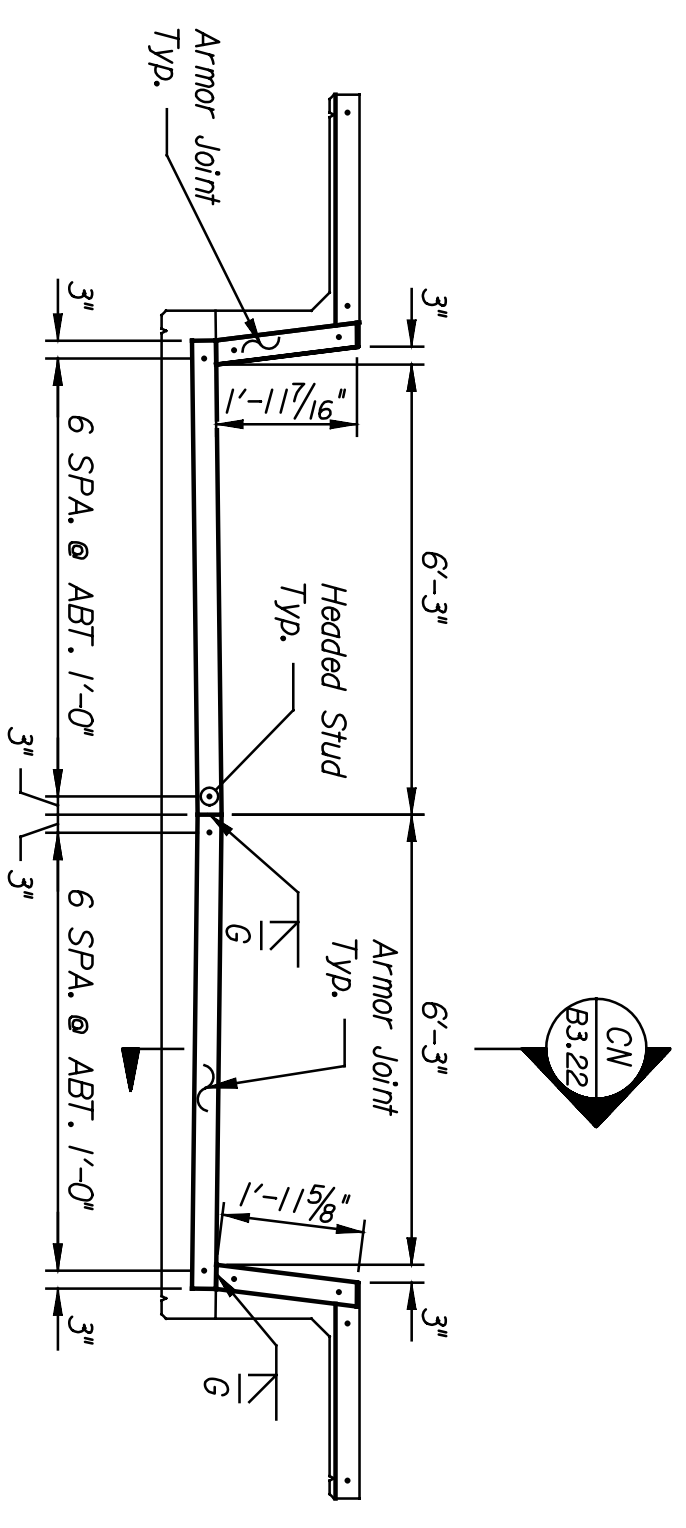


ARCHITECTS ENGINEERS PLANNERS

STATE	PROJECT NO.	YEAR	TOTAL SHEETS
KANSAS	472-84071	2005	B3.22

NOTES:

- Waterproofing materials, accessories and construction shall conform to the requirements of the AEMMA Manual of Railway Engineering, Chapter 29-Waterproofing, unless noted otherwise.
- Waterproofing shall consist of 0.600-inch thick elastomeric sheets of butyl (IIR) or ethylene propylene diene terpolymer (EPDM), or a 0.100-inch thick cold, spray-applied waterproofing membrane.
- A protective cover placed over the waterproofing membrane shall consist of two layers of asphalt planks or asphaltic panels conforming to and placed in accordance with the specifications.
- Anti-bonding paper shall be impervious to bituminous materials and have a minimum mass of 5 lbs per 100 SF (0.25kg/m²).
- Concrete anchors for flashing plates shall be stainless steel, cast-in-place or drilled anchors.
- Flashing plates shall conform to ASTM A36, ASTM A709 Gr. 36 or better and shall be hot-dipped galvanized, in accordance with ASTM A123, after fabrication.
- Copper sheet or strip shall conform to ASTM B370.
- Armor joint plates and angles shall conform to ASTM A36 or ASTM A709 Gr. 36 or better and shall be hot-dipped galvanized in accordance with ASTM A123 after fabrication.



ARMOR JOINT DETAIL/ELEVATION
 Scale: 3/8"=1'-0"

NO.	DATE	REVISIONS	BY	APP'D.
3				
2				
1				

CITY OF WICHITA
WICHITA CENTRAL CORRIDOR
MURDOCK
WATERPROOFING & DRAINAGE DETAILS

LOCATION:	SCALE: AS NOTED/APP'D.	SHEET NO.:	OF
RMSF BR. 2015	DESIGNED: EKD	1	3
WICHITA, KS	DETAILED: DJM	DATE:	QUANTITIES: DJM
	DESIGN: G.C.	DATE:	TRACED: DJM
	DWHT: JWH	DATE:	TRACED: G.C.
	DWHT: DMH	DATE:	TRACED: DMH