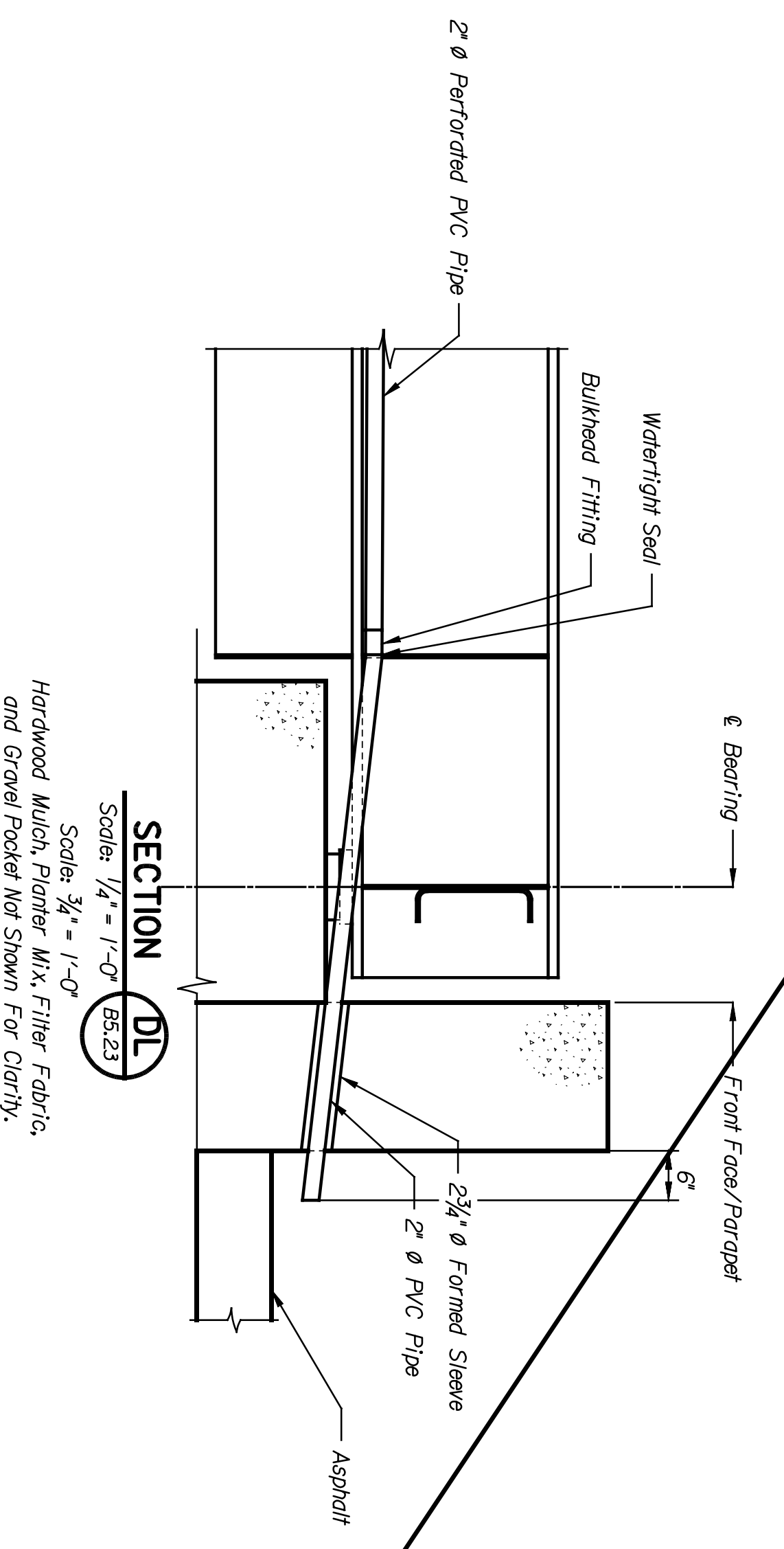
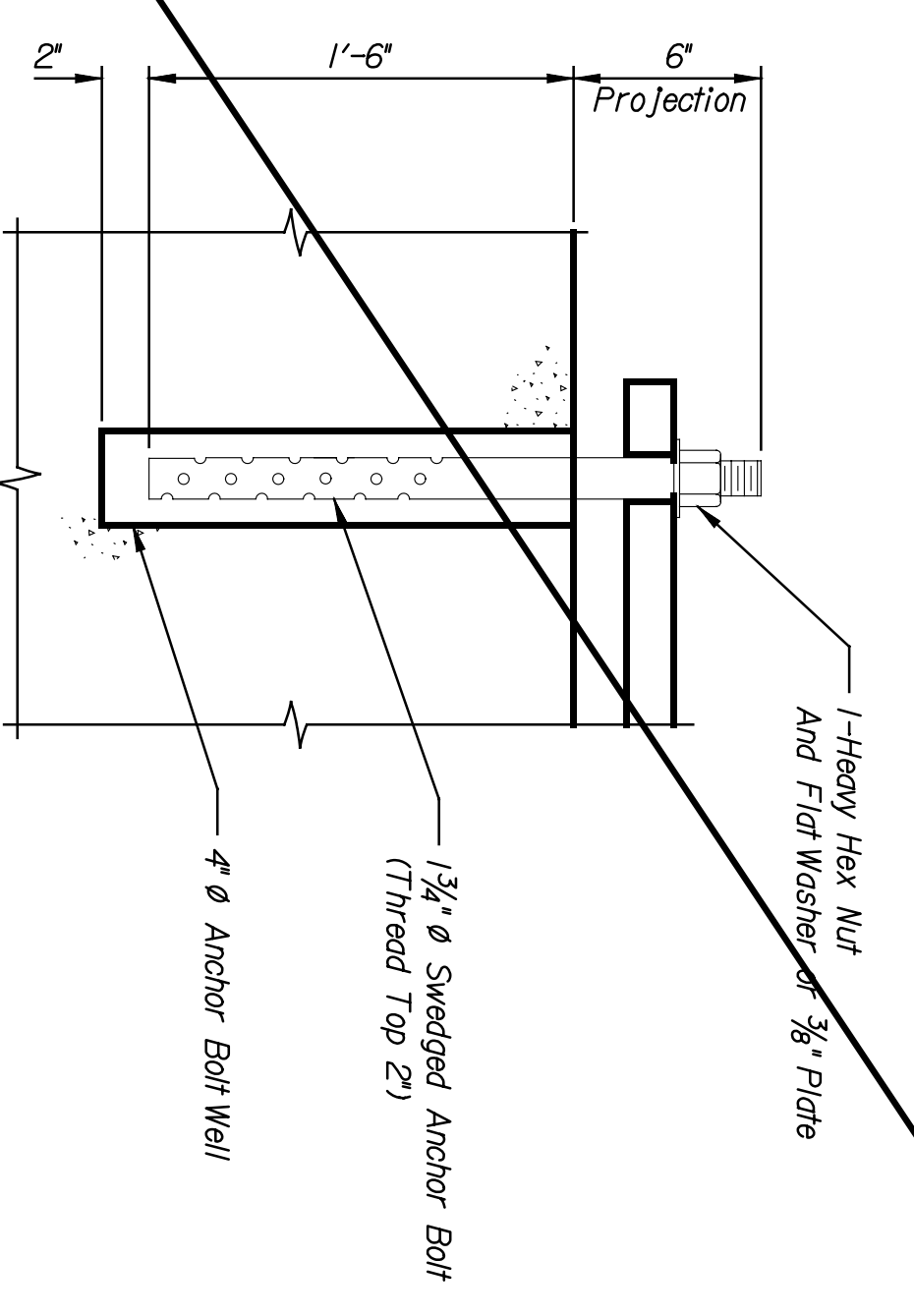
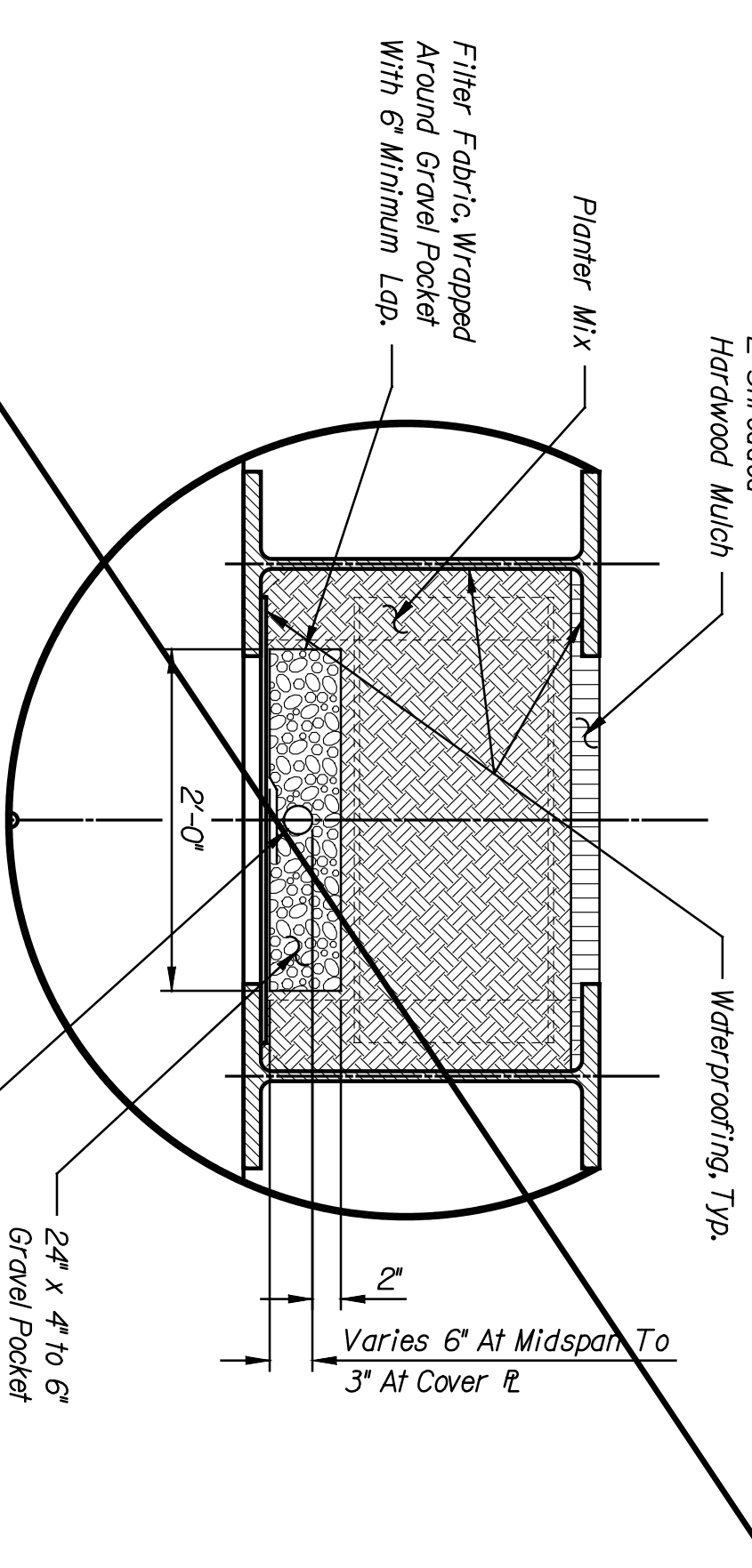
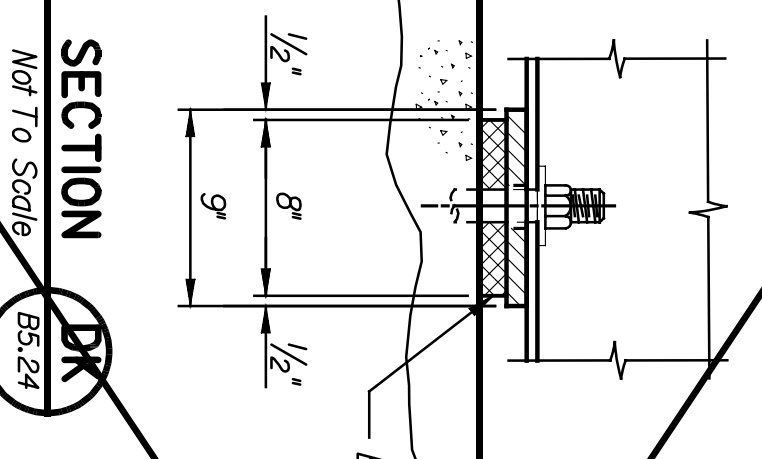
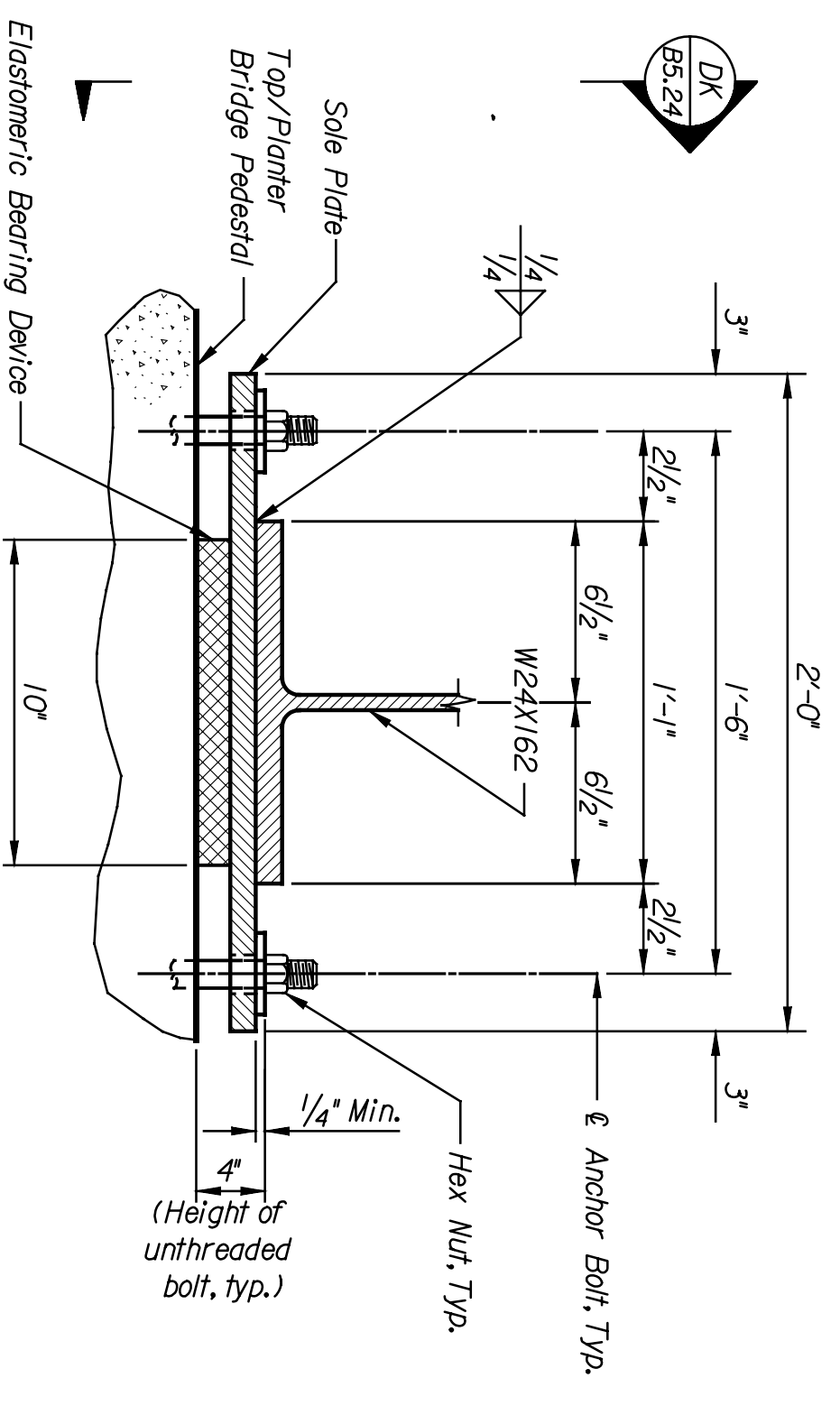
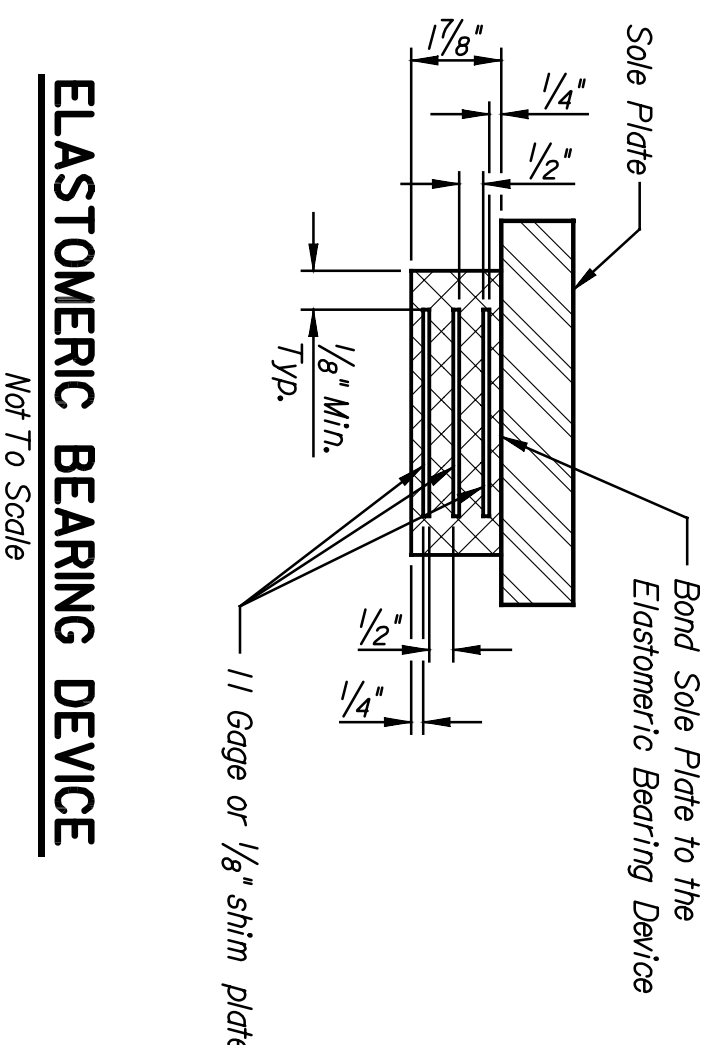
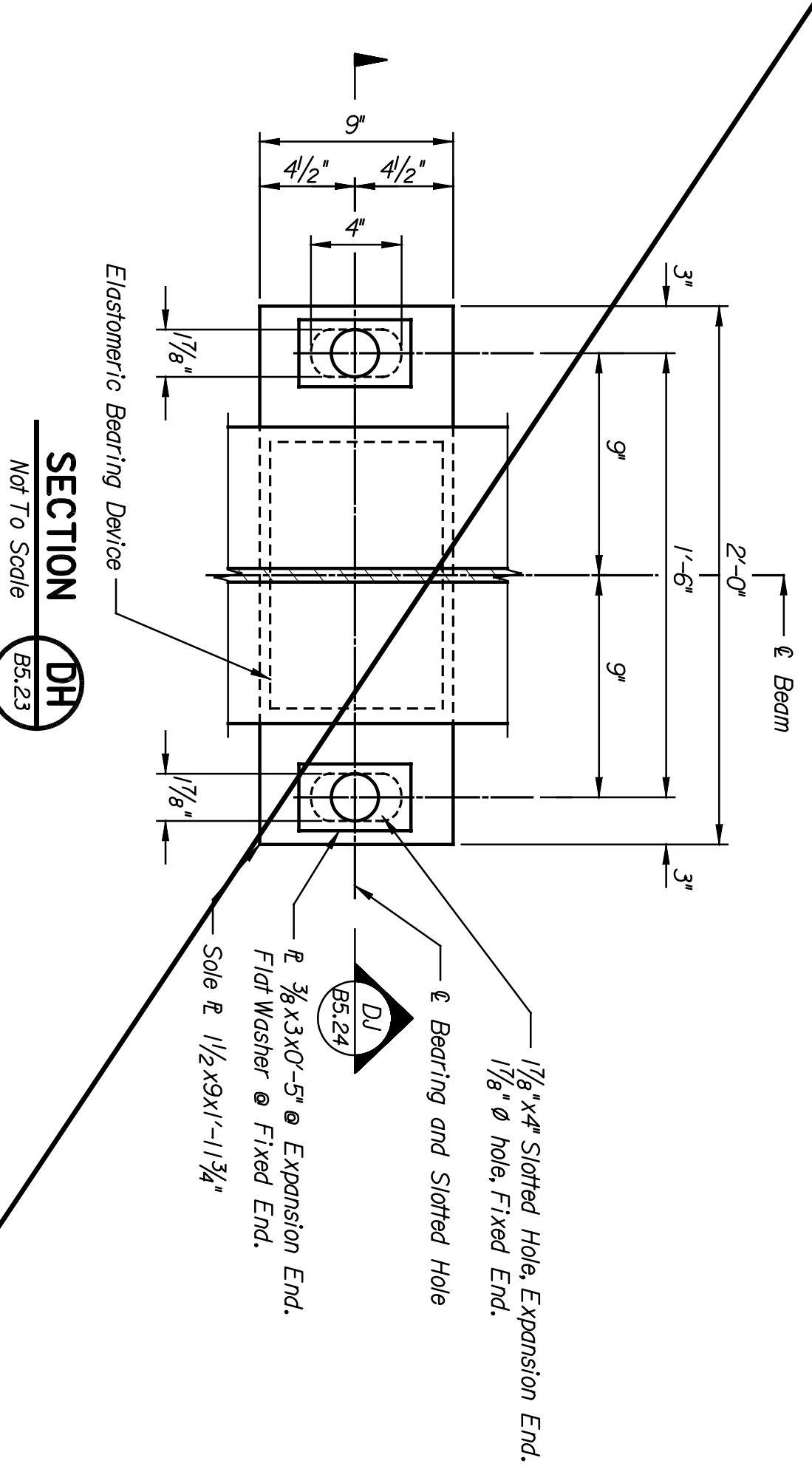


BY	DATE

Plotted on: 06-JAN-2005 15:04 \*time\$  
 scindrell Plot Queue: #queue\$  
 Plot Scale: #scale\$ Pen Table: #pentable\$  
 Design Filename: k:\b29049\BridgesDec2004\Base Bld\02ndStreet\drawings\sl3c.dgn.



**NOTES:**  
 Anchor bolts for the expansion end shall be of the size shown and composed of steel conforming to ASTM F1554, Grade 105, Class 1A or 2A, with supplementary requirement S3; each with one rectangular plate washer of the size shown and one Heavy Hex Nut ASTM A563, Grade DH.  
 All holes for anchor bolts will be 3/8" larger than the nominal anchor bolt diameter, unless noted otherwise.  
 All holes through main structural members shall be drilled full-size or shall be sub-drilled 1/4" less than full diameter and reamed to full-size.  
 All washers shall be located under the turned element.  
 The materials, fabrication and installation of the Elastomeric Bearing Devices shall conform to the specifications.  
 The elastomeric bearing devices shall be bonded to the sole plate by vulcanization.  
 The waterproofing for the interior of the planter bridge shall consist of a 0.100-inch thick cold-spray-applied waterproofing membrane applied to all surfaces in contact with the planter mix, as indicated in the plans and specifications.  
 The under-drain for the planter bridge shall consist of a geocomposite drain-perforated and non-perforated PVC pipe, Schedule 40, with fittings and clean gravel fill conforming to the specifications.  
 The planter mix shall be as specified on the Planting Plans, Planting Details and Specifications.  
 Refer to Planter Bridge Details I for additional notes.

**REFERENCES:**  
 Anchor Bolt Layout, Refer to BS.5.  
 Irrigation Plan, Refer to L.3.15.  
 Planting Plan, Refer to L.2.15

**CNTB**  
 ARCHITECTS ENGINEERS PLANNERS

This sheet designed by:

STATE	PROJECT NO.	YEAR	SHEET NO.	TOTAL SHEETS
KANSAS	472-84071	2005	BS.24	

SHEET NO.	OF	SCALE AS NOTED	APP'D.
DESIGNED	BY	DETAILS	BY
DESIGN	BY	DETAILS	BY

NO.	DATE	REVISIONS	BY	APP'D.
1				
2				
3				

**CITY OF WICHITA**  
**2ND STREET**  
**PLANTER BRIDGE DETAILS**

LOCATION: RNSF BR. 20.0  
 WICHITA, KS  
 LINE SEGMENT 7400