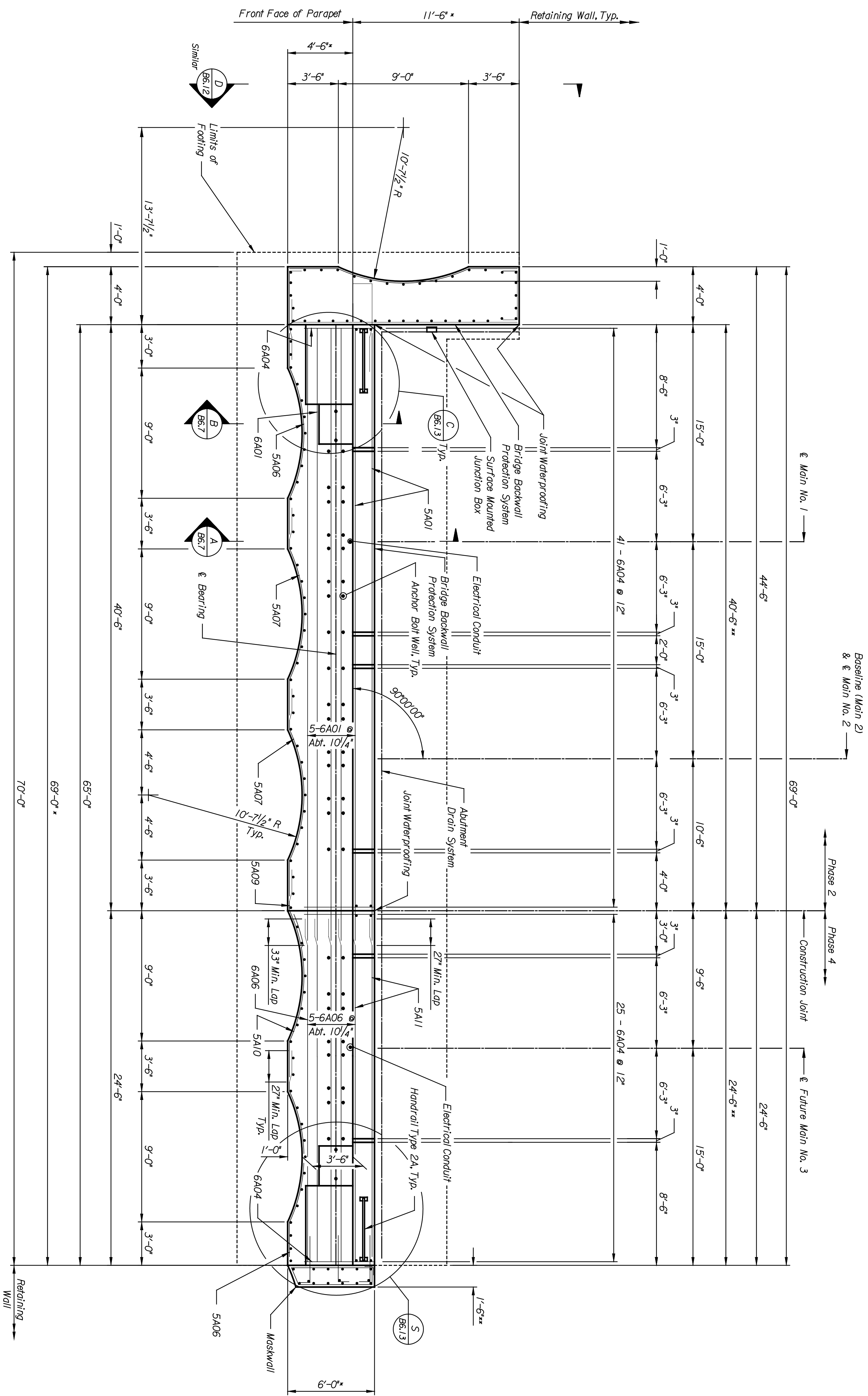
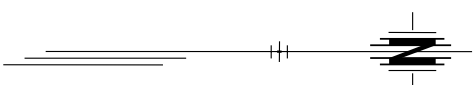


	BY	DATE

Plotted on: 04-JAN-2005 13:25 *time\$
 djmlson Plot Queue: #queue\$
 Plot Scale: #scale\$ Pen Table: #pentables
 Design Filename: k:\b29049\BridgesDec2004\Base Bld\01s+Street\drawings\fl09.dgn.



PLAN
 Scale: 1/4" = 1'-0"

PNTB
 ARCHITECTS ENGINEERS PLANNERS

This sheet designed by:

STATE	PROJECT NO.	YEAR	SHEET NO.	TOTAL SHEETS
KANSAS	472-84071	2005	B6.6	

ABUTMENT NOTES:
 Concrete for the abutment stem, parapet, wingwalls and pedestals for the collision beam shall be Concrete, Grade 4.0 (AEL), with an f'c=4000 psi and shall be provided in accordance with the specifications.
 Concrete for the abutment footings shall be Grade 4.0 with an f'c=4000 psi and shall be provided in accordance with the specifications.
 All reinforcing steel shall conform to ASTM A615 or A706, Grade 60.
 Epoxy-coated reinforcing steel shall conform to ASTM 775.
 Exposed concrete edges shall be chamfered 3/4", unless noted otherwise.
 Horizontal construction joints are not permissible, unless shown or approved by the engineer.
 Joint waterproofing shall be applied on the rear face of the abutment over all horizontal and vertical construction joints and rustications in accordance with the specifications.
 Water stops across vertical construction joints shall conform to the specifications.

The rear face of the abutment and wingwalls shall be protected with the Bridge Backwall Protection System in accordance with the plans and specifications.
 Upon removal of the concrete forms, the faces of the abutment and wingwalls visible after back-filling shall receive a light sand-blast finish. After sand-blasting, a concrete masonry coating shall be applied.
 A concrete masonry coating shall be applied in accordance with the specifications, to the bridge seat and the faces of the abutments, wingwalls and components that are visible after back-filling.
 After application of a concrete sealer, a graffiti control system shall be applied in accordance with the specifications, to the faces of the abutments, wingwalls and components that are visible after back-filling.
 Horizontal reinforcing under the bridge seat may be adjusted to avoid anchor ball wall locations.
 Footing reinforcing may be adjusted laterally to avoid conflicts with abutment stem reinforcing.
 Provide an abutment drainage system in conformance with the specifications.
 Provide a 1/2" minimum drainage slope along the abutment drain system from the center of the abutment.
 Connect the abutment drain system to the surface drain downspouts with pipe fittings.
 Coordinate installation of electrical conduit and lighting.

NOTE:
 * Limits of Concrete Masonry Coating Concrete Sealer and Graffiti Protection System.
 ** Limits of Bridge Backwall Protection.

SHEET NO.		OF	SCALE AS NOTED	APP'D.	DESIGNED	EN'D	DETAILED	DRAWN	QUANTITIES	DRAWN	TRACED	DRAWN
1												
2												
3												
NO.		DATE	REVISIONS		BY	APP'D.						

CITY OF WICHITA
WICHITA CENTRAL CORRIDOR
1ST STREET
ABUTMENT NO. 1 PLAN

LOCATION: RWSF BR. 20.2 WICHITA, KS
 LINE SEGMENT 7400