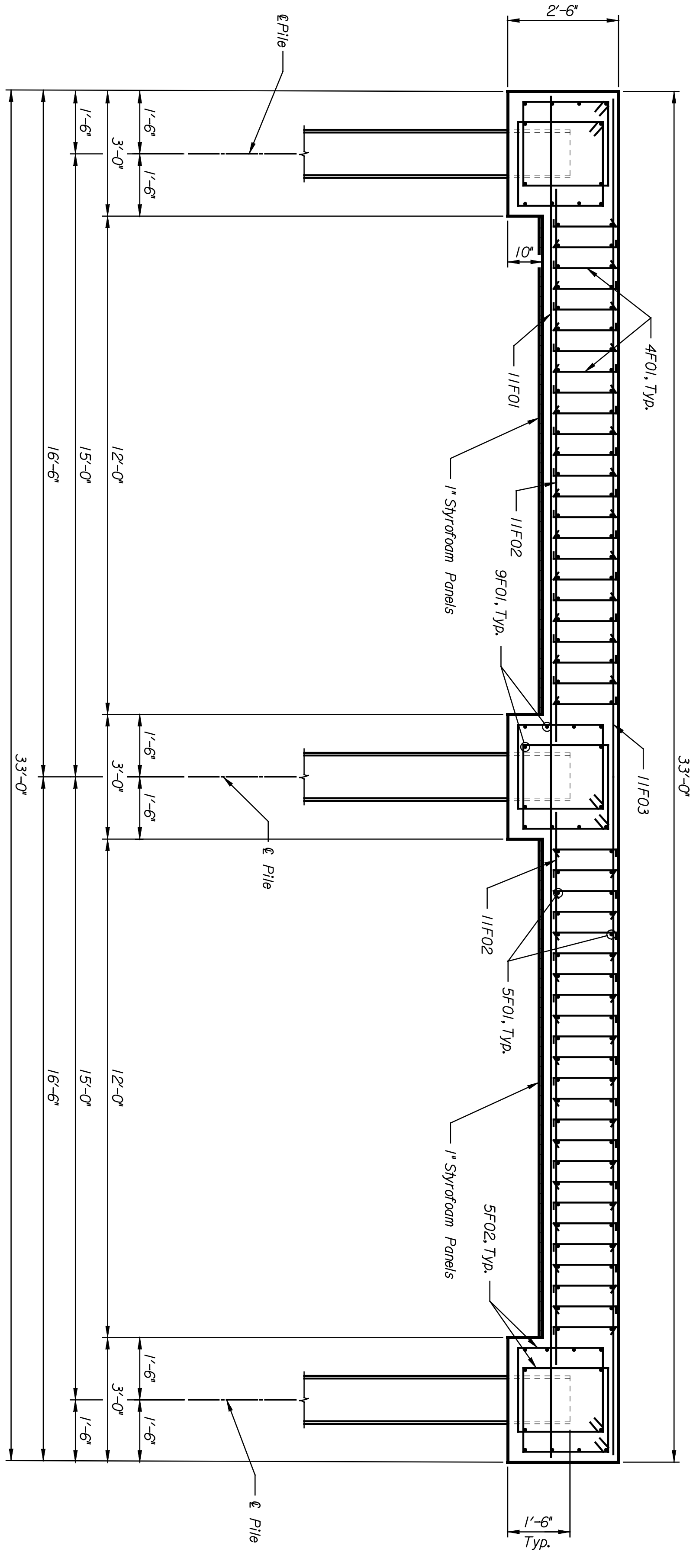
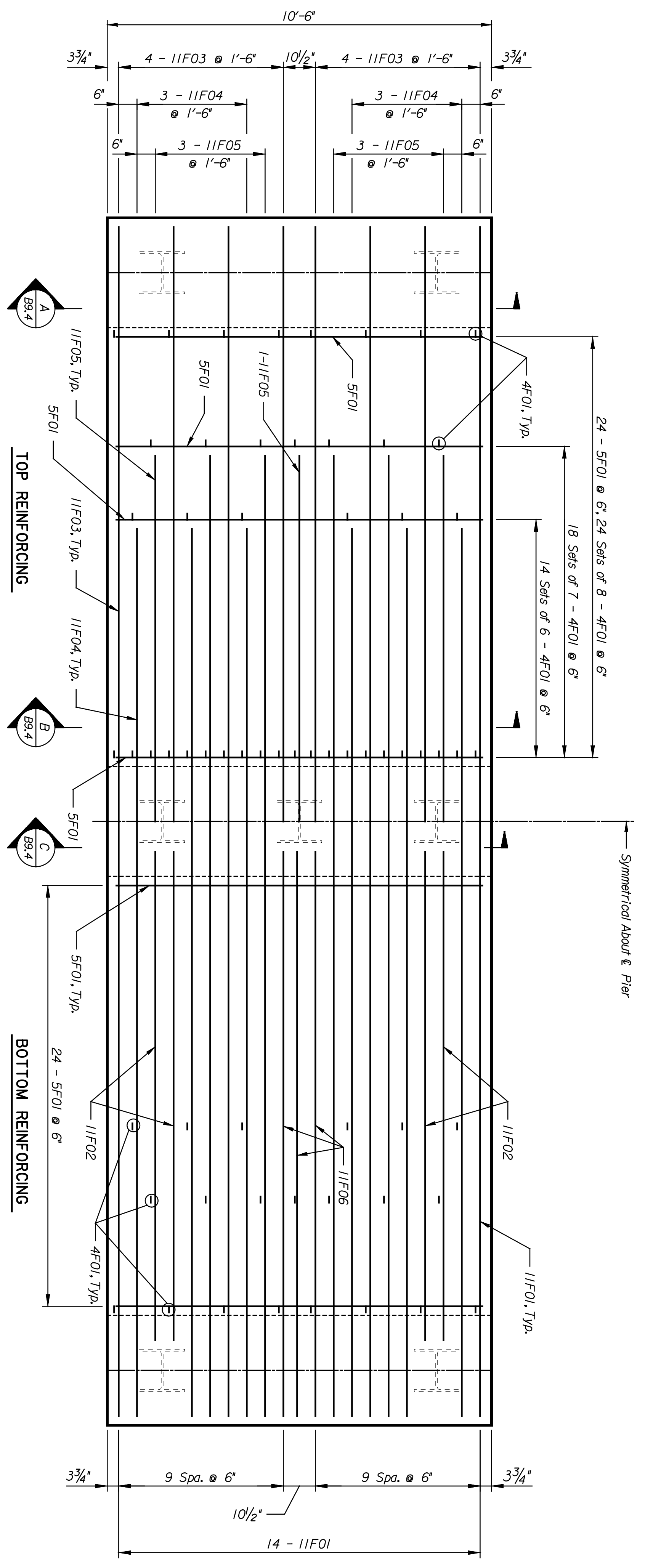


	BY	DATE

**PNTB**  
 ARCHITECTS ENGINEERS PLANNERS

This sheet designed by:



STATE	PROJECT NO.	YEAR	SHEET NO.	TOTAL SHEETS
KANSAS	472-84071	2005	B9.3	

**NOTES:**  
 All concrete shall be Grade 4.0 in accordance with the specifications, with  $f'_c=4000$  psi.  
 All reinforcing steel shall conform to ASTM A615, Grade 60.  
 All epoxy-coated reinforcing shall conform to ASTM A775.  
 All reinforcing shall be epoxy-coated.  
 Exposed concrete edges shall be chamfered 3/4", unless noted otherwise.

SHEET NO.		SCALE AS NOTED		APP'D.	
DESIGNED BY	CHKD BY	DETAILED BY	QUANTITIES BY	TRACED BY	DULY CHECKED BY
DMH	DMH	DMH	DMH	DMH	DMH

**CITY OF WICHITA**  
 11 TH STREET  
 UTILITY PROTECTION DETAILS

NO.	DATE	REVISIONS	BY	APP'D.
1				
2				
3				