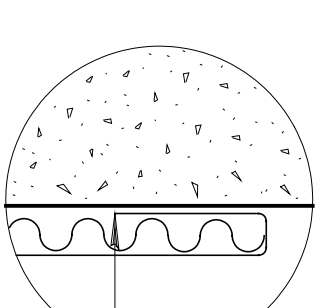
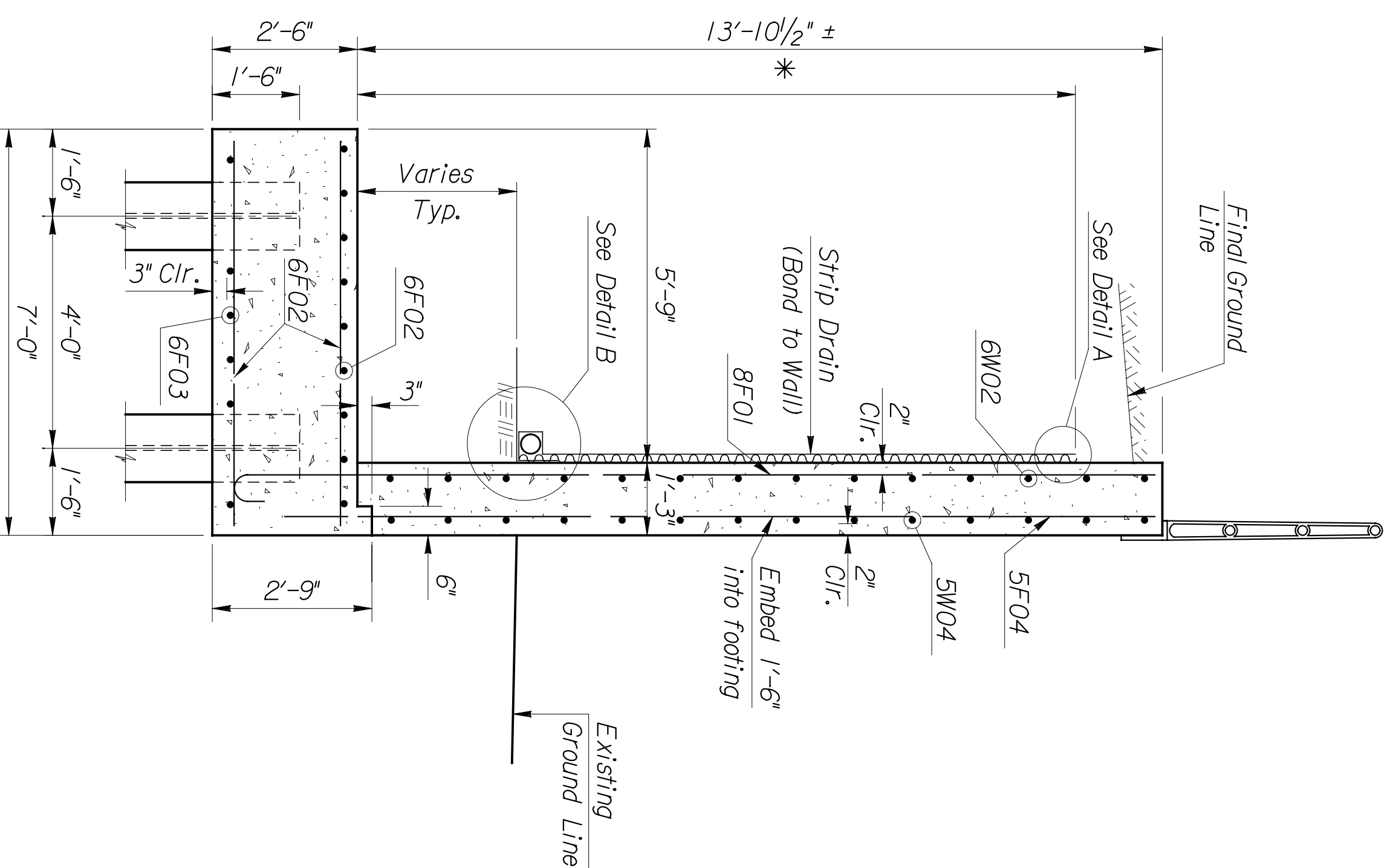
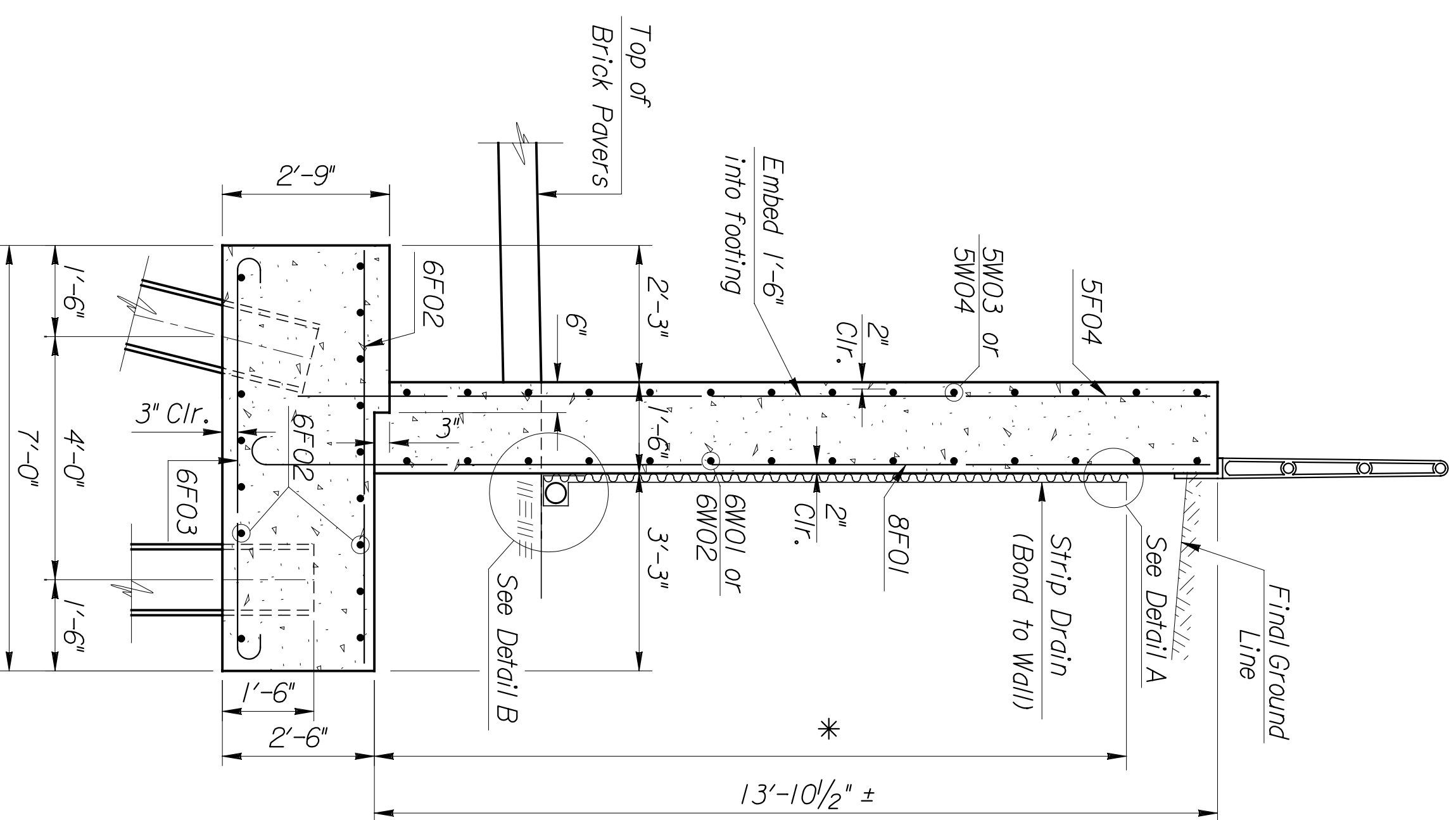
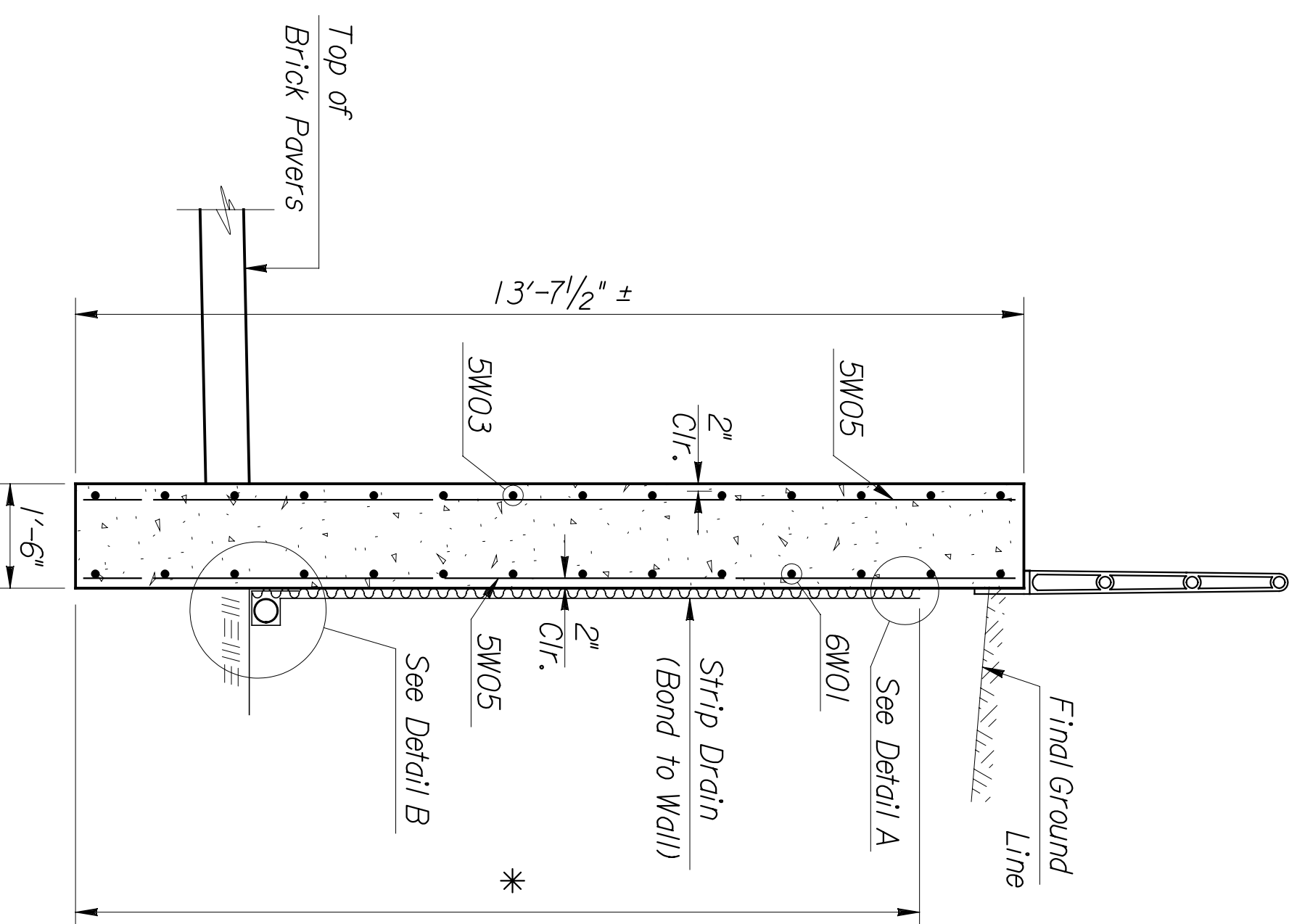


STATE	PROJECT NO.	YEAR	SHEET NO.	TOTAL SHEETS
KANSAS	472-94071	2005	W4.9	

Note: Top of wall elevations and wall heights are approximate. The Contractor shall match the top of 2nd St. Wall (NE) elevation with top of wall elevation of existing retaining wall.

DATE	BY

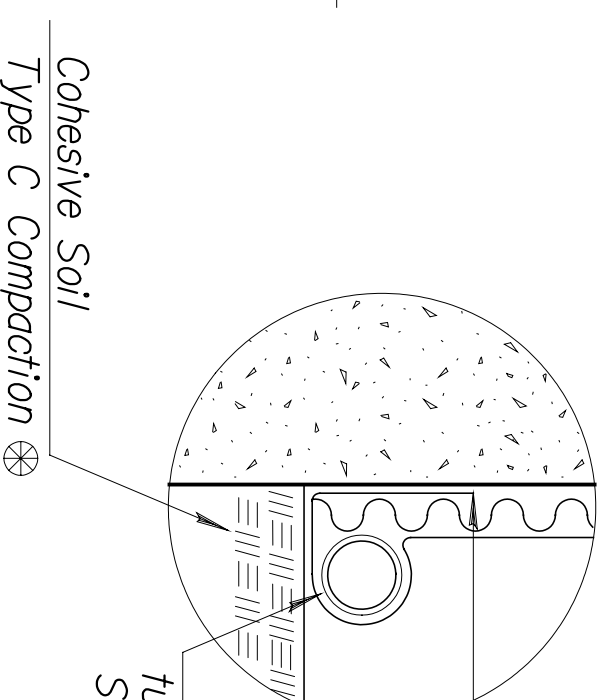
Plotted on: Tuesday January 04, 2005 09:17 AM  
 MHayes Plot Queue: \\cbswi00\KC029049-PS  
 Plot Scale: 0.083333:1:000000 Pen Table: \\ovpw00\Jobs\29049\Bridge\Cadd\Library\Plotpen\Fullsize.pen  
 Design Filename: \\ovpw00\Jobs\29049\Bridge\Cadd\Details\2nd\_st\_NE\Sections.dgn



Extend filter fabric backing and lap a minimum of 6"

⊗ Subsidiary to the Abutment Strip Drain

DETAIL A  
No Scale



Extend filter fabric backing and lap a minimum of 6" ⊗  
 4" Ø Polyethylene Perforated tubing (corrugated) Slope to Drain (1% grade minimum)

DETAIL B  
No Scale

Note:  
 For location of Sections C-C, D-D, and E-E see Sheet W4.8.

\* Limits of Bridge Backwall Protection System

This sheet designed by:



ARCHITECTS ENGINEERS PLANNERS

SHEET NO.		OF	SCALE	APP'D.	DESIGNED	BY	SCALE	APP'D.	TRACED
1			DETAILED		CHK		DETAIL		CHK
2									
NO.		DATE	REVISIONS	BY	APP'D.				
<b>CITY OF WICHITA</b>									
<b>WICHITA CENTRAL CORRIDOR</b>									
<b>2ND STREET WALL (NE)</b>									
<b>TYPICAL SECTIONS</b>									