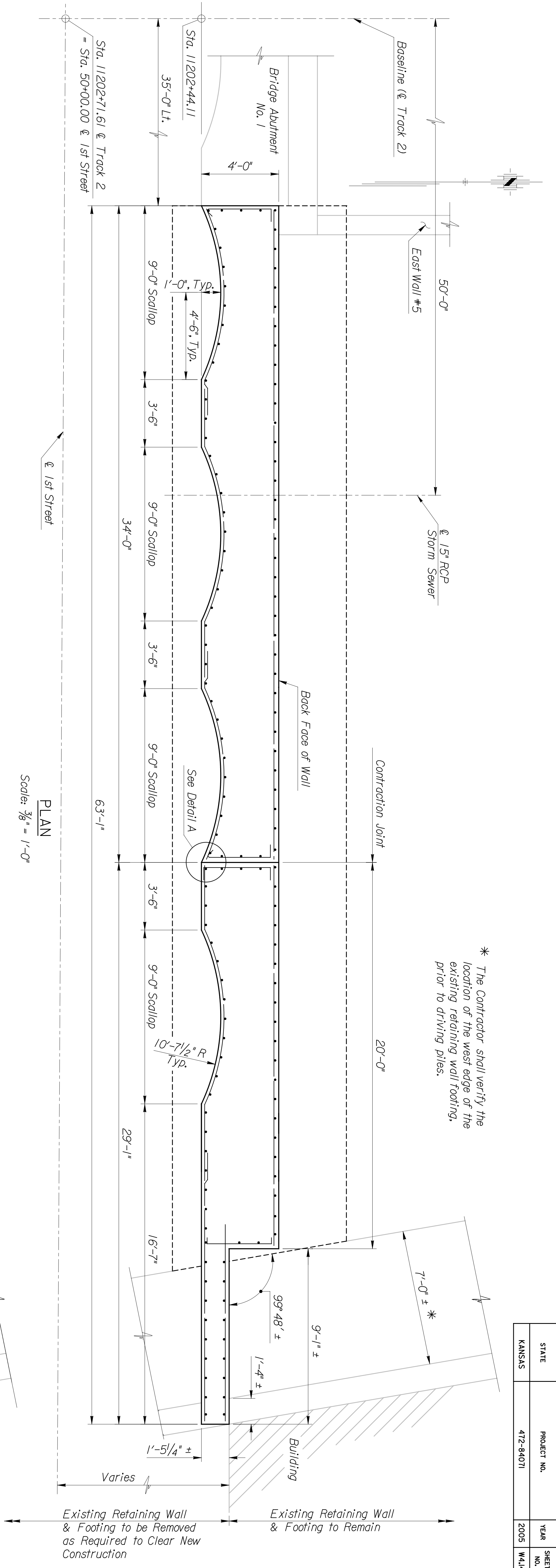


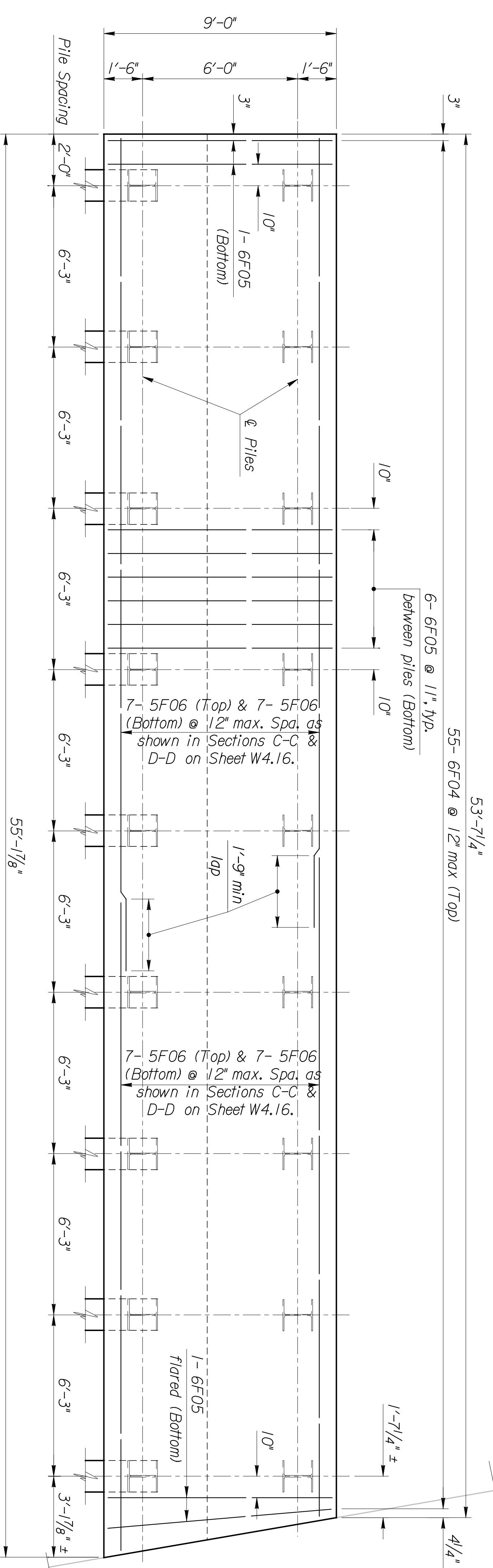
BY	DATE



* The Contractor shall verify the location of the west edge of the existing retaining wall footing prior to driving piles.

Existing Retaining Wall & Footing to be Removed as Required to Clear New Construction

Existing Retaining Wall & Footing to Remain



7- 5F06 (Top) & 7- 5F06 (Bottom) @ 12" max. Spa. as shown in Sections C-C & D-D on Sheet W4.16.

7- 5F06 (Top) & 7- 5F06 (Bottom) @ 12" max. Spa. as shown in Sections C-C & D-D on Sheet W4.16.

Note: For Detail A, see Sheet W4.16.

This sheet designed by:



ARCHITECTS ENGINEERS PLANNERS

FOOTING PLAN

Scale: 3/8" = 1'-0"

STATE	PROJECT NO.	YEAR	SHEET NO.	TOTAL SHEETS
KANSAS	472-94071	2005	W4.14	

CITY OF WICHITA				
WICHITA CENTRAL CORRIDOR				
1ST STREET WALL (NE)				
PLAN & FOOTING PLAN				
SHEET NO.	OF	SCALE	APPD.	TRACED
DESIGNED BY	CHKD.	DETAILS BY	CHKD.	TRACED BY
DESIGN CR.	CHKD.	QUANTITIES	CHKD.	TRACED CR.
REVISIONS				
NO.	DATE	BY	APPD.	
1				
2				