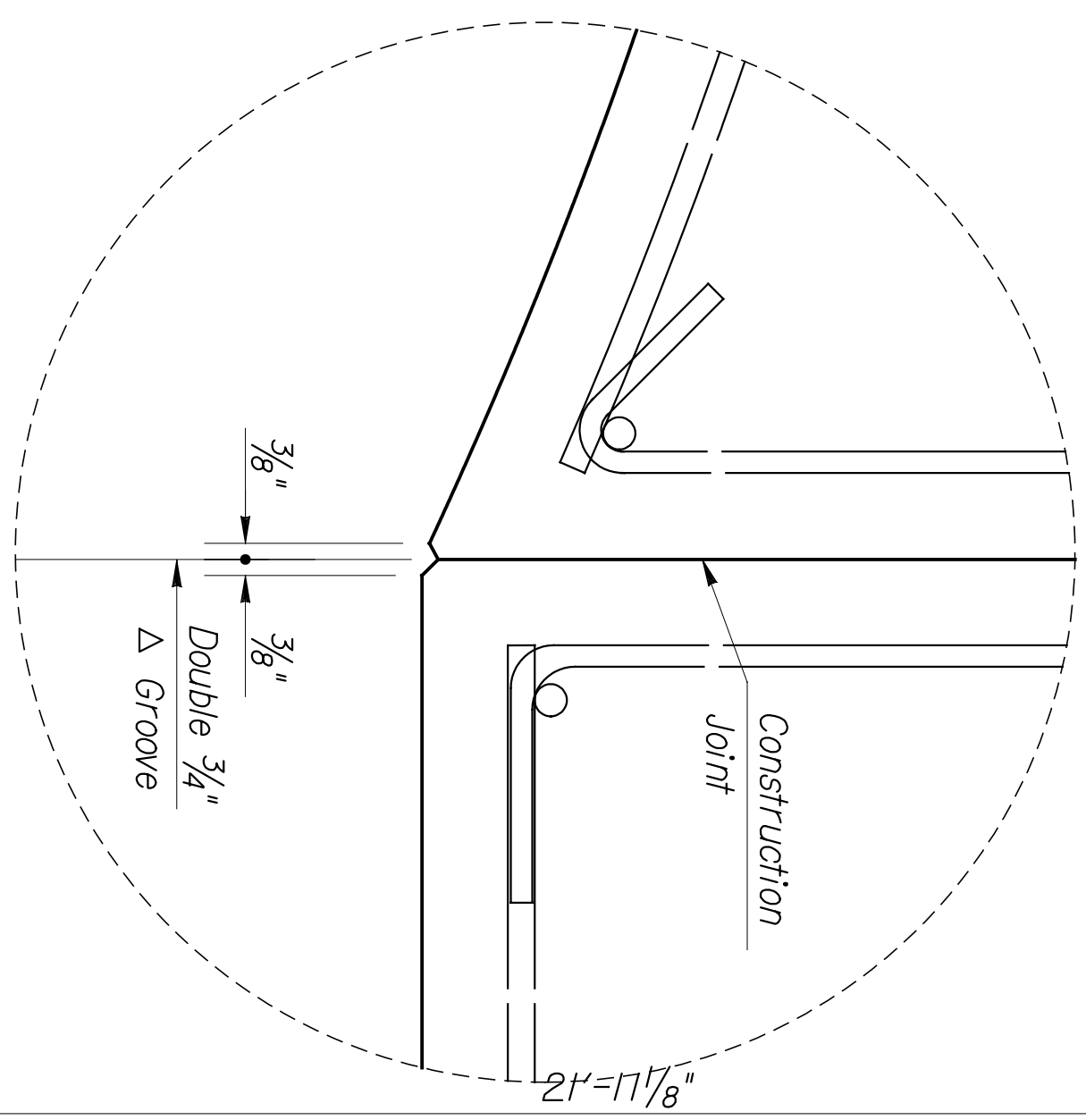
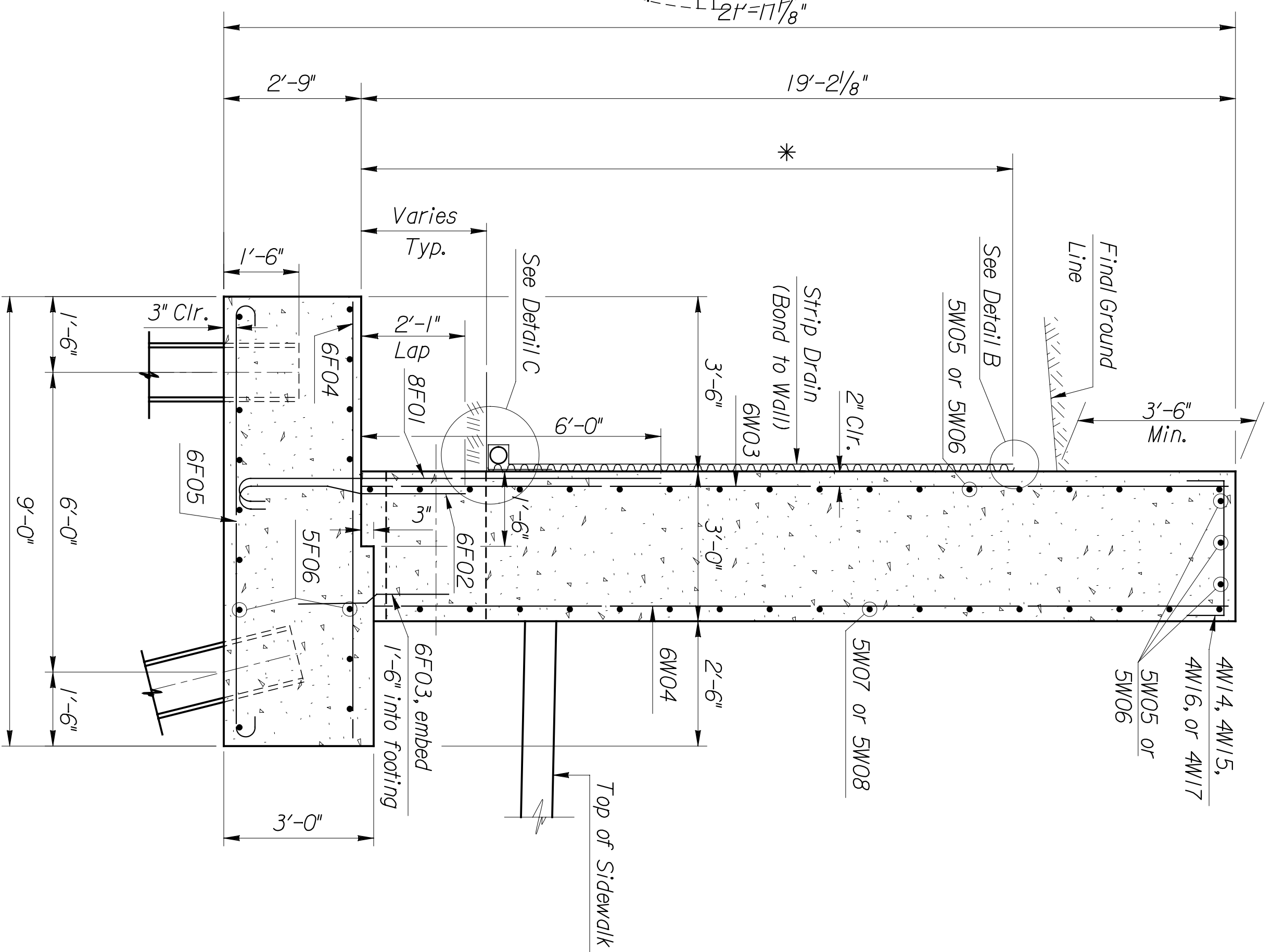


BY	DATE

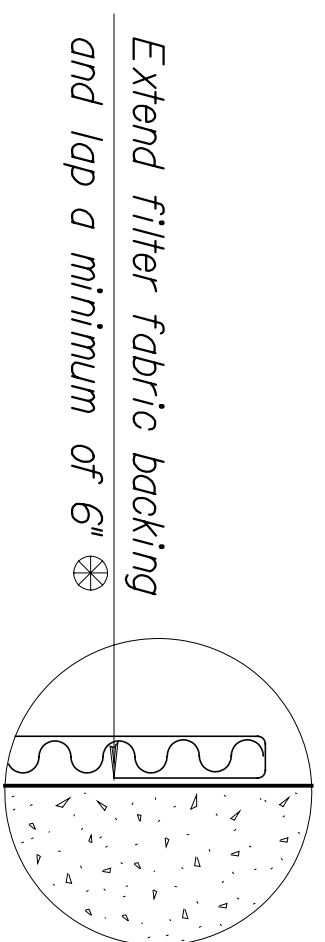
Plotted on: Tuesday January 04, 2005 09:18 AM  
 MHayes Plot Queue: \\cbswi00\KC029049-P5  
 Plot Scale: 0.0833334:0.000000 Pen Table: \\ovpw00\Jobs\29049\Bridge\Cadd\Library\Plotpen\Fullsize.pen  
 Design Filename: \\ovpw00\Jobs\29049\Bridge\Cadd\Details\1st\_sf\_NE\_sections.dgn



**DETAIL A**  
 Scale: 3" = 1'-0"



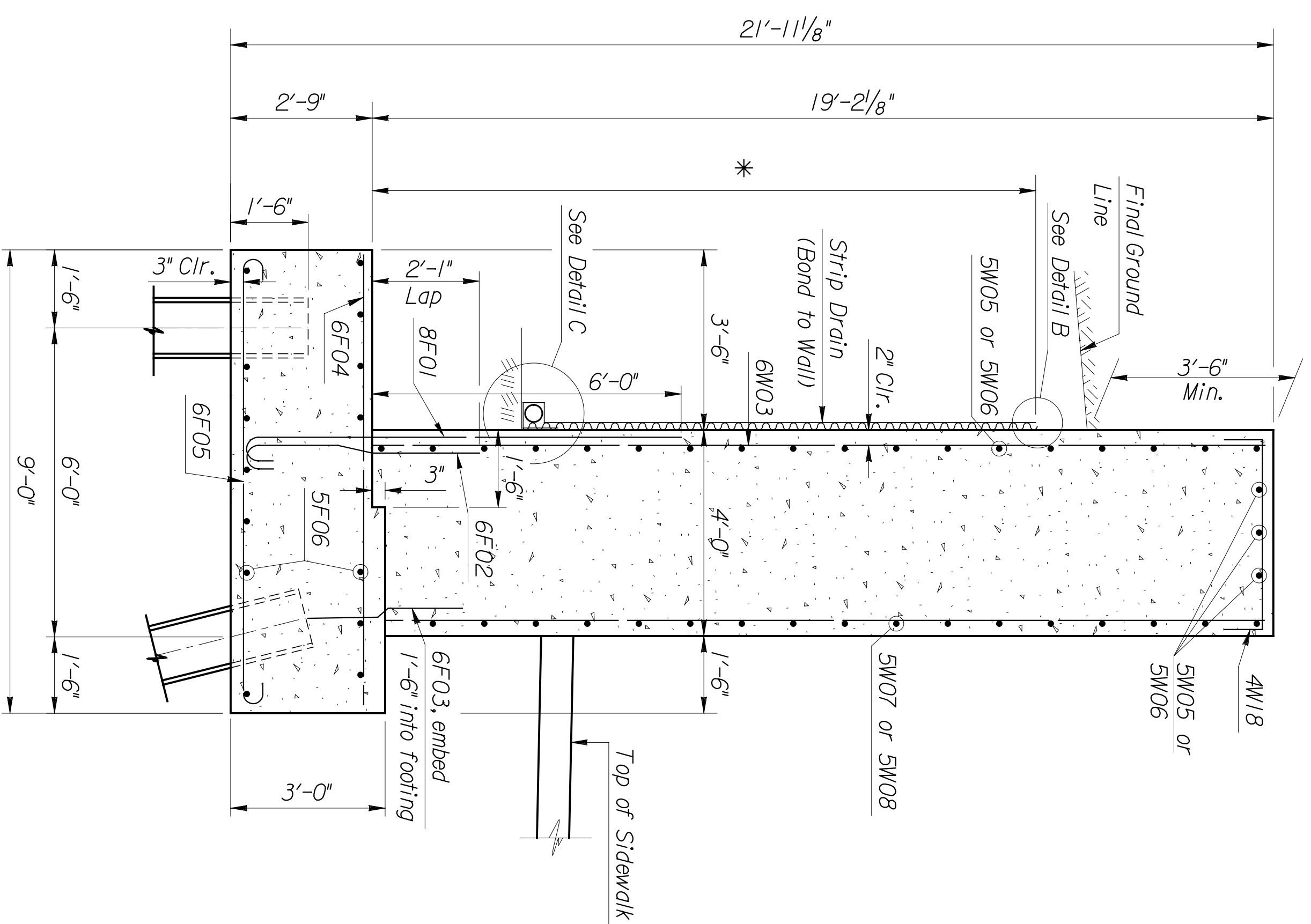
**SECTION C-C**  
 Scale: 1/2" = 1'-0"



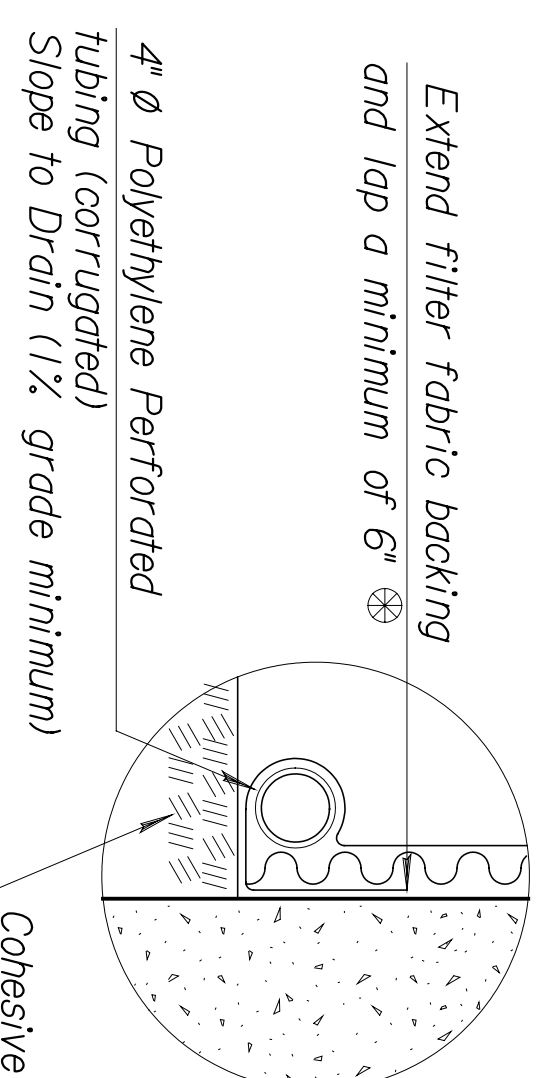
Extend filter fabric backing and lap a minimum of 6"

**DETAIL B**

No Scale



**SECTION D-D**  
 Scale: 1/2" = 1'-0"



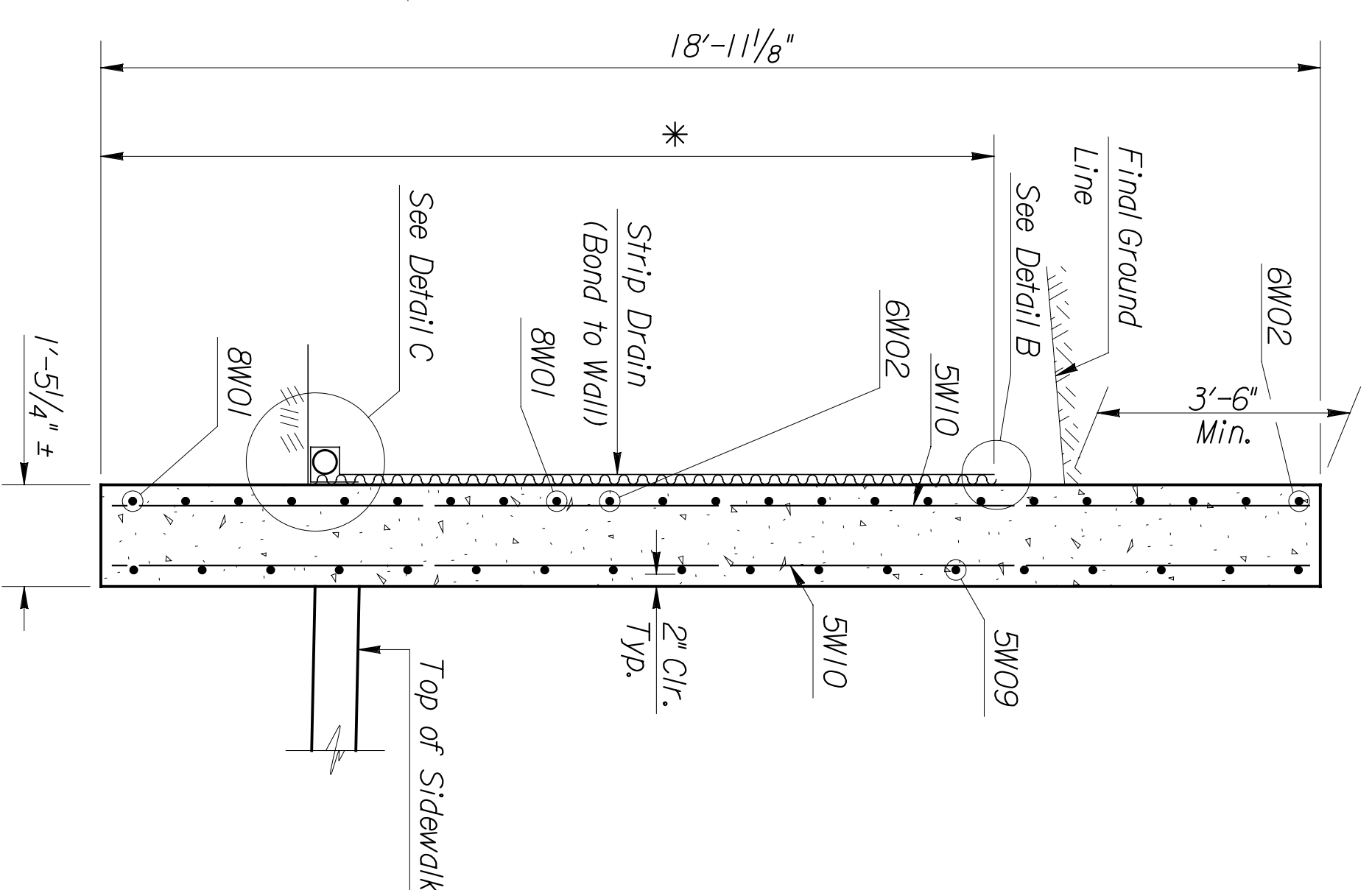
Extend filter fabric backing and lap a minimum of 6"

4" Ø Polyethylene Perforated Tubing (corrugated) Slope to Drain (1 1/2% grade minimum)

Type C Compaction

**DETAIL C**

No Scale



**SECTION E-E**  
 Scale: 1/2" = 1'-0"

**Note:**  
 For location of Detail A see Sheet W4.14,  
 For location of Sections C-C, D-D, and E-E  
 see Sheet W4.15.

\* Limits of Bridge Backwall Protection System

This sheet designed by:



ARCHITECTS ENGINEERS PLANNERS

STATE	PROJECT NO.	YEAR	SHEET NO.	TOTAL SHEETS
KANSAS	472-94071	2005	W4.16	

SHEET NO.		OF	SCALE	APP'D.	TRACED
DESIGNED BY	CHK'D	DETAILS	QUANTITIES	DATE	BY
<b>CITY OF WICHITA</b>					
<b>WICHITA CENTRAL CORRIDOR</b>					
1ST STREET WALL (NE)					
TYPICAL SECTIONS					
REVISIONS					
NO.	DATE	BY	APP'D.		
1					
2					