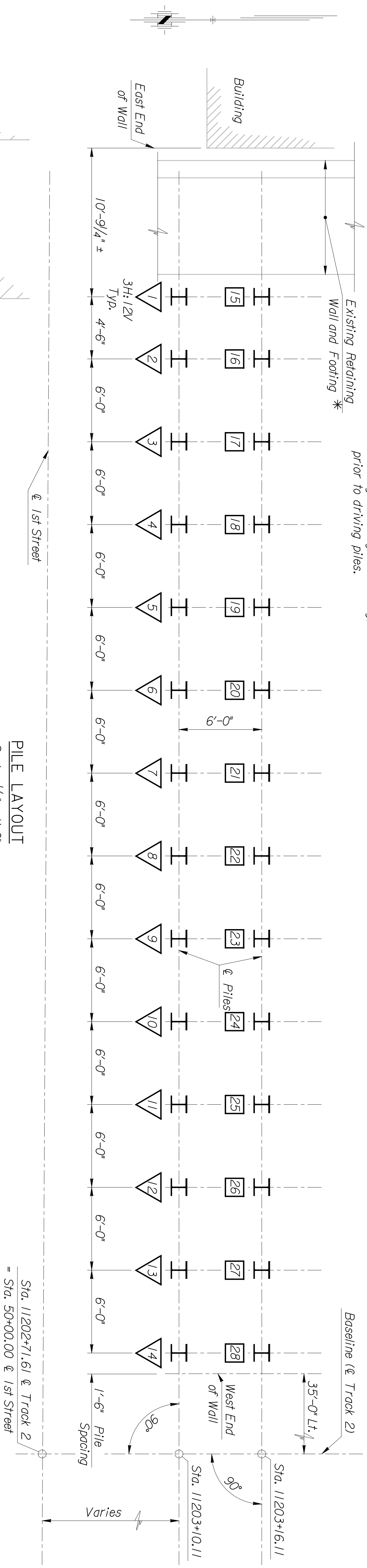
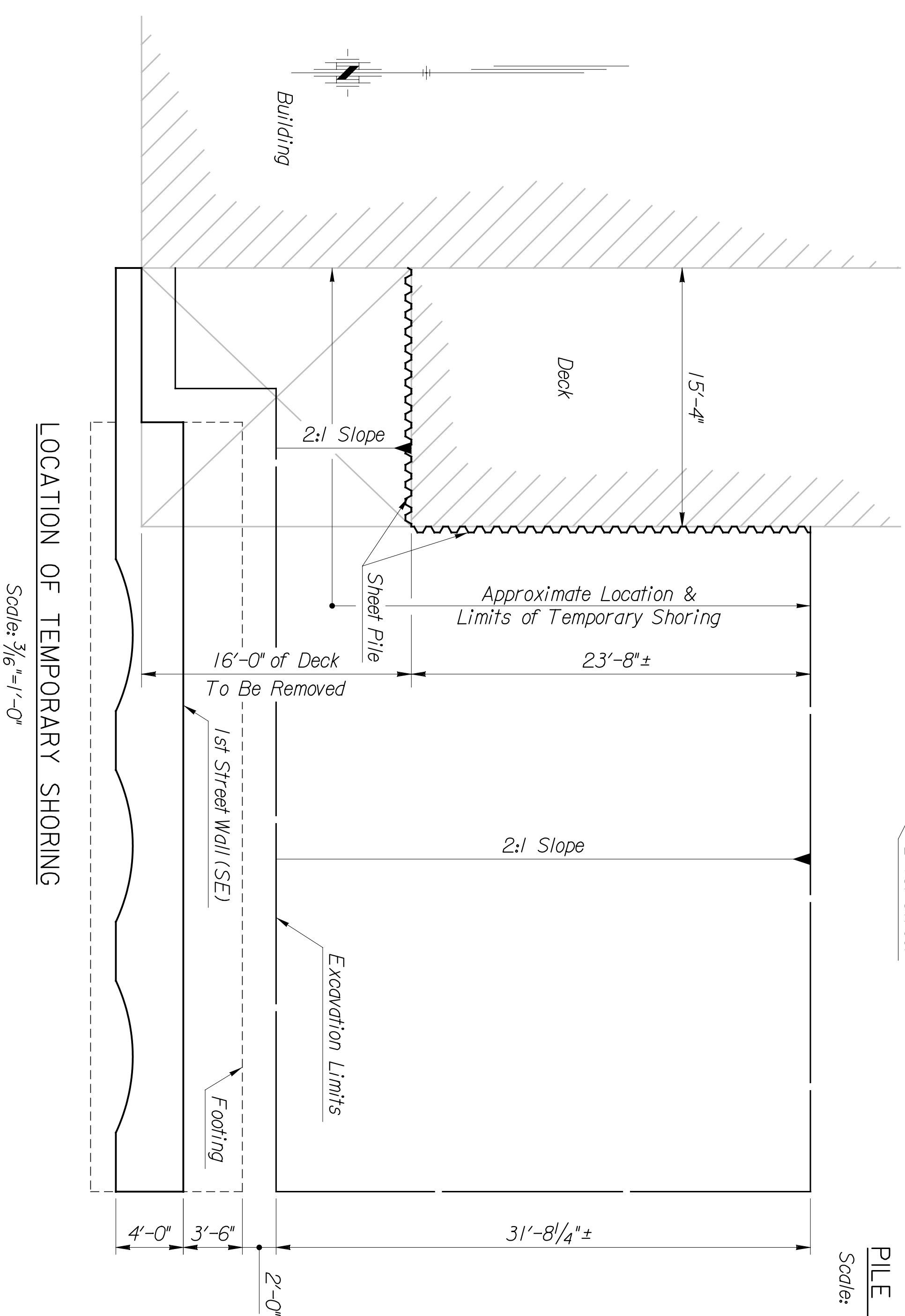


DATE	BY

* Note:
 The Contractor shall verify the location of the west edge of the existing retaining wall footing, prior to driving piles.

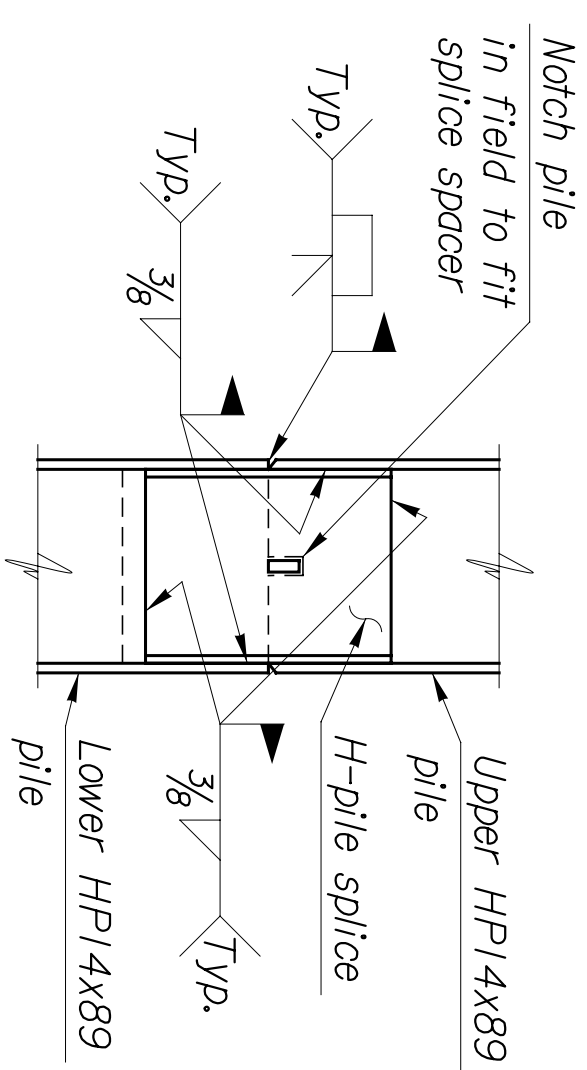


PILE LAYOUT
 Scale: 1/4" = 1'-0"

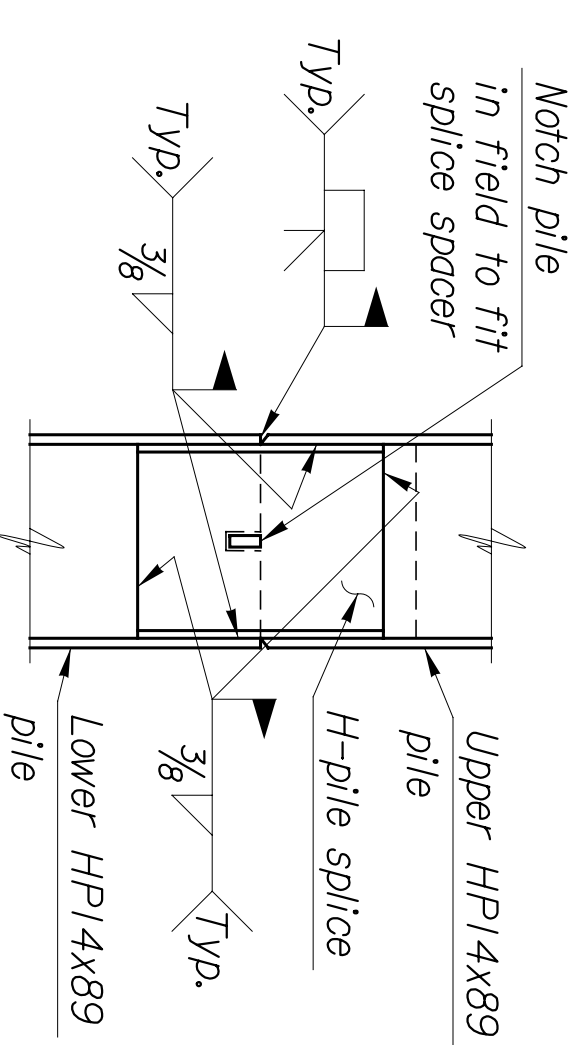


LOCATION OF TEMPORARY SHORING
 Scale: 3/16" = 1'-0"

PILE SPICE DETAIL
 Not to Scale



ALTERNATE PILE SPICE DETAIL
 Not to Scale



Sta. 11202+71.61 @ Track 2
 = Sta. 50+00.00 @ 1st Street

NOTES:
 Steel for piles shall conform to ASTM A709, Grade 50.
 Pile spacing is shown at bottom of footing.

Pile lengths shown on the plans are estimated pile lengths for bidding purposes. Actual pile order lengths will be provided following the completion of Dynamic Pile Analysis at the 1st Street Bridge site.

Piles shall be driven to penetrate into the Wellington Shale Formation. Drive all piles to the minimum tip elevation and driving criteria determined from the Dynamic Pile Analysis performed on the test piles as outlined in the specifications. Final tip elevations will be established by the Engineer, based on meeting the driving criteria.

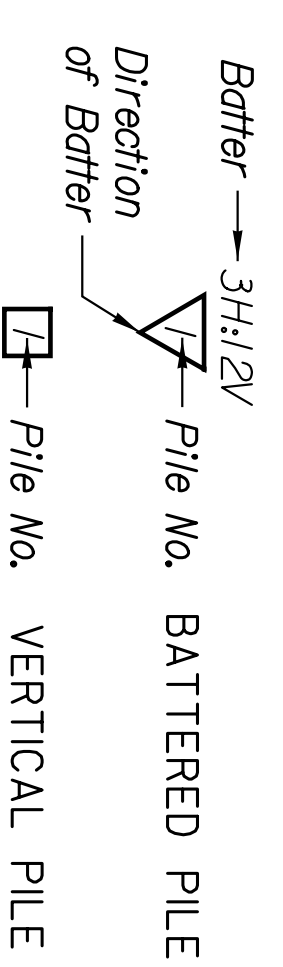
Driving shall stop when in the opinion of the Engineer additional driving may damage the pile. At any locations where problems are experienced, pile damage is suspected, or apparent refusal occurs significantly above the minimum tip elevation, the Engineer may request that additional Dynamic Pile Analysis be performed.

Excavations may encounter contaminated groundwater and/or soils. City of Wichita requirements for handling contaminated materials shall be followed.

A vibration monitoring program shall be required per the specifications in conjunction with the performance of pile driving and other construction activities.

PILE DATA						
PILE NO.	PILE TYPE	BOTTOM OF FOOTING (FT.)	PILE CUT-OFF ELEV. (FT.)	ESTIMATE PILE TIP ELEV. (FT.)	PILE LENGTH (FT.)	DESIGN PILE BEARING (TONS/PILE)
1-14	HP14x89	1293.16	1294.66	1213.66	84	94.3
15-28	HP14x89	1293.16	1294.66	1246.66	48	40.0

LEGEND



SHEET NO. OF		SCALE		APPD.	
DESIGNED BY	AS	DETAILED BY	AS	QUANTITIES BY	TRACED BY
DESIGN CR.	CR	DETAIL CR.	CR	QUANT. CR.	TRACE CR.

NO.		REVISIONS	
1	DATE	BY	APPD.
2			

CITY OF WICHITA	
WICHITA CENTRAL CORRIDOR	
1ST STREET WALL (SE)	
FOUNDATION LAYOUT	

This sheet designed by:
ENTEB
 ARCHITECTS ENGINEERS PLANNERS

STATE	PROJECT NO.	YEAR	SHEET NO.	TOTAL SHEETS
KANSAS	472-94071	2005	W4.17	