

BY	DATE

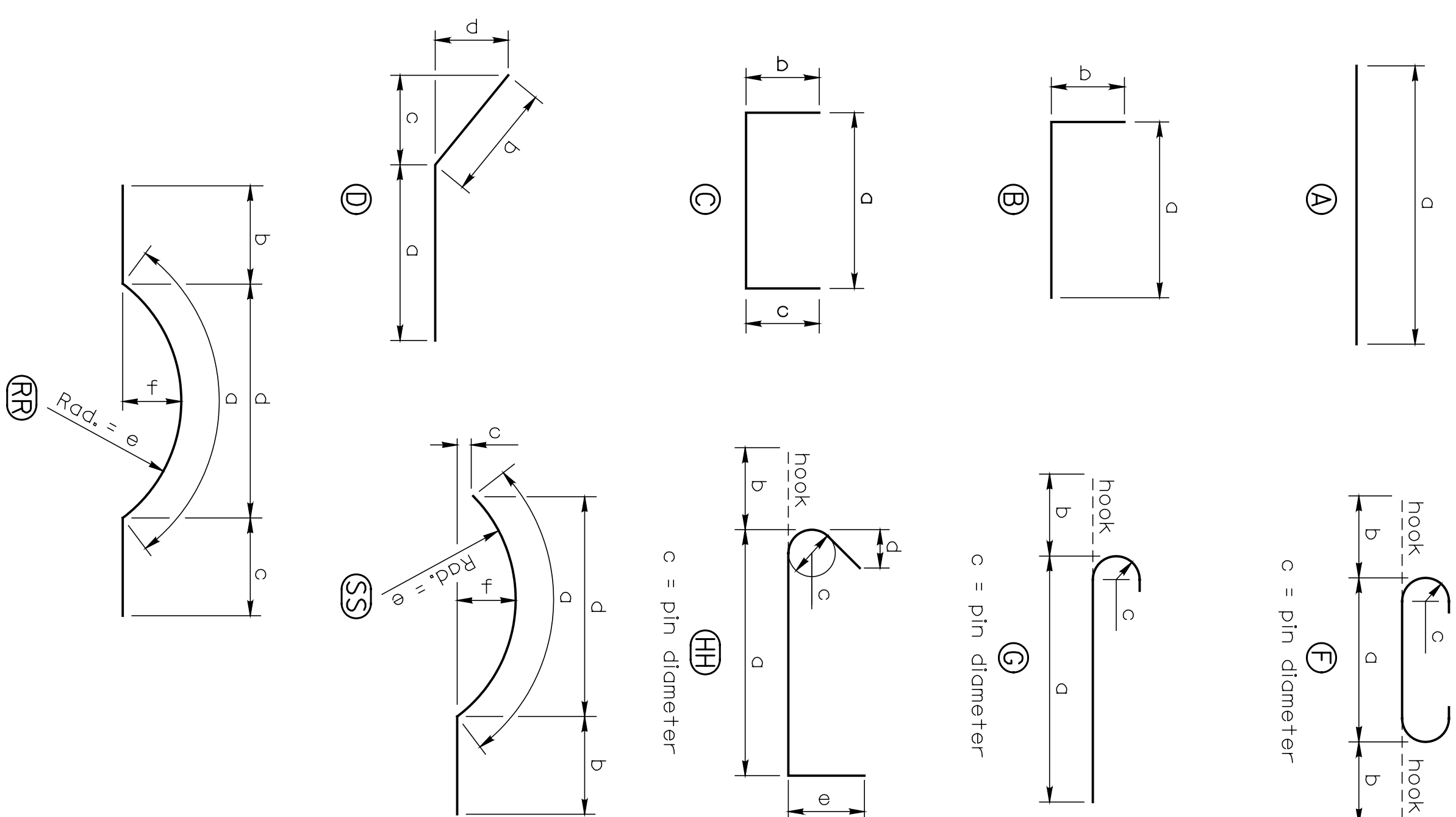
Plotted on: Tuesday January 04, 2005 09:19 AM
 MHayes Plot Queue: \\cbsw100\KC029049-PS
 Plot Scale: 0.0833334:000000 Pen Table: \\ovpw00\Jobs\29049\Brdge\Cadd\Library\plotpen\Fullsize.pen
 Design Filename: \\ovpw00\Jobs\29049\Brdge\Cadd\Details\2nd.&.lst_barlist.dgn

LOC.	DESIGN MARK	BENDING MARK	SIZE	NO.	LENGTH	DIMENSIONS					
						d	b	c	d	e	f
2ND STREET WALL (NE)						2ND STREET WALL (SE)					
FOOTING BARS						WALL BARS					
F01	G	A	8	9	16'-10"	15'-11"	11"	6"			
F02	A	A	6	24	6'-8"	6'-8"					
F03	F	F	6	6	8'-0"	6'-8"	8"	4 1/2"			
F04	A	A	5	9	15'-0"	15'-0"					
FOOTING BARS						WALL BARS					
W01	A	A	6	15	8'-7"	8'-7"					
W02	B	B	6	15	5'-8"	3'-4"	2'-4"				
W03	A	A	5	15	8'-9"	8'-9"					
W04	B	B	5	15	7'-6"	4'-5"	3'-1"				
W05	A	A	5	14	13'-3"	13'-3"					
FOOTING BARS						WALL BARS					
F01	G	A	8	6	7'-5"	6'-6"	11"	6"			
F02	F	F	8	6	10'-6"	8'-8"	11"	6"			
*F03	A	A	6	7	3'-0"	3'-0"					
F04	A	A	6	7	8'-8"	8'-8"					
F05	G	G	6	7	5'-3"	4'-7"	8"	4 1/2"			
F06	A	A	5	14	6'-2"	6'-2"					
F07	C	C	5	6	4'-0"	2'-4"	10"	10"			
FOOTING BARS						WALL BARS					
W01	D	D	8	3	7'-8"	2'-10"	4'-10"	4'-7"	1'-6"		
W02	D	D	6	16	7'-8"	2'-10"	4'-10"	4'-7"	1'-6"		
W03	A	A	6	7	18'-4"	18'-4"					
*W04	A	A	6	13	18'-1"	18'-1"					
W05	A	A	5	22	6'-2"	6'-2"					
*W06	SS	SS	5	19	12'-6"	9'-2"	3'-4"	1"	8'-10 1/2"	10'-9 3/4"	1'-0"
W07	A	A	5	10	17'-11"	17'-11"					
W08	C	C	4	2	3'-7"	2'-7"	6"	6"			
W09	C	C	4	1	3'-9"	2'-9"	6"	6"			
W10	C	C	4	1	3'-11"	2'-11"	6"	6"			
W11	C	C	4	1	4'-2"	3'-2"	6"	6"			
*W12	HH	HH	4	19	4'-4"	3'-5 1/2"	4 1/2"	2"	3"	6"	
W13	C	C	4	4	3'-5"	2'-5"	6"	6"			
F01	G	G	8	54	9'-5"	8'-6"	11"	6"			
F02	G	G	6	54	5'-3"	4'-7"					
*F03	A	A	6	56	3'-0"	3'-0"					
F04	A	A	6	55	8'-8"	8'-8"					
F05	F	F	6	52	10'-0"	8'-8"	8"	4 1/2"			
F06	A	A	5	28	28'-4"	28'-4"					

*Denotes the reinforcing bars to be epoxy coated (front face of walls).

LOC.	DESIGN MARK	BENDING MARK	SIZE	NO.	LENGTH	DIMENSIONS					
						d	b	c	d	e	f
IST STREET WALL (NE), CONT.						IST STREET WALL (SE)					
WALL BARS						FOOTING BARS					
W01	A	A	8	12	12'-0"	12'-0"					
W02	A	A	6	14	11'-0"	11'-0"					
W03	A	A	6	80	16'-10"	16'-10"					
*W04	A	A	6	82	16'-7"	16'-7"					
W05	A	A	5	20	20'-3"	20'-3"					
W06	A	A	5	20	24'-8"	24'-8"					
W07	A	A	5	20	33'-8"	33'-8"					
*W08	SS	SS	5	51	11'-1"	9'-2"	1'-11"	1"	8'-10 1/2"	10'-9 3/4"	1'-0"
*W09	RR	RR	5	51	16'-0"	9'-5"	3'-3 1/2"	3'-3 1/2"	9'-1"	10'-9 3/4"	1'-0"
*W10	A	A	5	17	15'-6"	15'-6"					
W11	A	A	5	17	16'-7"	16'-7"					
*W12	A	A	5	18	16'-5"	16'-5"					
W13	C	C	4	12	3'-7"	2'-7"	6"	6"			
W14	C	C	4	12	3'-9"	2'-9"	6"	6"			
W15	C	C	4	12	3'-11"	2'-11"	6"	6"			
W16	C	C	4	12	4'-2"	3'-2"	6"	6"			
*W17	C	C	4	77	4'-7"	3'-7"	6"	6"			
*W18	HH	HH	4	40	4'-4"	3'-5 1/2"	4 1/2"	2"	3"	6"	
*W19	HH	HH	4	40	4'-4"	3'-5 1/2"	4 1/2"	2"	3"	6"	
F01	G	G	8	79	7'-5"	6'-6"	11"	6"			
F02	G	G	6	80	5'-3"	4'-7"	8"	4 1/2"			
*F03	A	A	6	82	3'-0"	3'-0"					
F04	A	A	6	80	8'-8"	8'-8"					
F05	F	F	6	80	10'-0"	8'-8"	8"	4 1/2"			
F06	A	A	5	28	40'-6"	40'-6"					

STATE	PROJECT NO.	YEAR	SHEET NO.	TOTAL SHEETS
KANSAS	472-94071	2005	W4.23	



Notes:
 (A) denotes bending mark. Dimensions are out to out, unless noted otherwise.
 No allowance for bend curvature is to be made except for standard hook and radii in excess of some.

ENTR
 ARCHITECTS ENGINEERS PLANNERS

CITY OF WICHITA			
WICHITA CENTRAL CORRIDOR			
2ND STREET WALL (NE), 2ND STREET WALL (SE),			
1ST STREET WALL (NE), & 1ST STREET WALL (SE)			
REINFORCING BAR DETAILS			
SHEET NO.	OF	SCALE	APPD.
DESIGNED BY	ASG	DETAILED BY	ASG
DESIGN CK.	CNT	DETAIL CK.	CNT
NO.	DATE	REVISIONS	BY
1			
2			