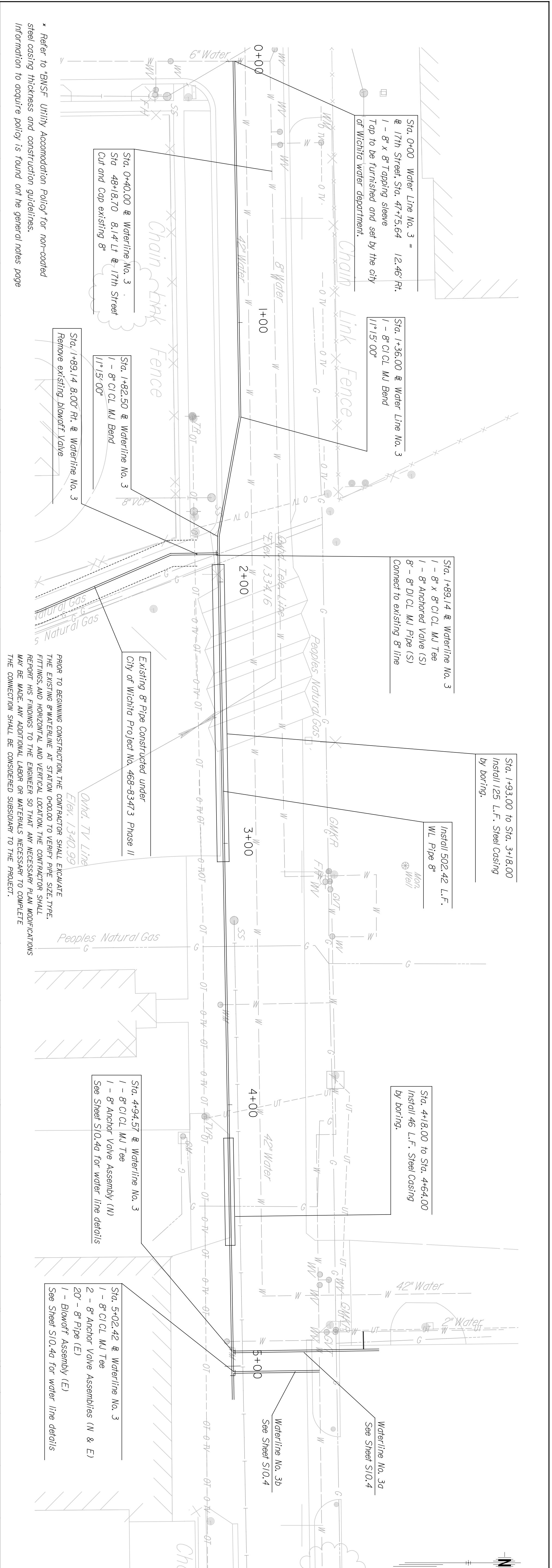
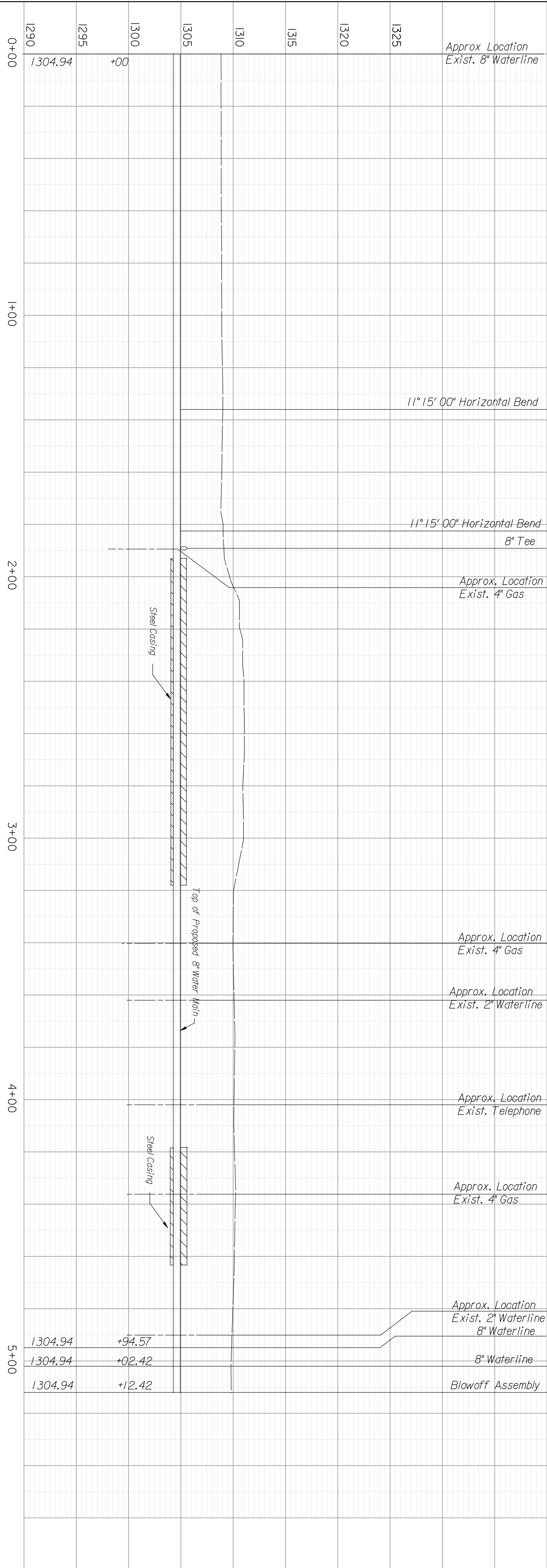


BY	DATE



\* Refer to BNSF Utility Accommodation Policy for non-coated steel casing thickness and construction guidelines. Information to acquire policy is found on the general notes page

PRIOR TO BEGINNING CONSTRUCTION, THE CONTRACTOR SHALL EXCAVATE THE EXISTING 8\"/>

SHEET NO. S10.4	<b>HNTB</b>		ARCHITECTS ENGINEERS PLANNERS	
	Designed By	AWD	Job No.	29049
	Drawn By	AWD	Date	January 30, 2004

CITY OF WICHITA, KANSAS  
 CENTRAL RAIL CORRIDOR  
 WATERLINE NO. 3  
 17TH STREET  
 CITY OF WICHITA PROJECT NO. 468-83473