

PLAN	CHECKED	CHECKED
BY		
DATE		

PROFILE	CHECKED	CHECKED
BY		
DATE		

DSNR: MDK OPER: JLM SCALE: 1"=20.00
 Q:\1999\99189\004\water\Phase 2\510_6_water_15th rev 09-15-2003 09:54:03 am

@ 15th St., Sta. 50+59.50, 21.21' Rt.=
 WL 4, Sta. 0+00.00
 Existing Fire Hydrant Assembly*
 Remove 8" CI MJ Plug and begin
 new 8" Water Main installation.
 1- 8" CI CL PE x MJ 11 1/4° Bend (Vert.)

@ 15th St., Sta. 50+85.50, 21.23' Rt.=
 WL 4, Sta. 0+10.00
 1- 8" CI CL MJ 11 1/4° Bend (Vert.)
 Defl.= 11° 40' 57"

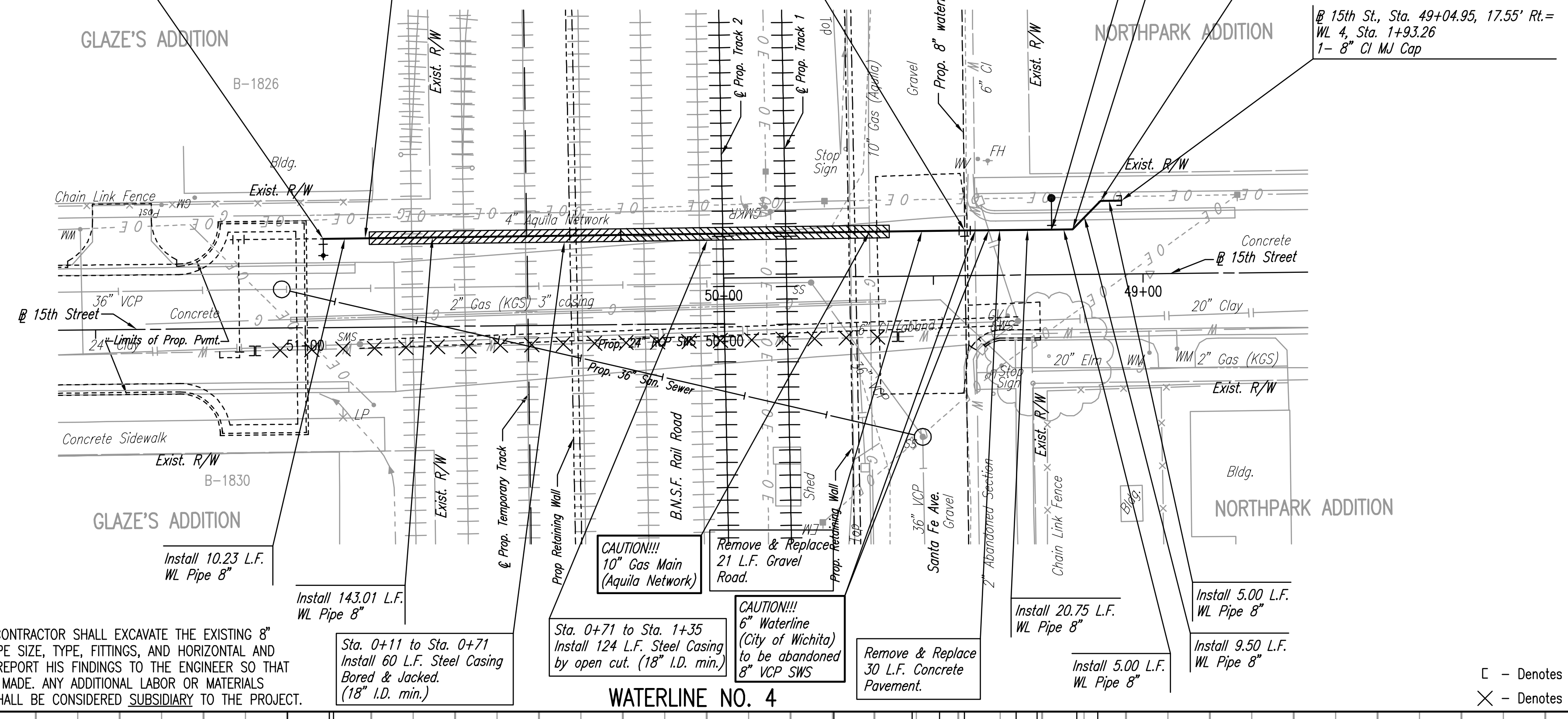
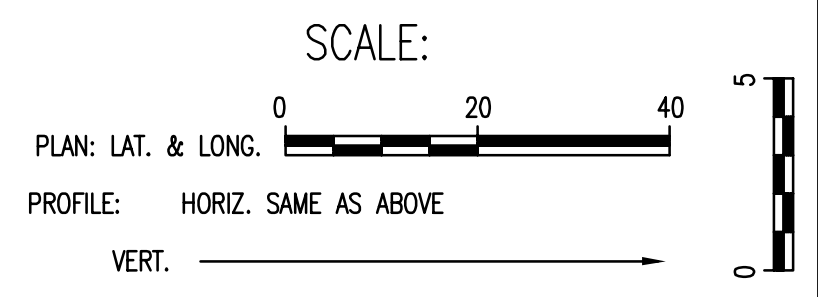
@ 15th St., Sta. 49+42.40, 10.73' Rt.=
 WL 4, Sta. 1+53.01
 Connect to 8" Gate Valves (E & W)
 1- 8" CI CL PE x MJ 11 1/4° Bend (Vert.) (W)
 Defl.= 8° 25' 42"

@ 15th St., Sta. 49+21.65, 10.79' Rt.=
 WL 4, Sta. 1+73.76
 1- Fire Hydrant Assembly
 L= 7.5'
 Top Valve Box EL= 1306.2
 FH Bury Line EL= 1306.8
 1- 8" CI CL PE x MJ 11 1/4° Bend (Vert.) (E)
 Defl.= 8° 46' 41"

@ 15th St., Sta. 49+16.65, 10.80' Rt.=
 WL 4, Sta. 1+78.76
 1- 8" CI CL MJ 45° Bend
 Defl.= 45° 00' 00"

@ 15th St., Sta. 49+09.95, 17.53' Rt.=
 WL 4, Sta. 1+88.26
 1- 8" CI CL MJ 45° Bend
 Defl.= 45° 00' 00"

@ 15th St., Sta. 49+04.95, 17.55' Rt.=
 WL 4, Sta. 1+93.26
 1- 8" CI MJ Cap

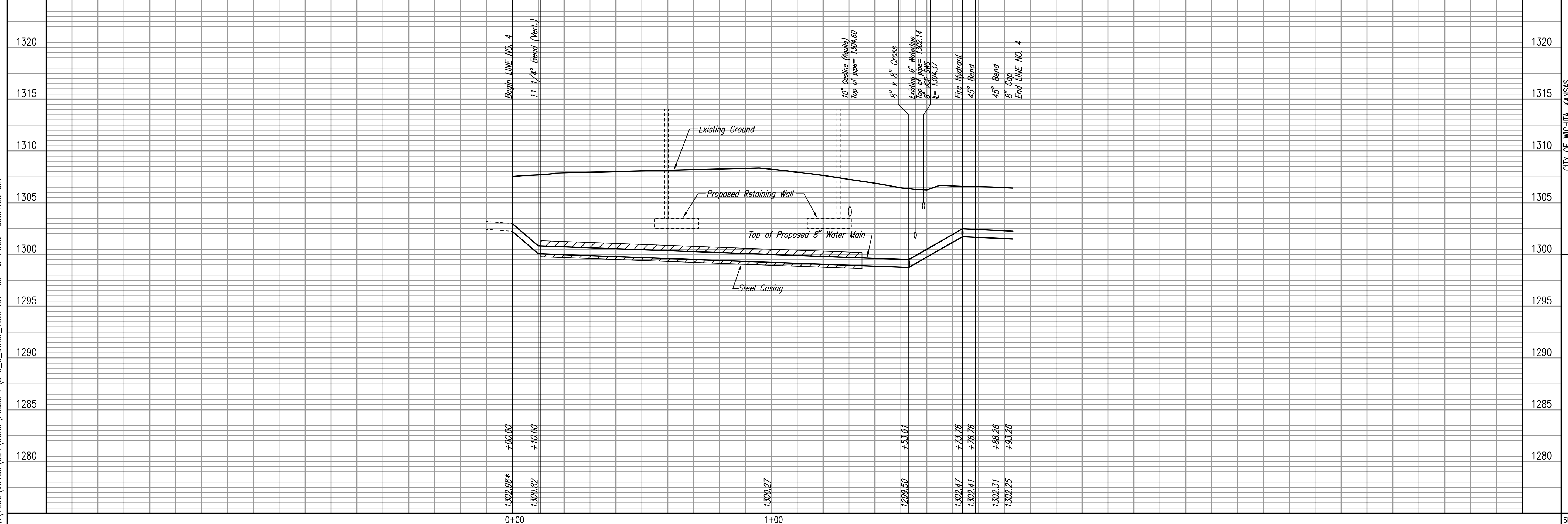


* PRIOR TO BEGINNING CONSTRUCTION, THE CONTRACTOR SHALL EXCAVATE THE EXISTING 8" WATERLINE AT STATION 0+00.00 TO VERIFY PIPE SIZE, TYPE, FITTINGS, AND HORIZONTAL AND VERTICAL LOCATION. THE CONTRACTOR SHALL REPORT HIS FINDINGS TO THE ENGINEER SO THAT ANY NECESSARY PLAN MODIFICATIONS MAY BE MADE. ANY ADDITIONAL LABOR OR MATERIALS NECESSARY TO COMPLETE THE CONNECTION SHALL BE CONSIDERED SUBSIDIARY TO THE PROJECT.

Unless noted otherwise, elevations shown are top of pipe

WATERLINE NO. 4

□ - Denotes Caps or Plugs to be Installed
 X - Denotes Waterline to be Abandoned.



CITY OF WICHITA, KANSAS
 NEIL D. CABLE, P.E. - CITY ENGINEER
 CENTRAL RAIL CORRIDOR

WATERLINE NO. 4
 15TH STREET

CITY OF WICHITA PROJECT NO. 472-84071

Professional Engineering Consultants, P.A.
 303 S. TOPEKA • WICHITA, KANSAS 67202
 316-262-2691 • FAX 316-262-3003

Designed By: MDK
 Drawn By: GJR, JLM
 Job No.: 34-99189-4
 Date: September, 2002

Sheet S10.6 of