

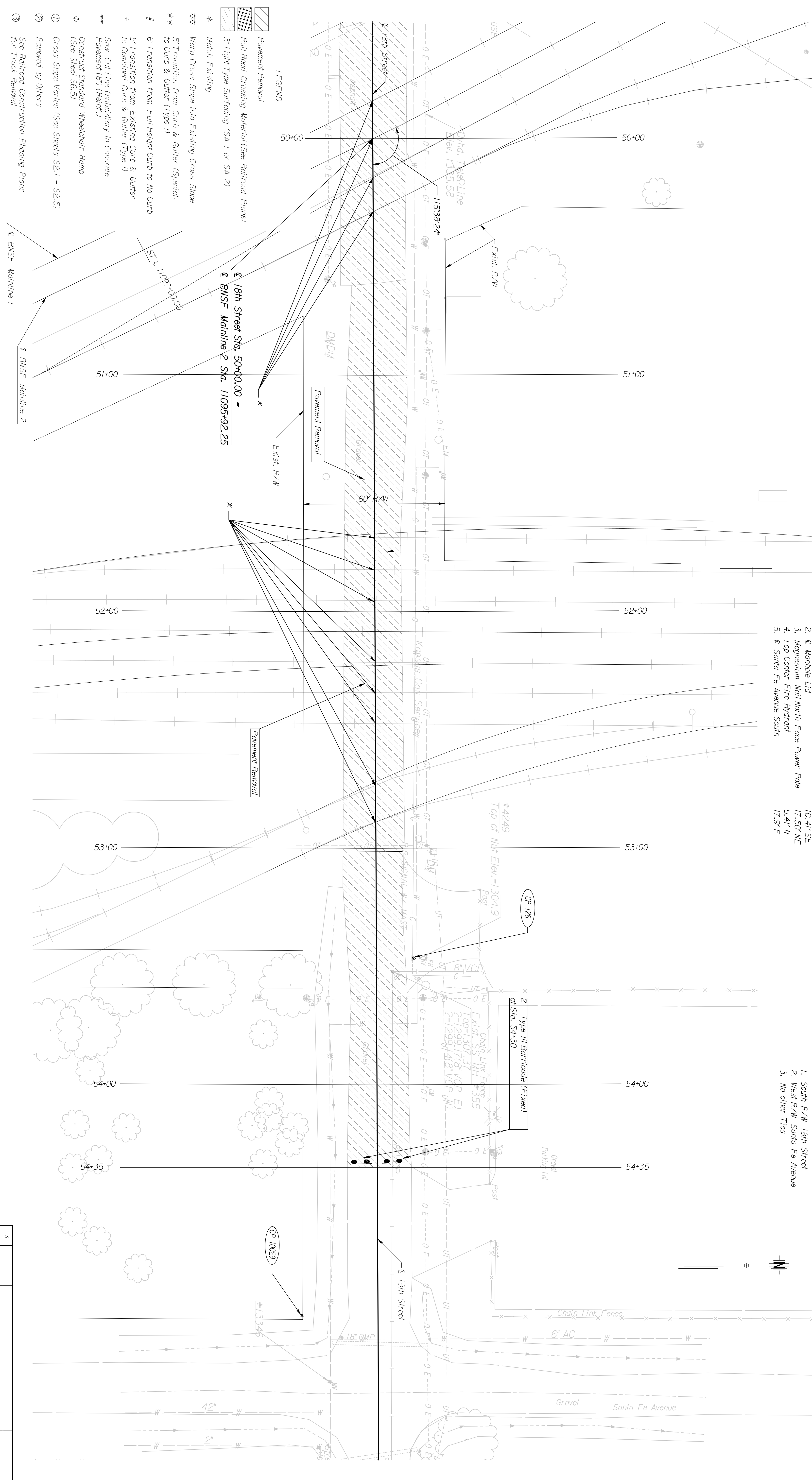
BY	DATE

Plotted on: Wednesday January 05, 2005 11:07 AM
 adayahoff Plot Queue: \\cbsw100\K029049-PS
 Plot Scale: 20,000000:1,000000 Pen Table: \\ovp00\Jobs\29049\Highway\Library\lplotpen\half.pen
 Design Filename: J:\29049\CD\plan\wc_pi018b.dgn

- LEGEND**
- Pavement Removal
 - Rail Road Crossing Material (See Railroad Plans)
 - 3" Light Type Surfacing (SA-1 or SA-2)
 - * Match Existing
 - ✱ Warp Cross Slope into Existing Cross Slope
 - ✱✱ Transition from Curb & Gutter (Special) to Curb & Gutter (Type 1)
 - # 6" Transition from Full Height Curb to No Curb
 - # 5" Transition from Existing Curb & Gutter to Combined Curb & Gutter (Type 1)
 - ## Saw Cut Line (Subsidiary to Concrete Pavement) (S7) (Heint.)
 - ## Construct Standard Wheelchair Ramp (See Sheet S6.5)
 - ∅ Cross Slope Varies (See Sheets S2.1 - S2.5)
 - ② Removed by Others
 - ③ See Railroad Construction Phasing Plans for Track Removal
 - ④ For Manhole Adjustment, contact Dave Langley at SPC (Phone: 316-268-2008) From Elev. 1301.18 to Elev. 1300.06

This sheet designed by:

CH2M
 ARCHITECTS ENGINEERS PLANNERS

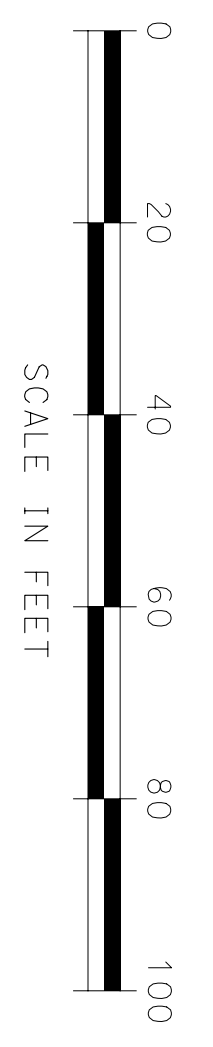


CP 126 Sta. 53+46.5 Off. 15.56 Lt.
 Set #4 Bar of Point
 N 1697161.183 E 1650710.7434
 1. E Traveled Way 18th Street
 2. E Manhole Lid
 3. Magnesium Nail North Face Power Pole
 4. Top Center Fire Hydrant
 5. E Santa Fe Avenue South

14.3' S
 10.41' SE
 17.50' NE
 5.41' N
 17.9' E

CP 10029 Sta. 54+97.23 Off. 32.13 Rt.
 Found 1/6" Iron Pin of Point
 N 169716.6884 E 1650862.4687
 1. South R/W 18th Street
 2. West R/W Santa Fe Avenue
 3. No other Ties

* Existing railroad crossing posts to be removed in coordination with Railroad phasing



STATE	KANSAS	PROJECT NO.	472-84071	YEAR	2005	SHEET NO.	53.2	TOTAL SHEETS	
CITY OF WICHITA 18TH STREET PLAN		DESIGNED	AWD	SCALE	AS SHOWN	APP'D.			
		DESIGN GR.	LCW	DETAILED	DCM	QUANTITIES			
CITY OF WICHITA 18TH STREET PLAN		NO.	1	DATE		BY		APPR.	
		NO.	2	DATE		BY		APPR.	
CITY OF WICHITA 18TH STREET PLAN		NO.	3	DATE		BY		APPR.	
		NO.	4	DATE		BY		APPR.	