

FHWA REGION NO.	STATE	PROJECT NO.	YEAR	SHEET NO.	TOTAL SHEETS
7	KANSAS	472-84071	2005	S3.4	

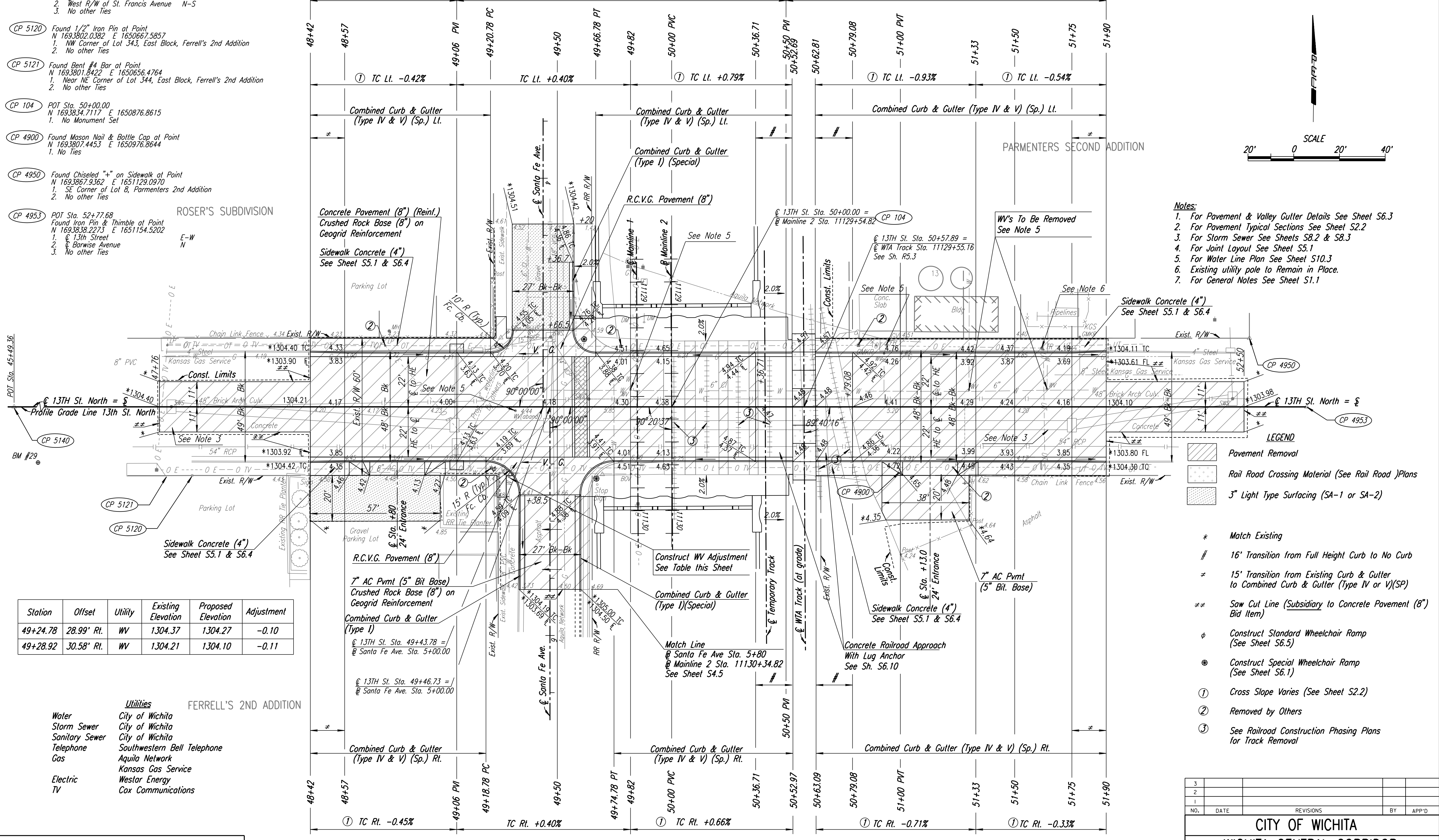
SW 1/4, Sec. 9, T27S, R1E

100' VC @
PVI ELEV=1304.58 @

- CP 5140 POT Sta. 45+49.36
Found Iron Pin in Thimble at Point
N 1693829.0064 E 1650426.2598
1. @ 13th Street
2. West R/W of St. Francis Avenue
3. No other Ties
- CP 5120 Found 1/2" Iron Pin at Point
N 1693802.0382 E 1650667.5857
1. NW Corner of Lot 343, East Block, Ferrell's 2nd Addition
2. No other Ties
- CP 5121 Found Bent #4 Bar at Point
N 1693801.8422 E 1650656.4764
1. Near NE Corner of Lot 344, East Block, Ferrell's 2nd Addition
2. No other Ties
- CP 104 POT Sta. 50+00.00
N 1693834.7117 E 1650876.8615
1. No Monument Set
- CP 4900 Found Mason Nail & Bottle Cap at Point
N 1693807.4453 E 1650976.8644
1. No Ties
- CP 4950 Found Chiseled "+" on Sidewalk at Point
W 1693867.9362 E 1651129.0970
1. SE Corner of Lot 8, Parmenters 2nd Addition
2. No other Ties
- CP 4953 POT Sta. 52+77.68
Found Iron Pin & Thimble at Point
W 1693832.2273 E 1651154.5202
1. @ 13th Street
2. @ Barwise Avenue
3. No other Ties

DATE	BY

No VC -0.36% @ No VC +0.40% @ 100' VC @
PVI ELEV=1304.58 @ -0.34% @ No VC



- Notes:**
- For Pavement & Valley Gutter Details See Sheet S6.3
 - For Pavement Typical Sections See Sheet S2.2
 - For Storm Sewer See Sheets S8.2 & S8.3
 - For Joint Layout See Sheet S5.1
 - For Water Line Plan See Sheet S10.3
 - Existing utility pole to Remain in Place.
 - For General Notes See Sheet S1.1



- LEGEND**
- Pavement Removal
 - Rail Road Crossing Material (See Rail Road Plans)
 - 3" Light Type Surfacing (SA-1 or SA-2)
 - * Match Existing
 - # 16' Transition from Full Height Curb to No Curb
 - = 15' Transition from Existing Curb & Gutter to Combined Curb & Gutter (Type IV or V)(SP)
 - ≠ Saw Cut Line (Subsidiary to Concrete Pavement (8") Bid Item)
 - φ Construct Standard Wheelchair Ramp (See Sheet S6.5)
 - ⊗ Construct Special Wheelchair Ramp (See Sheet S6.1)
 - ① Cross Slope Varies (See Sheet S2.2)
 - ② Removed by Others
 - ③ See Railroad Construction Phasing Plans for Track Removal

Station	Offset	Utility	Existing Elevation	Proposed Elevation	Adjustment
49+24.78	28.99' Rt.	WV	1304.37	1304.27	-0.10
49+28.92	30.58' Rt.	WV	1304.21	1304.10	-0.11

Utilities

Water	City of Wichita
Storm Sewer	City of Wichita
Sanitary Sewer	City of Wichita
Telephone	Southwestern Bell Telephone
Gas	Aquila Network
	Kansas Gas Service
Electric	Westar Energy
TV	Cox Communications

This sheet designed by:

Professional Engineering Consultants, P.A.
303 S. TOPEKA • WICHITA, KANSAS 67202
316-262-2691 • FAX 316-262-3003

BM #29 = Sta. 47+19.99, 24.36' Rt
Chiseled "+" on Top of South Curb of 13th Street, 120' East of @ of St. Francis Avenue
Elevation=1304.71

NW 1/4, Sec. 16, T27S, R1E

BM #28 = Sta. 53+07.14, 24.42' Lt
Chiseled "+" on East End of Curb Return, Northeast Corner of 13th Street & Barwise Avenue
Elevation=1303.96

3				
2				
1				
NO.	DATE	REVISIONS	BY	APP'D
CITY OF WICHITA				
WICHITA CENTRAL CORRIDOR				
13TH STREET				
PLAN				
SHEET NO.	SCALE	1"=20'	APP'D	
DESIGNED	RWM	DETAILED	SVB	QUANTITIES
DESIGN CK.	DETAL CK.	QUAN. CK.	TRACED	TRACE CK.