

BY	DATE

**PNTB**  
 ARCHITECTS ENGINEERS PLANNERS

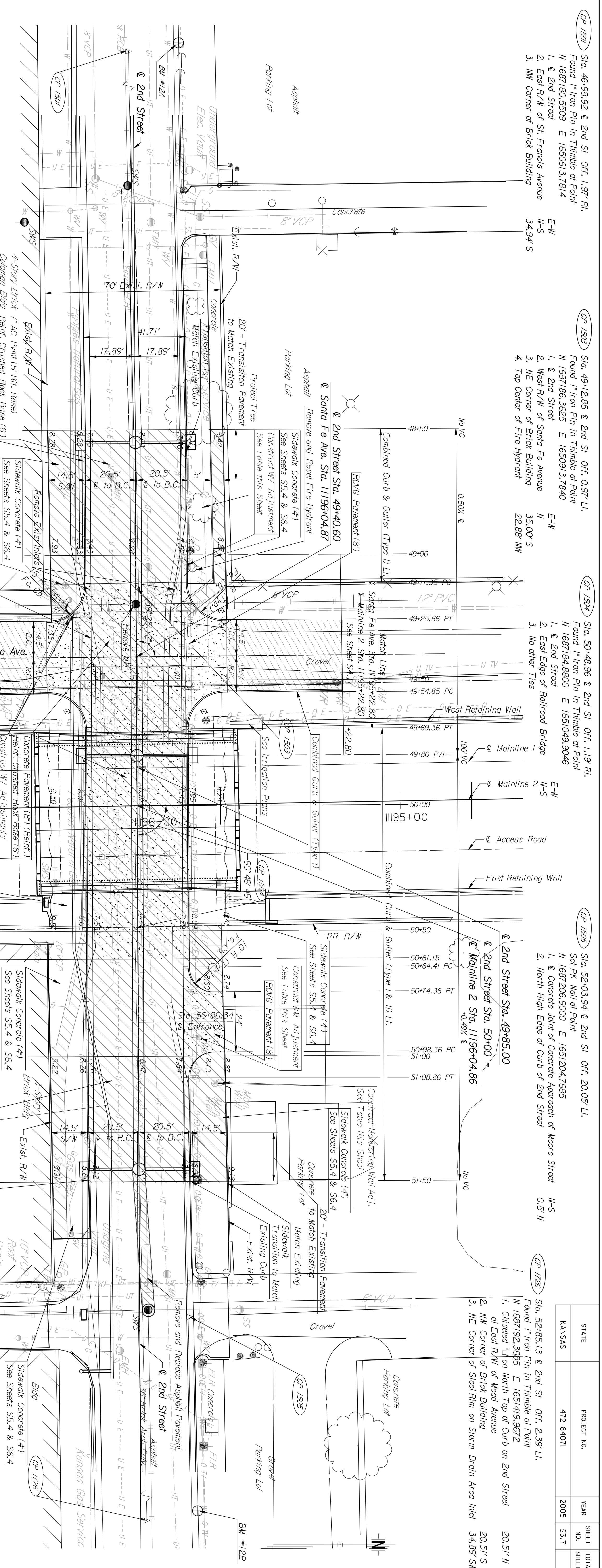
This sheet designed by:  
 For Manhole adjustment, contact  
 Dave Langley at SEC (Phone: 316-268-2008)  
 From Elev. 1301.18 to Elev. 1300.06

- ① Cross Slope Varies (See Sheets S2.1 - S2.5)
- ② Removed by Others
- ③ See Railroad Construction Phasing Plans for Track Removal
- ④ For Manhole adjustment, contact Dave Langley at SEC (Phone: 316-268-2008) From Elev. 1301.18 to Elev. 1300.06

- \* Match Existing
- ⊗ Warp Cross Slope into Existing Cross Slope
- ⊕ 5' Transition from Curb & Gutter (Speedi)
- \*\* 6' Transition from Full Height Curb to No Curb to Curb & Gutter (Type I)
- # 5' Transition from Existing Curb & Gutter to Combined Curb & Gutter (Type I)
- ## Saw Cut Line (Subsidiary to Concrete Pavement (8') (Rein.))
- ⊕ Construct Standard Wheelchair Ramp (See Sheet S6.5)
- ⊕ Cross Slope Varies (See Sheets S2.1 - S2.5)
- ② Removed by Others
- ③ See Railroad Construction Phasing Plans for Track Removal
- ④ For Manhole adjustment, contact Dave Langley at SEC (Phone: 316-268-2008) From Elev. 1301.18 to Elev. 1300.06

LEGEND

- Pavement Removal
- ▨ Rail Road Crossing Material (See Railroad Plans)
- ▨ 3" Light Type Surfacing (SA-1 or SA-2)



Station	Offset	Utility	Existing Elevation	Proposed Elevation	Adjustment
49+04.77	20.14' Lt.	WV	1297.53	1298.05	+0.52
49+12.01	28.22' Rt.	Mon Well	1297.51	1297.95	+0.44
49+17.75	26.58' Rt.	WV	1297.27	1297.96	+0.69
49+22.60	24.41' Rt.	WV	1296.99	1297.38	+0.39
49+24.39	26.47' Rt.	WV	1297.16	1297.35	+0.19
49+24.85	25.96' Rt.	WV	1297.17	1297.36	+0.19
50+92.50	24.14' Lt.	WM	1298.94	1298.42	-0.52
51+00.53	32.42' Lt.	Mon Well	1299.09	1298.89	-0.20
51+00.90	30.38' Lt.	Mon Well	1299.03	1298.85	-0.18

BM #12A - Chiseled "I" on East End of Northeast Curb Return, Northeast Corner of 2nd Street & St. Francis Elevation=1298.39

BM #12B - Chiseled "I" on Top of North Curb on 2nd Street, Northeast Corner of 2nd Street & Mead Elevation=1298.59

- Utilities
- Water - City of Wichita
- Storm Sewer - City of Wichita
- Sanitary Sewer - City of Wichita
- Telephone - Southwestern Bell Telephone
- Gas - Aquila Network
- Westar Energy - Kansas Gas Service
- TV - Cox Communications

- Notes:
- 1. For Pavement & Valley Gutter Details See Sheet S6.3
- 2. For Pavement Typical Sections See Sheet S2.4
- 3. For Storm Sewer See Sheets S8.7 & S8.8
- 4. For Joint Layout See Sheet S5.4
- 5. For Water Line Plan See Sheet S10.5
- 6. For Irrigation Plan See Sheets L2.00 - L2.20

SCALE IN FEET

SHEET NO.	DATE	BY	APP'D.
1			
2			
3			

**CITY OF WICHITA**  
 WICHITA CENTRAL CORRIDOR  
 2ND STREET  
 PLAN

DESIGNED AND DETAIL	SCALE	DATE	BY	APP'D.	TRACED
DR. AND DETAIL	1" = 20'				
CHK. AND DETAIL					
DESIGN GR.					

CP 1501 Sta. 46+98.92 @ 2nd St. Off. 1.97' Ft. Found 1" Iron Pin in Thimble of Point N 1687180.5509 E 1650613.7814

CP 1503 Sta. 49+12.85 @ 2nd St. Off. 0.97' Lt. Found 1" Iron Pin in Thimble of Point N 1687186.3625 E 1650931.7840

CP 1504 Sta. 50+48.96 @ 2nd St. Off. 1.19' Rt. Found 1" Iron Pin in Thimble of Point N 1687184.8800 E 1651049.9046

CP 1505 Sta. 52+03.94 @ 2nd St. Off. 20.05' Lt. Set PK Nail at Point N 1687206.9000 E 1651204.7685

CP 1506 Sta. 52+85.13 @ 2nd St. Off. 2.39' Lt. Found 1" Iron Pin in Thimble of Point N 1687192.3685 E 1651419.9672

CP 1507 Sta. 52+85.13 @ 2nd St. Off. 2.39' Lt. Found 1" Iron Pin in Thimble of Point N 1687192.3685 E 1651419.9672

CP 1508 Sta. 52+85.13 @ 2nd St. Off. 2.39' Lt. Found 1" Iron Pin in Thimble of Point N 1687192.3685 E 1651419.9672

CP 1509 Sta. 52+85.13 @ 2nd St. Off. 2.39' Lt. Found 1" Iron Pin in Thimble of Point N 1687192.3685 E 1651419.9672

CP 1510 Sta. 52+85.13 @ 2nd St. Off. 2.39' Lt. Found 1" Iron Pin in Thimble of Point N 1687192.3685 E 1651419.9672

CP 1511 Sta. 52+85.13 @ 2nd St. Off. 2.39' Lt. Found 1" Iron Pin in Thimble of Point N 1687192.3685 E 1651419.9672

CP 1512 Sta. 52+85.13 @ 2nd St. Off. 2.39' Lt. Found 1" Iron Pin in Thimble of Point N 1687192.3685 E 1651419.9672

CP 1513 Sta. 52+85.13 @ 2nd St. Off. 2.39' Lt. Found 1" Iron Pin in Thimble of Point N 1687192.3685 E 1651419.9672

CP 1514 Sta. 52+85.13 @ 2nd St. Off. 2.39' Lt. Found 1" Iron Pin in Thimble of Point N 1687192.3685 E 1651419.9672

CP 1515 Sta. 52+85.13 @ 2nd St. Off. 2.39' Lt. Found 1" Iron Pin in Thimble of Point N 1687192.3685 E 1651419.9672

CP 1516 Sta. 52+85.13 @ 2nd St. Off. 2.39' Lt. Found 1" Iron Pin in Thimble of Point N 1687192.3685 E 1651419.9672

CP 1517 Sta. 52+85.13 @ 2nd St. Off. 2.39' Lt. Found 1" Iron Pin in Thimble of Point N 1687192.3685 E 1651419.9672

CP 1518 Sta. 52+85.13 @ 2nd St. Off. 2.39' Lt. Found 1" Iron Pin in Thimble of Point N 1687192.3685 E 1651419.9672

CP 1519 Sta. 52+85.13 @ 2nd St. Off. 2.39' Lt. Found 1" Iron Pin in Thimble of Point N 1687192.3685 E 1651419.9672

CP 1520 Sta. 52+85.13 @ 2nd St. Off. 2.39' Lt. Found 1" Iron Pin in Thimble of Point N 1687192.3685 E 1651419.9672

CP 1521 Sta. 52+85.13 @ 2nd St. Off. 2.39' Lt. Found 1" Iron Pin in Thimble of Point N 1687192.3685 E 1651419.9672

CP 1522 Sta. 52+85.13 @ 2nd St. Off. 2.39' Lt. Found 1" Iron Pin in Thimble of Point N 1687192.3685 E 1651419.9672

CP 1523 Sta. 52+85.13 @ 2nd St. Off. 2.39' Lt. Found 1" Iron Pin in Thimble of Point N 1687192.3685 E 1651419.9672

CP 1524 Sta. 52+85.13 @ 2nd St. Off. 2.39' Lt. Found 1" Iron Pin in Thimble of Point N 1687192.3685 E 1651419.9672

CP 1525 Sta. 52+85.13 @ 2nd St. Off. 2.39' Lt. Found 1" Iron Pin in Thimble of Point N 1687192.3685 E 1651419.9672

CP 1526 Sta. 52+85.13 @ 2nd St. Off. 2.39' Lt. Found 1" Iron Pin in Thimble of Point N 1687192.3685 E 1651419.9672

CP 1527 Sta. 52+85.13 @ 2nd St. Off. 2.39' Lt. Found 1" Iron Pin in Thimble of Point N 1687192.3685 E 1651419.9672

CP 1528 Sta. 52+85.13 @ 2nd St. Off. 2.39' Lt. Found 1" Iron Pin in Thimble of Point N 1687192.3685 E 1651419.9672

CP 1529 Sta. 52+85.13 @ 2nd St. Off. 2.39' Lt. Found 1" Iron Pin in Thimble of Point N 1687192.3685 E 1651419.9672

CP 1530 Sta. 52+85.13 @ 2nd St. Off. 2.39' Lt. Found 1" Iron Pin in Thimble of Point N 1687192.3685 E 1651419.9672