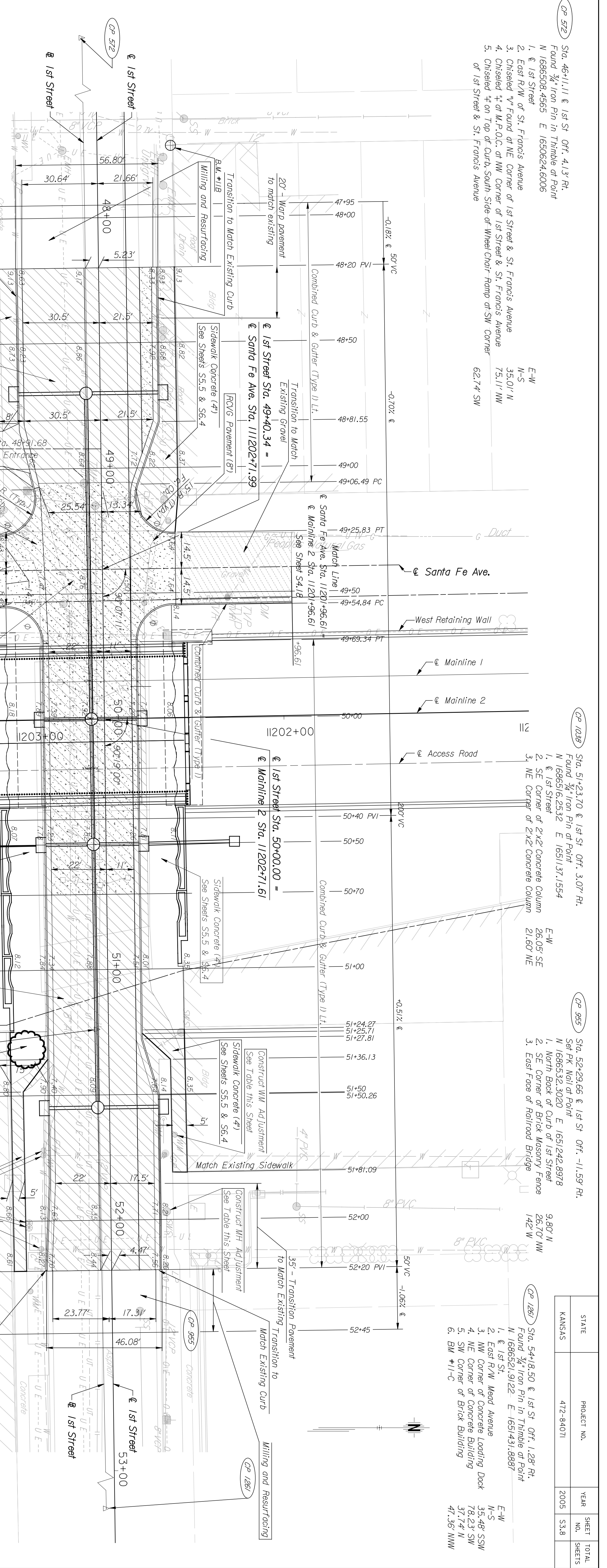


BY	DATE

**CPNTB**  
**ARCHITECTS ENGINEERS PLANNERS**

This sheet designed by:  
 For Manhole adjustment, contact  
 Dave Langley of SBC (Phone: 316-268-2008)  
 From Elev. 1301.18 to Elev. 1300.06

- ① Cross Slope Varies (See Sheets S2.1 - S2.5)
- ② Removed by Others
- ③ See Railroad Construction Phasing Plans for Track Removal
- ④ For Manhole adjustment, contact Dave Langley of SBC (Phone: 316-268-2008) From Elev. 1301.18 to Elev. 1300.06



Station	Offset	Utility	Existing Elevation	Proposed Elevation	Adjustment
49+16.10	39.03 Ft.	Man Well	1297.69	1298.10	+0.41
49+17.57	40.39 Ft.	Man Well	1297.65	1298.12	+0.47
51+66.26	25.91' Lt.	WM	1298.25	1298.29	+0.04
51+71.81	26.54' Ft.	FH	1298.46	1298.14	-0.32
51+73.84	26.66' Ft.	WV	1298.51	1298.15	-0.36
51+96.79	22.25' Lt.	SMS MH	1298.26	1298.25	-0.01
52+00.75	32.71' Ft.	Man Well	1298.54	1298.49	-0.05
52+02.62	32.78' Ft.	Man Well	1298.51	1298.50	-0.01
52+11.19	27.96' Ft.	WV	1298.31	1298.30	-0.01

BM #1/B - Chiseled "d" of Southwest Corner of "Cone Building", North Side of 1st Street & East of Alley between St. Francis & Santa Fe Elevation=1293.54

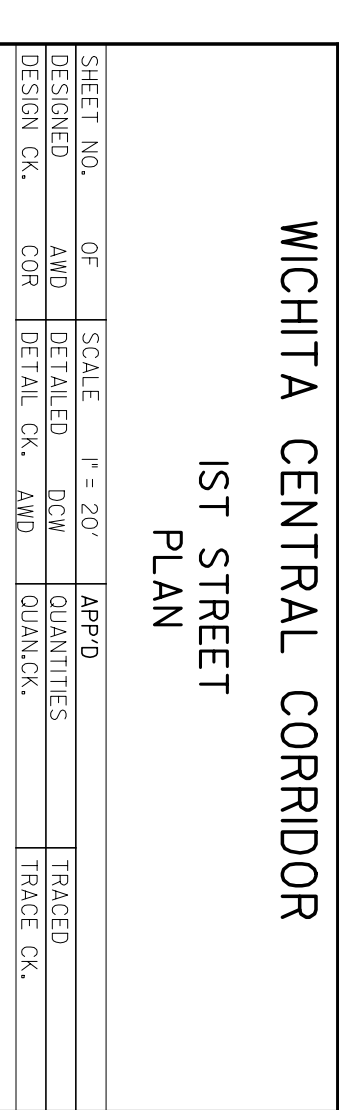
**Utilities**  
 City of Wichita  
 City of Wichita  
 City of Wichita  
 Southwestern Bell Telephone  
 Aquila Network  
 Kansas Gas Service  
 Westar Energy  
 Cox Communications

**Notes:**  
 1. For Pavement & Valley Gutter Details See Sheet S6.3  
 2. For Pavement Typical Sections See Sheet S2.5  
 3. For Storm Sewer See Sheets S8.9 & S8.10  
 4. For Joint Layout See Sheet S5.5

NO.	DATE	REVISIONS	BY	APP'D.
1				
2				
3				

**CITY OF WICHITA**  
**WICHITA CENTRAL CORRIDOR**  
**1ST STREET**  
**PLAN**

SHEET NO.	OF	SCALE	F = 20'	APP'D.
DESIGNED	AND	DETAILED	BY	QUANTITIES
DESIGN GR.	CON.	DETAIL GR.	AND	TRACE GR.



**CP 522**  
 Sta. 46+11.11 @ 1st St. Off. 4.13' Rt.  
 Found 3/4" Iron Pin in Trimble at Point  
 N 1686508.4565 E 1650624.6006  
 1. @ 1st Street  
 2. East R/W of St. Francis Avenue  
 3. Chiseled "v" Found at NE Corner of 1st Street & St. Francis Avenue  
 4. Chiseled "d" at M.P.O.C. at NW Corner of 1st Street & St. Francis Avenue  
 5. Chiseled "u" on Top of Curb, South Side of Wheel Chair Ramp at SW Corner of 1st Street & St. Francis Avenue  
 E-W  
 N-S  
 35.01' N  
 75.11' NW  
 62.74' SW

**CP 1038**  
 Sta. 51+23.70 @ 1st St. Off. 3.07' Rt.  
 Found 3/4" Iron Pin at Point  
 N 1686516.2532 E 1651137.1554  
 1. @ 1st Street  
 2. SE Corner of 2x2 Concrete Column  
 3. NE Corner of 2x2 Concrete Column  
 E-W  
 26.05' SE  
 21.60' NE

**CP 995**  
 Sta. 52+29.66 @ 1st St. Off. -11.59' Rt.  
 Set PK Nail at Point  
 N 1686532.3020 E 1651242.8978  
 1. North Back of Curb of 1st Street  
 2. SE Corner of Brick Masonry Fence  
 3. East Face of Railroad Bridge  
 E-W  
 26.70' NW  
 142' W

**CP 1281**  
 Sta. 54+18.50 @ 1st St. Off. 1.28' Rt.  
 Found 3/4" Iron Pin in Trimble at Point  
 N 1686521.9122 E 1651431.8887  
 1. @ 1st St.  
 2. East R/W Mead Avenue  
 3. NW Corner of Concrete Loading Dock  
 4. NE Corner of Concrete Building  
 5. SW Corner of Brick Building  
 6. BM #11-C  
 E-W  
 N-S  
 35.48' SSW  
 78.23' SW  
 37.74' N  
 47.36' NNW

STATE	KANSAS	PROJECT NO.	472-84071	YEAR	2005	SHEET NO.	53.8	TOTAL SHEETS	
-------	--------	-------------	-----------	------	------	-----------	------	--------------	--