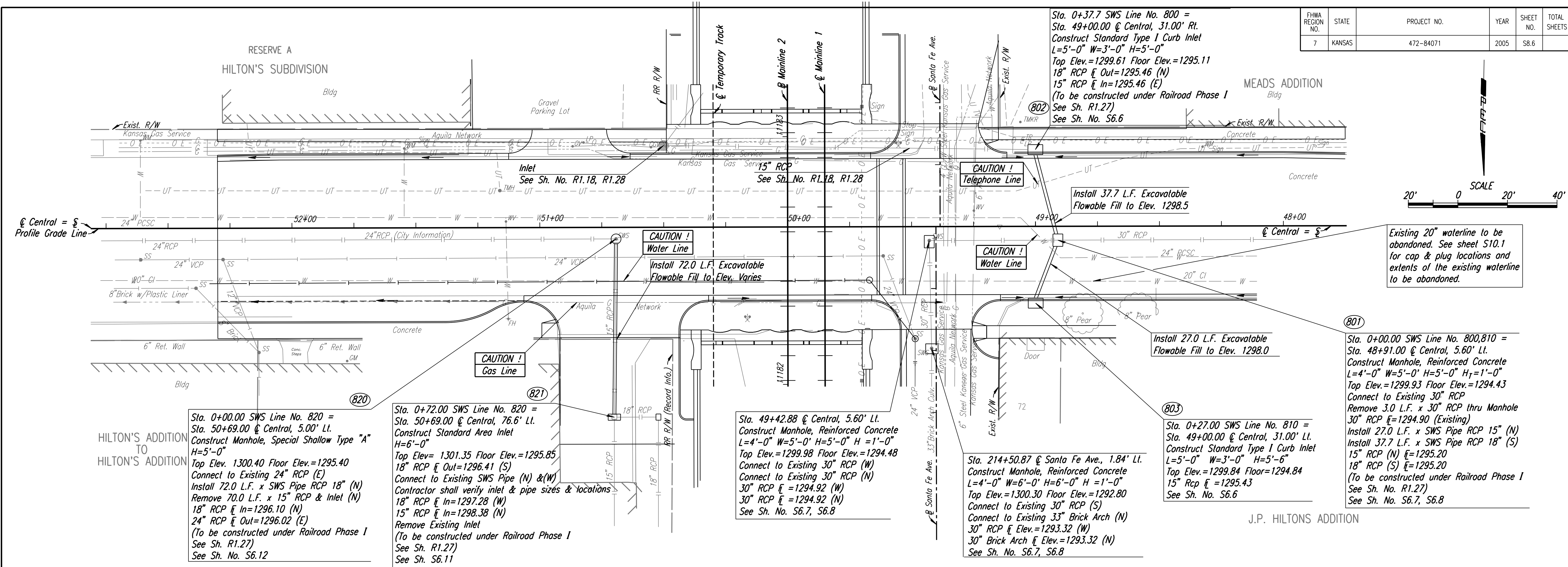


DATE	
BY	

DSNR: RWM OPER: SDM SCALE: 1"=20'
 1:/1999/99189/bid set 3/SHEETS/S8.6_SWS_CENTRAL.DGN LAST REV: 10-17-2003 BY: drp

FHWA REGION NO.	STATE	PROJECT NO.	YEAR	SHEET NO.	TOTAL SHEETS
7	KANSAS	472-84071	2005	S8.6	



Existing 20" waterline to be abandoned. See sheet S10.1 for cap & plug locations and extents of the existing waterline to be abandoned.

Sta. 0+00.00 SWS Line No. 820 =
 Sta. 50+69.00 @ Central, 5.00' Lt.
 Construct Manhole, Special Shallow Type "A"
 H=5'-0"
 Top Elev. 1300.40 Floor Elev.=1295.40
 Connect to Existing 24" RCP (E)
 Install 72.0 L.F. x SWS Pipe RCP 18" (N)
 Remove 70.0 L.F. x 15" RCP & Inlet (N)
 18" RCP In=1297.28 (W)
 18" RCP In=1296.10 (N)
 24" RCP Out=1296.02 (E)
 (To be constructed under Railroad Phase I)
 See Sh. R1.27
 See Sh. No. S6.12

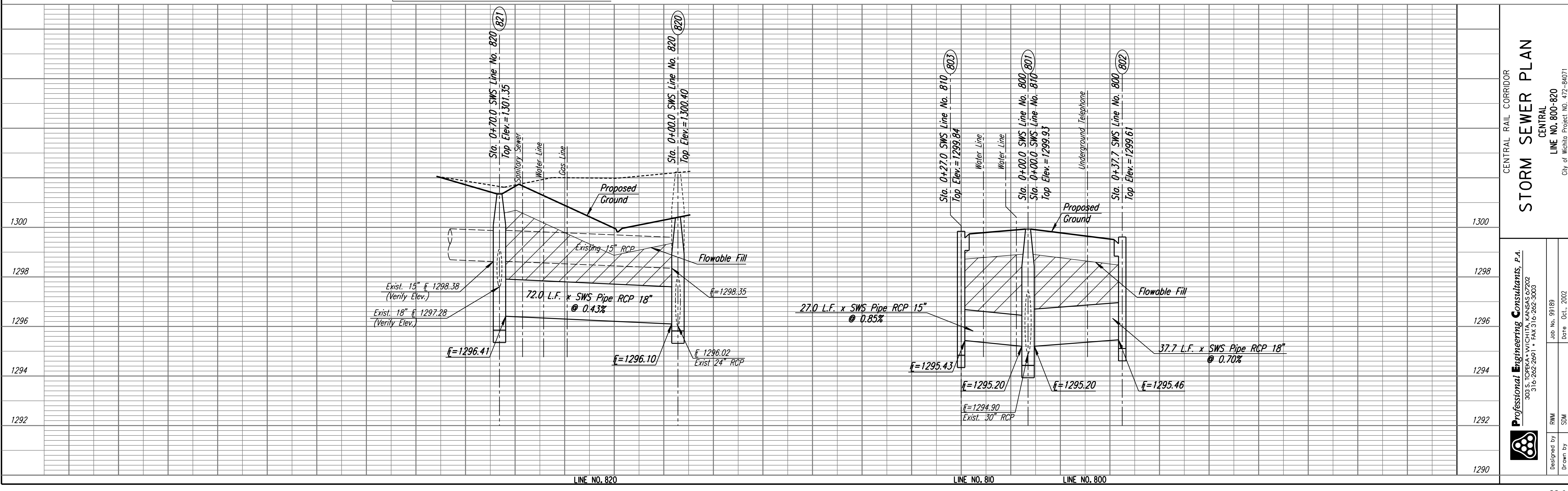
Sta. 0+72.00 SWS Line No. 820 =
 Sta. 50+69.00 @ Central, 76.6' Lt.
 Construct Standard Area Inlet
 H=6'-0"
 Top Elev. = 1301.35 Floor Elev.=1295.85
 18" RCP In=1296.41 (S)
 Connect to Existing SWS Pipe (N) & (W)
 Contractor shall verify inlet & pipe sizes & locations
 18" RCP In=1297.28 (W)
 15" RCP In=1298.38 (N)
 Remove Existing Inlet
 (To be constructed under Railroad Phase I)
 See Sh. R1.27
 See Sh. S6.11

Sta. 49+42.88 @ Central, 5.60' Lt.
 Construct Manhole, Reinforced Concrete
 L=4'-0" W=5'-0" H=5'-0" H_r=1'-0"
 Top Elev.=1299.98 Floor Elev.=1294.48
 Connect to Existing 30" RCP (W)
 Connect to Existing 30" RCP (N)
 30" RCP In=1294.92 (W)
 30" RCP In=1294.92 (N)
 See Sh. No. S6.7, S6.8

Sta. 214+50.87 @ Santa Fe Ave., 1.84' Lt.
 Construct Manhole, Reinforced Concrete
 L=4'-0" W=6'-0" H=6'-0" H_r=1'-0"
 Top Elev.=1300.30 Floor Elev.=1292.80
 Connect to Existing 30" RCP (S)
 Connect to Existing 33" Brick Arch (N)
 30" RCP In Elev.=1293.32 (W)
 30" Brick Arch In Elev.=1293.32 (N)
 See Sh. No. S6.7, S6.8

Sta. 0+27.00 SWS Line No. 810 =
 Sta. 49+00.00 @ Central, 31.00' Lt.
 Construct Standard Type I Curb Inlet
 L=5'-0" W=3'-0" H=5'-6"
 Top Elev.=1299.84 Floor=1294.84
 15" RCP In=1295.43
 See Sh. No. S6.6

Sta. 0+00.00 SWS Line No. 800,810 =
 Sta. 48+91.00 @ Central, 5.60' Lt.
 Construct Manhole, Reinforced Concrete
 L=4'-0" W=5'-0" H=5'-0" H_r=1'-0"
 Top Elev.=1299.93 Floor Elev.=1294.43
 Connect to Existing 30" RCP
 Remove 3.0 L.F. x 30" RCP thru Manhole
 30" RCP In=1294.90 (Existing)
 Install 27.0 L.F. x SWS Pipe RCP 15" (N)
 Install 37.7 L.F. x SWS Pipe RCP 18" (S)
 15" RCP (N) In=1295.20
 18" RCP (S) In=1295.20
 (To be constructed under Railroad Phase I)
 See Sh. No. R1.27
 See Sh. No. S6.7, S6.8



CENTRAL RAIL CORRIDOR
STORM SEWER PLAN
 CENTRAL
 LINE NO. 800-820
 City of Wichita Project NO. 472-84071

Professional Engineering Consultants, P.A.
 303 S. FORBES AVENUE, WICHITA, KANSAS 67202
 316-262-2661 • FAX 316-262-3003

Designed by: RWM
 Drawn by: SDM
 Job No. 99189
 Date: Oct., 2002