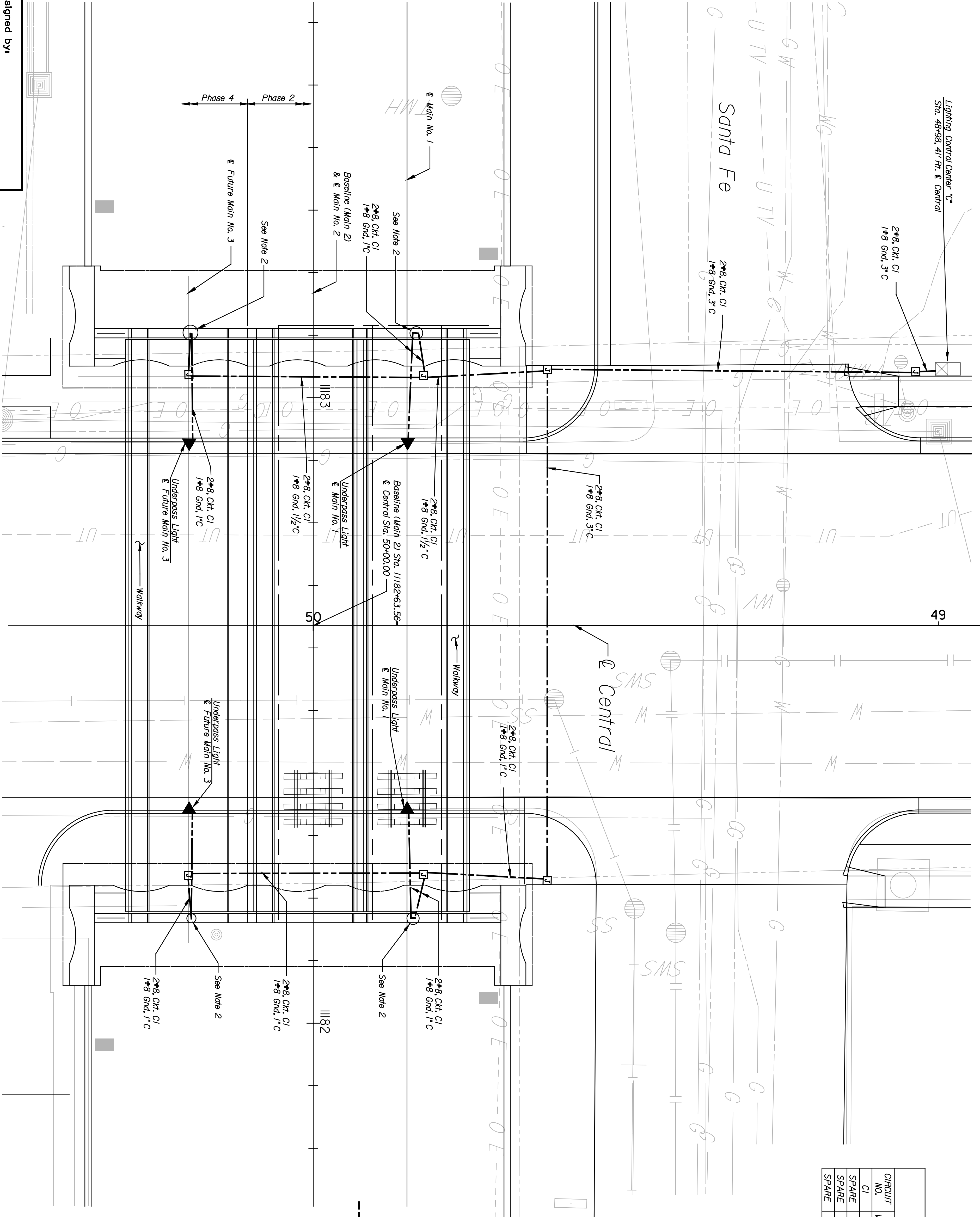


	BY	DATE

Plotted on: Tuesday, January 04, 2005 09:00
 dlutz Plot Queue: \\cbsw100\KC029049-PS
 Plot Scale: 8,000000\H\000000 Pen Table: J:\29049\Library\plotpen\1fg-fullsize.pen
 Design Filename: \\kcow30\elec\29049\Draws\cads Plan C Base\central\lighting\0.dgn

Lighting Control Center 'C'
 Sta. 48+98.41' R/L & Central



49

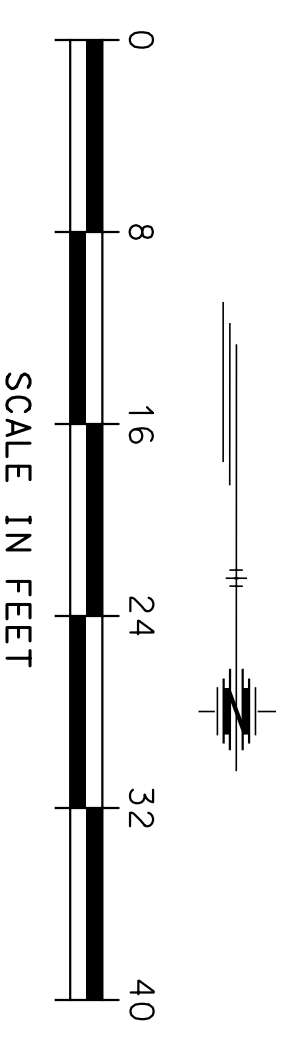
CIRCUIT SCHEDULE					
CONTROL CENTER 'C'					
120/240 VOLT					
CIRCUIT NO.	CIRCUIT VOLTAGE	CONNECTED LOAD	BREAKER SIZE	CONDUCTOR SIZE	WIRE GND SIZE
CI	240	480 W	30A	30A	#8
SPARE			30A	30A	#8
SPARE			30A	30A	#8
SPARE			30A	30A	#8

PLAN NOTES

- The contractor shall coordinate the installation of all conduit with road and bridge construction and other improvements.
- See structural drawings B4.7 and B4.10 for conduit routed in abutment wall. Install liquid tight flexible metal conduit from abutment wall to conduit mounted to the bridge deck. Install pull box to bridge deck as necessary to pull circuit. See detail on sheet LA.10.

LIGHTING LEGEND

- Pad Mounted Lighting Control Center Enclosure
- Wall or Horizontal Mounted Underpass Luminaire
- Ground Mounted Junction Box, 11" x 18" x 12"
- Conductor in Rigid Metal Conduit, Size and Quantity as Per Plans.

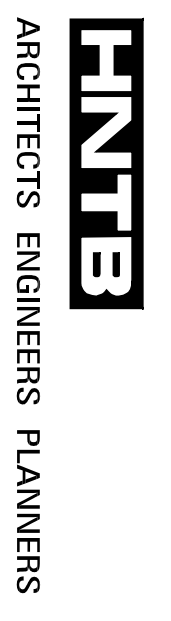


NO.	DATE	REVISIONS	BY	APP'D.
1				
2				
3				

WICHITA CENTRAL CORRIDOR LIGHTING PLAN

SHEET NO.	OF	SCALE	V.A.	1" = 1'-0"	APP'D.
DESIGNED	UGS	DETAILS	SMS	QUANTITIES	TRACED
DRAWN	CK.	DBL	DBL	QUANTITIES	TRACE
					CK.

This sheet designed by:



The information shown on this drawing concerning type and location of underground utilities is not guaranteed to be accurate or all inclusive. The Contractor is responsible for making his own determinations as to type and location of underground utilities as may be necessary to avoid damage thereto.