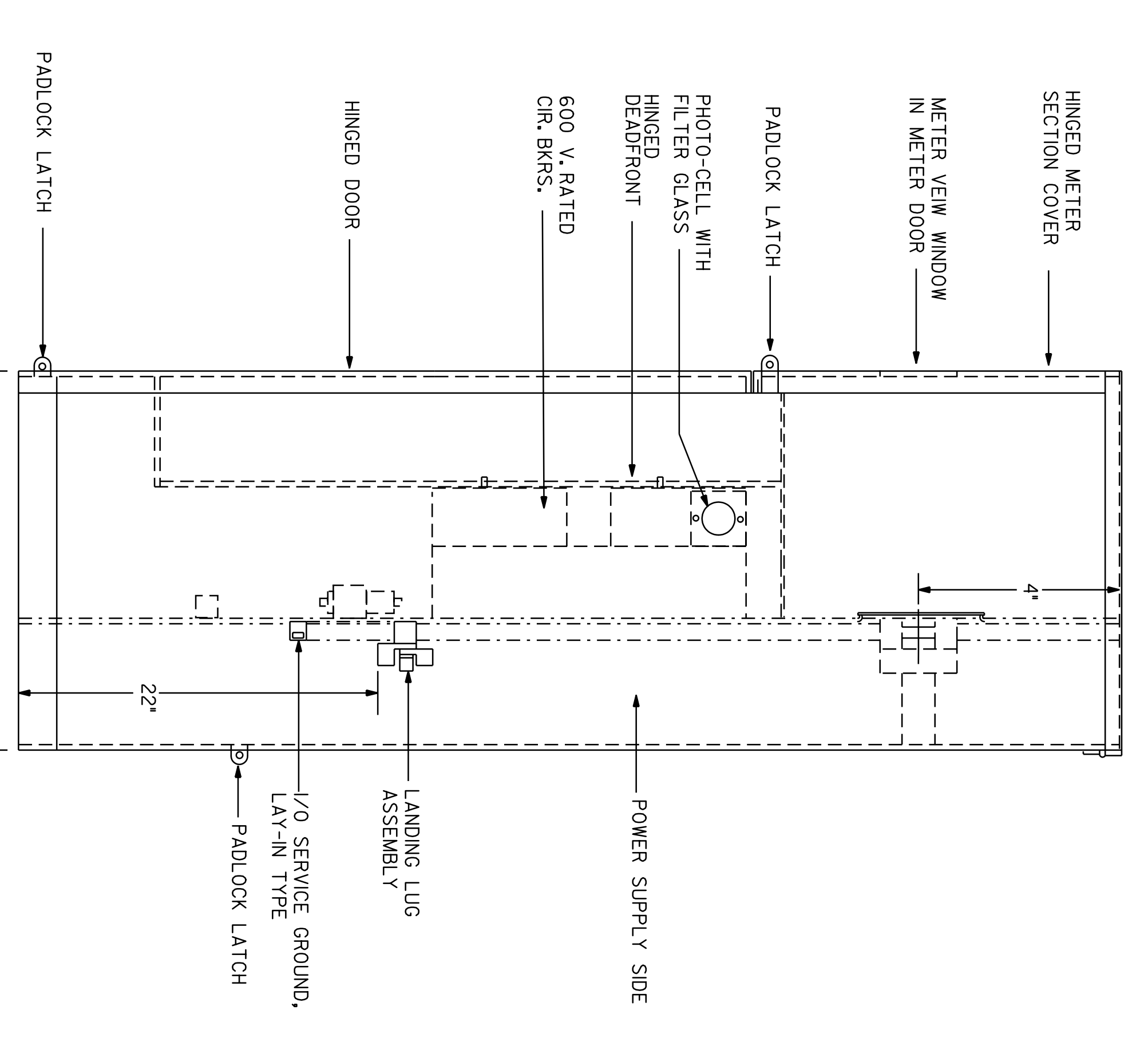
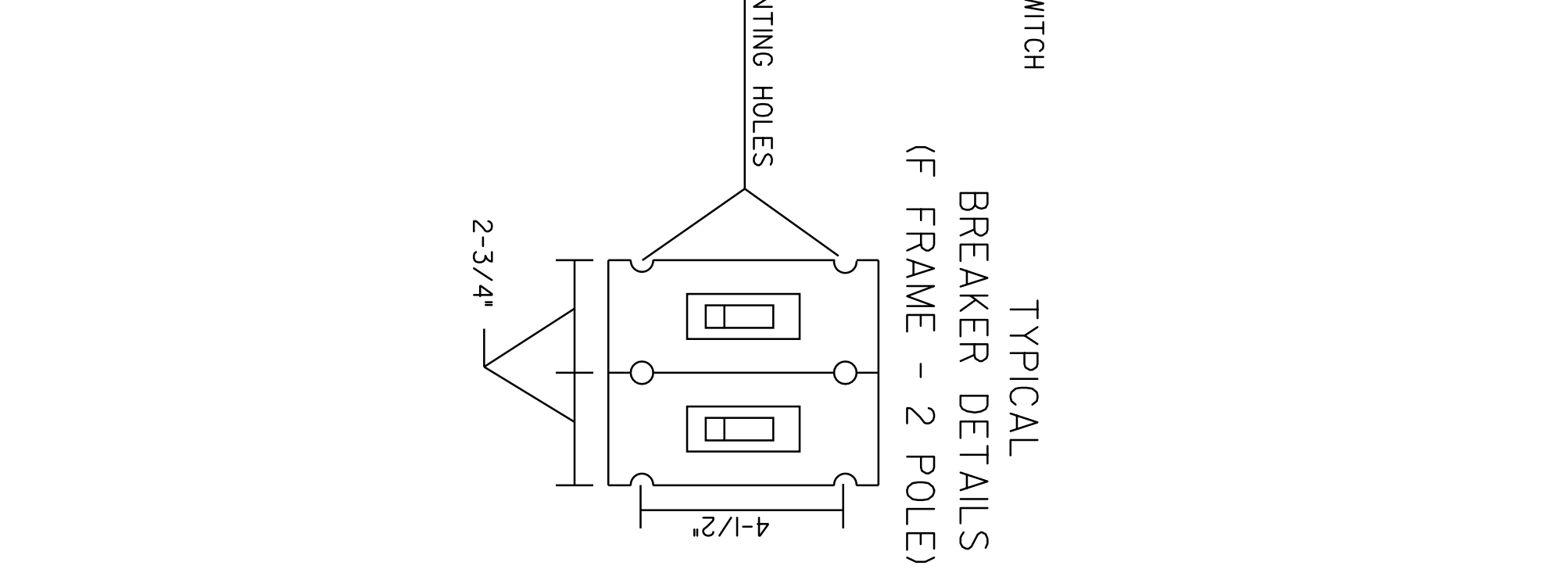
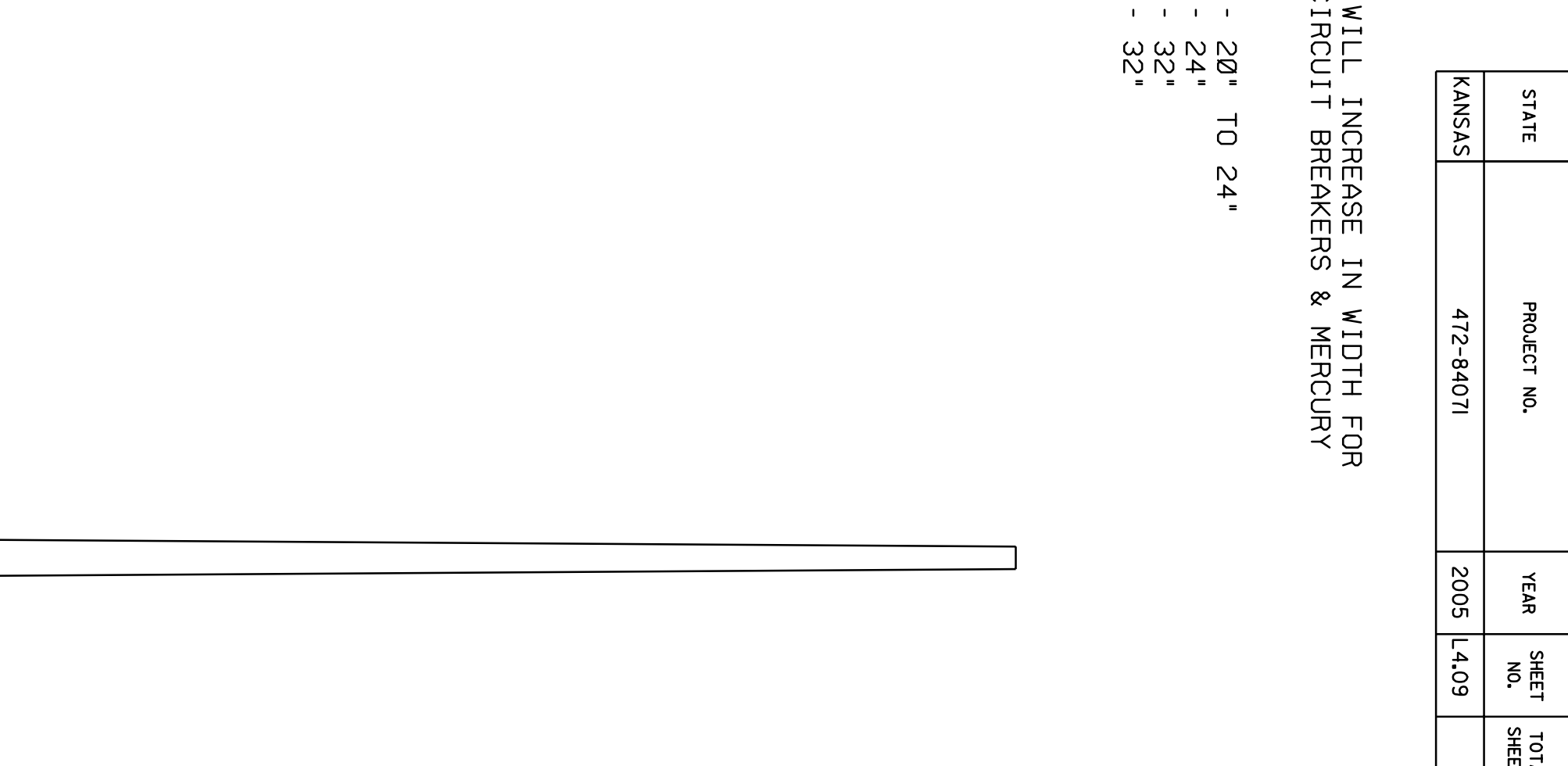


FRONT VIEW



SIDE VIEW



POWER ARRANGEMENT

NOTES:

THE ENCLOSURE CABINET SHALL BE CONSTRUCTED OF 5052 ALLOY ALUMINUM .125" THICK. THE CABINET SHALL BE OF CLEAN CUT DESIGN HAVING NO SHARP EDGES, CORNERS OR PROJECTIONS.

THE CUSTOMER DOOR SHALL BE HINGED THE FULL LENGTH OF THE DOOR AND HAVE SUITABLE MEANS OF HOLDING THE DOOR IN THE FULLY OPEN POSITION.

THE DEAD FRONT DOOR SHALL BE HINGED AND HAVE 3/4 TURN CLIPS OR OTHER SUITABLE MEANS OF LOCKING.

SERVICE ENTRANCE IN BACK OF ENCLOSURE SHALL HAVE A HINGED OR A LIFT OFF COVER WITH PAD LOCK PROVISIONS.

THE SECONDARY BREAKER FOR THE PHOTO-CELL CIRCUIT SHALL BE 240 VOLT, 15 AMP SINGLE POLE.

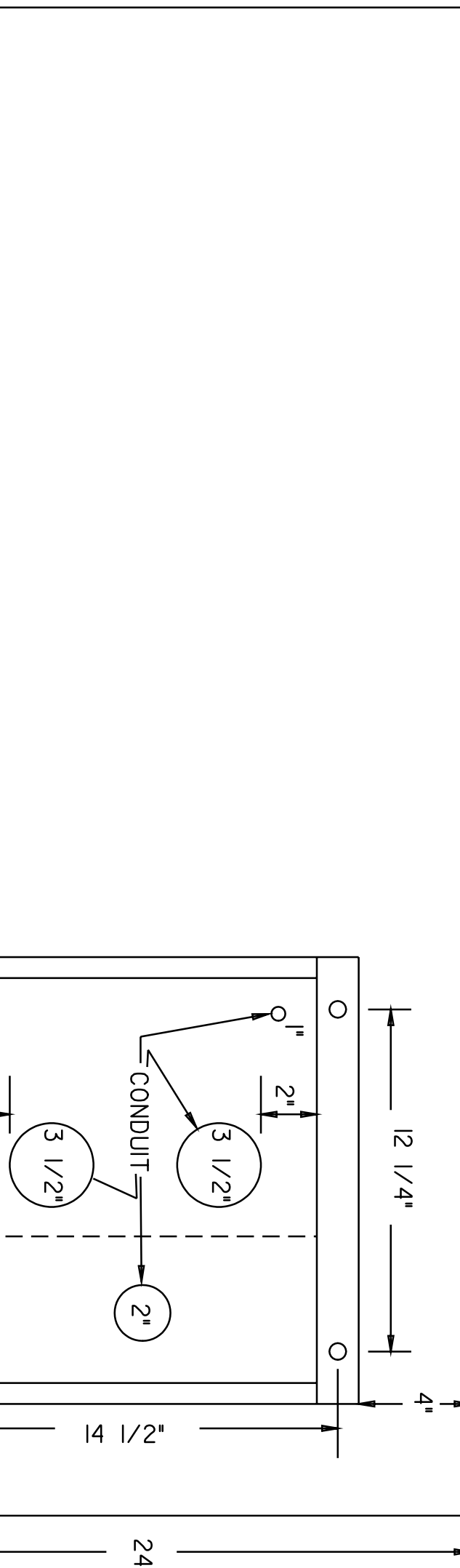
THE WIRING FROM PB1 AND PB2 TO T1 THROUGH T4 SHALL BE NO. 4 A.W.G. THW.

THE WIRING FOR THE LOAD AND LINE SIDE OF THE MAIN BREAKER SHALL BE THE SAME SIZE WITH THW WIRE.

THE WIRING FOR THE P.E.C. CIRCUIT SHALL BE NO. 12 A.W.G. THW.

WHEN SPECIFIED, THE 120V AC CIRCUITS REQUIRE ONLY A SINGLE POLE BREAKER (SIZE AS PER PLANS). THE NEUTRAL SHALL NOT BE SWITCHED AT THE CONTACTOR AND SHALL CONNECT DIRECTLY TO THE NEUTRAL BAR. THE TWO 120V BOLLARD CIRCUITS AT EACH BRIDGE SHALL BE CONNECTED TO A DIFFERENT LEG OF THE 240V SERVICE TO BALANCE THE LOAD.

MAIN BREAKER		100 AMP
SECONDARY BREAKER		
CIRCUIT NO. 1	1	AMP
CIRCUIT NO. 2	2	AMP
CIRCUIT NO. 3	3	AMP
CIRCUIT NO. 4	4	AMP
MERCURY CONTACTORS		
CIRCUIT NO. 1	1	AMP
CIRCUIT NO. 2	2	AMP
CIRCUIT NO. 3	3	AMP
CIRCUIT NO. 4	4	AMP



TOP VIEW

NOTE: THE DUCT FOR SECONDARY CABLE SHALL EXTEND 1" PAST THE END OF THE CONDUIT BEND.

NOTE: 3 1/2" CONDUIT TO EXTEND 1" MIN. ABOVE CONCRETE SURFACE.

PAD DIMENSIONS SHALL BE ADJUSTED ACCORDINGLY FOR THE WIDTH OF THE ENCLOSURE TO BE INSTALLED.

NOTE: DIMENSIONS WILL INCREASE IN WIDTH FOR 5 OR MORE CIRCUIT BREAKERS & MERCURY CONTACTORS.

5 CIRCUITS - 20" TO 24"
 6 CIRCUITS - 24"
 7 CIRCUITS - 32"
 8 CIRCUITS - 32"

STATE	PROJECT NO.	YEAR	SHEET NO.	TOTAL SHEETS
KANSAS	472-84071	2005	L4-09	

KANSAS DEPARTMENT OF TRANSPORTATION

TYPICAL ENCLOSURE DETAILS

TE202	06/09/93	APP'D	LINDA G. VOSS	4/19/93
DESIGNED	KG	DETAILED	DC	QUANTITIES
DESIGN CK.	KG	REVISIONS	DBL	TRACED
			BY	APP'D