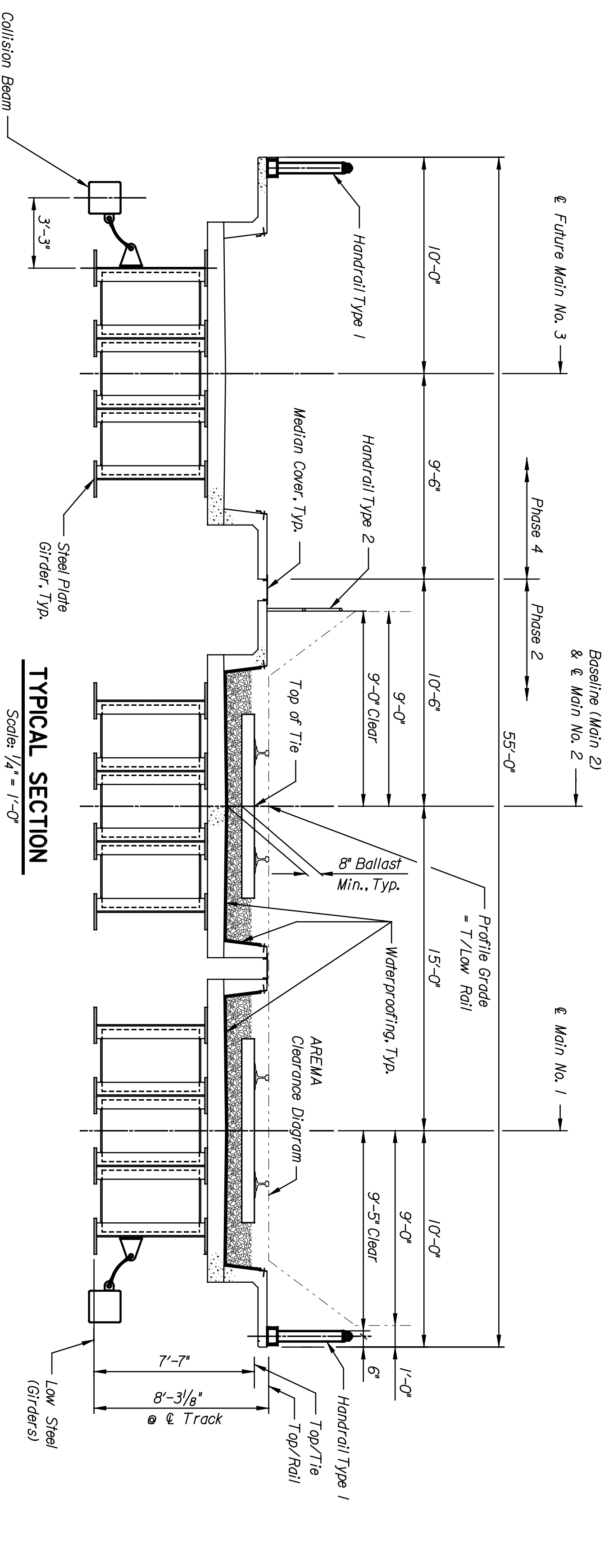
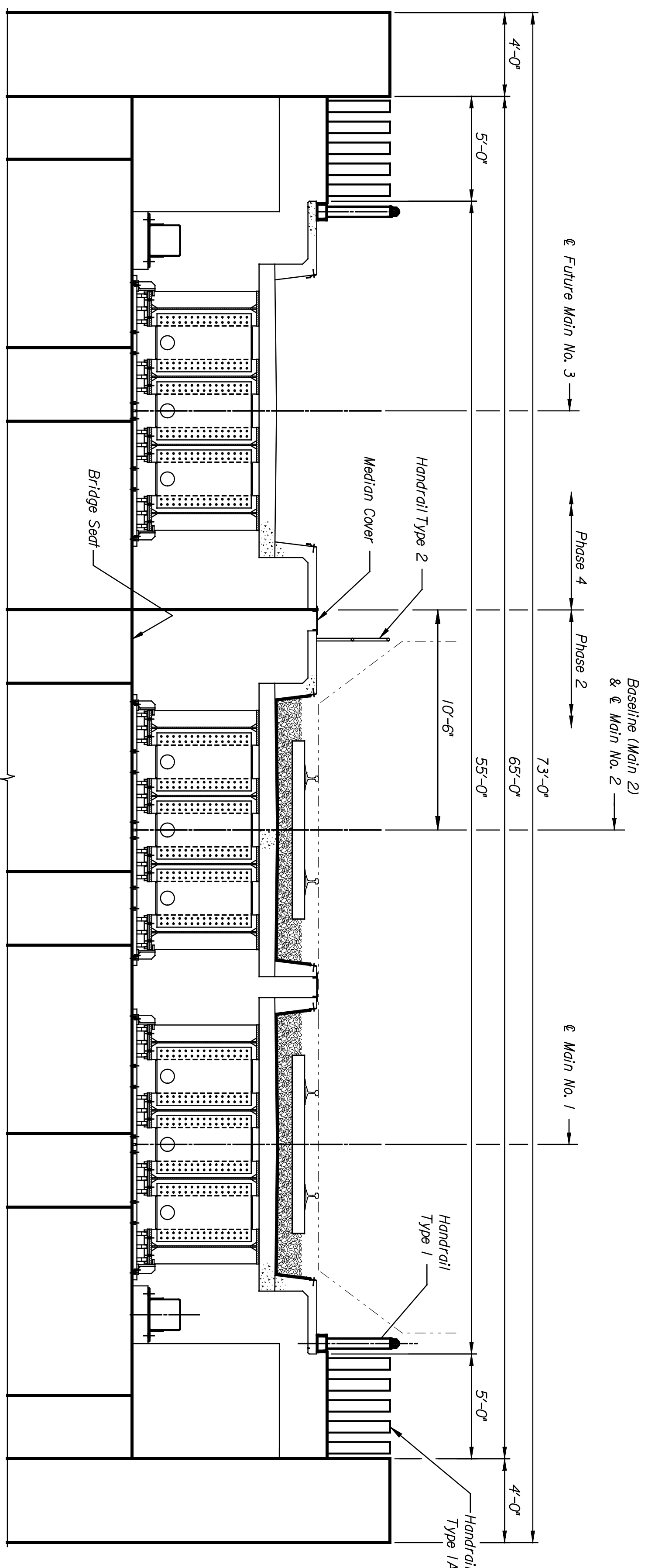


BY	DATE

Plotted on: 04-JAN-2005 12:01 \*time\$  
 scindrell Plot Queue: #queue\$  
 Plot Scale: #scale\$ Pen Table: #pentables  
 Design Filename: k:\b29049\bridgesDec2004\Ballard Lighting Alternate\murdock\drawings\m102.dgn.

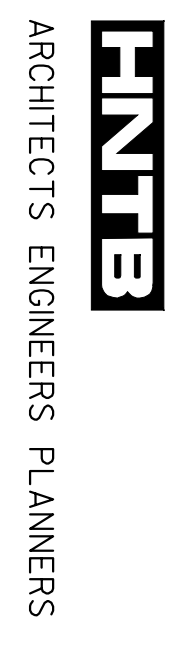


**TYPICAL SECTION**  
 Scale: 1/4" = 1'-0"



**TYPICAL SECTION**  
 Scale: 1/4" = 1'-0"

This sheet designed by:



STATE	PROJECT NO.	YEAR	SHEET NO.	TOTAL SHEETS
KANSAS	472-84071	2005	BL3.2	

NOTES:  
 Top of Rail to Top of Girder Assumptions:  
 Rail + Tie Plate Thickness, 8.125"  
 Tie Thickness, 7.000"  
 Ballast Below Tie Thickness, 8.000"  
 Waterproofing Thickness, 1.060"  
 Deck Thickness, 10.000"

**INDEX OF BRIDGE DRAWINGS**

SHEET NO.	DRAWING TITLE
BL3.1	GENERAL PLAN AND ELEVATION
BL3.2	TYPICAL SECTION
BL3.3	SUMMARY OF QUANTITIES AND GENERAL NOTES
BL3.4	FOUNDATION LAYOUT
BL3.5	ANCHOR BOLT LAYOUT
BL3.6	ABUTMENT NO. 1 PLAN
BL3.7	ABUTMENT NO. 1 ELEVATION & DETAILS
BL3.8	ABUTMENT NO. 1 FOOTING & DETAILS
BL3.9	ABUTMENT NO. 2 PLAN
BL3.10	ABUTMENT NO. 2 ELEVATION & DETAILS
BL3.11	ABUTMENT NO. 2 FOOTING & DETAILS
BL3.12	WINGWALL ELEVATIONS & DETAILS
BL3.13	ABUTMENT DETAILS
BL3.14	TYPICAL FRAMING PLAN AND GIRDER ELEVATION
BL3.15	TYPICAL SUPERSTRUCTURE DETAILS
BL3.16	EXPANSION BEARING DEVICE DETAILS
BL3.17	FIXED BEARING DEVICE DETAILS
BL3.18	DECK PLAN
BL3.19	DECK SECTION & DETAILS
BL3.20	BRIDGE HANDRAIL (TYPE 1 / 1A)
BL3.21	BRIDGE HANDRAIL (TYPE 2)
BL3.22	WATERPROOFING & DRAINAGE DETAILS
BL3.23	PLANTER-BRIDGE-DETAILS-I
BL3.24	PLANTER-BRIDGE-DETAILS-II
BL3.25	COLLISION BEAM DETAILS
BL3.26	ABUTMENT NO. 1 REINFORCING DETAILS
BL3.27	ABUTMENT NO. 2 REINFORCING DETAILS
BL3.28	DECK REINFORCING DETAILS

LOCATION: RWSF BR 2115 WICHITA, KS		LINE SEGMENT 7400	
SHEET NO.	OF	SCALE AS NOTED	APP'D.
DESIGNED	ENR	DATE	BY
DRAWN	DWH	DATE	BY
DESIGN GR.	DWH	DATE	BY
TRACED	DWH	DATE	BY
DRAWN	DWH	DATE	BY

CITY OF WICHITA
WICHITA CENTRAL CORRIDOR
ALTERNATE 5
MURDOCK
TYPICAL SECTION

NO.	DATE	REVISIONS	BY	APP'D.
1				
2				
3				