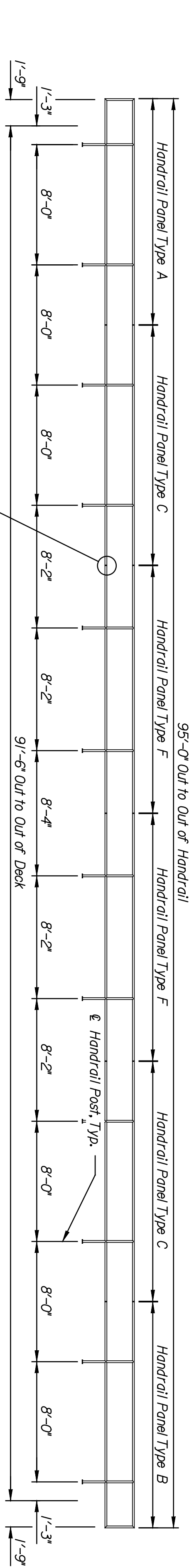
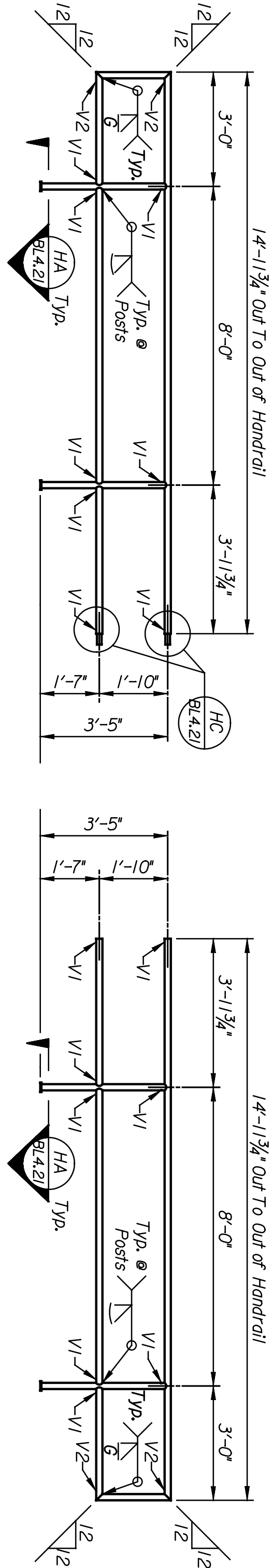


DATE	BY

Plotted on: 04-JAN-2005 11:50
 scindrell Plot Queue: #queue#
 Plot Scale: #scale# Pen Table: #pentables
 Design Filename: k:\b29049\brldgesDec2004\Ballard Lighting Alternate\Central\Drawings\c20.dgn



HANDRAIL ELEVATION (Type 2)
 Scale: 3/8" = 1'-0"



HANDRAIL PANEL TYPE A

No. Required = 1

Weight = 105 Lbs. Each

Handrail Panels are to be fabricated using
 1/2" Dia. std. Black Pipe.
 (Galvanize after fabrication)

Scale: 3/8" = 1'-0"

HANDRAIL PANEL TYPE B

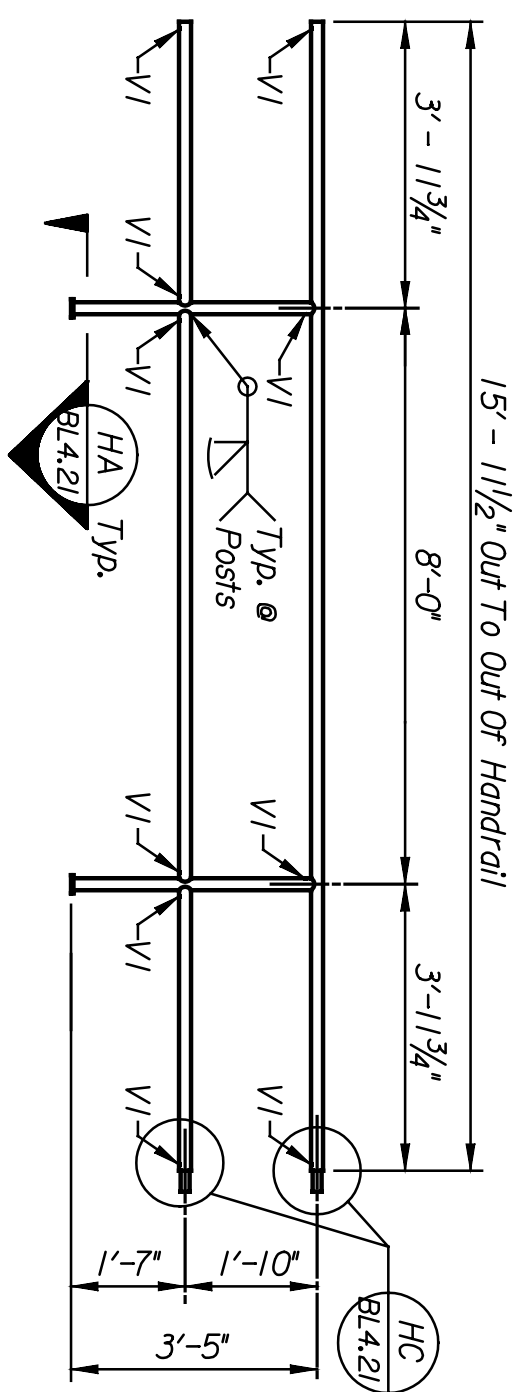
No. Required = 1

Weight = 105 Lbs. Each

Handrail Panels are to be fabricated using
 1/2" Dia. std. Black Pipe.
 (Galvanize after fabrication)

Scale: 3/8" = 1'-0"

V1 = 3/8" Dia. Drilled Vent Hole 1"
 From Joint Unless Noted Otherwise
 V2 = 1/2" Dia. Drilled Vent 1" from Joint



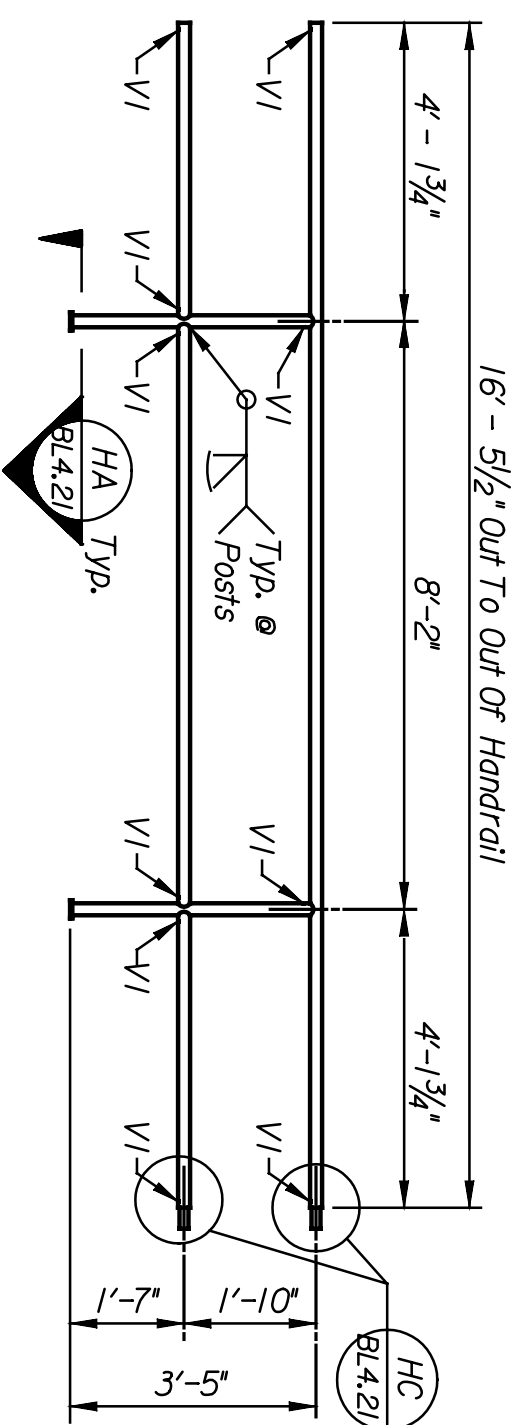
HANDRAIL PANEL TYPE C

No. Required = 2

Weight = 106 Lbs. Each

Handrail Panels are to be fabricated using
 1/2" Dia. std. Black Pipe.
 (Galvanize after fabrication)

Scale: 3/8" = 1'-0"



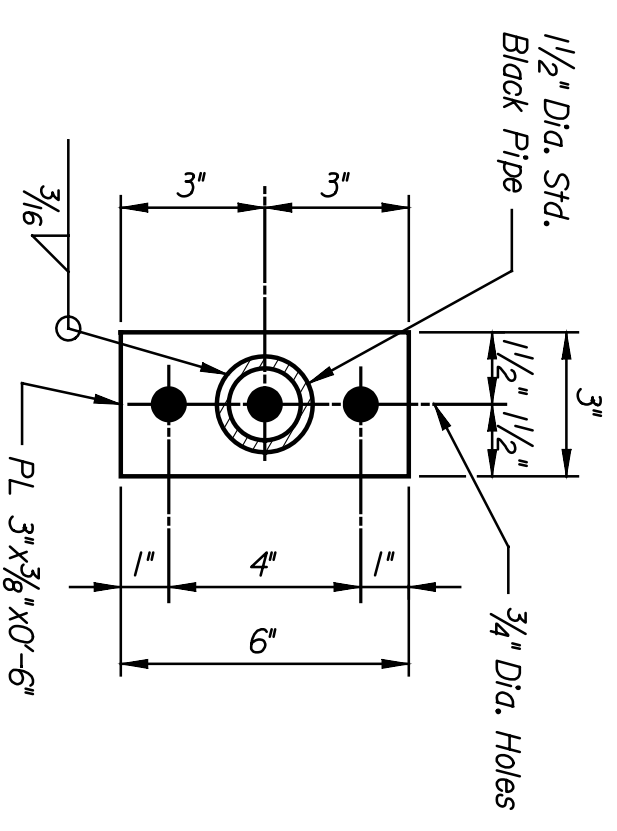
HANDRAIL PANEL TYPE F

No. Required = 2

Weight = 108 Lbs. Each

Handrail Panels are to be fabricated using
 1/2" Dia. std. Black Pipe.
 (Galvanize after fabrication)

Scale: 3/8" = 1'-0"

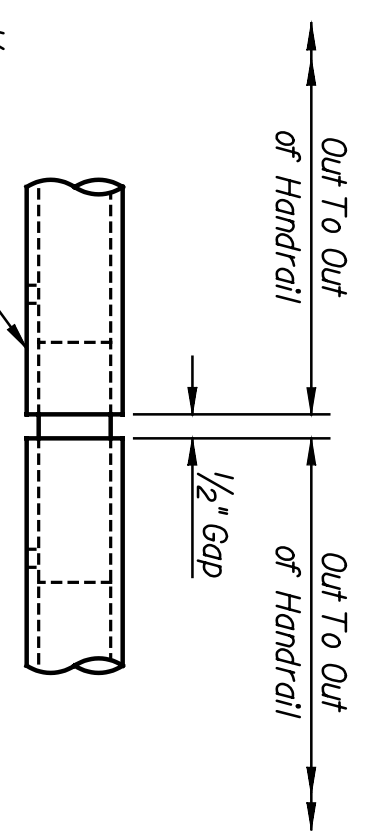


SECTION HA
 Scale: 3" = 1'-0"

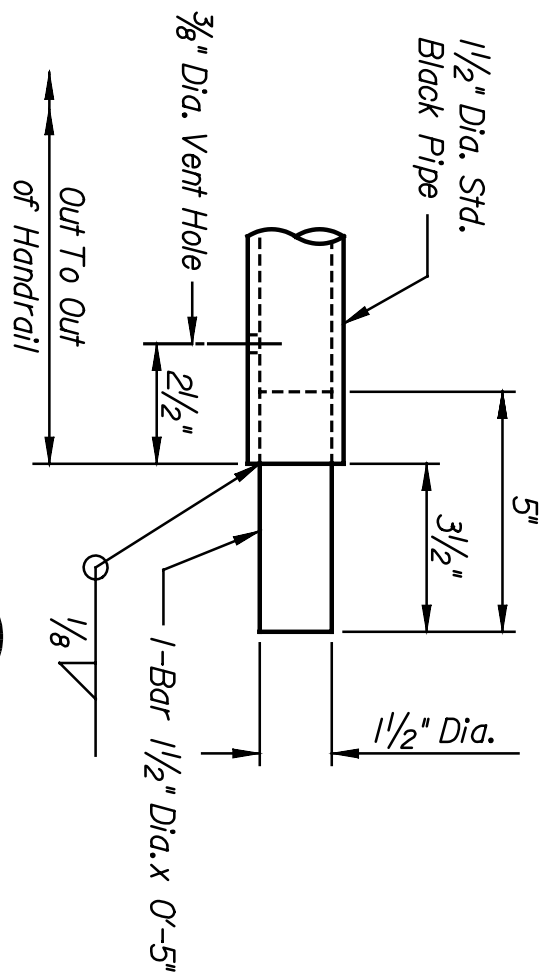
This sheet designed by:



ARCHITECTS ENGINEERS PLANNERS



SECTION HB
 Scale: 3" = 1'-0"



SECTION HC
 Scale: 3" = 1'-0"

STATE	PROJECT NO.	YEAR	SHEET NO.	TOTAL SHEETS
KANSAS	472-84071	2005	BL4.21	

NOTES:
 Welding shall conform to the AREMA Manual for Railway Engineering and the Bridge Welding Code, AWS D1.5M/D1.5. All weld metal shall be equivalent to the base metal in strength, corrosion resistance and painted appearance.
 All pipe welds shall be made with the MIG process.
 All steel pipes shall be uncoated and conform to ASTM A53.
 All structural steel shall conform to ASTM A36 or A709, Gr. 50.
 Handrails, hardware and appurtenances shall be galvanized in accordance with ASTM A123 or A153 after fabrication.
 After galvanizing, all elements shall be free of fins, abrasions, rough or sharp edges and other surface defects.

REVISIONS		BY	APP'D.
NO.	DATE		
1			
2			
3			

CITY OF WICHITA
WICHITA CENTRAL CORRIDOR
 ALTERNATE 5
 CENTRAL
 BRIDGE HANDRAIL (TYPE 2)

LOCATION: RWSF BR 2118	LINE SEGMENT: 7400
DESIGNED: []	SCALE: AS NOTED
DRAWN: []	QUANTITIES: []
CHECKED: []	DATE: []
APPROVED: []	DATE: []