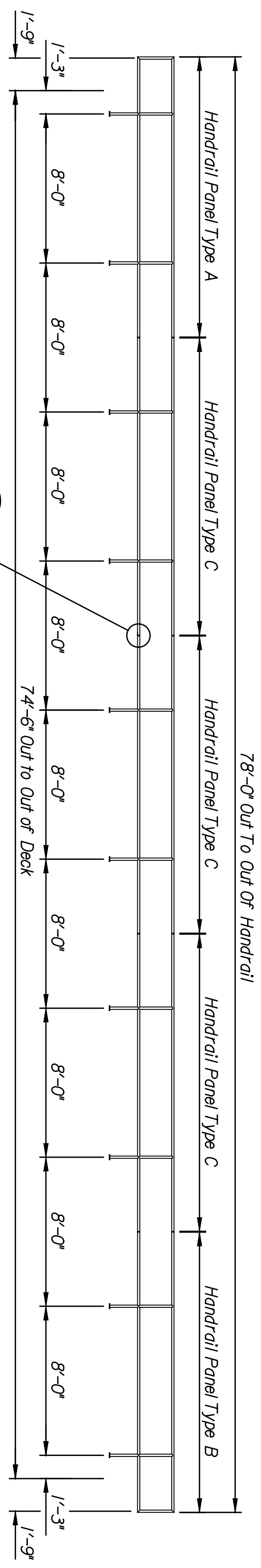
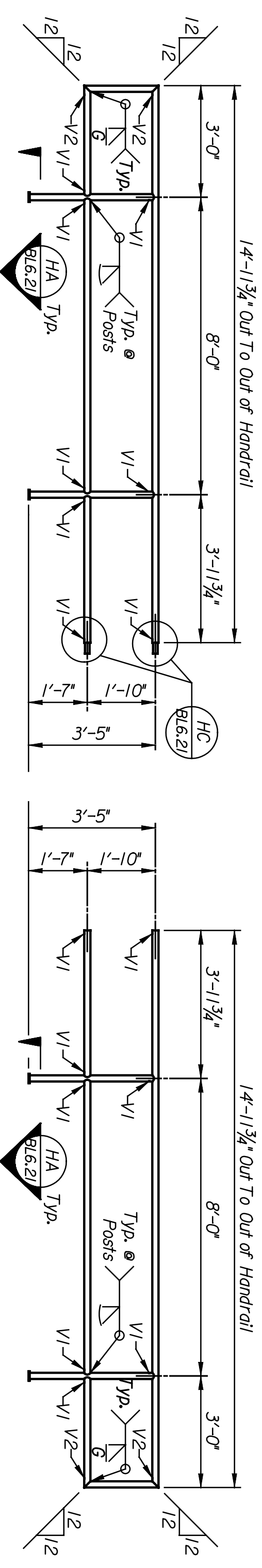


DATE	BY

Plotted on: 04-JAN-2005 11:23 *time\$
 scindrell Plot Queue: #queue\$
 Plot Scale: #scale\$ Pen Table: #pentables\$
 Design Filename: k:\b29049\BridgesDec2004\Baliard Lighting Alternate\01st Street\drawings\f20.dgn.



HANDRAIL ELEVATION (TYPE 2)

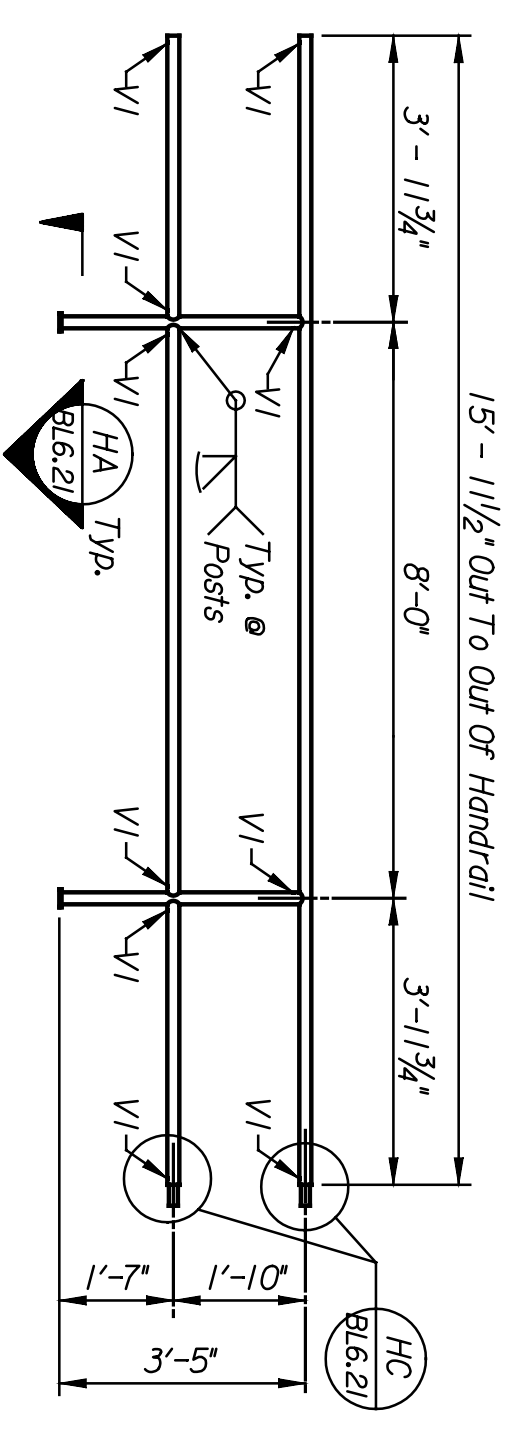


HANDRAIL PANEL TYPE A

No. Required = 1
 Weight = 105 Lbs. Each
 Handrail Panels are to be fabricated using
 1/2" Dia. std. Black Pipe.
 (Galvanize after fabrication)
 Scale: 3/8" = 1'-0"

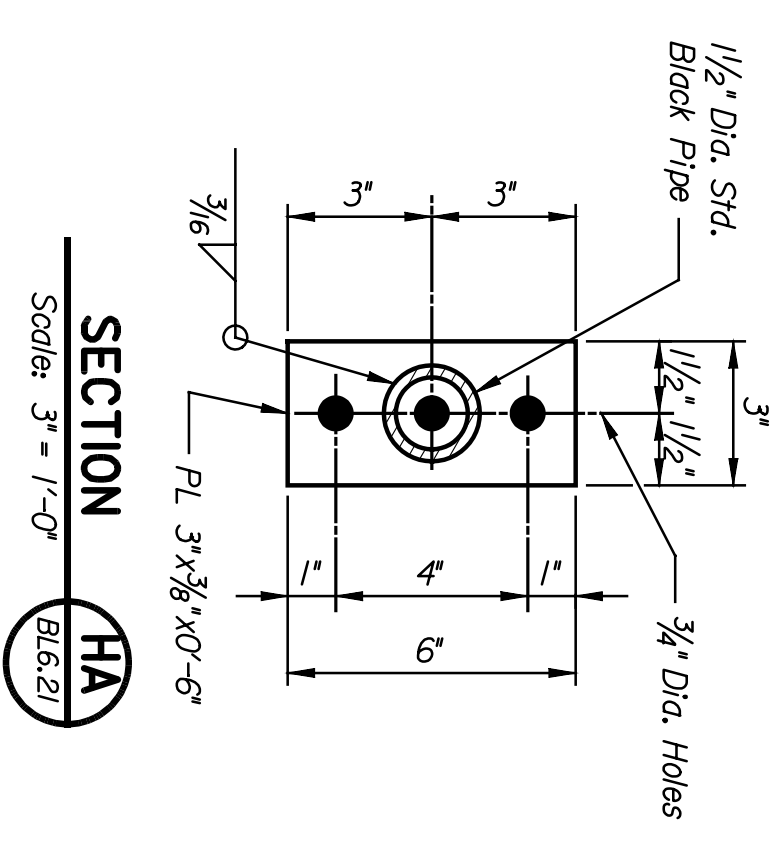
HANDRAIL PANEL TYPE B

No. Required = 1
 Weight = 105 Lbs. Each
 Handrail Panels are to be fabricated using
 1/2" Dia. std. Black Pipe.
 (Galvanize after fabrication)
 Scale: 3/8" = 1'-0"



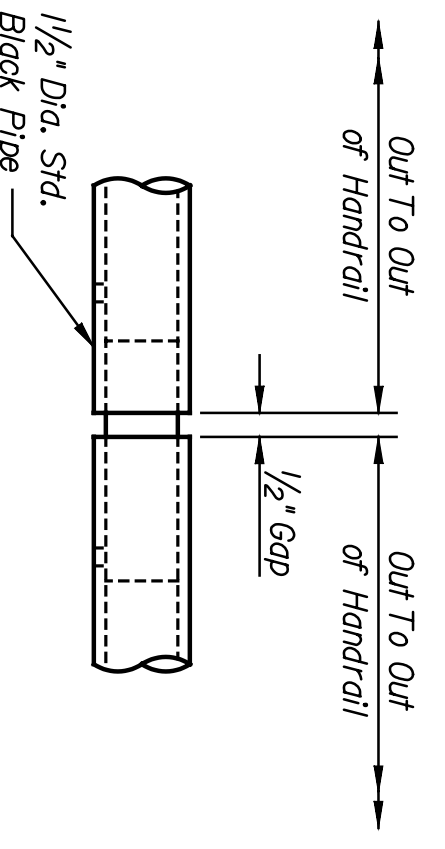
HANDRAIL PANEL TYPE C

No. Required = 3
 Weight = 106 Lbs. Each
 Handrail Panels are to be fabricated using
 1/2" Dia. std. Black Pipe.
 (Galvanize after fabrication)
 Scale: 3/8" = 1'-0"



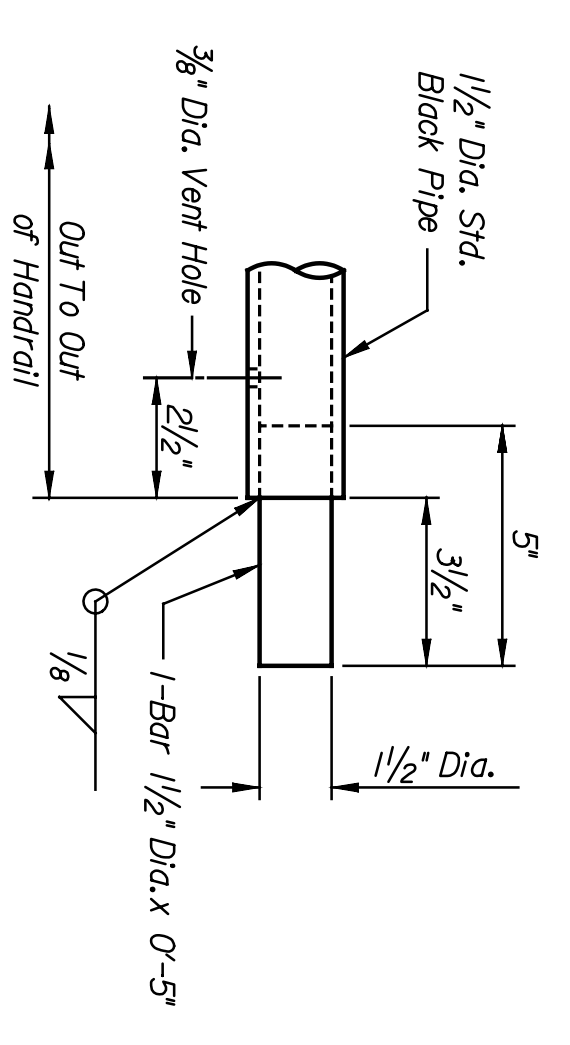
SECTION

Scale: 3" = 1'-0"



DETAIL A

Scale: 3" = 1'-0"



DETAIL B

Scale: 3" = 1'-0"

STATE	PROJECT NO.	YEAR	SHEET NO.	TOTAL SHEETS
KANSAS	472-84071	2005	BL6.21	

NOTES:

Welding shall conform to the AISC Manual for Railway Engineering and the Bridge Welding Code AWS D1.5M/D1.5. All steel metal shall be equivalent to the base metal in strength, corrosion resistance and painted appearance. All pipe welds shall be made with the MIG process. All steel pipes shall be uncoated and conform to ASTM A53. All structural steel shall conform to ASTM A36 or A709, Gr 50. Handrails, hardware and appurtenances shall be galvanized in accordance with ASTM A123 or A153 after fabrication. After galvanizing, all elements shall be free of fins, abrasions, rough or sharp edges and other surface defects.

HNTEB
 ARCHITECTS ENGINEERS PLANNERS

This sheet designed by:

LOCATION: RWSF BR. 20.2
 WICHITA, KS
 LINE SEGMENT 7400

SHEET NO.	OF	SCALE	AS NOTED	APP'D.
DESIGNED	BY	SCALE	AS NOTED	APP'D.
DESIGN	BY	SCALE	AS NOTED	APP'D.
DATE	BY	SCALE	AS NOTED	APP'D.

CITY OF WICHITA
WICHITA CENTRAL CORRIDOR
 ALTERNATE 5
 1ST STREET
 BRIDGE HANDRAIL (TYPE 2)