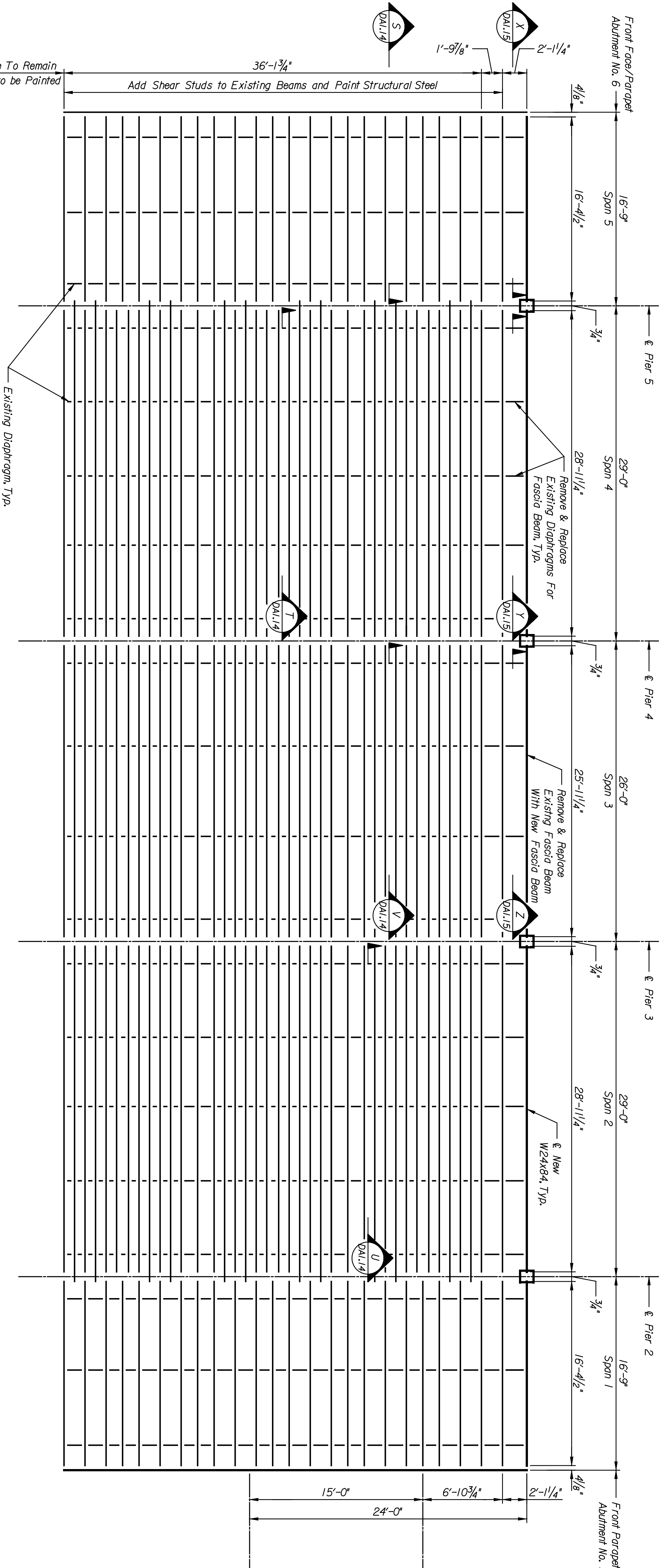


| | | |
|--|----|------|
| | BY | DATE |
| | | |
| | | |



FRAMING PLAN
 Scale: 3/16"=1'-0"

| | | | | |
|--------|-------------|------|-----------|--------------|
| STATE | PROJECT NO. | YEAR | SHEET NO. | TOTAL SHEETS |
| KANSAS | 472-84071 | 2005 | DL13 | |

Baseline (Main No. 2) & Original Track

NOTES:
 Field verify all dimensions and existing sizes prior to fabrication. Fabrication and workmanship shall conform to the current AREMA Manual for Railway Engineering.

All structural steel for the fascia beam and diaphragms shall conform to ASTM A709, Grade SOT 2, unless noted otherwise.

Each fastener shall be composed of a Heavy Hex Structural Bolt, ASTM A325 Type 1; each with one circular Hardened Washer, ASTM F436 Type 1; and one Heavy Hex Nut, ASTM A563 Grade C, unless noted otherwise.

All fasteners shall be 7/8" diameter, unless noted otherwise.

All fastener holes will be 1/16" larger than the nominal fastener diameter, unless noted otherwise.

All holes through main structural members shall be drilled full-size or shall be sub-drilled 1/4" less than full diameter and reamed to full-size.

All washers shall be located under the turned element.

Existing steel shall be tested to verify weldability. Refer to specifications. Steel weldability testing is subsidiary to headed shear connectors.

All headed shear connectors shall conform to ASTM A108, Grade 1010, 1015, 1016, 1018 or 1020.

Welding shall conform to the AREMA Manual for Railway Engineering and the Bridge Welding Code, AWS D1.5M/D1.5.

The existing steel surface preparation shall be pressurized water spray, SSPC-1, SSPC-2 and SSPC-3 in accordance with the specifications.

Rust Penetrating sealer, primer and top coat are in accordance with the specifications.

The top coat of paint shall be semi-gloss white and color matched to the proposed abutment color.

Prior to painting, submit samples to the Engineer for approval of the color.

| | | | | | | | | | |
|-----|--|------|--|-----------|--|----|--|--------|--|
| NO. | | DATE | | REVISIONS | | BY | | APP'D. | |
| 3 | | | | | | | | | |
| 2 | | | | | | | | | |
| 1 | | | | | | | | | |

CITY OF WICHITA
WICHITA CENTRAL CORRIDOR
 ALTERNATE 8
 DOUGLAS AVENUE
 FRAMING PLAN

| | | | | |
|-----------|-----|----------|----------|------------|
| SHEET NO. | OF | SCALE | AS NOTED | APP'D. |
| DESIGNED | KFO | DETAILED | DJJ | QUANTITIES |
| DESIGN | CK | CMIS | DJJ | CHK. |
| DATE | | | | |

LOCATION: RNSF BR. 201A
 WICHITA, KS
 LINK SEGMENT 7400

This sheet designed by:
HNTEB
 ARCHITECTS ENGINEERS PLANNERS