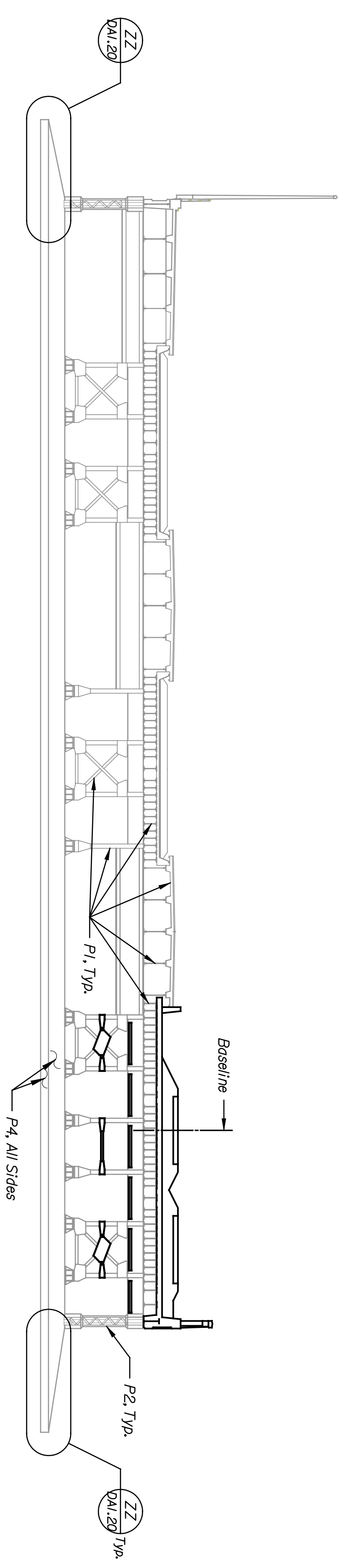
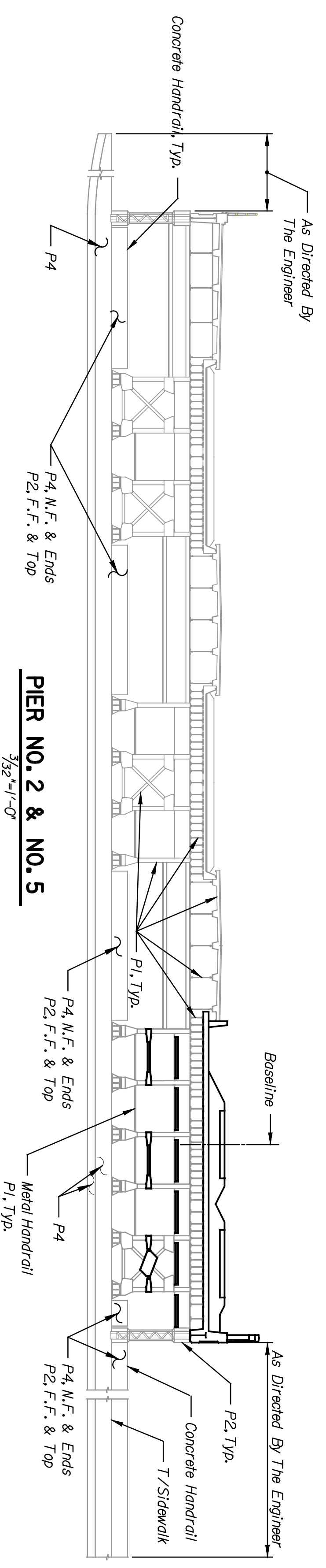


BY	DATE

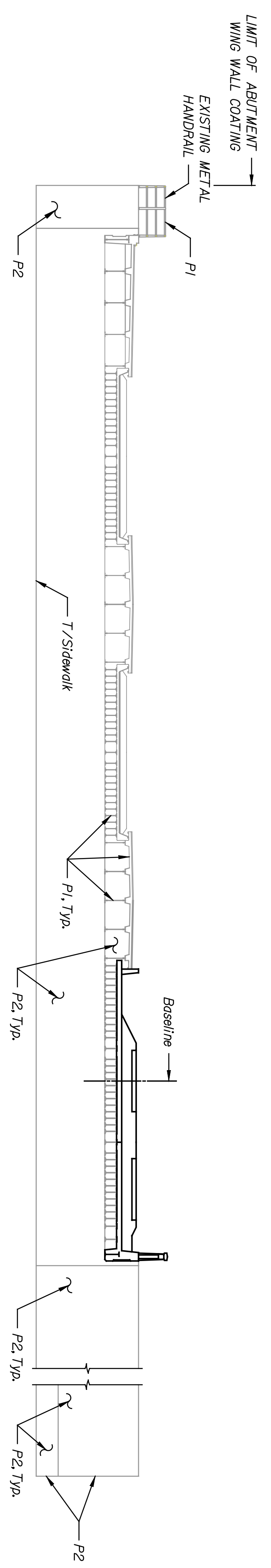
Plotted on: 04-JAN-2005 12:28 *time\$
 djamison Plot Queue: #queue\$
 Plot Scale: #scale\$ Pen Table: #pentables\$
 Design Filename: K:\B29049\BridgesDec2004\Douglas Alternate\Drawings\d16.dgn



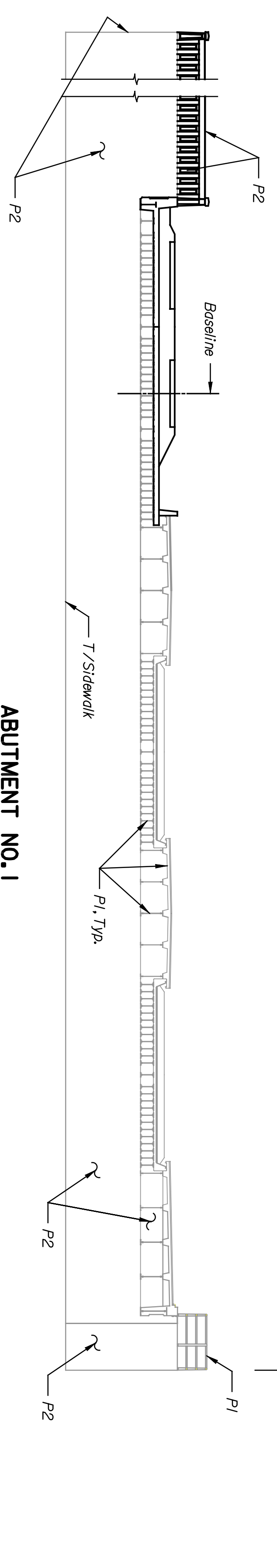
PIER NO. 3 & NO. 4
 $\frac{3}{32}''=1'-0''$



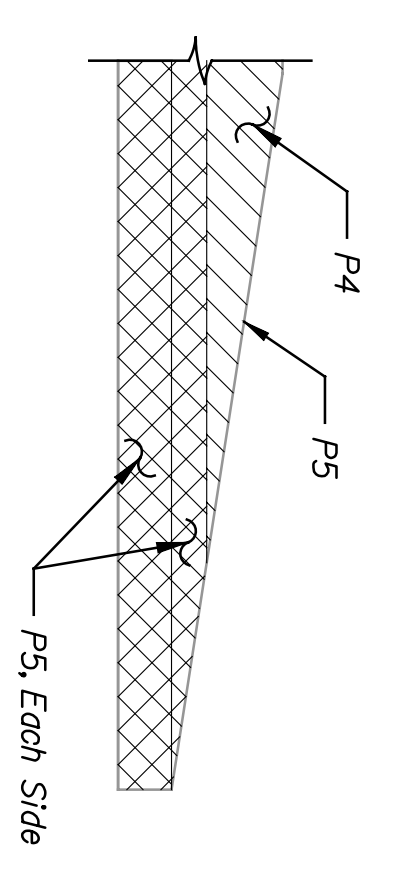
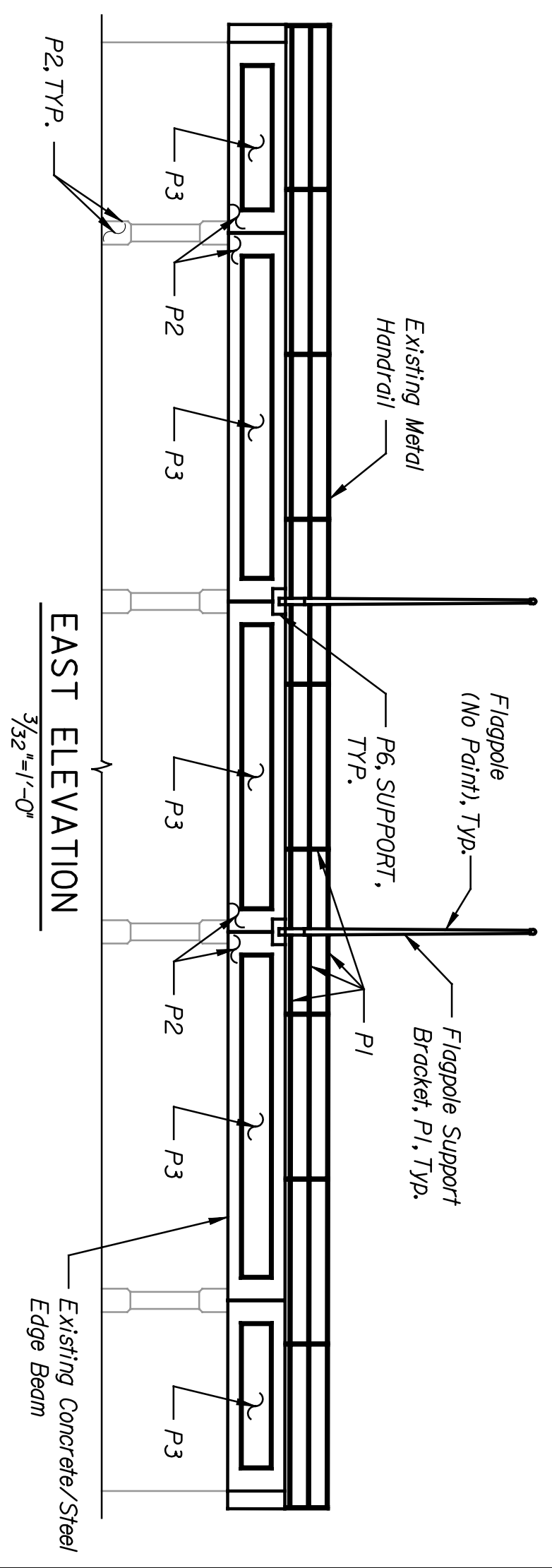
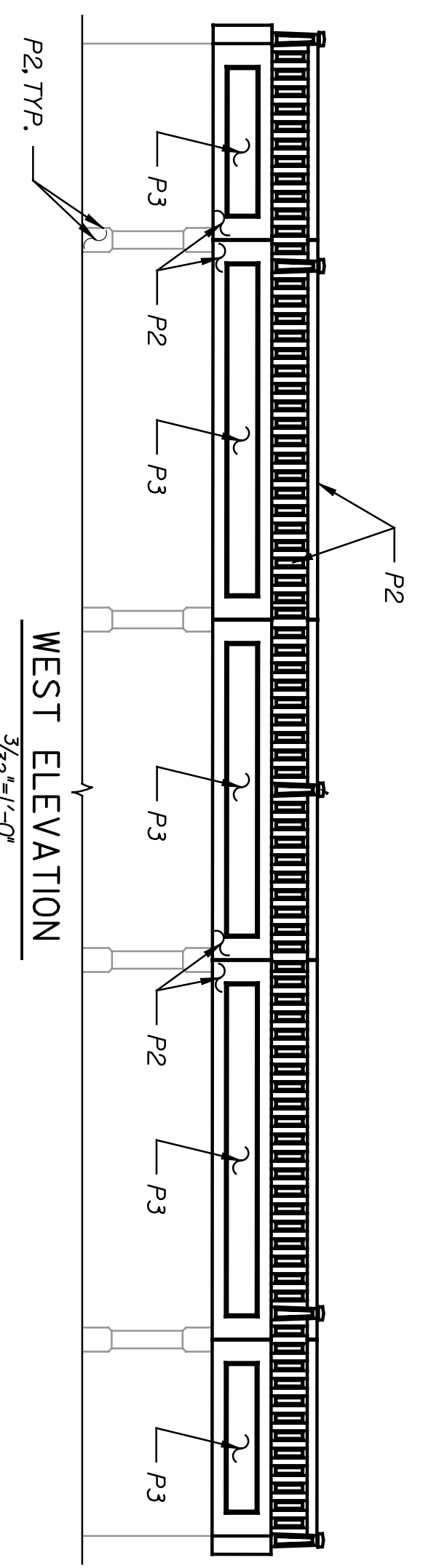
PIER NO. 2 & NO. 5
 $\frac{3}{32}''=1'-0''$



ABUTMENT NO. 6
 $\frac{3}{32}''=1'-0''$



ABUTMENT NO. 1
 $\frac{3}{32}''=1'-0''$



COLOR SCHEDULE		
COLOR MARK	COLOR	COATING
P1	WHITE	ALL METAL SURFACES
P2	WHITE	ABUT. WINGWALL/EDGE BEAM
P3	RED	EDGE BEAM RECESSES
P4	WHITE	MEDIANS/CURBS
P5	SAFETY YELLOW	MEDIAN NOSE

REVISIONS		
NO.	DATE	BY

CITY OF WICHITA	
WICHITA CENTRAL CORRIDOR	
ALTERNATE 8	
DOUGLAS AVENUE	
COLOR SCHEDULE	
SHEET NO. 06	SCALE AS NOTED APPD.
DESIGNED: DMH	DETAILED: DMH
DESIGN GR.: JMH	DESIGN GR.: DMH
DATE: 01/04/05	DATE: 01/04/05
BY: JMH	TRACED GR.: DMH
APP'D:	DATE: 01/04/05

NOTE:
 Color is subsidiary to various coating & repairs.
 Color marks P1 & P2
 Submit samples to the engineer for approval.
 WICHITA, KS

This sheet designed by:
ENTEB
 ARCHITECTS ENGINEERS PLANNERS

STATE	PROJECT NO.	YEAR	SHEET NO.	TOTAL SHEETS
KANSAS	472-84071	2005	DAI.20	