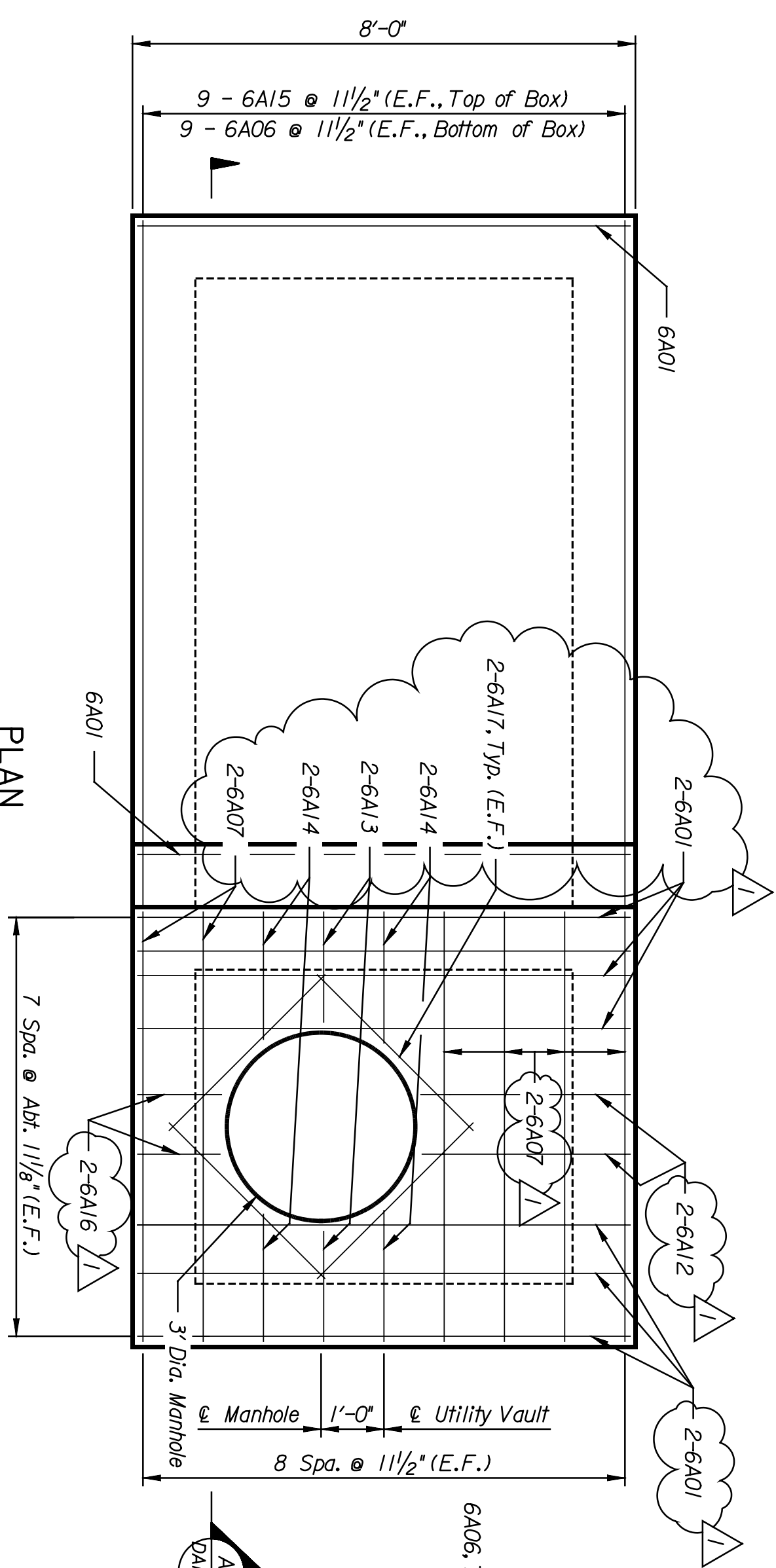
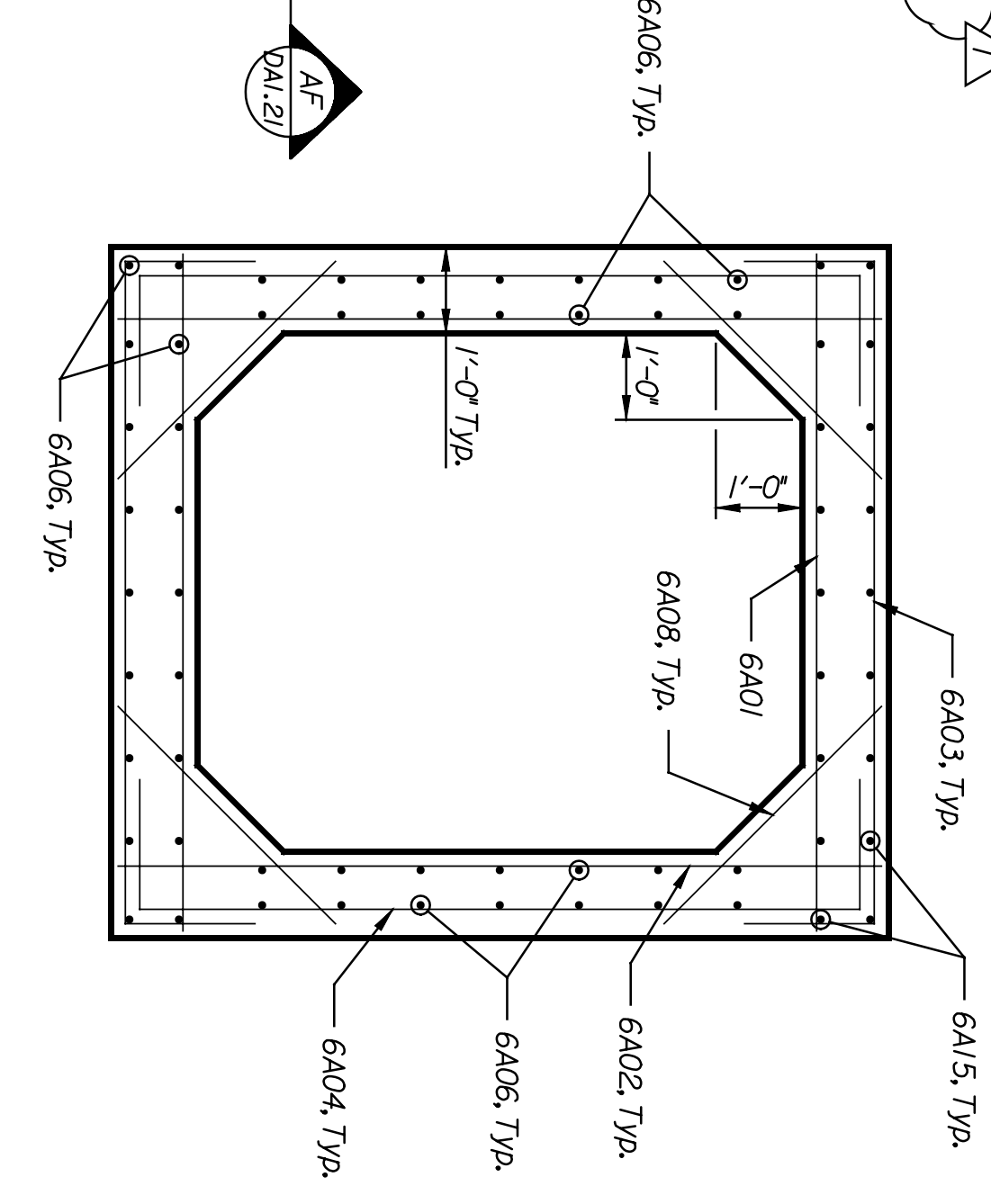


BY	DATE

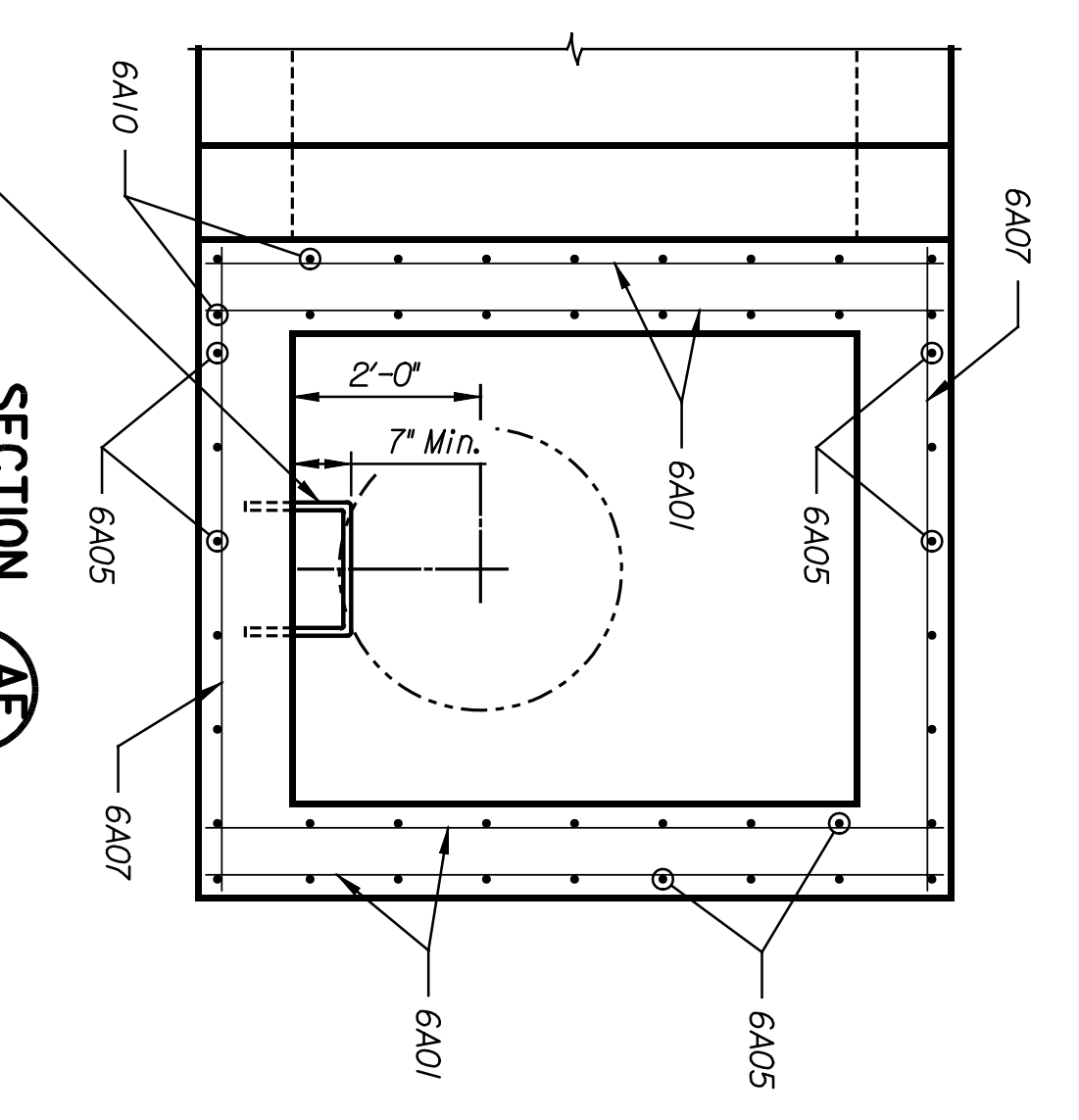


**PLAN**  
 Scale: 1/2"=1'-0"  
 (DAI.21)

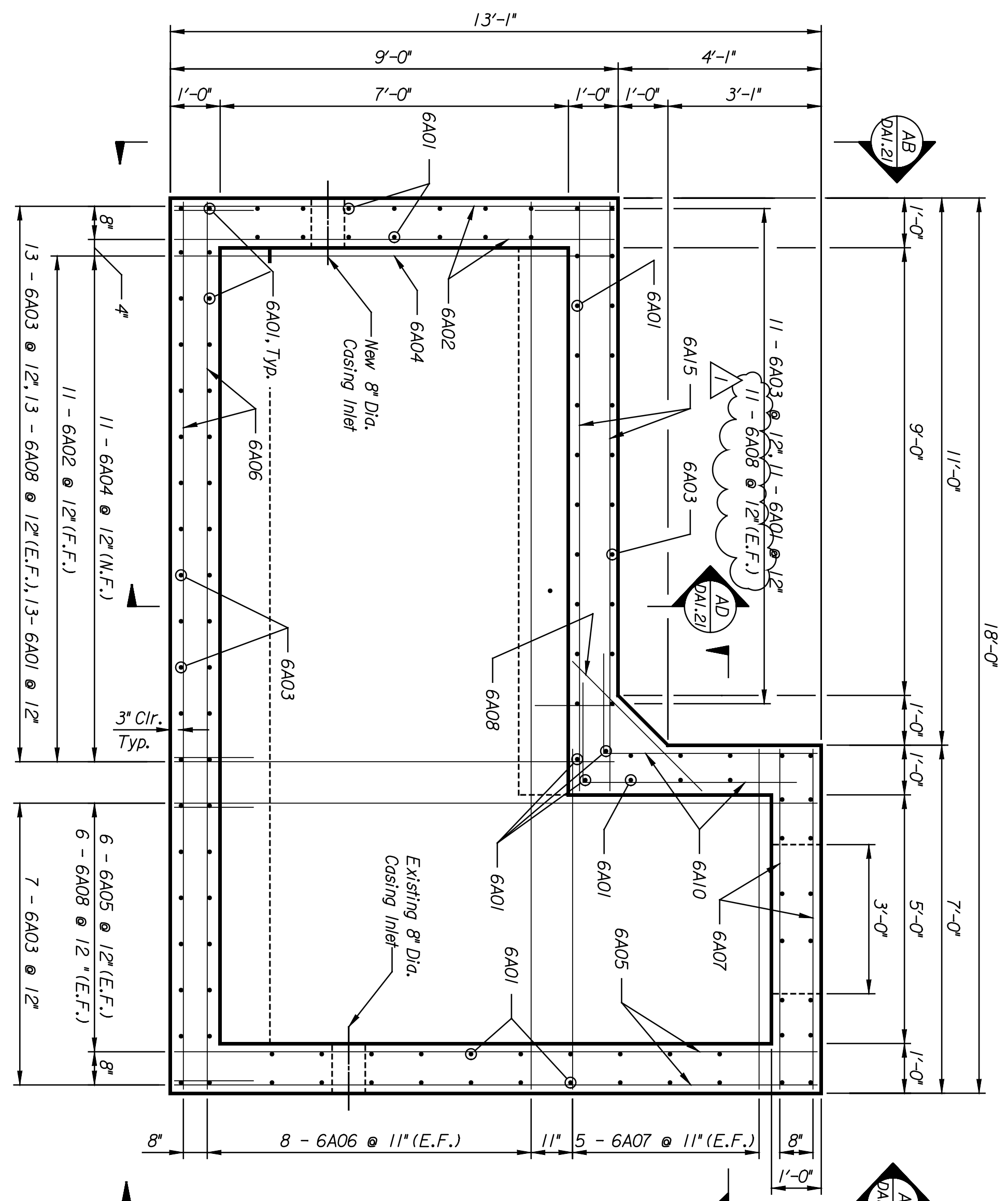


**SECTION AD**  
 Scale: 1/2"=1'-0"  
 (DAI.21)

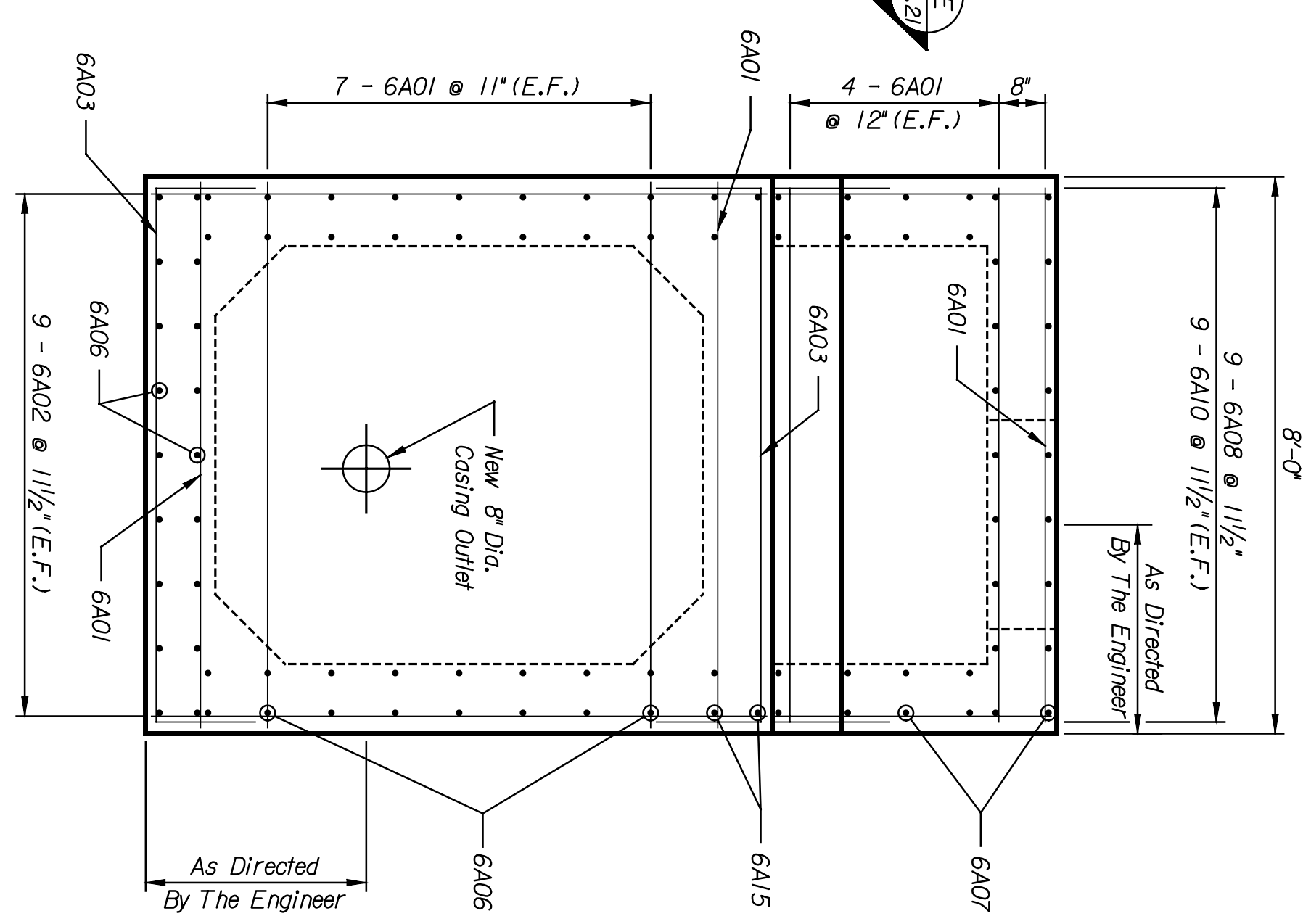
Prefabricated Manhole Ladder  
 Rungs @ 12" Max. Spacing



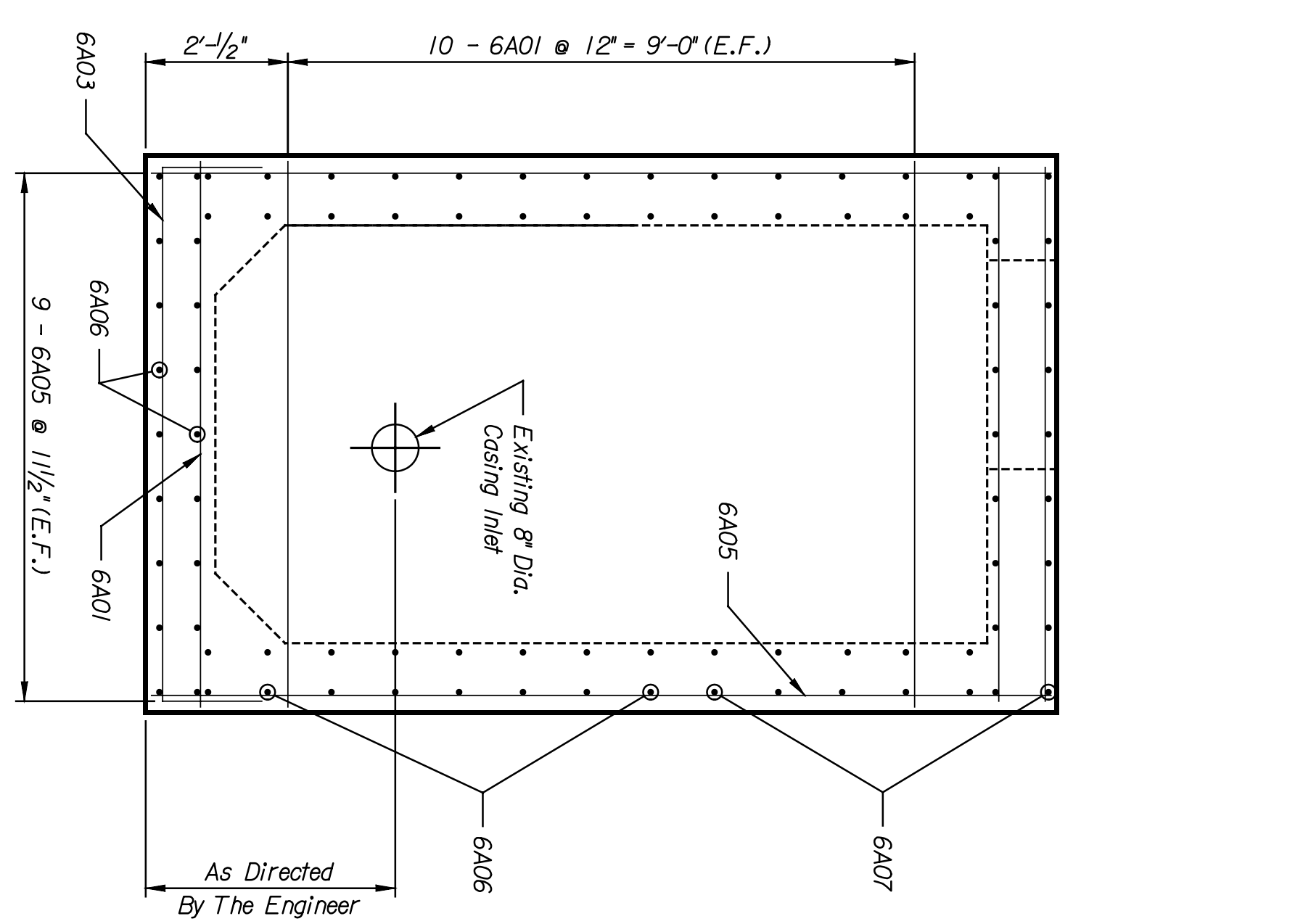
**SECTION AE**  
 Scale: 1/2"=1'-0"  
 (DAI.21)



**SECTION AF**  
 Scale: 1/2"=1'-0"  
 (DAI.21)



**VIEW AB**  
 Scale: 1/2"=1'-0"  
 (DAI.21)



**VIEW AC**  
 Scale: 1/2"=1'-0"  
 (DAI.21)

This sheet designed by:



ARCHITECTS ENGINEERS PLANNERS

STATE	PROJECT NO.	YEAR	SHEET NO.	TOTAL SHEETS
KANSAS	472-84071	2005	DAI.21	

**NOTES:**

- Field verify all dimensions, sizes and locations.
- Construct Utility Vault around existing fiber optic cable. Locate utility vault as directed by the Engineer. Locate casing inlet and outlet as directed by the Engineer.
- Seal casing inlet.
- Concrete shall be Grade 4.0, with an  $f_c=4000$  psi and shall be provided in accordance with the specifications.
- All reinforcing steel shall conform to ASTM A615 or A706, Grade 60.
- Epoxy-coated reinforcing steel shall conform to ASTM 775.
- Exposed concrete edges shall be chamfered 3/4", unless noted otherwise.

SHEET NO.	DATE	SCALE	AS NOTED	APP'D.	DESIGNED	WFB	SCALE	AS NOTED	APP'D.
1	9/04	REINFORCING CHANGE		JWH	DESIGNED	WFB	SCALE	AS NOTED	APP'D.
2					DESIGNED	WFB	SCALE	AS NOTED	APP'D.
3					DESIGNED	WFB	SCALE	AS NOTED	APP'D.

**CITY OF WICHITA**  
**WICHITA CENTRAL CORRIDOR**  
 ALTERNATE 8  
 DOUGLAS AVENUE  
 UTILITY VAULT DETAILS

LOCATION: RANSF BR. 201A WICHITA, KS  
 LINE SEGMENT 7400