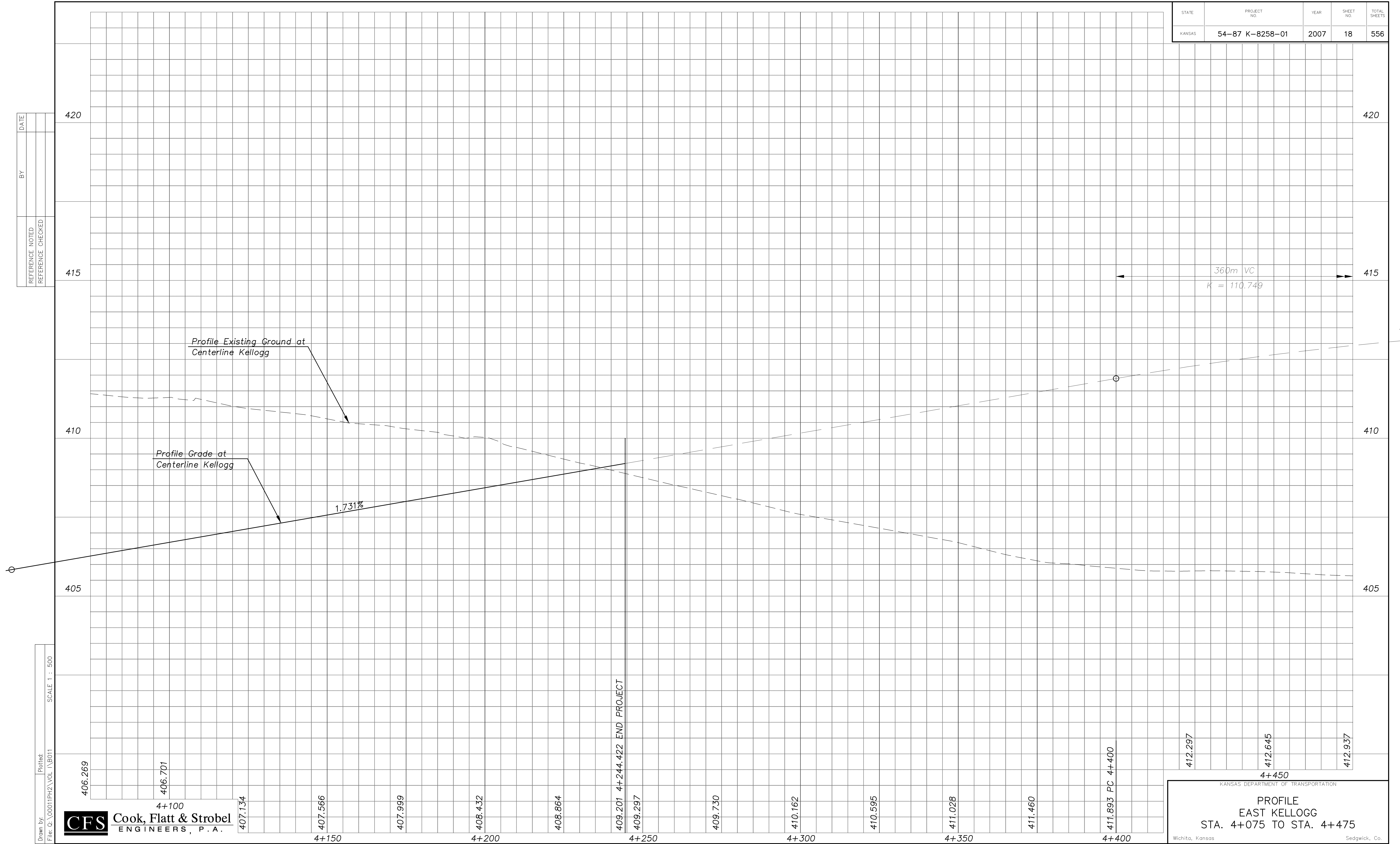


STATE	PROJECT NO.	YEAR	SHEET NO.	TOTAL SHEETS
KANSAS	54-87 K-8258-01	2007	18	556

REFERENCE NOTED	DATE



CFS Cook, Flatt & Strobel
ENGINEERS, P.A.

KANSAS DEPARTMENT OF TRANSPORTATION
PROFILE
EAST KELLOGG
STA. 4+075 TO STA. 4+475
Wichita, Kansas Sedgwick, Co.